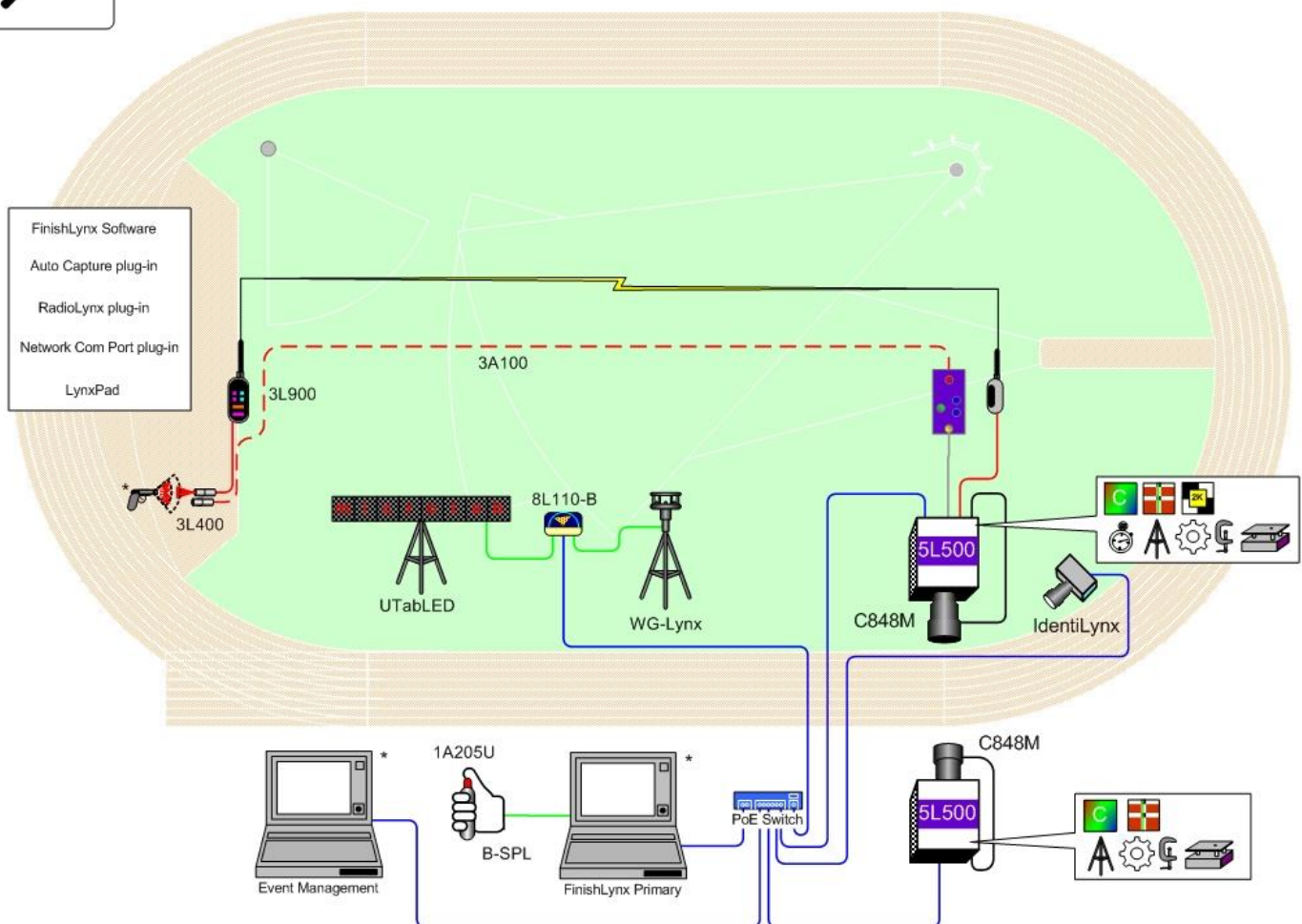


FINISHLYNX MVP PACKAGE QUICK START GUIDE

FOR ETHERLYNX VISION CAMERAS



MVP - Track



* Computers and starting pistol not included in package

© 1992 - 2017 | Lynx System Developers, Inc. | www.finishlynx.com

Updated April 2017

Quick-Start Guide - FinishLynx MVP Package Timing System

Verify that your FinishLynx MVP Package contains the components pictured here. If not, or if you need help, call: (978) 556 9780 - USA

Item	Description	ID	Item	Description	ID
	EtherLynx Vision high sensitivity Primary camera	5L500		EtherLynx Vision high sensitivity Reverse Angle camera	5L500
Not pictured	Timing option embedded in camera	5LTE		2 x C-Mount 8-48mm f1.2 Motorized Zoom Lens	C848M
	Internal RadioLynx	Int-DEC-004		Normally closed start sensor with light	3L400
	Connection box cable	451			
	2 x Remote positioner	2L102		100 ft. Ethernet cable	C10BT
	4 x 25 ft. Ethernet cables	C10BT		500 ft. start sensor cable	3A100
	3 x tripod	BG3036		IdentiLynx Full Frame Video Camera kit	IdentiLynx
	2 x Geared head	BG3275		8 port 10/100 Power over Ethernet switch	PoE-Switch
	2 x Super head clamp	BG2909		Connection box	C-Box
	Capture button and USB/Serial adapter	1A205U		RadioLynx Transmitter, includes RadioLynx start sensor (red case)	3L900
	2 x Carrying case	1A207		Button splitter	B-SPL
	Wired SerialLynx	8L108		Sonic Wind Gauge with Tripod and 50m cable	WG-Lynx
	MicroTab scoreboard, carrying case and charger	MG-TAB9		2x CS Mount 2.8-10mm P-Iris lens	CS2810P
	CS Mount to C Mount Adapter	MCS-C		Lynx USB Flash Drive with FinishLynx32, LynxPad, and Plugins	5LSW, 5LPRW 5LPACM 5LPNCP and 9LSW01
<p>Be sure to keep your USB flash drive safe. It includes your Serial Numbers, Software, & Quick-Start Guides. To access the files, insert the flash drive in your computer and click on START.html</p>					

Items not included

- Laptop running Microsoft Windows. Your computer needs: two available USB ports, and one available Ethernet port.
- Flathead screwdriver.(optional)
- Step ladder and table. (optional)
- Plumb bob and string. (optional)
- Printer (optional).
- *Recommended:* UPS – Uninterruptible Power Supply (Battery Backup)

Introduction

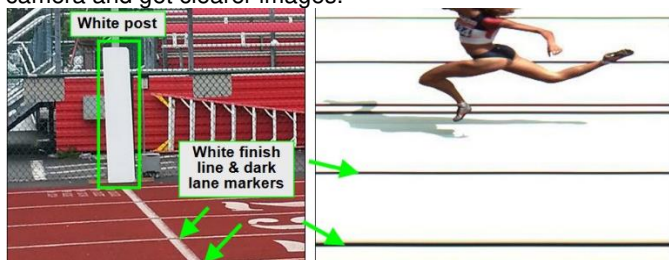
In this quick start guide, you will learn how to set up and configure the FinishLynx network as shown in the diagram above: set up the EtherLynx Vision cameras and align them with the finish line using the remote positioners and remote lens, capture, evaluate, and print a FinishLynx image and results, configure FinishLynx to work with the scoreboard and wind gauge, and import a start list of competitors that you have created in LynxPad. For more answers to common questions, visit the support section of the Lynx website.

www.finishlynx.com/support/

Step 1: Go to the track

Bring your FinishLynx system (and an assistant) to the track. Make sure there is **power** available for your computers and for the Power over Ethernet switch. The EtherLynx Vision camera and the IdentiLynx camera will receive their power via the Ethernet data cables.

Set up a table near the finish line, ideally on the infield if power is available. The finish line should have black lane markers painted or taped on the finish. If not, we suggest you use black matte tape to designate lane lines. This will help you align the camera and get clearer images.



Step 2: Install the software

A. FinishLynx

Install from the Lynx USB Flash Drive that came with your system or download the latest version of FinishLynx at: www.finishlynx.com/product/software/finishlynx-results-software/

Follow the instructions on your screen to install FinishLynx and the RadioLynx (RL), Network Com Port (NCP), and Auto-Capture Mode (ACM) Plug-ins. When prompted, enter the serial numbers on your flash drive.

- 1) Start FinishLynx by clicking the Windows **Start** button and selecting **All Programs | FinishLynx**.
- 2) Verify that you have correctly installed the RL, NCP and ACM Plug-ins by clicking **Help** from the Menu bar and selecting **About....** When the **About FinishLynx** dialog appears, the NCP, ACM and RL Plug-ins are listed with the serial numbers you entered during installation.

B. LynxPad

Install using the Lynx Resource CD or download the latest version of LynxPad at:

www.finishlynx.com/product/event-management/lynxpad/

Follow the instructions on your screen to install LynxPad. When prompted, enter the serial number found on your Lynx USB Flash Drive.

Note: You should **Right Click** on the installer and select **Run as Administrator** to install LynxPad, if you do not, you will not be able to print from LynxPad.

Step 3: Evaluate a sample image

1. Start FinishLynx. Click **File | Open....**
2. Double-click **Sprint.evn** to open the sample event.
3. Click the mouse once on the torso of a competitor on the left side of the screen. A red hairline appears. You can click and hold the red crosshair and drag it up or down to the correct lane number on the left side of your screen.

4. Press the **Enter** key on your computer. The finisher's time appears in the start list above the image.
5. Repeat these steps for all of the competitors on the screen. You have just successfully evaluated a race in FinishLynx.
6. Click **File | Close window**. If you want to reuse the image later for practice evaluation, click **No** when asked to save your changes. Close FinishLynx.

Step 4: Configure the network for Windows OS prior to Windows 7 (See Step 5: below for Windows 7,8 and higher)

1. Click the Microsoft Windows **Start** button and select **Control Panel**, or click **Start | Settings | Control Panel**.
2. Double-click **Network Connections**.
3. Right-click the **Local Area Connection** associated with the network interface card (NIC) in use and select **Properties**. The **Local Area Connection Properties** dialog appears.
4. Make sure you see a line that reads, **Internet Protocol (TCP/IP)**. You may have to scroll down to see it.
 - a. Click **Install** and select **Protocol**.
 - b. Click **Add....**
 - c. Click to select the **Microsoft TCP/IP** option and then click **OK**.
5. Check the box next to **Internet Protocol (TCP/IP)**.
6. Click to select **Internet Protocol (TCP/IP)** and then click **Properties**. The **Internet Protocol (TCP/IP) Properties** dialog appears.
7. Click the **Use the following IP Address:** button and then type the following numbers:
 - IP address: **192.168.0.5**
 - Subnet mask: **255.255.255.0**. Click **Ok** and then click **Ok** again.
8. **If you are running Windows XP, follow these steps to disable the firewall. Otherwise continue to Step 6:**
 - a. Open the Windows **Network & Sharing Center**.
 - b. Right-click the **Local Area Connection** associated with your system, and select **Properties**. The Local Area Connection dialog appears.
 - c. Click the **Advanced** tab.
 - d. Make sure the box **under Internet Connection Firewall** is **unchecked**.
 - e. Click **Ok** and then exit the Network Connections screen. **Restart your computer.**

Step 5: Configure the network for Windows 7 & 8 (if applicable)

Note: Sections 1 and 2 should be completed on both FinishLynx and Meet Management computer.

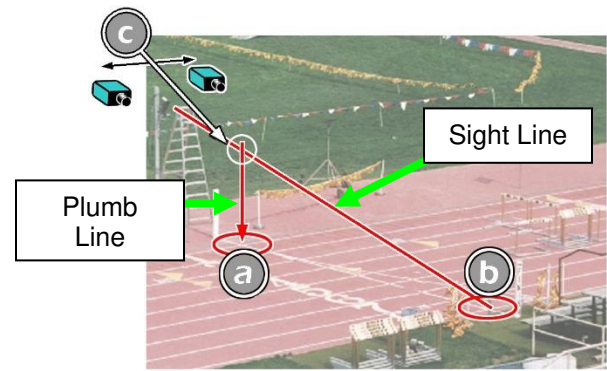
1. Go to the Windows **Control Panel**. On the top right is **View By** with a drop down arrow. Click the drop-down arrow and choose Small or Large Icons.
2. Find and double click on **Network and Sharing Center**. They are listed alphabetically by icon name.
3. This will open the **Network and Sharing Center**. On the left is a blue section titled Control Panel Home.
4. Click the **Change Adapter Settings** icon.
5. A new window will open displaying your network connections. Right-click on the **Wireless Network Connection** and select **Disable** from the list of items. This is only necessary for the FinishLynx Capture computer.
6. Right-click the **Local Area Connection** and select **Properties** from the list of items. A new window will appear with a list of connection items. Select **Internet Protocol Version 4 (TCP/IPv4)** and click the **Properties** button.
7. A Properties window will appear and is typically set to **Obtain an IP address automatically**. Select the radio button for **Use the following IP address**. In the box for IP address, enter 192.168.0.5 for FinishLynx and hit **Tab** key to auto fill in Subnet mask 255.255.255.0
8. Click OK and navigate back to the Control Panel. In the control panel click the Windows Firewall icon. Under Control Panel Home, on the left, click **Turn Windows Firewall on or off**.
9. Turn off both Home and Public Firewalls (Domain for Windows Pro).

Step 6: Set up the primary camera and tripod

Set up the tripod in line with the finish line, preferably on the infield and approximately **10 feet back**.

Note: Minimum recommended camera distance from track is eight feet (at this distance you may not be able to see the feet of the athlete in Lane 1 – being able to see the feet is not a requirement for accurate timing on the Torso of the athlete). If you need to be closer than this you may have to use the optional 6mm lens supplied with your MVP package.

1. Extend the tripod legs so the geared head is approximately seven ft high.
2. On the near side of the finish line, hold a plumb bob so that it is suspended directly above the middle of the finish line. This is the **plumb line**, shown as **a** in the image below.
3. Tie string to the screw on the top of the tripod head. Have your assistant take the other end of the string to the far side of the finish line and hold the string taught. This is the **sight line**, shown as **b** in the image below.
4. Move the tripod to the left or right until the plumb line and sight line touch at position **C** in the image below. The tripod is now in the plane of the finish line.



Step 7: Set up the Reverse Angle Camera and Tripod

1. Repeat instructions above given for Primary Camera on the opposite side of the track

Step 8: Attach the cameras to the tripods

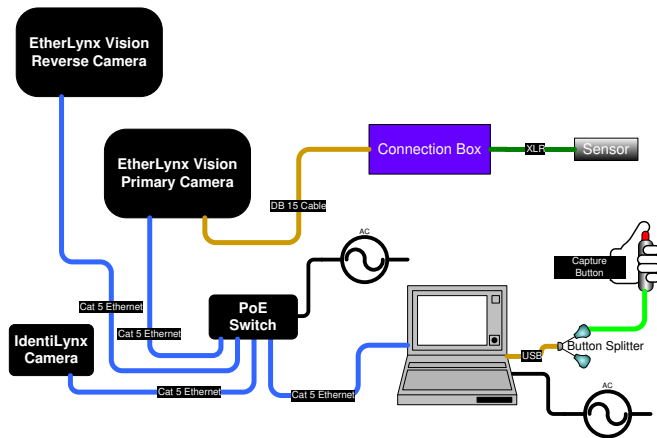
Note: Primary camera is marked **TIMING ENABLED** on camera ID plate on base of camera.

1. Secure the remote positioner to the camera bottom by turning the black handled thumbscrew. Make sure the FinishLynx label faces in the same direction as the camera lens will face.
2. Connect the cable that comes with the remote positioner to the port on the positioner and the port on the back of the camera labeled **Remote**.
3. Connect the cable on the remote lens to the remaining serial port on the remote positioner.
4. Secure the geared head to the top of the tripod.
5. Note how the mounting plate is attached to the top of the geared head. Then, pull back on the lever at the top of the geared head to release the mounting plate.
6. Tighten the mounting plate to the bottom of the remote positioner by turning the screw with a flathead screwdriver. Make sure the **Lens** marking on the bottom of the plate is facing the front of the remote positioner (where the Lynx label is affixed).
7. Attach the camera with the remote positioner and mounting plate to the tripod by clicking the mounting plate into place on the geared head.
8. With the camera lens lined up with and facing the finish line, make minor adjustments to the tripod legs so both bubbles on the tripod are centered.
9. Turn the black knob on the geared head that controls the **tilt** of the camera so that it is at about a 30 degree angle to the ground.
10. Repeat this process for the second EtherLynx Vision camera.



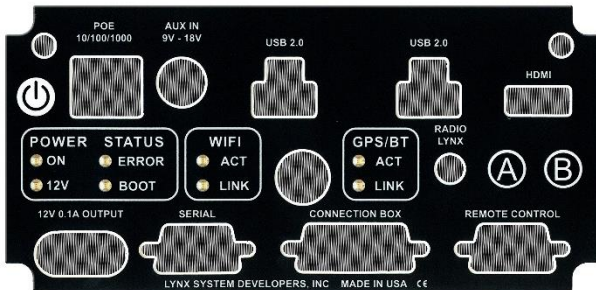
Note: Cables omitted for clarity and actual lens may vary from model shown

Step 9: Connect the Cables to your Cameras



Primary camera (Marked **TIMING ENABLED** on camera ID plate on base of camera)

1. Connect the female end of connection box cable to the port on the back of the camera (labeled Connection Box and the male end to the left side of the connection box.
2. Connect the male end of the start sensor cable to the connection box where it says **Start**. Attach the start sensor to the other end of the cable and keep the start sensor close by.



3. Connect an Ethernet cable to the network connection on your computer and the other end to a port on the Power over Ethernet switch
4. Connect an Ethernet cable between the back of the Primary camera labeled **POE 10/100/1000** and a port on the Power over Ethernet switch.
5. Turn on the camera by pressing and holding the black power button on the back.

Reverse Angle Camera

1. Repeat Steps 3 above.

Capture Button

1. Connect the capture button cable to the 9-pin serial port on the button splitter that is labeled **Capture Button**.
2. Connect the button splitter to a 9-pin serial port on your computer, or to a USB port with the supplied adaptor.


Step 10: Align the Primary Camera


Note: The EtherLynx Vision camera can be aligned using either 1-D mode or 2-D EasyAlign mode. We recommend using EasyAlign. If you are using an older model EtherLynx camera, however, it must be aligned using classic 1-D mode.

NOTE: If running a wireless Ethernet card on your computer, we recommend that you disable it before starting FinishLynx and while the camera is booting.

Start FinishLynx. Wait while the green status bar in the lower right corner of the screen completes its cycle.


Align Vision Camera in EasyAlign 2-D Video Mode

1. **Activate EasyAlign** by clicking on the 2D align icon  in the top left hand corner of the FinishLynx **Hardware Control** screen.

The icon turns green  and the 2-D video viewer appears within the software. The 2-D viewer makes it easy to see how your camera is aligned on the finish. **The goal is to align the green vertical line with the painted finish line and near its front edge.**

2. **Adjust Remote Lens/Positioner Controls** - Adjust the remote lens/position controls on the right of the FinishLynx hardware control screen.

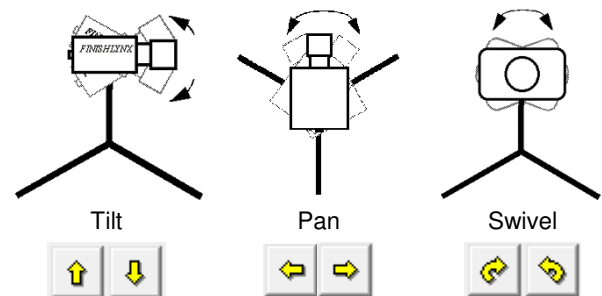
Center Remote Camera Positioner

Click  to center the camera automatically using the remote positioner.

Remote Camera Tilt, Pan & Swivel

Use the remote **Tilt**, **Pan**, and **Swivel** buttons to adjust the orientation of the camera on the finish.

You want to ensure that the green vertical line is perfectly aligned on the white finish line and that all lanes are visible in the viewer.





Have your assistant run through the finish line and watch where he/she appears on the computer monitor. The goal is for the runner's torso to be fully visible in both the inside and outside lanes. Once the camera's position is correct, you can then optimize the remote lens settings.



Remote Iris (adjusts amount of light in lens)

Open or Close the remote iris to bring the AGC value as close to 1 as you can by clicking and holding the remote Iris buttons.

Remote Focus (adjusts near/far image focus)

Click and hold the  and  buttons on the keypad on the right of the FinishLynx screen until the image becomes crisp. Start by focusing on the far lane and adjust until all lanes are in focus. Ensure that athletes in all lanes (near and far) are in focus.

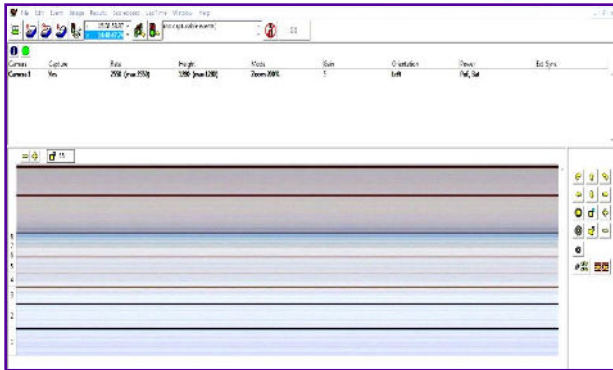
Note: If you are having a hard time getting crisp focus, try opening your lens iris and allowing the AGC to drop closer to zero.

3. Once the camera appears to be aligned, **Click**, the green alignment  icon to close 2D alignment and then click on the red 1-D alignment icon .

You will know when your camera is aligned on the finish line because the 1-D image will be primarily white. See

image below for proper 1-D alignment.

If you followed the steps closely in 2-D align, the camera should already be aligned in 1-D mode as well. The 1-D image should look similar to the following screen capture:



Step 11: Align the Reverse Angle Camera

1. Repeat 1 above for the non-timing Reverse Angle Camera.

Step 12: Mount & Install IdentiLynx camera

Follow the instructions on the separate IdentiLynx Quick Start Guide

Step 13: Setup RadioLynx wireless start

Follow the instructions on the separate Internal RadioLynx Quick Start Guide

Step 14: Connect Scoreboard and Wind Gauge

1. Connect the serial data cable supplied with the display to the DB9 port marked **Display** on the SerialLynx unit
2. Connect the serial data cable supplied with the Wind Gauge to the DB9 port marked **Wind Gauge** on the SerialLynx unit.
3. Connect an Ethernet cable between the Ethernet port on the SerialLynx unit and an open (unpowered) port on your Power over Ethernet Switch
4. Open the FinishLynx software.
5. Power on the MicroTabLED display.

NOTE: if connecting either device to your computer using a USB to Serial Adapter, plug it into the USB port before booting FinishLynx software.

Step 15: Scoreboard Option Settings

1. Go to **File|Options** and select the **Scoreboard** tab from the options window.
2. Click on **New** to create a scoreboard or new scoreboard listing in the status window.
3. Click on the dropdown for **Script** and select the **uTabLED.iss** from the list (alphabetical listing)
4. In the text box for **Name**, type in **uTab LED** (or anything to help you identify each board if there are multiple listings).
5. Code Set should be left as Single Byte
6. In the **Serial Port** drop-down list, click to select **Network (Connect)**
7. Enter the **Port** and **IP Address** settings that refer to **Display** on the label on your SerialLynx unit.

8. For **Running Time** click the radio button for **Auto** and the other settings for running time can be left with the default.
9. For **Results** select the following settings:
 - a. **Auto**
 - b. **Always send place**
 - c. **Paging**
 - d. **Size set to 1**
 - e. **Max should** be limited (**3-8** results)
 - f. **Time** – how long info displays
10. Click **OK** to close the Options window.
11. Close the FinishLynx program and re-start the software. If the camera was booted, it will come back when you re-start the software.
12. Go to **File|Options** and select the Scoreboard tab and verify that status now says running.
13. Click **OK** to close the Options window
14. Using the menu bar at the top of the FinishLynx software, click on **Scoreboard** and then select **Show Time of Day**. A check mark should appear next to Show Time of Day and the time should now display on the board.
15. Click on Scoreboard again from the Menu Bar and then select Show Time of Day again and it will remove the check mark and stop the output to the scoreboard.
16. Go to **File|Open** and select the Boys3000 from the Lynx directory
17. The top 3 (Max) results should page through the display and change the information displayed every 5 seconds (Time)

Step 16: Setup Wind Gauge

1. In FinishLynx, go to **File|Options**
2. Select the **Wind** tab.
3. From the **Wind Module:** drop-down list, click to select **Lynx** Then, click **Ok**.
4. In the **Serial Port** drop-down list , click to select **Network (Connect)**
5. Enter the **Port** and **IP Address** settings that are on the label on your SerialLynx unit.
6. In the **Default Mode** drop-down list , click to select **100M**
7. Click **Ok**.
8. Exit FinishLynx and then restart it to save the settings

Step 17: Automatic Capture Module (ACM) Setup and Operation

A: Using ACM to Stop Running Time

The following information will help to setup the ACM feature for stopping or pausing the running time with each race.

1. In the Hardware Control window, click on the **Camera Settings** (blue circle with white "I" in upper left).
2. In the Camera Settings, click on the **Inputs** tab and set **Photo Eye** to **Internal**.
3. Next, click on the **Capture** tab and set **Capture Method** to **Automatic**.
4. Click **OK** and close the Camera Settings.
5. Click on **File | Options** and the select the **Scoreboard** tab.
6. Confirm that the scoreboard is setup properly as show above.

B: Manually Control ACM:

1. Click on **File|New** to create a new blank event or click on the **Create New Blank Event** button in the upper left.
2. In the Event Window make sure there is an **A** for Armed and **S** for Scoreboard and it says **Armed** to the right of the race clock (when using ACM the C for capture will not show until capture is enabled).
3. Create a start for the event and confirm that the running time is showing on the uTabLED display.
4. Click the Capture icon to enable capture and then hit the **Ctrl+F** keys and it will say **Finishing** to the right of the race clock (click on Scoreboard Menu for shortcut keys).
5. Have someone run through the finish line and the camera should capture image and the running time should stop and display the time to the hundredths.

NOTE: In multi-lap races you can use **Alt+P** to pause the running time as competitors pass in front of the camera.

C: Automatic ACM Setting:


NOTE: Autobreak settings will occur automatically for every race so play with your settings to make sure it fits the way you want to handle each race, even multi-lap races.

1. Go to **File|Options** and select the Scoreboard tab.
2. Under Running Time on the third line is **Autobreak**, these settings allow it to occur automatically.
3. Selecting **Finish** and **If Capturing** will cause the running time to stop when ACM is on and the competitors cross the finish line.
4. Selecting **Pause** but NOT **If Capturing** will cause the running time to Pause each time competitors cross the finish line in multi-lap races when capture is not enabled.

Step 18: Create a competition directory for FinishLynx and LynxPad to share

1. Right-click on your computer desktop and select **New | Folder**. When the **New Folder** appears, change the name to **Practice competition**.
2. In FinishLynx, click **File | Options...** Click the **Browse** button on the **Event Directory**: and navigate to the **Practice competition** directory you just created. Then, click **OK**.
3. Still in FinishLynx, click **File | Options...** and click the **Database** tab. Click the **Browse...** button next to the **Input** and **Output Directory**: and navigate to the **Practice competition** directory. Then, click **OK**.
4. Now, start LynxPad by clicking the Windows **Start** button and then **All Programs | LynxPad**.
5. Click **File | Options...** and **uncheck** the **Load Existing Results on Program Start** box. Then, click **OK**.
6. Open the sample competition by clicking **File | Open**. Navigate to **C:\LynxPadData\Sample** and then double-click the **lynx.cmp** file. A practice competition opens on the screen.
7. Still in LynxPad, click **File | Options...** Click the **Browse** button next to the **Directory**: text field. Navigate to the **Practice competition** file you created earlier. Select it and click **Ok**. Click **Apply** and then click **Ok** again.
8. Still in LynxPad, click **File | Save as...** and navigate to the **Practice competition** folder. Then, click **Ok**. Now, FinishLynx can get start lists created in LynxPad, and LynxPad can import results generated by FinishLynx.

Step 19: Use FinishLynx with LynxPad Data

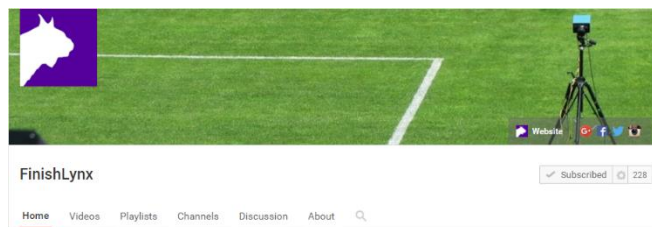
1. In FinishLynx, click  to load the schedule of events from LynxPad. The **Go To Event** dialog appears.
2. Click the **Load Schedule** button once. Click the drop-down list under the **Load Schedule** button. A list of events appears. Click to select the **"110 Meter Hurdles Men (9, 3, 1)"** event in the list, and then click **Ok**. The first heat of the third round of the men's 110m hurdles opens on the FinishLynx screen.
3. Either use a starting gun, or knock the sensor sharply against a hard object - this simulates the firing of the starting gun and starts the yellow FinishLynx timer.
4. Have your assistant run through the finish line while you



press down and hold the red capture button to capture the image. Release the button as soon as he/she has run completely through the finish line.

5. Practice evaluating the image by following the same steps you followed earlier in Step 3:
6. Click **File | Save** to save the race to the **Practice competition** directory.
7. Crop space between competitors in your FinishLynx image by right-clicking and drawing a box around the unwanted space. Release the mouse button and select **Crop** from the dialog that appears.
8. **(Optional)** Print the results and a portion of the FinishLynx image by right-clicking on the image and drawing a box around the portion you want to appear in your printout. For example, the first place finisher or a close finish between two competitors. Click **Ok** and then select the printer from the **Print** dialog to send the image with results to the printer.
9. Click **File | Close window** and then click **Yes** to save changes you made to the FinishLynx image when you cropped it.
10. In LynxPad, click to highlight **Men 110 Meter Hurdles** in the **Events** window. The start list appears in the **Heats** window.
11. Still in LynxPad, click **Competition | Refresh All Results**. The results from the race you just evaluated appear in LynxPad.

This completes the FinishLynx MVP Package Quick Start Guide. Looking for more resources? Visit our YouTube Channel for setup and support videos.



www.youtube.com/user/LynxSystemDevelopers/