

Vision PRO X

Datasheet



Redefining Precision in Photo-Finish Technology

The EtherLynx **Vision PRO X** is the premier photo-finish camera for every sport - delivering unmatched accuracy, exceptional light sensitivity, and breathtaking image resolution. Designed for professionals who demand the best, the ultimate Lynx camera sets a new standard in sports timing and results evaluation.

Key Benefits at a Glance

- Unparalleled timing accuracy for every sport
- Improved image resolution - by a factor of 6X over previous leading cameras
- Improved light sensitivity - lower noise level facilitates results evaluation
- High vertical resolution - allows higher frame rate and image resolution over wide finish lines
- Wider choice of high-quality F-Mount lenses



Advanced Features

Extended Time Accuracy: Up to 40,000 fps

Extended Resolution: Up to 5120 Pixels High

Extended Light Sensitivity: Up to LuxBoost 16

Extended Choice of F-Mount Lenses

Extended Features: Inclusive of Most Possible Options

Perfect For

High Velocity Sports & High Resolution Images

Wide Finish Lines & High Resolution Images

Events Under Artificial Lighting

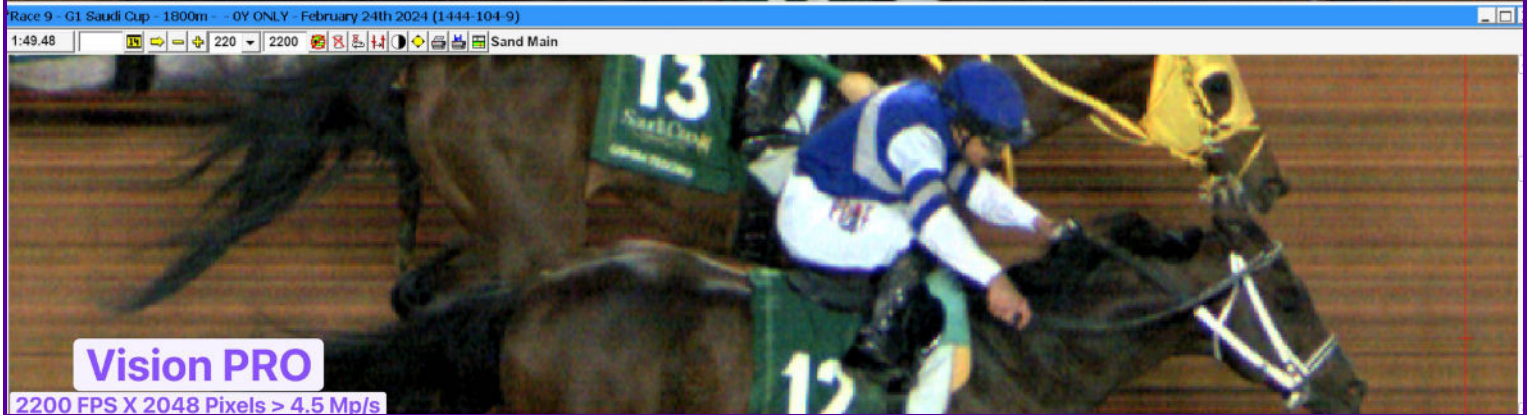
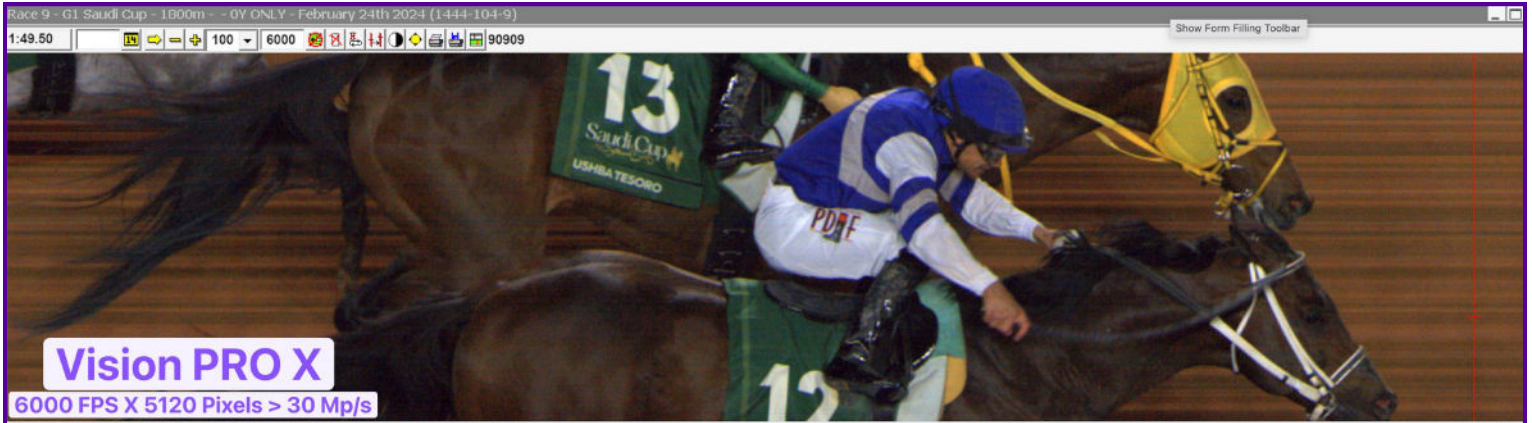
High-Quality Lens Options (F-Mount Adapter Included)

Adding GPS, Level, EVF, PLC, LuxBoost, Frame Offset, etc.



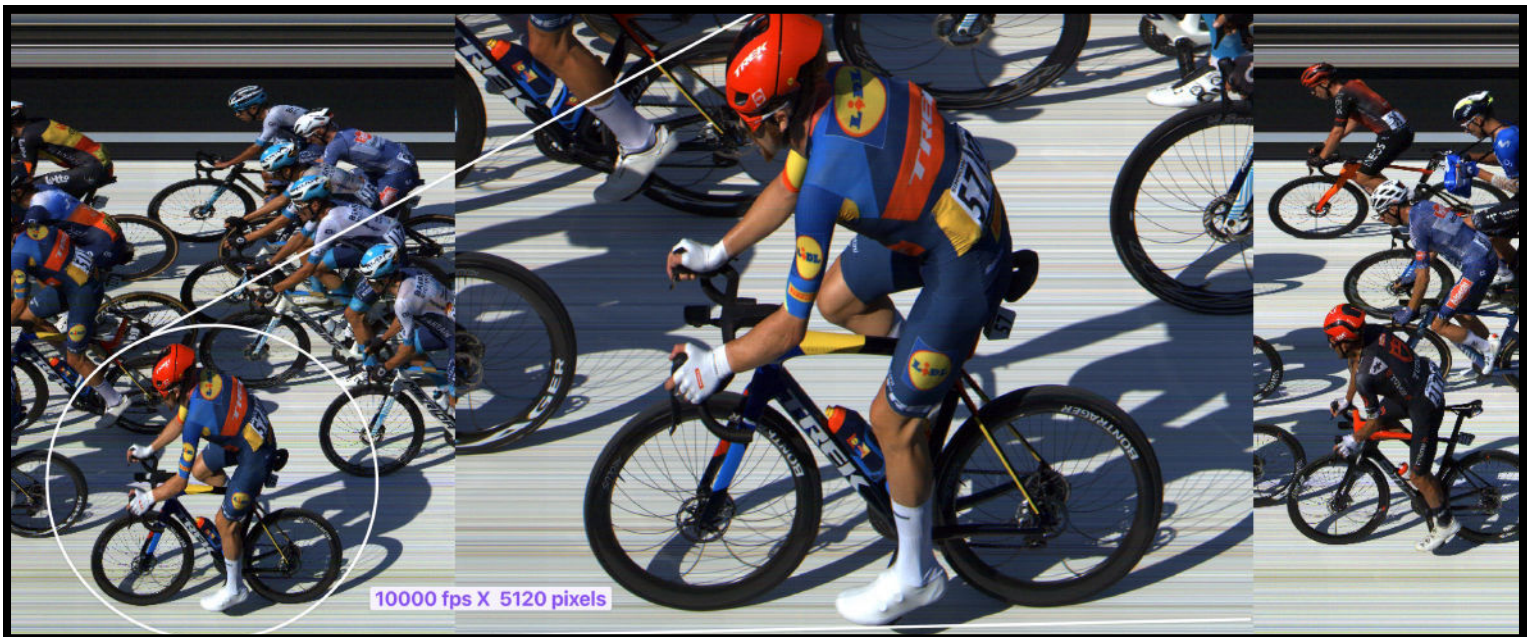
Vision PRO X

Datasheet



Unparalleled Image Resolution & Exceptional Light Sensitivity

Despite camera covering a 26 m wide finish line imposing a 1.1/1 capture ratio, the Vision PRO X is capable of 6000 fps. Despite a disadvantage of 4X illumination (6000/2200fps - f/2.8/f/1.8 lens) the Vision PRO X delivers better resolution with less noise.

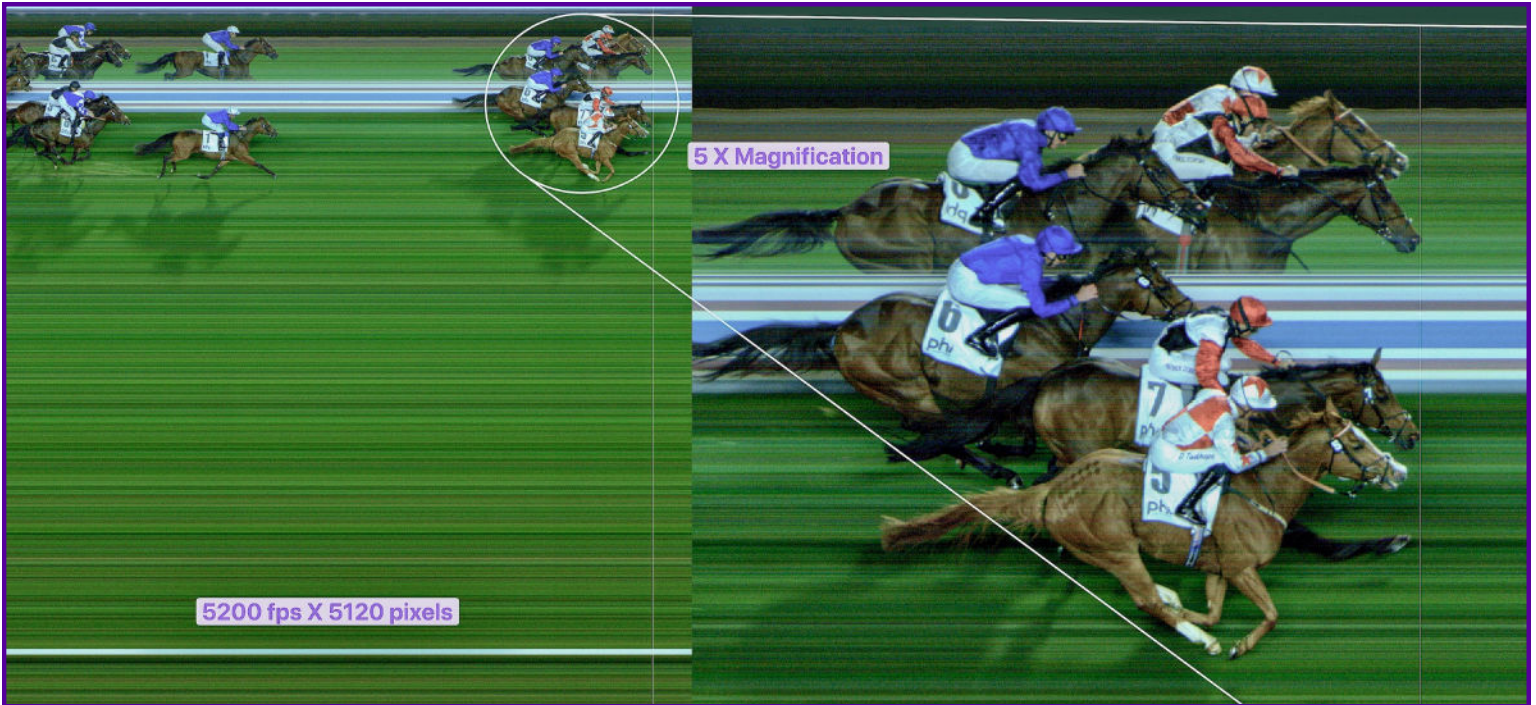


The Vision PRO X delivers exceptional clarity across all sports.

Discover how the Vision PRO X can transform your photo-finish experience

Vision PRO X

Datasheet



The Vision PRO X extended vertical resolution ensures precise adjudication, even when competitors occupy minimal sensor space, making it ideal for wide racecourses such as in rowing or horse racing.



Night Racing under Floods @ 12,000 fps

Low-light? No problem. Enhanced light sensitivity ensures superior results in any lighting condition.

Discover how the Vision PRO X can transform your photo-finish experience

Vision PRO X

Datasheet

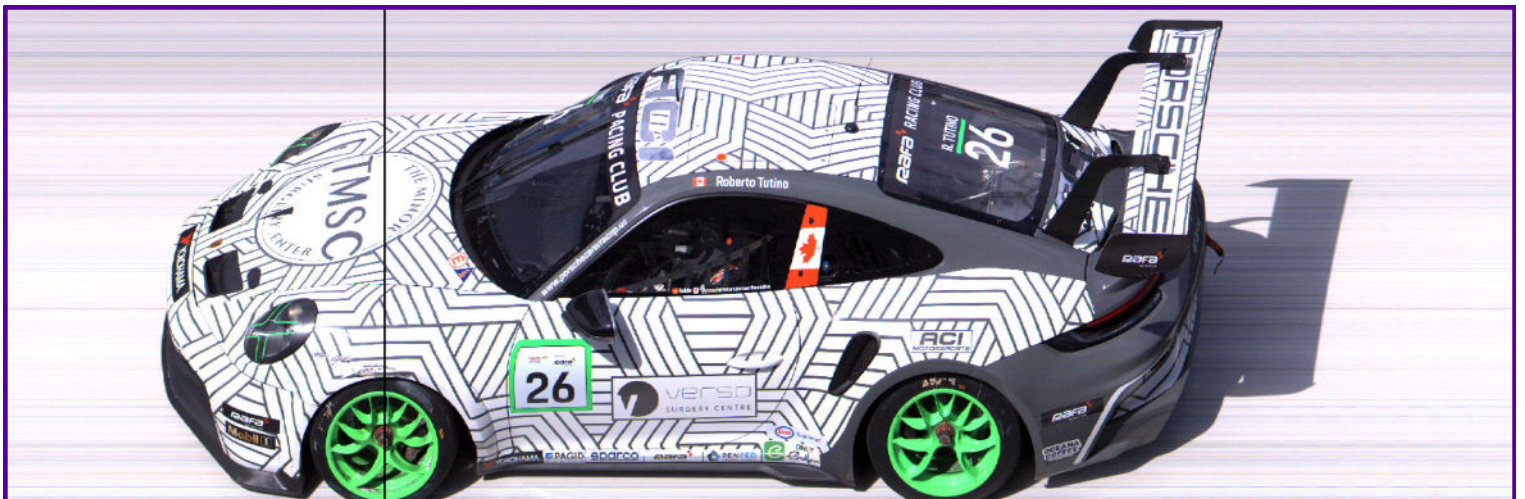
Night Racing @ 25,000 fps

Camera positioned at 75 m from track
Lens f/2.8 - Illumination less than 1000 lux



Exceptional Light Sensitivity

Low-light? No problem. Enhanced light sensitivity ensures superior results in any lighting condition.



Unparalleled Image Resolution & Time Accuracy - High Velocity Sports

At 250 km/h, 1/1000 sec. = 7cm; at 40,000 fps = 1.7 mm.

The Vision PRO X is an essential complement to a Transponder System.

Discover how the Vision PRO X can transform your photo-finish experience

Specification Data

Sensor Type	CMOS Array (single line in photo-finish mode)
Frame Rate	Continually Adjustable from 100 to 40,000 fps At any vertical resolution and LuxBoost Level
Vertical Resolution	Up to 2560 pixels @Zoom 100% - Up to 5120 pixels @Zoom 200% Continuously Adjustable - Selective Active Pixels w/Frame Offset
Low-Light Sensitivity	Up to 16 Levels of LuxBoost (4 f/stops) (user selectable)
# Colors/Pixel	Up to 2 million colours (user selectable)
Time Base	0.5 Part per Million (0.0005s per 16.7min) - Temperature Compensated
Standard Characteristics	Internal GPS Synchronization 2D Wireless Electronic Viewfinder Functionality Internal Inclinometer Real-Time Lossless Image Compression Hardware and Software Gamma Control Phased Light Compensation IR Filter
Lens Mount	Standard F-Mount with Remote Iris & Focus Control Optional C-Mount with Reduced Vertical Resolution
Automatic Luminance Control	Auto-Iris, Auto-Gain, Auto-LuxBoost
PC-Connection	1Gbps - 802.3 Ethernet Topology
Distance Camera to Computer	Typical 100m w/ Cat 6/7 - 2000m w/MM Fibre Optic
Custom Settings	Control & Display Multiple Cameras from Single Computer Mix & Match with Previous Generations of Lynx Camera Models Unlimited Number of Easy Recall Configuration Templates
Optional Add-On	Internal Battery Backup External Battery and AC Power Supply 802.11 Wireless Connectivity C-Mount with (Reduced Vertical Resolution)
Power Inputs	Standard: 802.3at POE+ Options: 100-240 VAC w/ adapter or 12v DC input
Operating Temperature	-10 to 60° C
Camera Dimensions & Weight	17cm x 7.5cm x 15.5cm / 2.1 Kg
Approvals	FCC, CE, ICES