



# MYLAPS Timing & Scoring

## FinishLynx LapTime Integration QSG

Quick Start Guide (v1.00)

### Introduction

---

The following guide will walk you through the configuration of **FinishLynx** and **MYLAPS Timing & Scoring**, to allow the integration of laptime data into **FinishLynx**. If at any point you need additional help, please contact Technical Support: [support@finishlynx.com](mailto:support@finishlynx.com).


### REQUIREMENTS

---

1. FinishLynx software (version 12.10 or newer):
  - a. LapTime plug-in ([www.finishlynx.com/product/finishlynx-plugins/lap-time/](http://www.finishlynx.com/product/finishlynx-plugins/lap-time/))
  - b. Network COM Port plug-in ([www.finishlynx.com/product/finishlynx-plugins/network-com-port/](http://www.finishlynx.com/product/finishlynx-plugins/network-com-port/))
2. MYLAPS Timing & Scoring software:
  - a. Login to the [MYLAPS Partner Portal](#). You will have received an email to reset your password.
  - b. Click on **Support**.
  - c. Scroll down and click on **Timing & Scoring**.
  - d. Click to **Download Timing #.#.#** and **Timing and Scoring** manual.
  - e. Install **MYLAPS Timing**.

### Setup 1 Configure FinishLynx Options

---

1. Start **FinishLynx**.
2. Go to **File | Options... | LapTime tab**.
3. Click New to create a new LapTime device. See Figure 1 for recommended settings.
4. Go to **File | Options... | Results tab**.
5. Scroll through the fields and  enable the following:
  - a. Cumulative Split Time
  - b. Last Split Time
  - c. Laps
6. Go to **File | Options... | Image tab**.
7. Select a color for **Show Lines: Splits**.
8. Click **Ok** to close the **Options** dialog.



9. Optional Settings

- a. Hold Ctrl+Shift and go to **File|Options...** to open the Other (Hidden) Settings.
- b. Expand +**LapTime**.
  - i. **FillInTime**: set value: 2 to have the laptimes fill the Time field on the last lap, even if an EtherLynx camera is used.
  - ii. **IdMaxSize**: for BibTags, set to 5 to remove the Group ID from tag encoding.
  - iii. **IdStripZeros**: for BibTags, set to 1 (on) to remove leading zeros from tag encoding.
  - iv. **TotalLaps**: set to total number splits (1 for single finish decoder). Can be changed in Information Zone of each event.
  - v. **IntSyncMask**: for BibTags, set to 2 (guns) if camera is not synced to GPS.

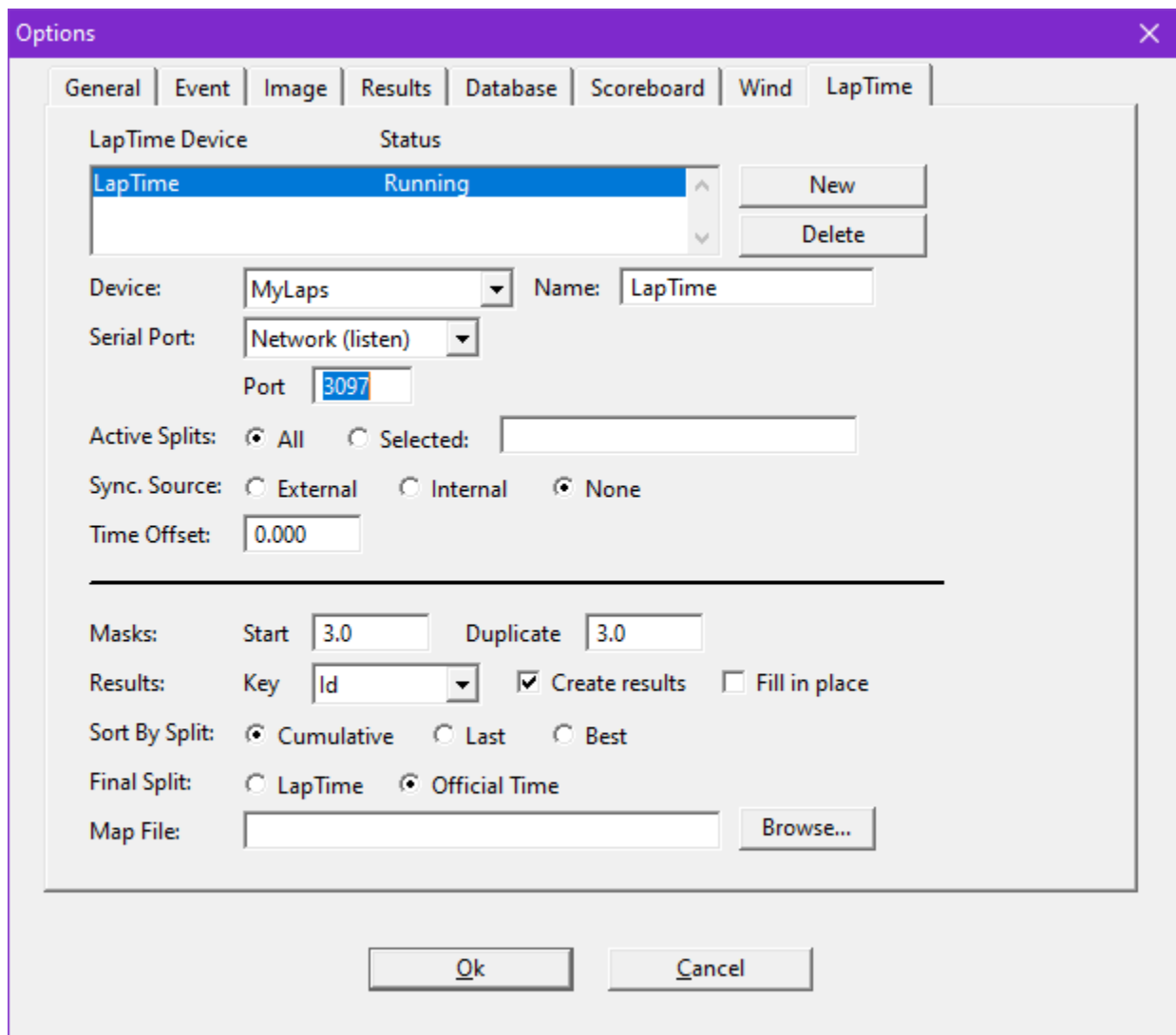



Figure 1



## Setup 2 Configure MYLAPS Timing & Scoring (Exporter)

1. Double-click the **Timing 64** shortcut.
2. Login in using your MYLAPS Portal credentials.
3. Select **Start a new event** and click **Ok**. (Optional - Enter the Event name: and Start date)
4. Go to **File|Preferences...** and find the **Usage and Sync** box. Check the box to **Create an “Allow all tags” import rule by default** and click **Ok**.
5. Click the **Add device** button, select your decoder, and click **Assign**. (Optional – Enter a location name)
  - a. Click the  icon on to the decoder line and select **Load all data (Start from the beginning)**.
  - b. Click the **Play** button on File 1.
6. Click the **Add Exporter** button and select **TCP/IP Export**.
  - a. Click the cog wheel to configure the TCP/IP Export. See Figure 2 for recommended settings.  
**NOTE** – If Timing & Scoring is running on a different PC, enter the IP-Address of the FinishLynx PC.
7. Check the **TCP/IP export** box on the location banner.
8. Click the arrow and **Connect**. See Figure 3.

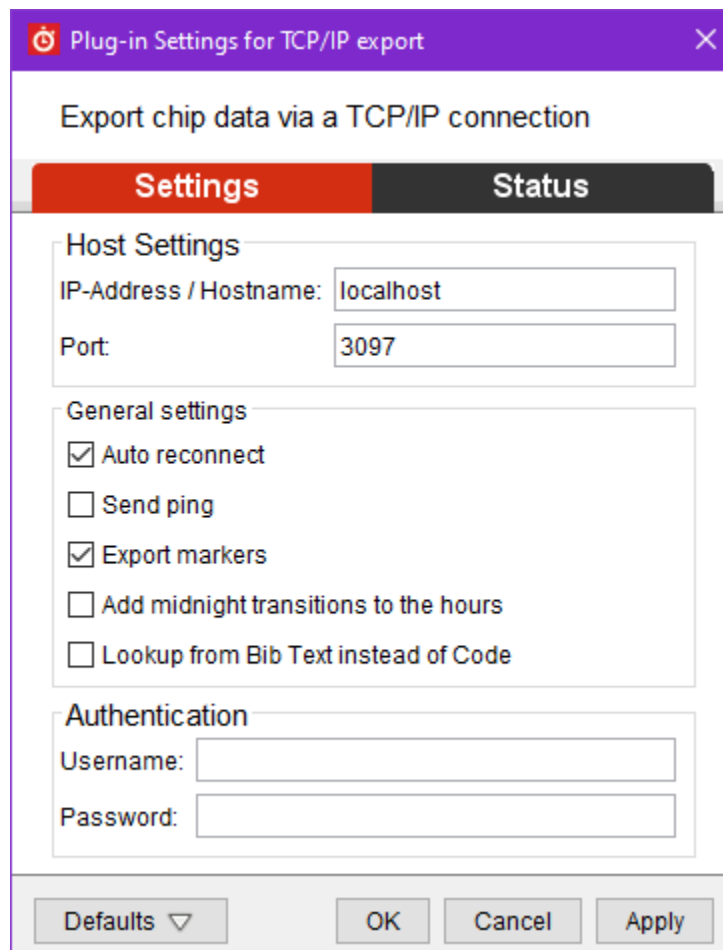


Figure 2

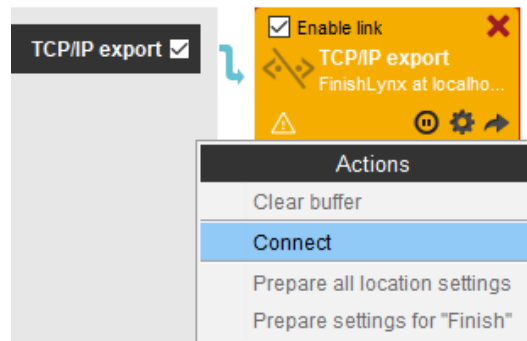


Figure 3

## Setup 4 Connection Status

1. FinishLynx will show **LapTime: Received #** in the status bar (bottom left) when connected to the MYLAPS application. When the connection is not established, **LapTime: NOT CONNECTED** will appear.

Connected: LapTime: Received 0      Not connected: LapTime: NOT CONNECTED

## Setup 5 Synchronization

*EtherLynx cameras with Internal GPS (recommended):*

To sync a MYLAPS decoder with your EtherLynx camera when both devices are synced to GPS time, set the **LapTime|Options... Sync. Source = None**.

Learn how to [synchronize clock to GPS](#), to sync a MYLAPS BibTag decoder to GPS time,  
Learn [HOW TO USE INTERNAL GPS?](#) to sync an EtherLynx camera with Internal GPS.

*EtherLynx cameras without Internal GPS:*

To sync the MYLAPS decoder with your EtherLynx cameras when the camera is **not** synced with Internal GPS (option), set the **LapTime|Options... Sync. Source = Internal** and press trigger a **Gunshot** on the decoder while FinishLynx is running.

**NOTE** – If FinishLynx is restarted, this procedure will need to be repeated. It is best practice to trigger a gunshot at the start of every race.

## Advanced Remote Split Locations - CCNet Server

*For remote split locations using BibTag decoders equipped with a SIM card and cellular network connectivity, enable the CCNet Server.*

1. Go to **File|Preferences|CCNet**.
2. Check the box to **Enable CCNetServer**.
3. Enter your username and password - send email request to [info.americas@mylaps.com](mailto:info.americas@mylaps.com)
4. Click **Register Devices on Server...**
5. Click **Ok**.