

Internal RadioLynx Wireless Start

Quick Start Guide

Introduction

Before you begin, please make sure to download and install your RadioLynx plug-in.

Once your plug-in has been installed, follow the figures and steps below to connect the RadioLynx components and to configure FinishLynx. If you need additional support, please contact us at: **USA (978) 556-9780** or email support@finishlynx.com.

NOTE: Requires **EtherLynx Vision-Series** camera with Internal RadioLynx option.

Part A: Setting up the RadioLynx Wireless Transmitter (Starter)

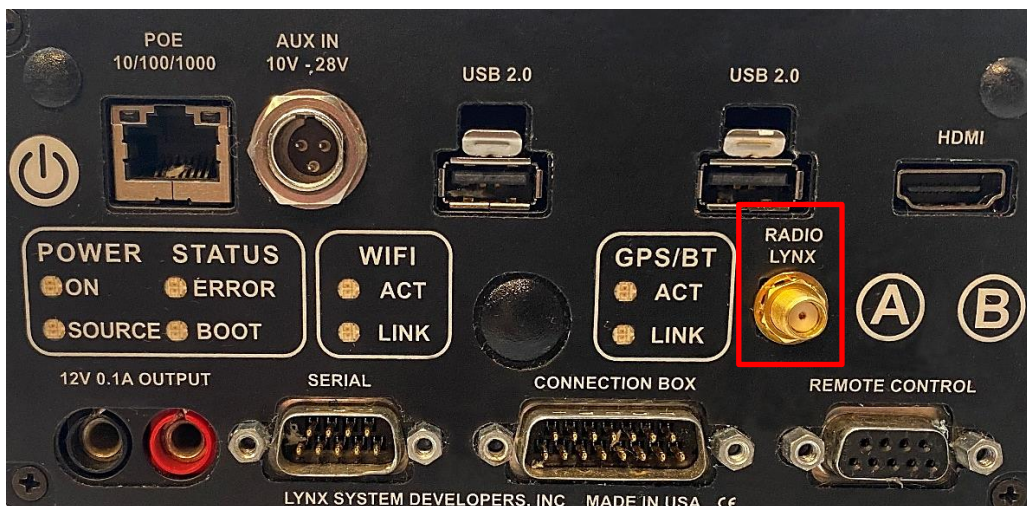
- a. **ON/OFF** button
- b. Banana Plug connection: use **Green** and **Black** connectors.
- c. Connection to Start Signal Generator: use the special **Normally Open Start Sensor** (tipped with red shrink wrap)



Part B: Connecting the Internal RadioLynx Antenna (Receiver)


NOTE: The **RadioLynx Receiver** is built-in the Vision-Series cameras with Internal RadioLynx.

- a. Fasten the **Internal RadioLynx Antenna** to the **RADIO LYNX** connector on the back of the camera.





Part C: Configuring FinishLynx

- a. With the EtherLynx Vision-Series camera set up and turned on, start FinishLynx. The **Hardware Control** screen appears.
- b. Click , the information icon. The **Camera Settings** dialog box appears.
- c. Click the **Inputs** tab and select the **Start Sensor: None** radio button.
- d. Click the **RadioLynx** tab.
- e. Select the **Port: Internal** radio button.
- f. Select the Frequency that matches the RadioLynx Transmitter (EncRadio).

Note: Each **digit** of the *Frequency* (left to right - 0=OFF; 1=ON) matches a **DIP switch** (1 to 4) on the RadioLynx Transmitter (EncRadio). *For example, setting the DIP switches 1=OFF, 2=OFF, 3=OFF, 4=ON is the same as selecting 0001.*

- g. From the **Setup: Id** dropdown list, click to select **000**.

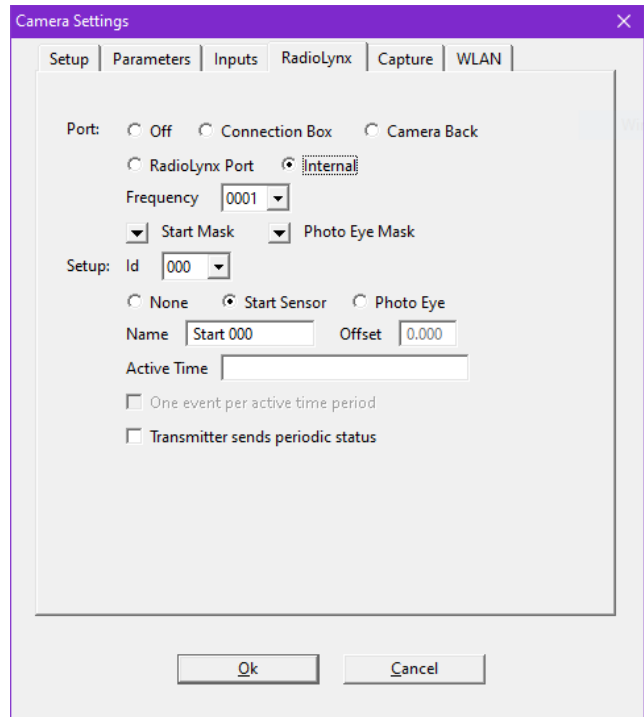
Note: The RadioLynx Transmitter defaults to **Channel 0** and **Signal Type STA**, which corresponds to **Id 000** in FinishLynx.

- h. Select the **Start Sensor** radio button.

Optional: Type a name into the text box provided. If you're using more than one RadioLynx Transmitter, it

is recommended that you name each one something different, e.g. "400 Meter Start," "200 Meter Start," etc.

- i. Click **Ok**.
- j. Turn on the RadioLynx Transmitter and confirm that a start signal is transmitted to FinishLynx by listening for a **beep**.



Note: Three (3) beeps mean the RadioLynx Transmitter batteries need recharging soon. You have approximately 50 start signals remaining after the first triple beep. To view the battery level on the LCD, press the **ON/OFF** button once.

Download a copy:



Contact Technical Support:

Email: support@finishlynx.com

Phone: 978-556-9780

Join Us Online:

Timer's Group: facebook.com/groups/finishlynx

Facebook: facebook.com/finishlynx

Instagram: @finishlynx