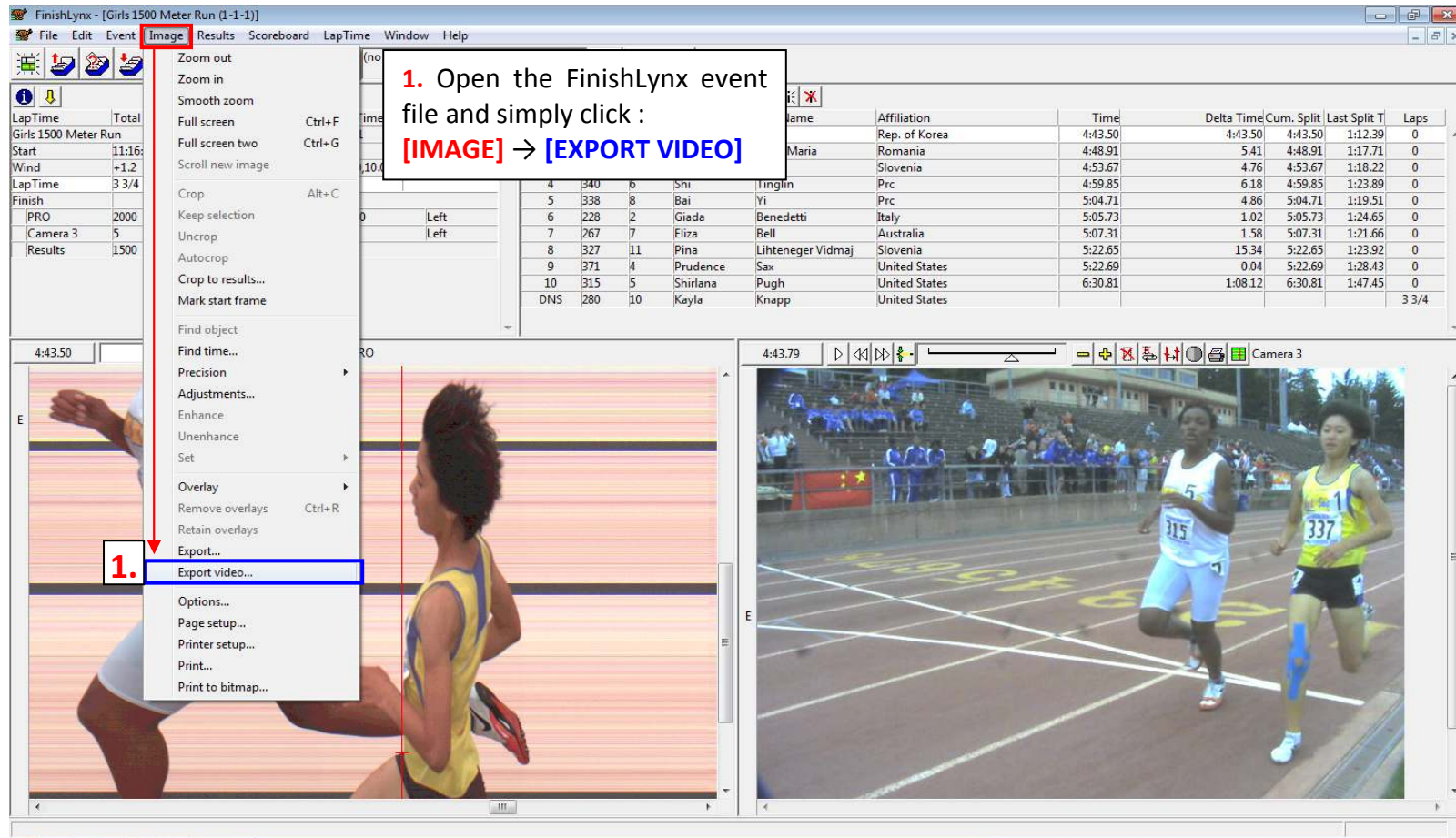


Q: HOW DO I EXPORT IDENTILYNX VIDEOS FROM FINISHLYNX?

A: THERE ARE TWO WAYS TO EXPORT YOUR IDENTILYNX VIDEOS FROM FINISHLYNX. BOTH METHODS ARE LISTED BELOW.

Export Method 1: Export the Entire Identilynx Race Video as a Single .avi File



Export Method 2: Export a Specific Portion of the Identilynx Video (Customize Video Duration and/or Dimensions)

1. Use the slider to choose a point in the video to **begin** your clip.
2. Click the **[Mark Start Frame]** Button to set the **Beginning** frame.
3. Use the slider again to choose a frame where your clip will **end**.

4. Then Click the **[Mark End Frame]** Button to set the **End** of your clip. This sets the duration of your video clip.
5. Hold down the right mouse button and drag a box around the desired capture area. This sets the dimensions of your exported video clip.
6. After drawing the box, release the right mouse button and choose **[Export Video]** on the menu that appears.

BONUS

Upload your Identilynx Videos to YouTube or Facebook to share with athletes, fans, and other Lynx users.

<http://www.youtube.com/user/LynxSystemDevelopers>

<http://www.facebook.com/finishlynx>