

# MANUAL

# CCNET

# Timing & Scoring

---

CAN BE USED FOR



**EXPERIENCE PROGRESS**

## CCNET Account

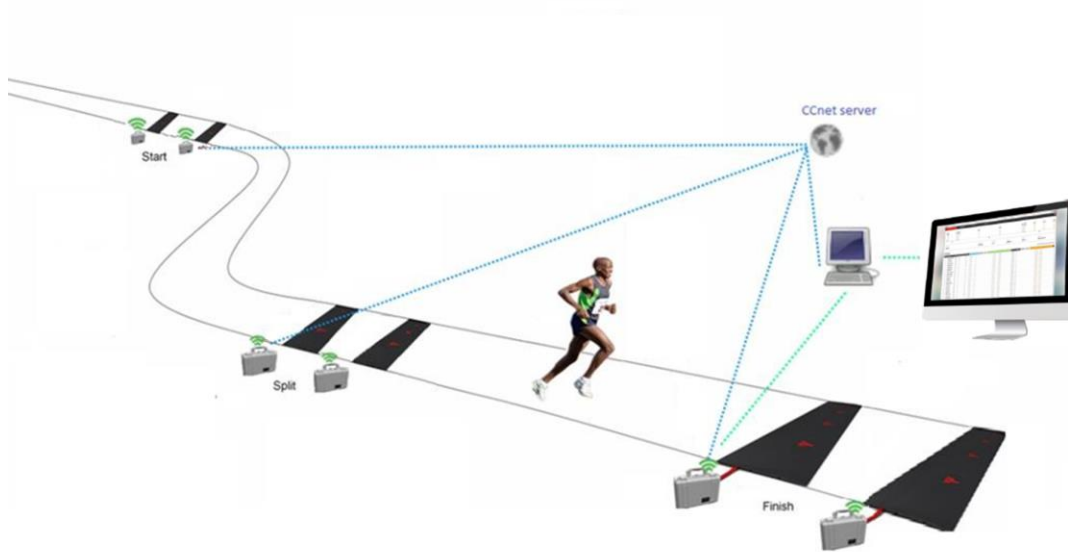
A CCNET account will be created by MYLAPS.

MYLAPS will provide you a login and password.

You can use these credentials on multiple computers.

You'll connect to all decoders with the same account and this way everyone within the same account will be able to see the decoders online.

To download not everyone needs a portal account, you can download and distribute the software. On first installation it will ask for a username and password to legalize the software. You can provide these credentials to everyone who is installing the software or you can install the software for them.



Key functionality of MYLAPS portable equipment

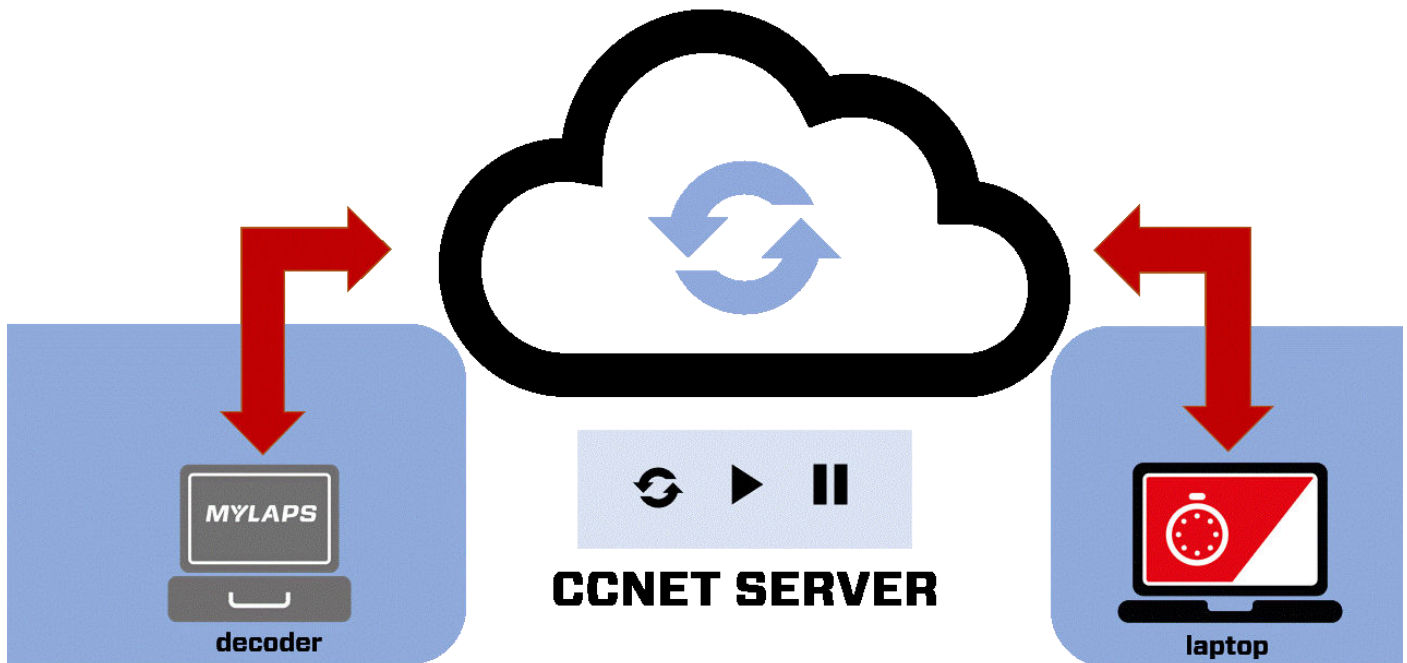
Central pass through server: CCNet server

- Connect Decoders to T&S via internet
- Live Mobile internet connection with split points

2G-3G / GPS modem (Internal GSM modem)

4G or 5G network only possible by 3<sup>rd</sup> party modem (External modem)

## CCNet Server



When connected to a device via CCNet Server, data from the decoder will be exchanged via commands from Timing & Scoring like:

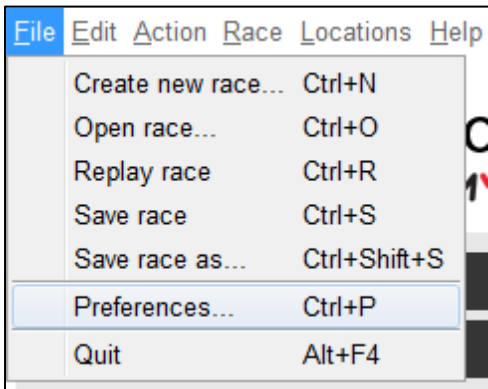
- Play
- Pause
- Rewind

Both the decoder and the laptop have to be connected to the CCNet server on the internet

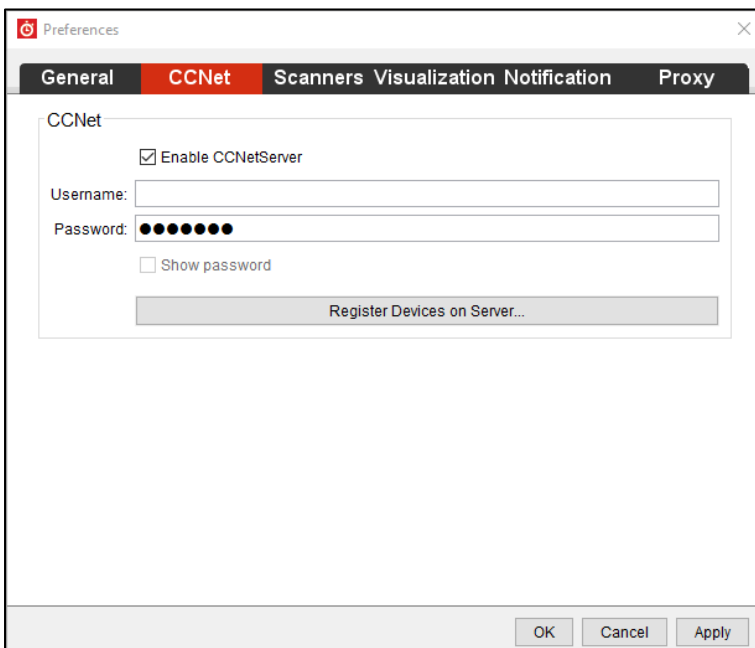
## Registration of a device to the CCNet server by using Timing & Scoring

You can use Timing & Scoring to register devices to the CCNetServer. To be able to register devices on the CCNetServer you need a CCNetServer account which you can obtain by your account manager.

In Timing & Scoring it is easy to get an overview of all the devices that are registered to the CCNetServer in your account. In the menu bar you click on "File" → Preferences



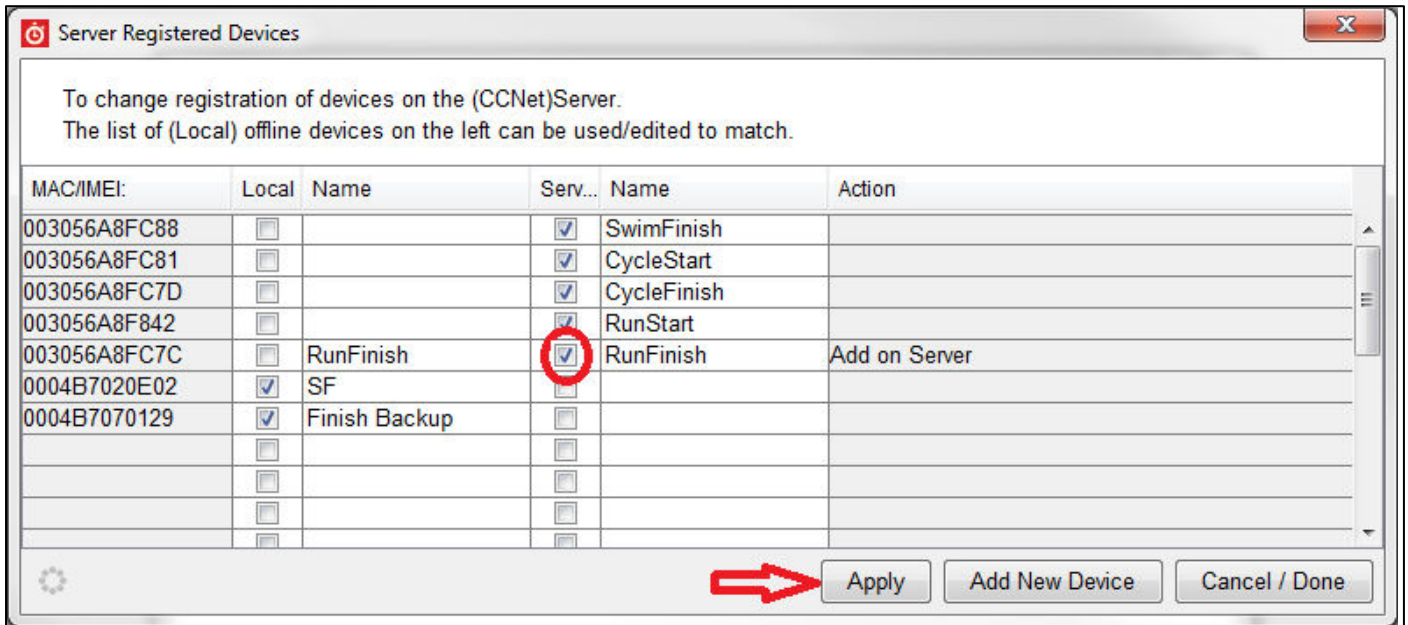
In the preferences screen you open the <CCNet> tab.



Make sure the <Enable CCNetServer> box is checked.

Enter your <username> and <password> and click apply first.

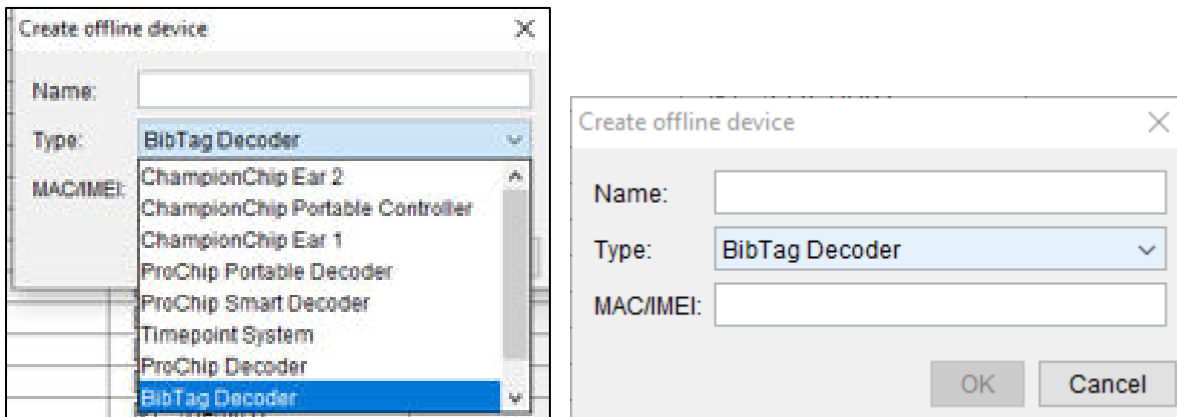
When you press the <Register Devices on Server> button you will get an overview of all devices registered to the CCNetServer under your account and to your local computer (Offline Devices).



The left column shows devices that have ever been connected to your computer (Offline Devices)  
The column on the right shows all the devices registered on the CCNetServer.

To add a device to the CCNetServer you check the box in the <Server> column on the line of the Device's MAC address.  
To de-register a device you can uncheck the box in the server column.

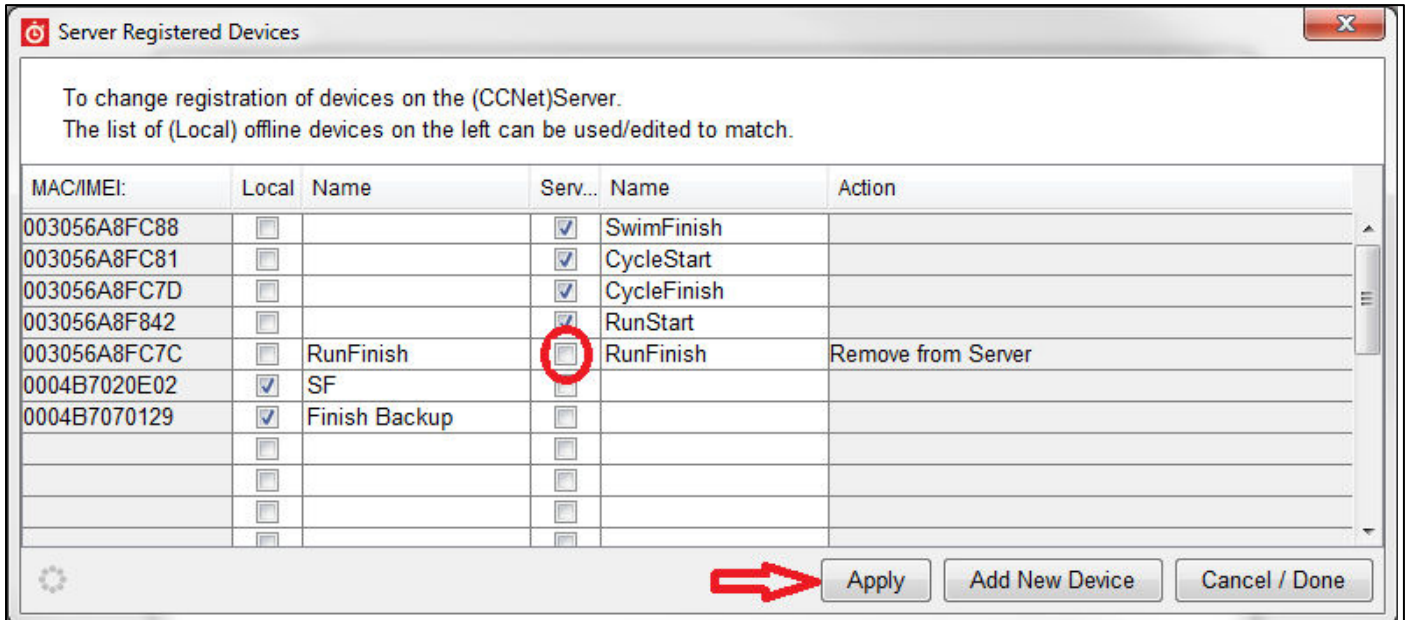
When the device you want to register has never been connected to your computer you can add the device as a new device. Click on <Add New Device>.



Fill in the name of the device, select the correct device type, enter the MAC Address and click <OK>.  
The device will now show in the Offline devices and you are able to register the device to the CCNetServer according the steps described before.

## Removing a device of the CCNet Server by using Timing & Scoring

Open the CCNet overview <file><preferences><CCNet> and click on the <Register Devices on Server> button. Uncheck the box in front of the device you want to remove from the server and click <Apply>



## Support

In case you encounter any issues, please contact your sales offices:

MYLAPS EMEA Office  
Haarlem, The Netherlands  
Tel: +31 23 7600100  
Email: [info@mylaps.com](mailto:info@mylaps.com)

MYLAPS Americas Office  
Atlanta, USA  
Tel: +1 678 816 4000  
Email: [info.americas@mylaps.com](mailto:info.americas@mylaps.com)

MYLAPS Japan Office  
Tokyo, Japan  
Tel: +81 3 6418 8209  
Email: [info.japan@mylaps.com](mailto:info.japan@mylaps.com)

MYLAPS APAC Office  
Sydney, Australia  
Tel: +61 2 9533 1100  
Email: [info.asia.pacific@mylaps.com](mailto:info.asia.pacific@mylaps.com)

MYLAPS Asia Office  
Selangor, Malaysia  
Tel: +60 3 5613 1235  
Email: [info.asia@mylaps.com](mailto:info.asia@mylaps.com)

MYLAPS 24/7  
Only in cases of direct needed support for  
event organizers and companies.  
Tel: +31 23 7600200

Our Frequently Asked Questions (FAQ) can be found on [help.mylaps.com](http://help.mylaps.com)