



Bronze Package

Capture NFHS-Approved Results



The FinishLynx **Bronze Package** is an all-inclusive photo-finish system from Lynx – the leader in Fully Automatic Timing (FAT). With this entry-level timing system, all you need is a laptop to deliver NFHS-compliant results at your Track and Field events.

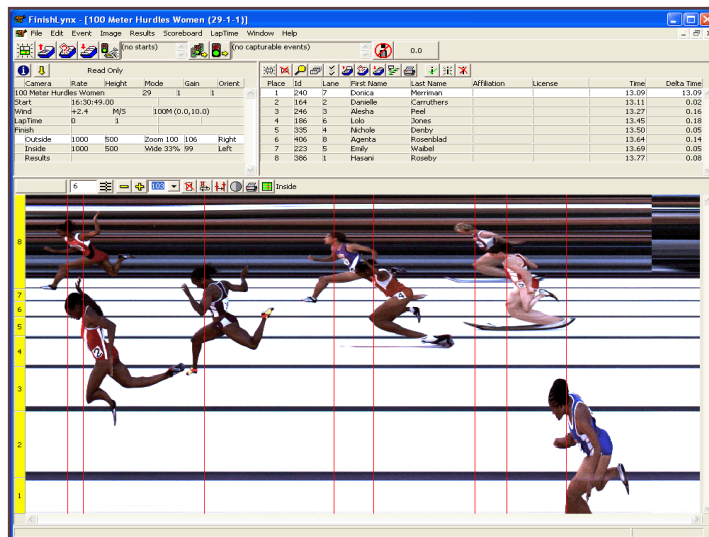
When a program makes the switch to Fully Automatic Timing, everyone involved will benefit: Athletes, Coaches, and Meet Administrators. With FinishLynx, volunteers can be used much more efficiently, resulting in less stress on both officials and volunteers. Hand-timers and stopwatches become completely unnecessary. Also, thanks to our LynxPad software, athlete entries, seed marks, and printing results can be set up with ease.

Administrators and coaches will love the fact that race images are reviewable and accurate to 1/1000th of a second. Disputes over close finishes and athlete ID's will become a thing of the past.

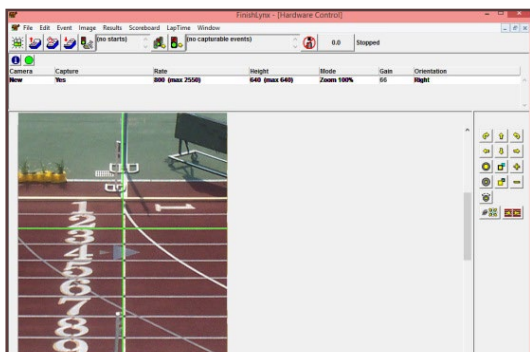
Components

- **EtherLynx Vision™ Camera:** 1,000 frames/second, full-color images, timer-enabled, fully upgradeable
 - EasyAlign™ Full-Frame Video Alignment Mode
 - CS-Mount P-Iris, 2.8-10mm manual zoom lens
 - Internal On-Board Level
- Wired Start System & Capture Button
- Tripod and mounting hardware for precision adjustment
- All-inclusive power, Ethernet, & start cable set
- Full access to Lynx Technical Support
- 1-Year renewable warranty
- **FinishLynx32** – Photo-Finish Software
- **LynxPad** – Event Management Software

Bronze Package: \$9,099



Why Choose the FinishLynx Bronze Package?



EasyAlign Full-Frame Camera Alignment

This NFHS-approved photo-finish timing system is a perfect package for first-time FinishLynx users. At the heart of the system is the **EtherLynx Vision** photo-finish camera, a powerful timing camera that captures results images at 1,000 frames per second (fps) and offers **EasyAlign** for quick alignment on the finish line to ensure accurate results. The **Internal On-Board Level** adds an electronic level inside your Vision camera, allowing you to monitor the camera's level and orientation directly from the FinishLynx software.

The combination of the Vision camera with FinishLynx Software generates a powerful track timing system for athletics programs of any size. Thousands of US high schools already trust their timing to FinishLynx, and with this beginner package, you too can enjoy the benefits of fully automatic timing.

Making the Switch to Photo-Finish Timing

Part of what makes FinishLynx systems so popular is the suite of features available in the FinishLynx timing software. The software is included in the **Bronze Package**, and it allows users to customize their system by supporting key features, plug-ins, and the ability to integrate with 3rd-party devices.

The FinishLynx software can work with every available FinishLynx plug-in, including Automatic Capture Mode (ACM) and RadioLynx Wireless Start. It also includes native support for multiple EtherLynx cameras, along with IdentiLynx 2-D video integration. It can also interface with compatible scoreboard displays and wind gauges. These capabilities are some of the major reasons why many new FinishLynx users insist on the **Bronze Package**.

The modular design of Lynx packages ensures that the **Bronze Package** contains everything needed for powerful FAT results. And, like all FinishLynx Packages, it works seamlessly with LynxPad and other meet management software. If your race or timing needs evolve over time, upgrading your system is as simple as adding new components to the existing package – nothing bought will ever go to waste.



Bronze Package Hardware

- EtherLynx Vision photo-finish camera
 - 1,000 fps – accurate to 1/1000th of a second
 - Full-color results images
 - EasyAlign full-frame camera alignment
 - Internal On-Board Level
- Wired start system
- Manual capture button
- Custom Lynx carrying case
- Tripod, mounting kit & all required cables

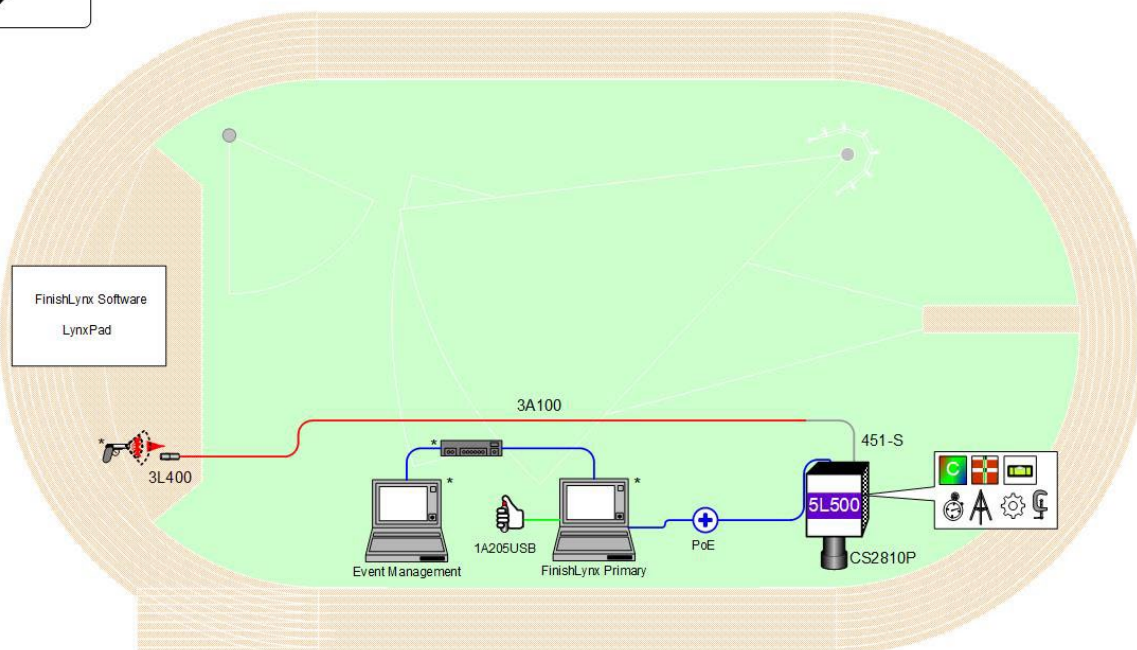
Included Software

- **FinishLynx** – Timing & results software with lifetime updates
- **LynxPad** – Meet management software

Service & Support

- 1-Year Renewable Warranty
- Full access to in-house Tech Support

Bronze - Track



* Computers, Hub, network cable, and starting pistol not included in package

© 1992 – 2025 | Lynx System Developers, Inc. | www.finishlynx.com