

# Vision PRO X

## Datasheet



### Redefining Precision in Photo-Finish Technology

The EtherLynx **Vision PRO X** is the premier photo-finish camera for every sport - delivering unmatched accuracy, exceptional light sensitivity, and breathtaking image resolution. Designed for professionals who demand the best, the ultimate Lynx camera sets a new standard in sports timing and results evaluation.

### Key Benefits at a Glance

- Unparalleled timing accuracy for every sport
- Improved image resolution - by a factor of 6X over previous leading cameras
- Improved light sensitivity - lower noise level facilitates results evaluation
- High vertical resolution - allows higher frame rate and image resolution over wide finish lines
- Wider choice of high-quality F-Mount lenses



### Advanced Features

**Extended Time Accuracy:** Up to 40,000 fps

**Extended Resolution:** Up to 5120 Pixels High

**Extended Light Sensitivity:** Up to LuxBoost 16

**Extended Choice of F-Mount and C-Mount Lenses**

**Extended Features:** Inclusive of Most Possible Options

### Perfect For

High Velocity Sports & High Resolution Images

Wide Finish Lines & High Resolution Images

Events Under Artificial Lighting

High-Quality Lens Options (F-Mount Adapter Included)

Adding GPS, Level, EVF, PLC, LuxBoost, Frame Offset, etc.





# Vision PRO X

## Datasheet

Race 9 - G1 Saudi Cup - 1800m - 0Y ONLY - February 24th 2024 (1444-104-9) 1:49.50 100 6000 90909 Show Form Filling Toolbar

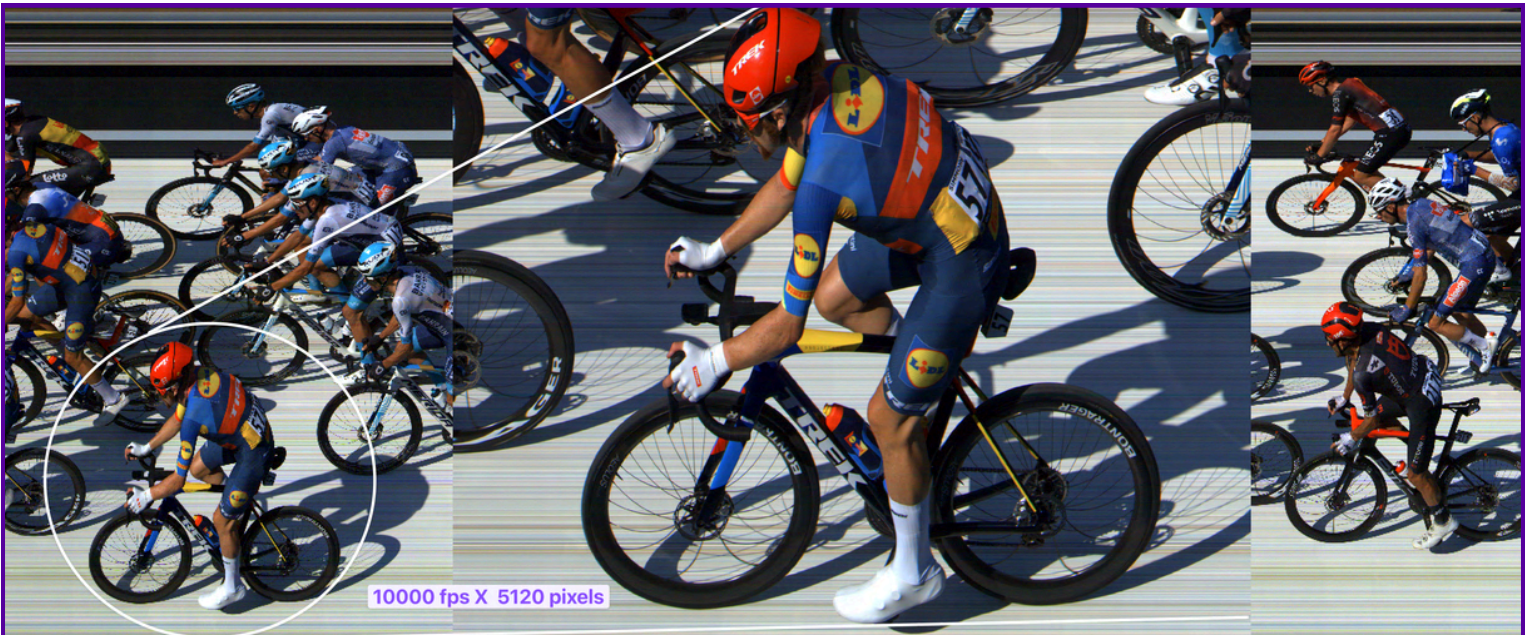


Race 9 - G1 Saudi Cup - 1800m - 0Y ONLY - February 24th 2024 (1444-104-9) 1:49.48 220 2200 Sand Main



### Unparalleled Image Resolution & Exceptional Light Sensitivity

Despite camera covering a 26 m wide finish line imposing a 1.1/1 capture ratio, the Vision PRO X is capable of 6000 fps. Despite a disadvantage of 4X illumination (6000/2200fps - f/2.8/f/1.8 lens) the Vision PRO X delivers better resolution with less noise.



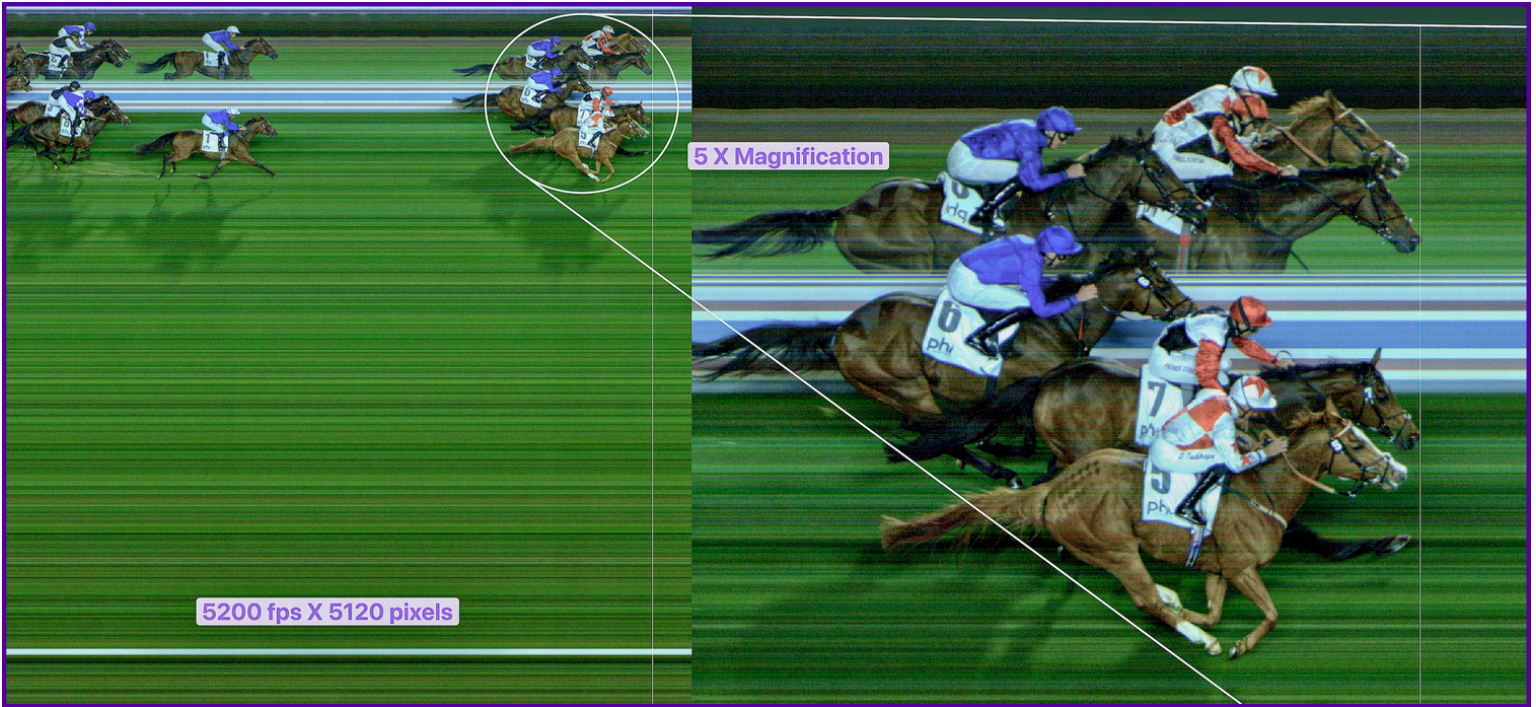
The Vision PRO X delivers exceptional clarity across all sports.

*Discover how the Vision PRO X can transform your photo-finish experience*



# Vision PRO X

## Datasheet



The Vision PRO X extended vertical resolution ensures precise adjudication, even when competitors occupy minimal sensor space, making it ideal for wide racecourses such as in rowing or horse racing.



### Night Racing under Floods @ 12,000 fps

Low-light? No problem. Enhanced light sensitivity ensures superior results in any lighting condition.

*Discover how the Vision PRO X can transform your photo-finish experience*



# Vision PRO X

## Datasheet

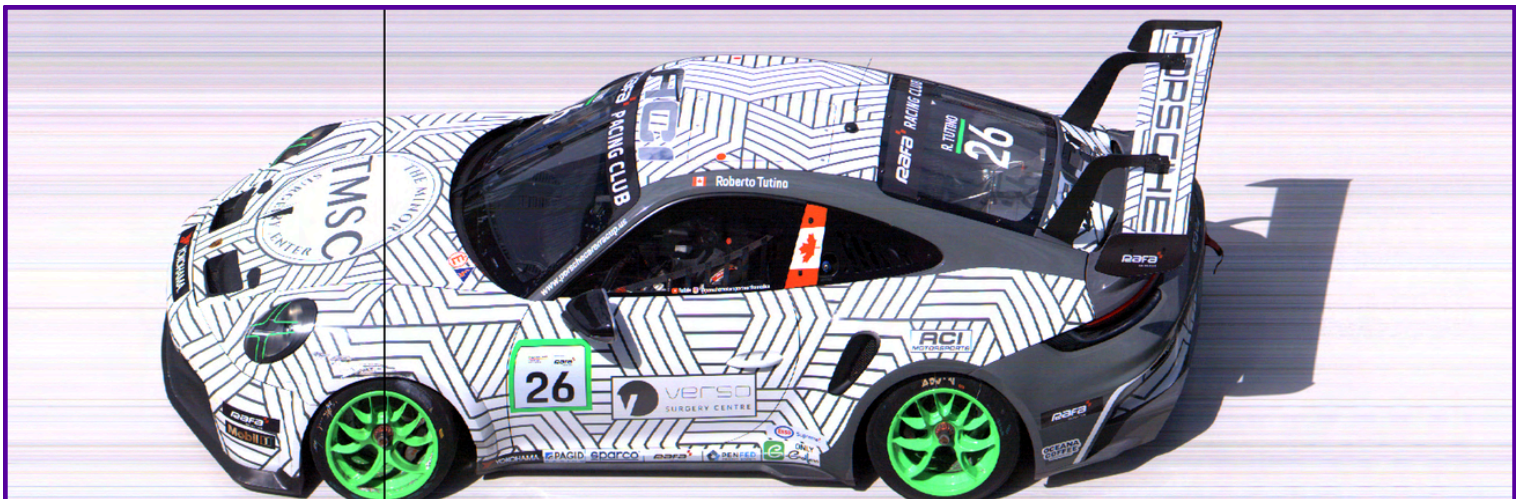
### Night Racing @ 25,000 fps

Camera positioned at 75 m from track  
Lens f/2.8 - Illumination less than 1000 lux



### Exceptional Light Sensitivity

Low-light? No problem. Enhanced light sensitivity ensures superior results in any lighting condition.



### Unparalleled Image Resolution & Time Accuracy - High Velocity Sports

At 250 km/h, 1/1000 sec. = 7cm; at 40,000 fps = 1.7 mm.

The Vision PRO X is an essential complement to a Transponder System.

*Discover how the Vision PRO X can transform your photo-finish experience*



# Specification Data

|                             |   |
|-----------------------------|---|
| Sensor Type                 | CMOS Array (single line in photo-finish mode)   |
| Frame Rate                  | Continually Adjustable from 100 to 40,000 fps<br>At any vertical resolution and LuxBoost Level  |
| Vertical Resolution         | Up to 2560 pixels @Zoom 100% - Up to 5120 pixels @Zoom 200%<br>Continuously Adjustable - Selective Active Pixels w/Frame Offset   |
| Low-Light Sensitivity       | Up to 16 Levels of LuxBoost (4 f/stops) (user selectable)   |
| # Colors/Pixel              | Up to 2 million colours (user selectable)   |
| Time Base                   | 0.5 Part per Million (0.0005s per 16.7min) - Temperature Compensated  |
| Standard Characteristics    | Internal GPS Synchronization<br>2D Wireless Electronic Viewfinder Functionality<br>Internal Inclinometer<br>Real-Time Lossless Image Compression<br>Hardware and Software Gamma Control<br>Phased Light Compensation<br>IR Filter |
| Lens Mount                  | Standard F-Mount with Remote Iris & Focus Control<br>Optional C-Mount with Reduced Vertical Resolution  |
| Automatic Luminance Control | Auto-Iris, Auto-Gain, Auto-LuxBoost   |
| PC-Connection               | 1Gbps - 802.3 Ethernet Topology   |
| Distance Camera to Computer | Typical 100m w/ Cat 6/7 - 2000m w/MM Fibre Optic  |
| Custom Settings             | Control & Display Multiple Cameras from Single Computer<br>Mix & Match with Previous Generations of Lynx Camera Models<br>Unlimited Number of Easy Recall Configuration Templates   |
| Optional Add-On             | Internal Battery Backup<br>External Battery and AC Power Supply<br>802.11 Wireless Connectivity<br>C-Mount with (Reduced Vertical Resolution)   |
| Power Inputs                | <b>Standard:</b> 802.3at POE+<br><b>Options:</b> 100-240 VAC w/ adapter or 12v DC input   |
| Operating Temperature       | -10 to 60° C  |
| Camera Dimensions & Weight  | 17cm x 7.5cm x 15.5cm / 2.1 Kg  |
| Approvals                   | FCC, CE, ICES   |