

Release Notes

FinishLynx 13.00

Obtaining Lynx Products and Information	1
Obtaining Technical Support	1
What's New	2
Vision PRO X support	2
Iris Control for E-Type F-Mount Lenses	2
Wireless Electronic View Finder (for Vision PRO X only)	2
Faster Asynchronous Image Transfer	3
Network ComPort (NCP) Plug-in included by default	3
VeriLynx Updates	3
VeriLight Update	3
ADVANCED - Other Settings	4

Obtaining Lynx Products and Information

There are three ways to obtain Lynx products and information:

- » Go to the Lynx website (<http://www.finishlynx.com/product/>)
- » Call (978) 556-9780 and ask to speak with someone in sales, or
- » Send an email to...
 - Domestic Sales: domsales@finishlynx.com
 - International Sales: intlsales@finishlynx.com

Obtaining Technical Support

There are four ways to obtain technical support for Lynx products:

- » Go to the Lynx website (<http://www.finishlynx.com/support/>)
- » Find our latest video tutorials on YouTube (<https://www.youtube.com/c/FinishLynx/videos>)
- » Call (978) 556-9780 and ask to speak with someone in tech support, or
- » Send an email to...
 - Technical support: support@finishlynx.com



What's New

Vision PRO X support

Support is added for the [Vision PRO X](#), the latest EtherLynx Vision-Series camera.

Iris Control for E-Type F-Mount Lenses

In addition to mechanical iris controls, F-Mount lenses with an electronic diaphragm can be controlled via the lens contacts. No cable is required from the F-Mount adapter to the camera's remote port.

This is now supported and tested for the following lenses:

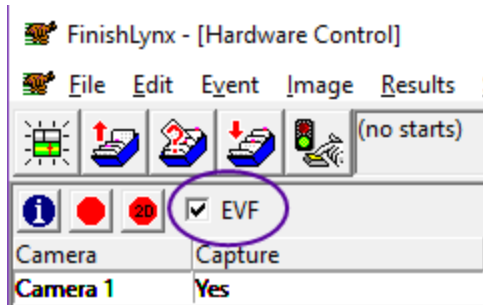
- » AF-S NIKKOR 24-70mm f/2.8E
- » AF-S NIKKOR 70-200mm f/2.8E
- » AF-S NIKKOR 120-300mm f/2.8E
- » Sigma 14-24mm f2.8 DG HSM
- » Sigma 24-70mm f/2.8 DG OS HSM
- » Sigma 70-200mm f/2.8 DG OS HSM
- » Sigma 105mm f/1.4 DG HSM
- » Tamron SP 15-30mm f/2.8 Di VC USD G2
- » Tamron SP 24-70mm f/2.8 Di VC USD G2
- » Tamron SP 70-200mm f/2.8 Di VC USD G2

NOTE: This feature requires the latest F-mount adapter. Legacy support for focus and mechanical iris remain. Supported by Vision PRO and Vision PRO X cameras.

Wireless Electronic View Finder (for Vision PRO X only)

The Electronic View Finder (EVF) function for the Vision PRO X is available wirelessly from a web browser on your mobile device.

- » To output the alignment view to your mobile device:
 1. Click the *1D* or *2D* alignment buttons.
 2. Check the **EVF** box on the Hardware Control window in FinishLynx.
 3. Go to the Wi-Fi settings on your mobile device:
 - a. Connect to camera's wireless network: **5L700_[SN]**
 - b. On your mobile device, confirm you want to connect, even if no Internet is available.
 4. Open a web-browser on your mobile device.
 5. Go to **192.168.4.1:8080**



NOTE: The wireless network of the camera is only available when the EVF box is checked.

TIP: Remote Operations: Alignment mode can also be controlled by pressing the A button on the camera back. Each press will cycle through different views - 2D Zoom 100% > 2D Zoom 200% > 2D Zoom 400% > 1D 100%.

Faster Asynchronous Image Transfer

On a multi-camera network, all cameras transfer images on separate threads, making image transfer faster and less prone to delays caused by slower, older cameras.

Network ComPort (NCP) Plug-in included by default

The Network ComPort options are now part of the standard FinishLynx installation and available to all users. Network (connect/listen) options will always appear in the relevant **Serial Port**: drop-down menu.

VeriLynx Updates

- » **Crop to Results** is now available from the **Image** menu to remove VeriLynx images between attempts and reduce the file size. By default, only 5 frames before and after each entered timestamp will be kept (user configurable).
 - Note:** If you crop and then save, images cannot be recovered.
- » **VeriLynx_RCP_2_boards.lss** supports exporting the image from two VeriLynx cameras set up at two different jump boards.
- » **DE_VL.lng** allows using the VeriLynx profile in German.

VeriLight Update

- » **Verilight_ready.lss** VeriLight turns red when the first result is entered if no photoeye is used.

NOTE: Run FinishLynx as Administrator (right-click shortcut + Run As Administrator) for best performance.

TIP: For more information, check out our video tutorials on [YouTube](#).



ADVANCED - Other Settings

Additional *Other (hidden)* settings are included:

- » **Event\Image\ExportBitMap\MaxMemory** defaults to 128000000. Increase if Export BitMap... function takes too long.
- » **Event\Image\Overlay\Lines\FastScrolling** improves horizontal scrolling when line labels are used. Legacy behavior = 0.
- » **Hardware\AIC\BadTries** defaults to 75.
- » **Hardware\Align2D\CLOffset/[On][OrientLeft][OrientRight]** Internal use. Allows moving the location of the green alignment line in 2D Easy-Align based on image orientation (does not impact 1D align/capture). Vision PRO X only.
- » **Hardware\Align2D\Width** defaults to 256.
- » **Hardware\Ethernet\AsyncCapture** defaults to 3.
- » **Hardware\Ethernet\ImageBlockMTU** defaults to 16000.
- » **Hardware\Sensor\AnalogGain** Sets the analog gain method. Internal use. Vision PRO X only.
- » **Hardware\Sensor\DigitalGainMin** Sets the digital gain base value. Internal use. Vision PRO X only.
- » **Hardware\Sensor\PixelFloor** Sets to floor pixel value. Internal use. Vision PRO X only.