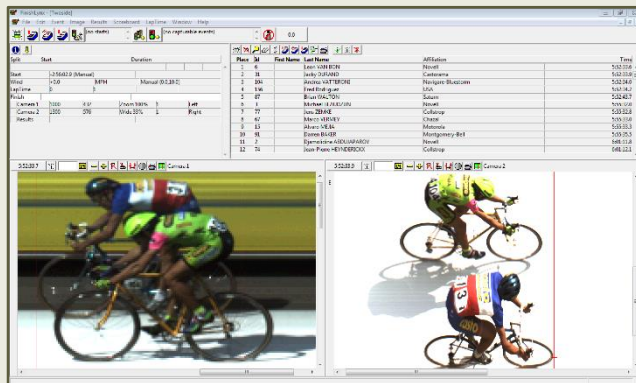




GOLD PACKAGE

The **Road Cycling Gold Package** is arguably the finest timing system available for cycling today. It is designed to meet all the demands of large, fast-paced cycling races while providing timers with elite features and technology. The Gold Package is a dual-camera system that includes two versions of our most powerful photo-finish camera: the **EtherLynx Vision PRO**. The primary Vision PRO captures up to 6,000 fps and includes the **Enhanced Zoom** upgrade that enables vertical image heights up to 2,048 pixels for better coverage of wide finish lines.

The second Vision PRO is a non-timing camera with 3,000 fps captures and a wireless upgrade to transfer data over a Wi-Fi network. It is a perfect backup camera for reverse-angle images on the far side of the finish line. The reverse-angle images are synced with the primary camera to provide dual-angle results no matter how close the finish. Both cameras also include **EasyAlign** video alignment mode, Electronic Filter Controls, On-Board Levels, motorized zoom lenses, and LuxBoost low-light capture mode for better images in dark conditions. The screenshot below shows how dual-angle cameras provide clear results from opposite sides of the finish line.



Gold Package Features

- Two-camera setup ensures accurate results by synchronizing photo-finish images from both sides of the finish line.
- Wireless connectivity and the ability to run from a 12-volt DC supply provide incredible freedom for camera locations and eliminate the need for complex cabling.
- The gold package covers all your needs with features like 6,000 fps photo-finishes, low-light capture tools, wireless networking, an LED display, and powerful software plug-ins.

Components

Two Powerful Photo Finish Cameras:

- **EtherLynx Vision PRO** – color, timer-enabled, 6,000 fps upgrade, 2,048 vertical pixels
- **EtherLynx Vision PRO** – color, 3,000 fps, 1,024 vertical pixels, wireless-enabled

Both Cameras Come Equipped with:

- **EasyAlign** 2-D Video Alignment Mode
- **LuxBoost** Low-Light Capture Mode
- **On-Board Level & Electronic Filter Control**
- **C-Mount 12-75mm Motorized Zoom Lens**
- Super Head Clamp, Geared Mounting Head, and Tripod for precision adjustment

The Gold Package Also Includes:

- AirLynx Wireless Gateway
- All-inclusive Camera Cable set with Capture Button and USB-to-Serial Converter
- 9" Five-Digit LED Display
- 10/100 base-8 Port Ethernet Switch
- 15-meter range Single Photocell Kit
- Custom carrying case
- **LynxPad** – Meet management software
- **FinishLynx 32** – Multi-language* photo finish software.
 - Time Trial Plug-in
 - Virtual Photo Eye and Auto-Capture Plug-ins

* See Website for current listing. FinishLynx available in English, Spanish, French, Arabic, German, Italian, Korean, Portuguese (Brazil), Russian, Swedish, Finnish, Chinese (Simp.), Chinese (Trad.), Japanese

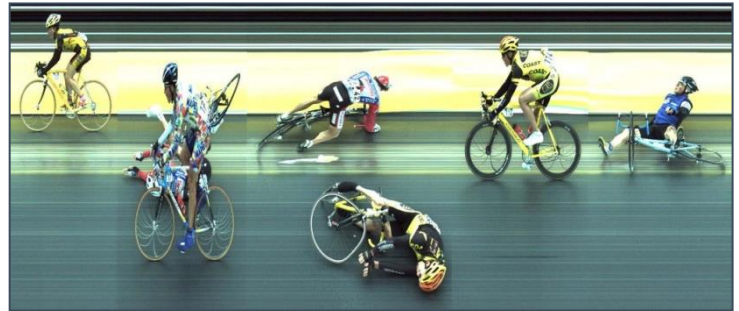
Time Trial Software

The Time Trial plug-in for FinishLynx makes it easy to configure race data and results across multiple time trial stages. The software plug-in allows you to assign individual start times to every rider and read/compare net times in real-time for fast and accurate results. The Time Trial plug-in is compatible with a variety of starting devices, including FinishLynx timing cameras, RFID transponders, tape switches, gates, or photo-cells. The plug-in is essential for managing complex races with FinishLynx.

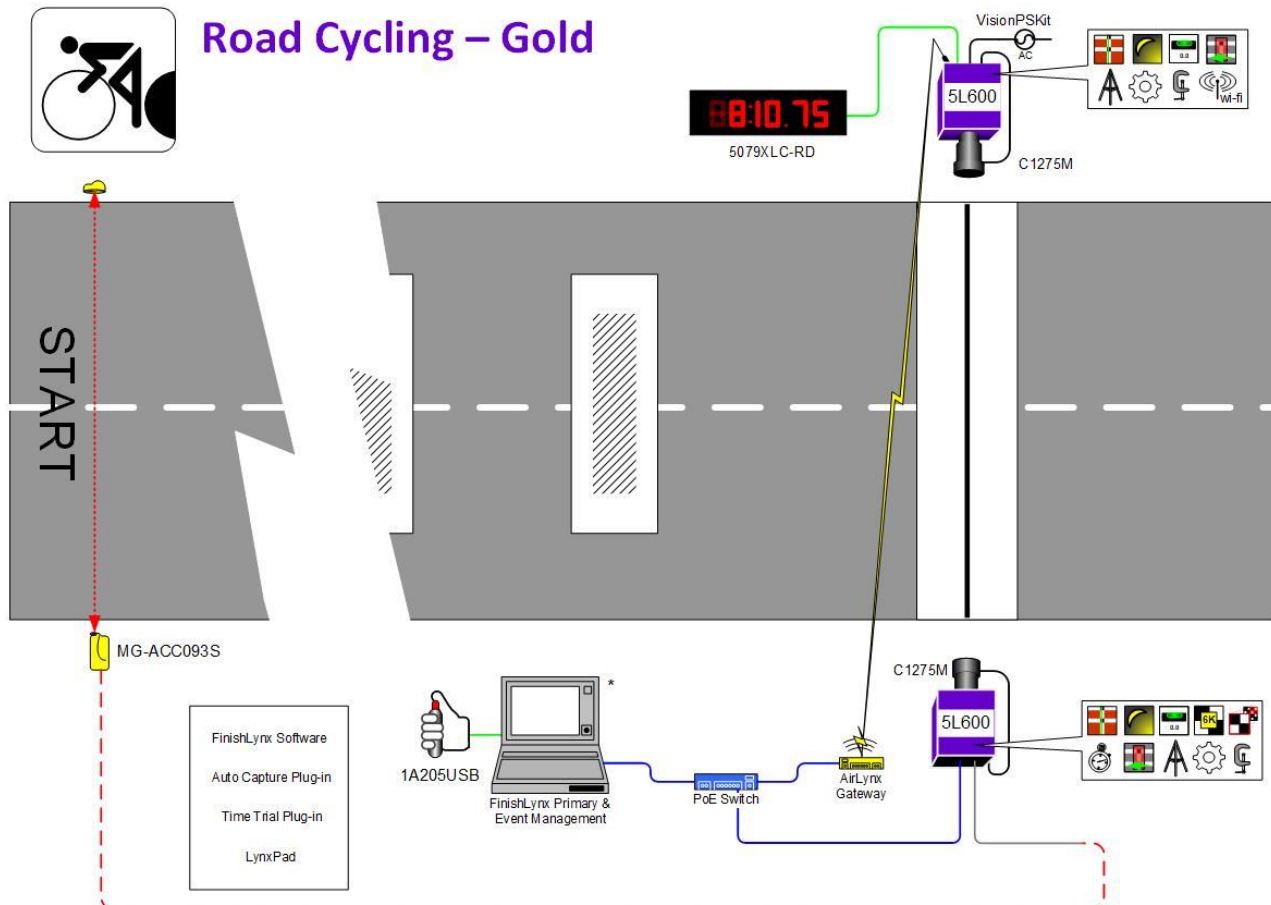
The FinishLynx Gold Package

The Road Cycling Gold Package is built to be the ultimate solution for cycling timing and event management. Because the system is equipped with two Vision PRO cameras with LuxBoost, the Gold Package allows for an unrivaled degree of flexibility through varying events and conditions. When you add components like the 5-digit reflective display, AirLynx wireless, Photocell Kit, and Time Trial Plug-in, the Gold Package is undoubtedly the most powerful system available for cycling results today.

The Gold Package can also be combined with RFID transponders systems, photo-cells, scoring software, and other third-party components, so you can integrate 6,000 fps photo-finishes into your existing timing and scoring workflow. More importantly, all FinishLynx systems are modular so components can be added, upgraded, or interchanged to as your needs change over time. Add features like higher frame rates, wireless starts, time-synced video cameras, and more. Join the thousands of clubs across the world that already trust their race results to FinishLynx. Make an investment in a FinishLynx timing system and start producing beautiful, accurate, time-stamped results at your next race.



Road Cycling – Gold



** Cable is ordered separately
* Computer not included in Package

** C43-XXXX (Time Trial start cable - "XXXX" based on distance between start and finishline)