



# Lynx Wind Gauge

## Quick Start Guide

Please verify that your WG-Lynx Wind Gauge contains the components pictured below.  
If not, or if you need additional support, please call: **USA (978) 556-9780**

### Lynx Wind Gauge Components

Item	Description	ID
	FinishLynx-compatible wind gauge	WG-Lynx
	Wind Gauge Input Cable	N/A
	200 Foot XLR Cable	C43-200

### Additional Equipment Required

- **Hardware:** Lynx timing system and camera hardware
- **Computer:** Laptop running any recent version of Microsoft Windows
- **FinishLynx Software:** [www.finishlynx.com/product/software/finishlynx-results-software/](http://www.finishlynx.com/product/software/finishlynx-results-software/)

### Step 1: Set Up the FinishLynx Camera and Computer

- Using the QSG for your camera package, set up your camera and load it into the computer.
- Make sure to connect the Connection Box to the camera using the supplied 15-pin cord and the Connection Box port on the back of the camera.

Find your QSG on our website at:

[www.finishlynx.com/support/quick-start-guides/](http://www.finishlynx.com/support/quick-start-guides/)



## Step 2: Set Up and Connect the Wind Gauge

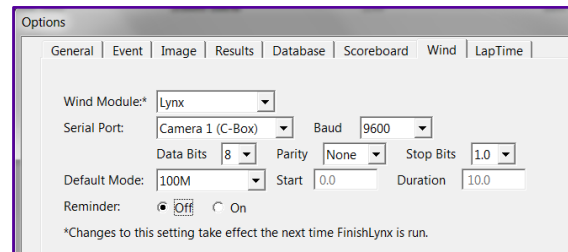
- Place Wind Gauge on top of the tripod.
- Using the supplied 200 Foot XLR extension cable, connect the male end to the Wind Gauge XLR port.
- Connect the female end of the XLR cable to the provided Wind Gauge Input Cable.
- Connect the Wind Gauge Input Cable to the Connection Box serial port and the power leads to the color-coded red and black 12VDC ports on the Connection Box.



- When the Gauge is receiving power, the red light next to the XLR port on the Gauge will start to blink.

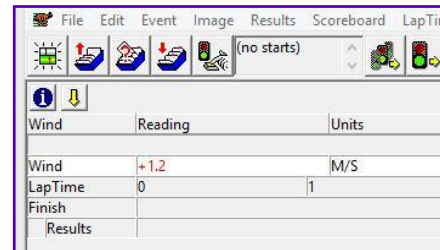
## Step 3: Configure Settings in the FinishLynx Software

- Start the FinishLynx Program.
- Open the FinishLynx Options menu by selecting **File** then **Options**, and go to the **Wind** tab. The options should be configured as shown below. After doing so, close and reopen FinishLynx.



## Step 4: Send a FinishLynx Start Impulse

- Open a new race for testing.
- Start the race using a start sensor or manual start. Wait for 10 seconds and a wind reading will appear.



Download a copy:



Contact Technical Support:

**Email:** support@finishlynx.com

**Phone:** 978-556-9780

Join Us Online:

**Timer's Group:** facebook.com/groups/finishlynx

**Facebook:** facebook.com/finishlynx

**Instagram:** @finishlynx