



MYLAPS Timing & Scoring

FinishLynx LapTime Integration QSG

Quick Start Guide (v1.00)


Introduction

The following guide will walk you through the configuration of **FinishLynx** and **MYLAPS Timing & Scoring**, to allow the integration of laptime data into **FinishLynx**. If at any point you need additional help, please contact Technical Support: support@finishlynx.com.

REQUIREMENTS

1. FinishLynx software (version 12.10 or newer):
 - a. LapTime plug-in (www.finishlynx.com/product/finishlynx-plugins/lap-time/)
 - b. Network COM Port plug-in (www.finishlynx.com/product/finishlynx-plugins/network-com-port/)
2. MYLAPS Timing & Scoring software:
 - a. Login to the [MYLAPS Partner Portal](#). You will have received an email to reset your password.
 - b. Click on **Support**.
 - c. Scroll down and click on **Timing & Scoring**.
 - d. Click to **Download Timing #.#.#** and **Timing and Scoring** manual.
 - e. Install **MYLAPS Timing**.

Setup 1 Configure FinishLynx Options

1. Start **FinishLynx**.
2. Go to **File | Options... | LapTime tab**.
3. Click New to create a new LapTime device. See Figure 1 for recommended settings.
4. Go to **File | Options... | Results tab**.
5. Scroll through the fields and  enable the following:
 - a. Cumulative Split Time
 - b. Last Split Time
 - c. Laps
6. Go to **File | Options... | Image tab**.
7. Select a color for **Show Lines: Splits**.
8. Click **Ok** to close the **Options** dialog.



9. Optional Settings

- a. Hold Ctrl+Shift and go to **File|Options...** to open the Other (Hidden) Settings.
- b. Expand **+LapTime**.
 - i. **FillInTime**: set value: 2 to have the laptimes fill the Time field on the last lap, even if an EtherLynx camera is used.
 - ii. **IdMaxSize**: for BibTags, set to 5 to remove the Group ID from tag encoding.
 - iii. **IdStripZeros**: for BibTags, set to 1 (on) to remove leading zeros from tag encoding.
 - iv. **TotalLaps**: set to total number splits (1 for single finish decoder). Can be changed in Information Zone of each event.
 - v. **IntSyncMask**: for BibTags, set to 2 (guns) if camera is not synced to GPS.

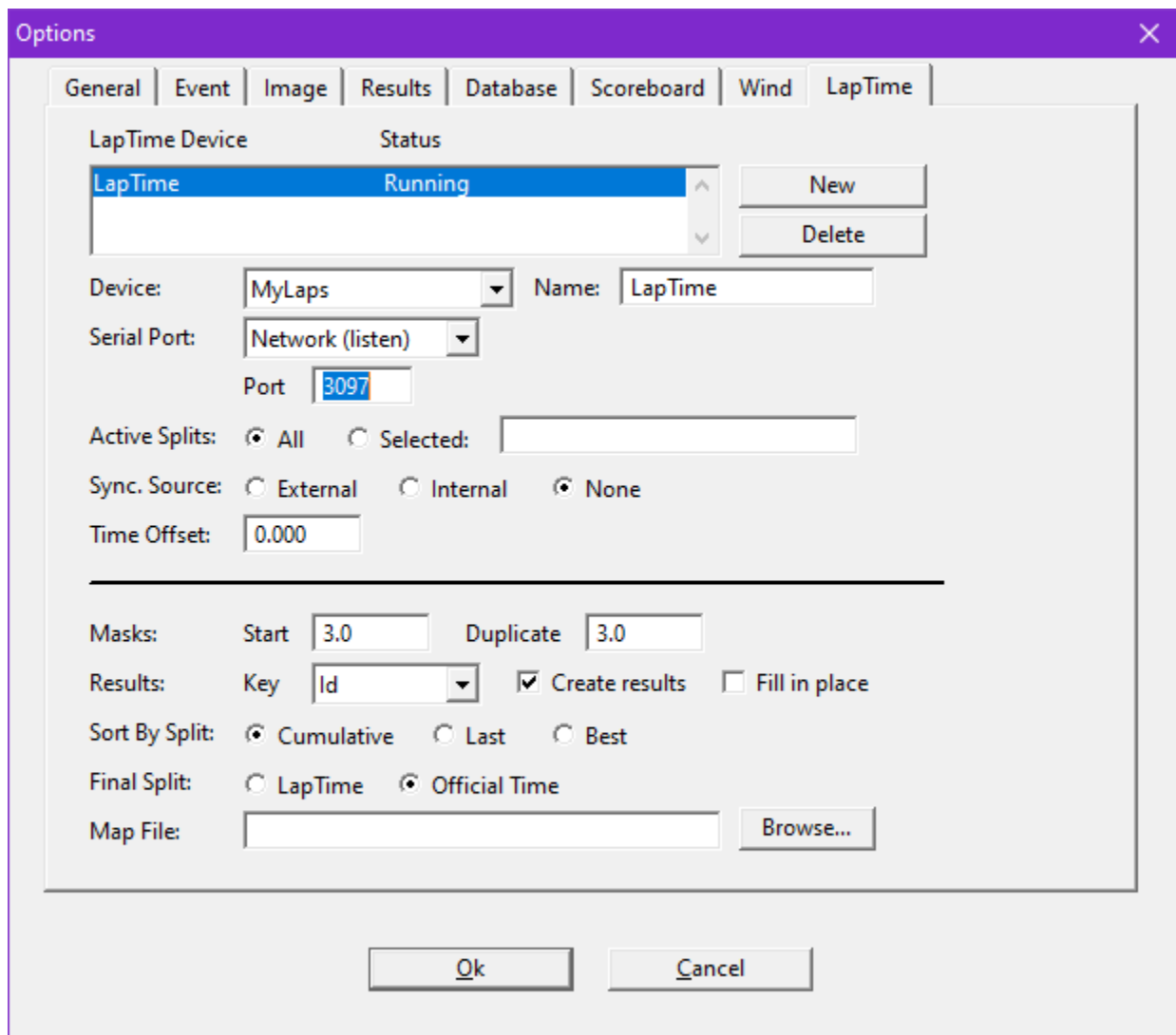



Figure 1



Setup 2 Configure MYLAPS Timing & Scoring (Exporter)

1. Double-click the **Timing 64** shortcut.
2. Login in using your MYLAPS Portal credentials.
3. Select **Start a new event** and click **Ok**. (Optional - Enter the Event name: and Start date)
4. Go to **File|Preferences...** and find the **Usage and Sync** box. Check the box to **Create an “Allow all tags” import rule by default** and click **Ok**.
5. Click the **Add device** button, select your decoder, and click **Assign**. (Optional – Enter a location name)
 - a. Click the  icon on to the decoder line and select **Load all data (Start from the beginning)**.
 - b. Click the **Play** button on File 1.
6. Click the **Add Exporter** button and select **TCP/IP Export**.
 - a. Click the cog wheel to configure the TCP/IP Export. See Figure 2 for recommended settings.
NOTE – If Timing & Scoring is running on a different PC, enter the IP-Address of the FinishLynx PC.
7. Check the **TCP/IP export** box on the location banner.
8. Click the arrow and **Connect**. See Figure 3.

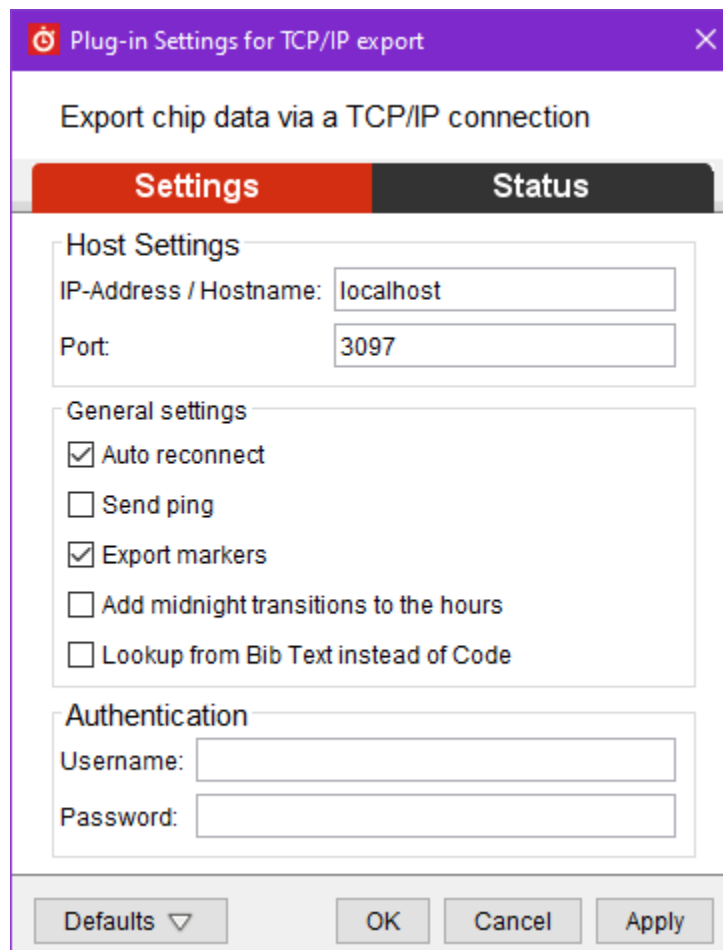


Figure 2

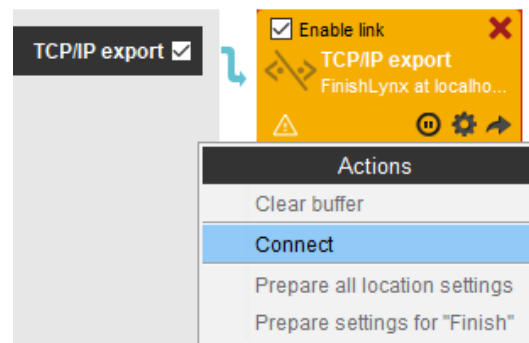


Figure 3

Setup 4 Connection Status

1. FinishLynx will show **LapTime: Received #** in the status bar (bottom left) when connected to the MYLAPS application. When the connection is not established, **LapTime: NOT CONNECTED** will appear.

Connected: LapTime: Received 0 Not connected: LapTime: NOT CONNECTED

Setup 5 Synchronization

EtherLynx cameras with Internal GPS (recommended):

To sync a MYLAPS decoder with your EtherLynx camera when both devices are synced to GPS time, set the **LapTime|Options... Sync. Source = None**.

Learn how to [synchronize clock to GPS](#), to sync a MYLAPS BibTag decoder to GPS time,

Learn [HOW TO USE INTERNAL GPS?](#) to sync an EtherLynx camera with Internal GPS.

EtherLynx cameras without Internal GPS:

To sync the MYLAPS decoder with your EtherLynx cameras when the camera is **not** synced with Internal GPS (option), set the **LapTime|Options... Sync. Source = Internal** and press trigger a **Gunshot** on the decoder while FinishLynx is running.

NOTE – If FinishLynx is restarted, this procedure will need to be repeated. It is best practice to trigger a gunshot at the start of every race.

Advanced Remote Split Locations - CCNet Server

For remote split locations using BibTag decoders equipped with a SIM card and cellular network connectivity, enable the CCNet Server.

1. Go to **File|Preferences|CCNet**.
2. Check the box to **Enable CCNetServer**.
3. Enter your username and password - send email request to info.americas@mylaps.com
4. Click **Register Devices on Server...**
5. Click **Ok**.