

## IdentiLynx Full-Frame Video Cameras

The **IdentiLynx SR and HRS** are Ethernet-based, full-frame digital video cameras that integrate with EtherLynx photo-finish cameras to produce time-stamped finish line videos. IdentiLynx video cameras provide high-resolution/speed, front-facing video that is time-synchronized inside the FinishLynx software to quickly and accurately identify competitors at the finish line.

This generation of IdentiLynx cameras also offers several improvements over past IdentiLynx models. The cameras include an auto-iris motorized lens so the zoom and focus can be adjusted remotely within the FinishLynx software while the Iris adjusts automatically. It also has a sturdy housing that protects the lens and rear connections from moisture and damage. Set up the IdentiLynx camera at your finish line and start capturing time-stamped videos at all your races.

### Compare the Packages

While many Lynx operators choose to add IdentiLynx video to their photo-finish setup, it's possible to purchase the full-frame video camera as a standalone package. This can make a great addition to a chip timing system, or better yet, to complete the Lynx Triad solution (RFID, Photo-Finish, & Video). The SR and HRS IdentiLynx packages both come equipped with everything you need to add video to your next event. Compare the two packages below:

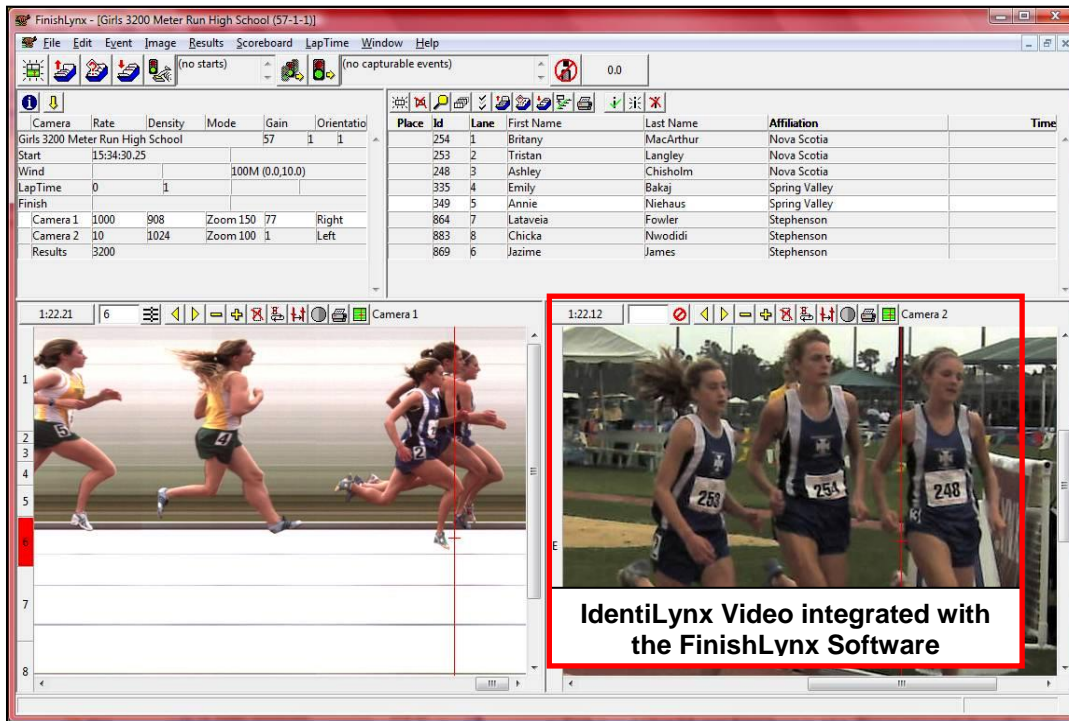


	SR	HRS
Max Resolution	1920 x 1080 @ 30fps	3264 x 1840 @ 60fps
Medium Duty Tripod	✓	✓
10' Network Cable with RJ45 Connectors	✓	✓
100' CAT6 with Weatherproof Hood	✓	✓
Power-over-Ethernet Module	✓	✓
Heavy Duty Custom Carrying Case	✓	✓

### Integration with FinishLynx Timing Software

- Remotely adjust the camera's zoom and focus within the FinishLynx software to optimize image quality.
- IdentiLynx video is automatically time-synced with the photo-finish image – clicking on a finish line capture will instantly show the corresponding front-facing video frame.
- IdentiLynx videos can be advanced and rewind frame-by-frame to ensure timers can find frames with a clear bib/hip number. Videos can also be reviewed in real time while the race is still underway.
- Overlay athlete names, times, and affiliations on the video frames from inside FinishLynx.
- IdentiLynx cameras can be used with the Automatic Capture Mode (ACM) plug-in.
- FinishLynx enables the standard EtherLynx camera features to be used with IdentiLynx cameras, including zoom, automatic scrolling, gamma, brightness, and contrast adjustment.
- IdentiLynx video images are stored on the computer as individual images and can be printed directly from the FinishLynx software, either with or without included results.
- IdentiLynx videos can be manually cropped, viewed in forward or reverse, viewed at different speeds, exported to AVI format, and uploaded to the internet if desired.

## Athlete Identification Has Never Been Easier



## Compare the IdentiLynx SR and HRS Cameras

IdentiLynx Model	Standard (SR)	High Res./Speed (HRS)
<b>Max Resolution</b>	1920 x 1080 @ 30 fps	3840 x 2160 @ 10 fps
<b>Max Frame Rate</b>	30 fps (1920 x 1080)	60 fps @ 1280 x 720
<b>Resolution 1</b>	n/a	320 x 240 @ 60 fps
<b>Resolution 2</b>	n/a	720 x 480 @ 60 fps
<b>Resolution 3</b>	n/a	800 x 600 @ 60 fps
<b>Resolution 4</b>	n/a	1280 x 720 @ 60 fps
<b>Resolution 5</b>	n/a	1280 x 960 @ 45 fps
<b>Resolution 6</b>	n/a	1920 x 640 @ 45 fps w*
<b>Resolution 7</b>	n/a	1920 x 1080 @ 30 fps
<b>Resolution 8</b>	n/a	2048 x 1536 @ 20 fps
<b>Resolution 9</b>	n/a	2304 x 768 @ 30 fps w*
<b>Resolution 10</b>	320 x 240 @ 30 fps	2592 x 1944 @ 15 fps
<b>Resolution 11</b>	720 x 480 @ 30 fps	2688 x 1520 @ 15 fps
<b>Resolution 12</b>	800 x 600 @ 30 fps	3072 x 1024 @ 20 fps w*
<b>Resolution 13</b>	1280 x 720 @ 30 fps	3264 x 1840 @ 10 fps
<b>Resolution 14</b>	1280 x 960 @ 30 fps	3840 x 1280 @ 15 fps w*
<b>Resolution 15</b>	n/a	3840 x 2160 @ 10 fps

w\* denotes wide format