



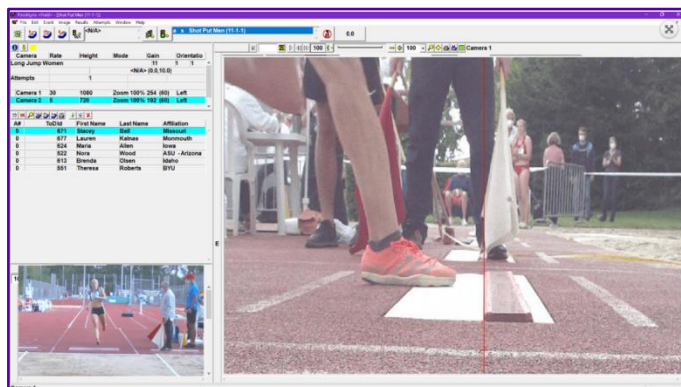
Compare the VeriLynx Camera Packages

Package Contents	BRONZE	SILVER	GOLD
2-D Full-Color VeriLynx Camera	V30 (1)	V60 (1)	V60 (1) V30 (1)
Power-Over-Ethernet	1	1	2
10' Network Cable	1	1	2
100' Network Cable	1	1	2
Ground Level Tripod	1	1	2
Heavy Duty Custom Carrying Case	1	1	2
Auto-Image Export (Powered by NCP)			1
Capture Button with USB to Serial Converter			1
Power-Over-Ethernet Switch			1

Field Event Verification Has Never Been Easier

Under World Athletics Technical Rule 30.1.1, horizontal jump take-off failures are re-defined to include any breaking of the vertical plane of the take-off line. Rule 29.5 strongly encourages judges to use video or other technology to assist the decision process. VeriLynx Field Event Verification cameras, along with special configuration of the FinishLynx software, can be used for this purpose.

The VeriLynx camera is an Ethernet-based, full-frame digital video camera that integrates with the FinishLynx software to produce time-stamped videos. FinishLynx software version 12.00 and later includes the VeriLynx profile. This profile is customized to support the use of VeriLynx cameras for video review of field events, such as the verification of take-off fouls in the Long or Triple Jump events (see image above).



The VeriLynx V30 camera captures up to **1280 x 960** pixels at **30 fps** while the VeriLynx V60 camera captures up to **1280 x 720** pixels at **60 fps**. The camera includes an auto-iris motorized lens so the zoom and focus can be adjusted remotely within the FinishLynx software. It also has a sturdy housing that protects the lens and rear connections from moisture and damage.

Set up the VeriLynx camera at your next field event and start capturing high-definition, time-stamped videos to verify each attempt.

NOTE: See below for the recommended package based on event size:

- **Bronze:** Small Local Events
- **Silver:** Regional or State-Level Events
- **Gold:** National or International Events

