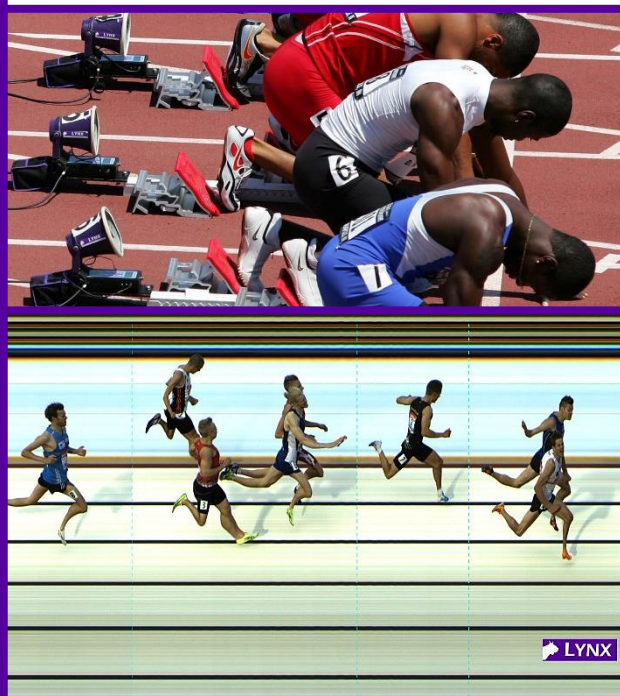


FinishLynx Photo-Finish & Fully Automatic Timing

High School Track & Field Packages



Everything You Need

- ✓ EtherLynx Vision Photo-Finish Camera
- ✓ NFHS & USATF Approved Results
- ✓ EasyAlign 2-D Video Alignment Mode
- ✓ Trusted by Thousands US High Schools

**Find the Perfect FinishLynx
Solution for Your Program**

Lynx System Developers, Inc.



Contents

Compare the Packages	3
What is Fully Automatic Timing?	4
Regulatory Approval	6
EasyAlign Video Alignment	7
Bronze Package	8
Silver Package	10
Gold Package	12
Platinum Package	14
Diamond Package	16
Scholastic Package	18
The FinishLynx Software	20
Major Reference Events	22

Compare the Packages

Package Contents	SCHOLASTIC \$5,375	BRONZE \$8,595	SILVER \$12,195	GOLD \$18,995	PLATINUM \$28,795	DIAMOND \$44,995
Number of Photo-Finish Cameras	1	1	1	1	2	2
EtherLynx Camera Model(s)	5L510	5L500 Vision	5L500 Vision	5L500 Vision	5L500 Vision	5L500 Vision
Standard Frame Rate	600	1,000	2,000	2,000	2,000 2,000	2,000 2,000
Lens	2.8 - 10mm Manual Zoom	2.8 - 10mm Manual Zoom	Motorized Zoom	Motorized Zoom	Motorized Zoom	Motorized Zoom
EasyAlign – Full-Frame Video Alignment	✓	✓	✓	✓	✓	✓
Full-Color Photo-Finish Images	✓	✓	✓	✓	✓	✓
Wired Start System	✓	✓	✓	✓	✓	✓
All necessary Ethernet & Camera Cables	✓	✓	✓	✓	✓	✓
Water-Resistant Housing	✓	✓	✓	✓	✓	✓
Power-Over-Ethernet Injector	✓	✓	✓	✓*	✓*	✓*
Custom FinishLynx Carrying Case	✓	✓	✓	✓	✓	✓
LynxPad Meet Management Software	✓	✓	✓	✓	✓	✓
Tech Support & 1-Year Renewable Warranty	✓	✓	✓	✓	✓	✓
Camera Tripods & Mounting Hardware	✓	✓	✓	✓	✓	✓
FinishLynx Software	LITE	FULL	FULL	FULL	FULL	FULL
Support for RadioLynx Wireless Start	✓	✓	✓	✓	✓	✓
Internal On-Board Level	✓	✓	✓	✓	✓✓	✓✓✓
Support for Lynx Software Plug-Ins		✓	✓	✓	✓	✓
Support for Multiple FinishLynx Cameras		✓	✓	✓	✓	✓
Support for IdentiLynx 2-D Video Camera		✓	✓	✓	✓	✓
Serial Scoreboard Interface for Display of Running Time & Results		✓	✓	✓	✓	✓
Wind Gauge Interface for Automatic Wind Reading Data Import		✓	✓	✓	✓	✓
Auto Capture & Virtual Photoeye Plug-in			✓	✓	✓	✓
High Resolution (2,000 fps) Images			✓	✓	✓	✓
Remote Positioner (Remote Camera Adjustment)			✓	✓	✓✓	✓✓✓
Motorized Lens (Remote Lens Adjustment)			✓	✓	✓✓	✓✓✓
IdentiLynx Full-Frame Video Camera				✓	✓	✓
Internal RadioLynx Wireless Start System				✓	✓	✓
*Power-Over-Ethernet Network Switch				✓	✓	✓
Display				9-Digit LED	Portable LED Display	Infield Video Display
Video Display Module (VDM)					✓	✓✓✓
LuxBoost Low-Light Capture						✓✓✓
Internal Camera Battery						✓✓✓
Weather-Proof Wind Gauge						✓



Fully Automatic Timing

Your 1 - 2 - 3 Guide to Fully Automatic Timing

What is Fully Automatic Timing?

Fully Automatic Timing – or FAT – is the standard required today by every regulatory body in Track & Field. In general, the requirements of an approved FAT system include:

- 1 The timing must be started automatically by the signal from the starting apparatus (like a starter pistol in Track and Field)
- 2 The system must be capable of producing printed images showing the times
- 3 It must be capable of timing to a precision of at least 1/100th second

FAT is mandated for record ratification at all levels, from World Athletics to the National Federation of High Schools (NFHS).

If, *and only if*, a timing system meets all of these requirements, can it be used to sanction meet results for new state, national, and international records.

Are FAT Systems Complicated?

Absolutely not – There are three main components to a basic digital line-scan FAT system:



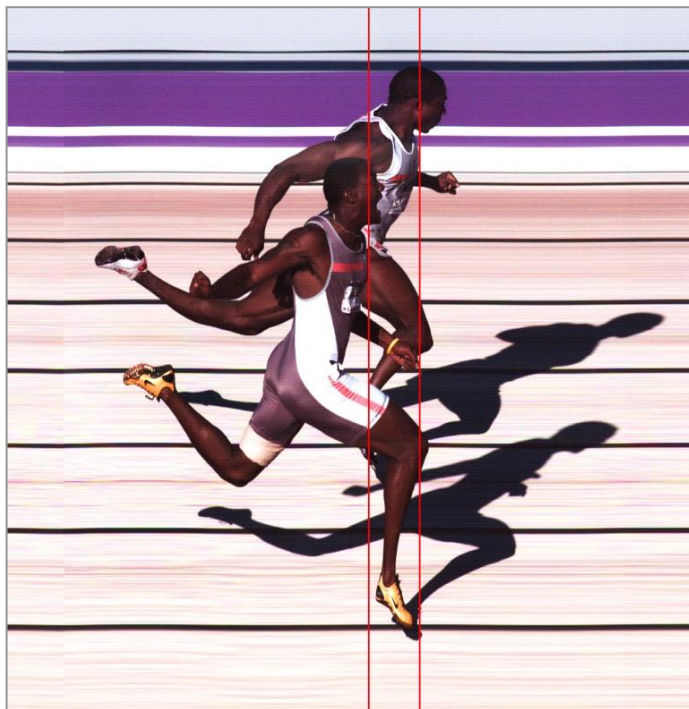
Photo-Finish Camera – A photo-finish camera aimed at the finish line captures 1,000 fps for accurate, time-stamped results images approved by the NFHS.



FinishLynx Software – Powerful timing and results software captures photo-finish results and integrates hardware like scoreboards, wind gauges, and additional cameras.



Start Sensor – An integrated start sensor detects the start signal and instantly relays it to FinishLynx for accurate Fully Automatic Timing and results.



How Accurate is a FAT System?

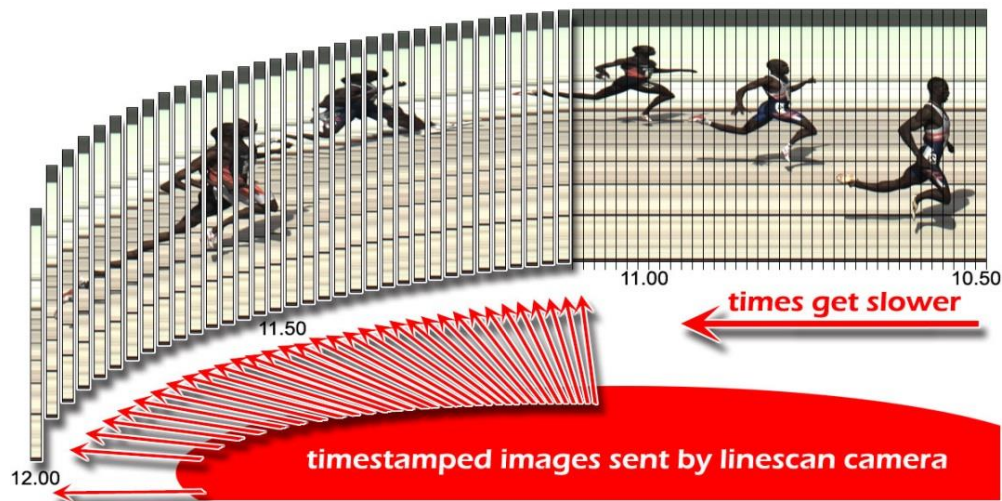
FinishLynx timing systems can capture anywhere from 600 frames per second (fps) up to an astounding 20,000 fps. That's why FinishLynx is trusted by world-class events like NASCAR and the Tour de France. In fact, FinishLynx cameras have an internal digital clock that is accurate to plus-or-minus one part per million.



What Are Line-Scan Images?

One way to think of line-scan photography is to imagine sitting in a room with the door open a tiny crack and watching someone from outside run past the door. As they run by, you only ever see a thin "slice" of them through the door. But, after a short period of time, they will travel completely past the doorway. Now imagine that the crack in your door is aligned perfectly with the finish line.

A line-scan photo-finish image is actually composed of a series of incredibly thin individual pictures of a finish line (and whatever is crossing it). Then, each vertical finish line image is combined one after the other to create a full image. See the diagram for an example.



The FinishLynx software combines these thin, time-stamped images side-by-side so it becomes very easy for the timer to see exactly when each competitor crosses the finish line. Simply click the mouse on a competitor's torso and the software displays their finish time automatically down to 1/1000th of a second.

What Other Features Are Available?

1 Quick and Easy Hardware Setup

- Unlike any other FAT system, the FinishLynx software can use a Remote Positioner to adjust the camera placement and align it perfectly on the finish line every time.
- Thanks to RadioLynx Wireless Start Technology (included with the higher-end packages), the days of stringing cables to each of the start locations are a thing of the past.

2 Data Sharing

- All Lynx systems (Bronze and above) have the ability to link to scoreboards and meet management software for instant and error-free sharing of data (results, names, affiliations, etc.).

3 High-Quality Photo Printing

- The photo-finish image printouts produced by a FinishLynx FAT system meet all the requirements for record authorization at all levels of the sport.

Why Choose a Lynx Package?

Improved Meet Results

- 1 **Fairness** – Coaches and athletes quickly learn that results are accurate and reviewable, putting an end to unnecessary disputes.
- 2 **Timeliness** – Meets will start and end on time because there won't be confusion over lanes and finish times at the end of every race.
- 3 **Accuracy** – Athletes won't be denied recognition for their achievements.

Improved Financial Results

- 1 **Make better use of limited resources** – No need to find hand timers for every lane.
- 2 **Save on costs** – No need to pay a costly timing service to provide FAT at each local meet.
- 3 **Raise money for the program** – High-quality image printouts can be sold as souvenirs.



Complete NFHS & USATF Compliance

NFHS Specifications and Compliance

Page 16

Timers

Rule 3-8

cannot be determined by the other judges acting in the manner described in the foregoing section.

ART. 4 . . . The decision of the judges shall be final and without appeal except for possible action taken by the head finish judge, referee or the jury of appeals, whoever is so designated as the final board of appeals. The games committee may authorize official pictures of the finish to assist in the final decision.

ART. 5 . . . Proper procedure dictates that judges concentrate on the runners until they are all within 10 meters of the finish line. They should then watch the finish line. In races 400 meters or longer, it is considered good practice for one judge to select the first runner to finish, another judge to select the first and second to finish, another judge to select the second and third, another the third and fourth, etc.

ART. 6 . . . At the conclusion of a race, the head finish judge shall certify the order in which the competitors finish.

ART 7 . . . When fully automatic timing is used, there shall be two appointed officials whose duties shall be to operate the automatic timing system being used for competition, and to evaluate finish line pictures.

- a) **The timing device operator** shall be responsible for the operation of the finish timing device.
- b) **The chief finish evaluator** shall be responsible for evaluation and interpretation of the official picture of the finish and determining the finish places and times.

NOTE: When official pictures from the fully automatic timing device are not available, those from another system, authorized by the games committee prior to the start of competition, may be used to verify the results reported to the judges at the finish.

SECTION 8 TIMERS

ART. 1 . . . The head timer shall have general jurisdiction over the assistant timers. Each track event shall be timed by the head timer, two assistant timers and one substitute timer. The time recorded by the substitute shall be used only when one of the three regular timers fails to record the time of the event. The head timer shall designate one of the assistant timers to announce the lap times in distance races.

ART. 2 . . . When a record is involved, the times registered by each watch shall be checked by the head timer and the referee. (See 10-4-2 Note and 10-4-3)

ART. 3 . . . The official time of a race starts with the flash from a pistol. If two watches agree and the third disagrees, the time indicated by the two is considered the official time. If all watches disagree, the time indicated by the watch showing the middle time is official. When only two watches record a winning time, the slower time shall be recorded. When a

Rule 3-9

Field Judges

Page 17

watch is stopped with the second hand between calibrations, the calibration indicating the slower time shall be used for the reading.

ART. 4 . . . Immediately after the finish of the race, timers must present their watches to the head timer, who will record the official time.

ART. 5 . . . Time pieces must be calibrated so that at least one-tenth (1/10) of a second is measurable. Electric or digital timers which measure one one-hundredths (1/100) of a second may be used. **However, unless** it is a fully automatic system, times registered in one one-hundredth of a second **must be rounded off to the next tenth** of a second. (Example: 10.42 will be recorded as 10.5 unless fully automatic electronic timing is used.)

ART. 6 . . . In fully automatic timing, F.A.T., the equipment must be started automatically by the discharge of the starter's gun or similar device, and it must record the finish time automatically when any part of the competitor's body or torso (as distinguished from the head, neck, arms, hands, legs or feet) reaches the perpendicular plane of the nearer edge of the finish line.

NOTE: A timing device which operates automatically at either the start or the finish, but not both, shall not qualify as fully automatic time (F.A.T.). Such devices shall be considered to produce manual times.

ART. 7 . . . When fully automatic timing is used, time will be recorded in one one-hundredths (1/100) of a second.

SECTION 9 FIELD JUDGES

ART. 1 . . . The head field judge shall have jurisdiction over all judges in the field events, and shall measure, weigh and inspect the implements and apparatus; check records; see that the field events start on time and continue without delay. The head field judge is also responsible for checking and certifying event cards for all field events before the cards are given to the scorer, and shall report any irregularity to the referee for a final decision.

ART. 2 . . . The event judge may change the order of competition in the preliminaries to accommodate those who may be excused to participate in other events. The event judge may choose to permit a competitor to take preliminary trials in succession. They shall also check and enforce uniform, visible apparel and shoe regulations.

ART. 3 . . . Event judges shall be responsible for the judging and measuring of each legal trial of a competitor in all field events. They shall sign the event card, indicating the place winners of each event. Their decisions, approved by the head field judge, shall be final and without appeal except for possible action taken by the referee or by the jury of appeals, whoever is so designated as the final board of appeals.

Lynx systems meet all the timing and results requirements described in the NFHS rulebook, and our line-scan technology has long been used at NFHS and USATF championship events. Lynx systems provide digital fully automatic timing (FAT) and photo-finish results accurate to at least 1/1000th of a second and fully coordinate start, finish, and meet management systems into a single network.

Lynx is trusted by elite-level meet administrators, dozens of professional timing companies, and thousands of high schools across the United States – making it the benchmark for fully automatic timing in High School Track & Field.



Edward Evansen
Lynx System Developers Inc.

Dear Ed—

This note is to once again send our appreciation of your efforts around the inaugural Nike Team Nationals. The system your staff created was one of the highlights that made NTN "the event of 2004—including the Olympics," according Craig Masback, CEO of USA Track & Field.

We were not only enormously pleased with the final product, but the service Lynx System Developers provided throughout the entire development cycle was outstanding.

We look forward to working with Lynx on future Nike Team Nationals as well as any other timing projects/challenges we come up with.

Regards,


Josh Rowe
Nike, Inc.



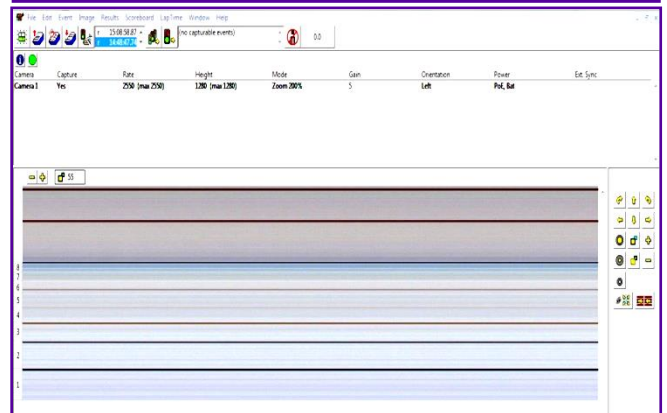
EasyAlign Video Alignment Mode

What is EasyAlign Mode for FinishLynx?

The EtherLynx Vision has quickly become the most popular FinishLynx camera that offers several advanced features, including **EasyAlign** full-frame video alignment mode. EasyAlign displays a live, full-frame video preview of the camera's field-of-view on your computer screen. The 2-D preview also overlays two thin lines (vertical and horizontal) so the camera can be adjusted visually to ensure precise alignment on the finish line. Once aligned, just switch the camera back to 1-D capture mode for accurate, photo-finish results images.

In the past, EtherLynx line-scan cameras had to be aligned using 1-D mode, meaning that operators had to rely on the colors and lane lines in the image to determine proper angles and alignment. This 2-D video mode makes it extremely simple to align the camera quickly and accurately on the finish line.

Proper Camera Alignment in 1-D Mode



Proper Camera Alignment in EasyAlign Full-Frame Video Mode

EasyAlign gives operators a clear, full-frame, live video view of the finish line area allowing the operator to align the camera quickly and accurately.

Position the camera, align it precisely on the finish line, and then switch to full line-scan photo-finish mode.

EasyAlign Mode



Bronze Package

Capture NFHS-Approved Results



The FinishLynx **Bronze Package** is an all-inclusive photo-finish system from Lynx – the leader in Fully Automatic Timing (FAT). With this entry-level timing system, all you need is a laptop to deliver NFHS-compliant results at your Track and Field events.

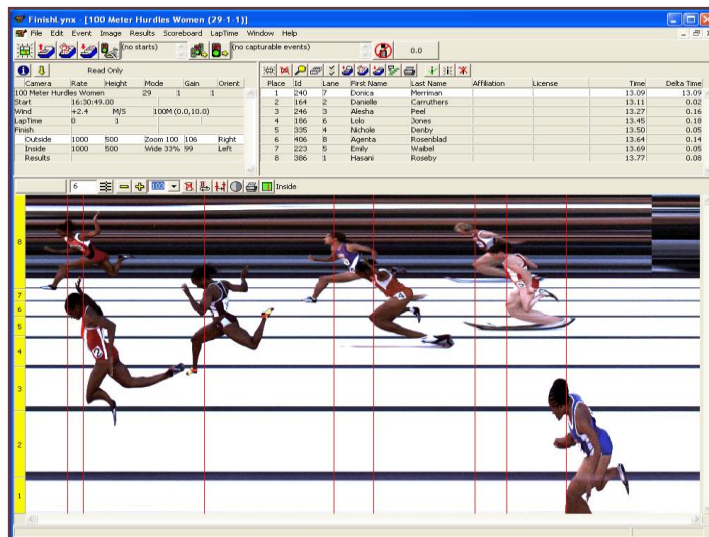
When a program makes the switch to Fully Automatic Timing, everyone involved will benefit: Athletes, Coaches, and Meet Administrators. With FinishLynx, volunteers can be used much more efficiently, resulting in less stress on both officials and volunteers. Hand-timers and stopwatches become completely unnecessary. Also, thanks to our LynxPad software, athlete entries, seed marks, and printing results can be set up with ease.

Administrators and coaches will love the fact that race images are reviewable and accurate to 1/1000th of a second. Disputes over close finishes and athlete ID's will become a thing of the past.

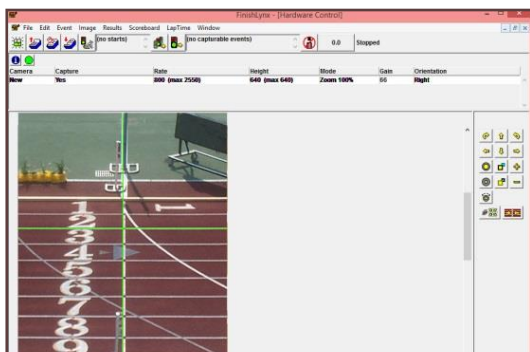
Components

- **EtherLynx Vision™ Camera:** 1,000 frames/second, full-color images, timer-enabled, fully upgradeable
 - EasyAlign™ Full-Frame Video Alignment Mode
 - CS-Mount P-Iris, 2.8-10mm manual zoom lens
 - Internal On-Board Level
- Wired Start System & Capture Button
- Tripod and mounting hardware for precision adjustment
- All-inclusive power, Ethernet, & start cable set
- Full access to Lynx Technical Support
- 1-Year renewable warranty
- **FinishLynx32** – Photo-Finish Software
- **LynxPad** – Event Management Software

Bronze Package: \$8,595



Why Choose the FinishLynx Bronze Package?



EasyAlign Full-Frame Camera Alignment

This NFHS-approved photo-finish timing system is a perfect package for first-time FinishLynx users. At the heart of the system is the **EtherLynx Vision** photo-finish camera, a powerful timing camera that captures results images at 1,000 frames per second (fps) and offers **EasyAlign** for quick alignment on the finish line to ensure accurate results. The **Internal On-Board Level** adds an electronic level inside your Vision camera, allowing you to monitor the camera's level and orientation directly from the FinishLynx software.

The combination of the Vision camera with FinishLynx Software generates a powerful track timing system for athletics programs of any size. Thousands of US high schools already trust their timing to FinishLynx, and with this beginner package, you too can enjoy the benefits of fully automatic timing.

Making the Switch to Photo-Finish Timing

Part of what makes FinishLynx systems so popular is the suite of features available in the FinishLynx timing software. The software is included in the **Bronze Package**, and it allows users to customize their system by supporting key features, plug-ins, and the ability to integrate with 3rd-party devices.

The FinishLynx software can work with every available FinishLynx plug-in, including Automatic Capture Mode (ACM) and RadioLynx Wireless Start. It also includes native support for multiple EtherLynx cameras, along with IdentiLynx 2-D video integration. It can also interface with compatible scoreboard displays and wind gauges. These capabilities are some of the major reasons why many new FinishLynx users insist on the **Bronze Package**.

The modular design of Lynx packages ensures that the **Bronze Package** contains everything needed for powerful FAT results. And, like all FinishLynx Packages, it works seamlessly with LynxPad and other meet management software. If your race or timing needs evolve over time, upgrading your system is as simple as adding new components to the existing package – nothing bought will ever go to waste.



Bronze Package Hardware

- EtherLynx Vision photo-finish camera
 - 1,000 fps – accurate to 1/1000th of a second
 - Full-color results images
 - EasyAlign full-frame camera alignment
 - Internal On-Board Level
- Wired start system
- Manual capture button
- Custom Lynx carrying case
- Tripod, mounting kit & all required cables

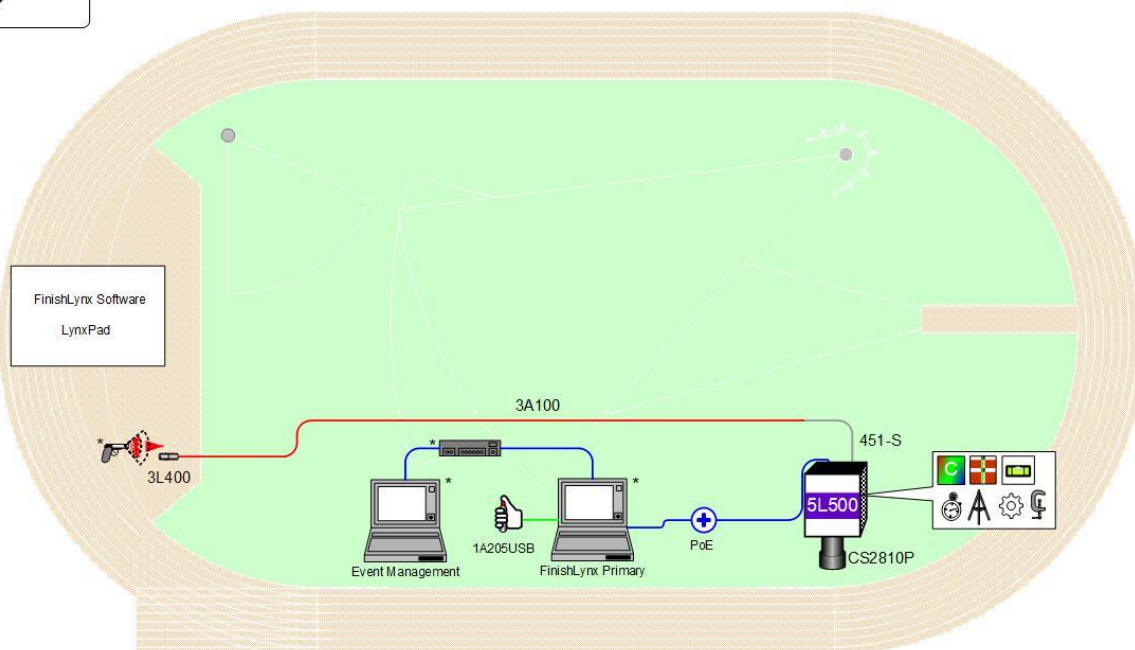
Included Software

- **FinishLynx** – Timing & results software with lifetime updates
- **LynxPad** – Meet management software

Service & Support

- 1-Year Renewable Warranty
- Full access to in-house Tech Support

Bronze - Track



* Computers, Hub, network cable, and starting pistol not included in package

© 1992 – 2025 | Lynx System Developers, Inc. | www.finishlynx.com



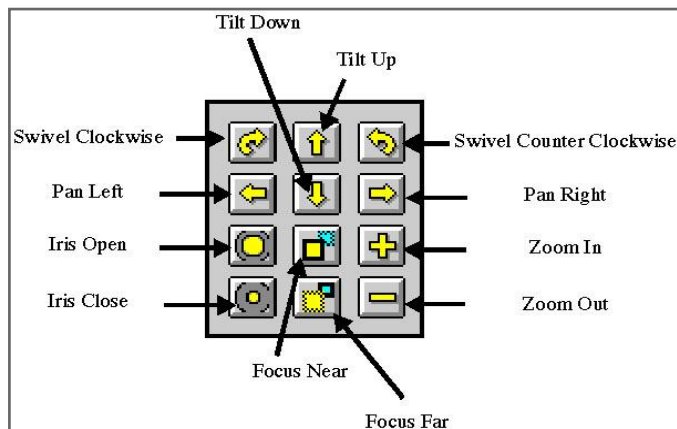
Silver Package

Better Images & Camera Control

The **Silver Package** is the most popular FinishLynx system configuration because it offers increased image quality and dramatically improved ease-of-use for camera operators. Capturing photo-finish images at up to 2,000 frames per second means higher resolution images with greater time precision. This makes it easier for timers to quickly and accurately evaluate results, then move on to the next heat.

The **Remote Lens** and **Remote Positioner** upgrades allow timers to precisely adjust the position of the camera and lens settings directly from within the FinishLynx software. Need to fine-tune the camera alignment or lens aperture and focus during the meet? Just a few clicks in the software are required to remotely adjust the lens/camera to get clear pictures and accurate results.

Combining these remote features with the **Automatic Capture Mode** plug-in makes timing meets of any size a breeze. Just arm the event, turn on capture, and record any finish line activity automatically.



Components

- **EtherLynx Vision Camera:** 2,000 frames/second, timer-enabled, fully upgradeable
 - **High-Resolution Upgrade for 2,000 fps capture**
 - **C-Mount f1.2, 8-48mm motorized zoom lens**
 - EasyAlign™ Full-Frame Video Alignment Mode
 - Internal On-Board Level
- **Remote Lens:** control *Focus, Zoom, Iris*
- **Remote Positioner:** control *Pan, Tilt, Swivel*
- **Automatic Capture Mode (ACM) Plug-In**
- Wired Start System & Capture Button
- Tripod and mounting hardware for precision adjustment
- All-inclusive Power, Ethernet, & Start Cable Set
- Full access to Lynx Technical Support
- 1-Year renewable warranty
- **FinishLynx32** – Photo-Finish Software
- **LynxPad** – Event Management Software

Silver Package: \$12,195

Remote Lens & Remote Positioner Included



Simplify Your Race Timing with Remote Control & Automatic Capture



Since finish line cameras are often mounted well above eye-level, the **Remote Lens** and **Remote Positioner** upgrades ensure the camera is easily accessible and adjustable. These motorized accessories allow operators to make mid-meet adjustments quickly and easily to account for changes in glare, shadows, or camera positioning. A simple click on the remote icons will adjust the lens or field-of-view without having to climb a ladder to reach the camera.

With high-resolution images, athlete identification becomes all the more certain. Even the best hip numbers can fall off or be obscured during races. In such situations, the next best thing is the ability to make a quick and accurate assessment of an athlete's identity based on their uniform or other identifiable features — all of which are easily visible at up to 2,000 frames/second.

Certified FAT Results with the Silver Package

Automatic Capture Mode Plug-In

The Automatic Capture Mode (ACM) plug-in for FinishLynx enables the software to detect and record all finish line activity **automatically**. Operators no longer need to use the Capture Button to record photo-finish images. The ACM plug-in will also allow the camera to be used as a “virtual photo-eye” that can control displays at the venue – stopping the running time clock for splits and unofficial finish times.

Lynx packages provide all the FAT accessories needed to produce clear, accurate results at meets of any size. With FAT results that are precise to within 1/1000th of a second, the **Silver Package** satisfies the NFHS rule:

“...all ties for place finishes and/or determining qualifiers for a subsequent round shall be broken by using timing to one one-thousandths of a second if the system allows” (NFHS.org)

Why Upgrade to Silver?

Includes everything from the **Bronze Package**

PLUS

- Remote Lens
- Remote Positioner
- High-Resolution Upgrade
- Auto-Capture Mode (ACM) Plug-In

“I love, love, LOVE the Auto Capture of FinishLynx. Makes my timing a breeze.”

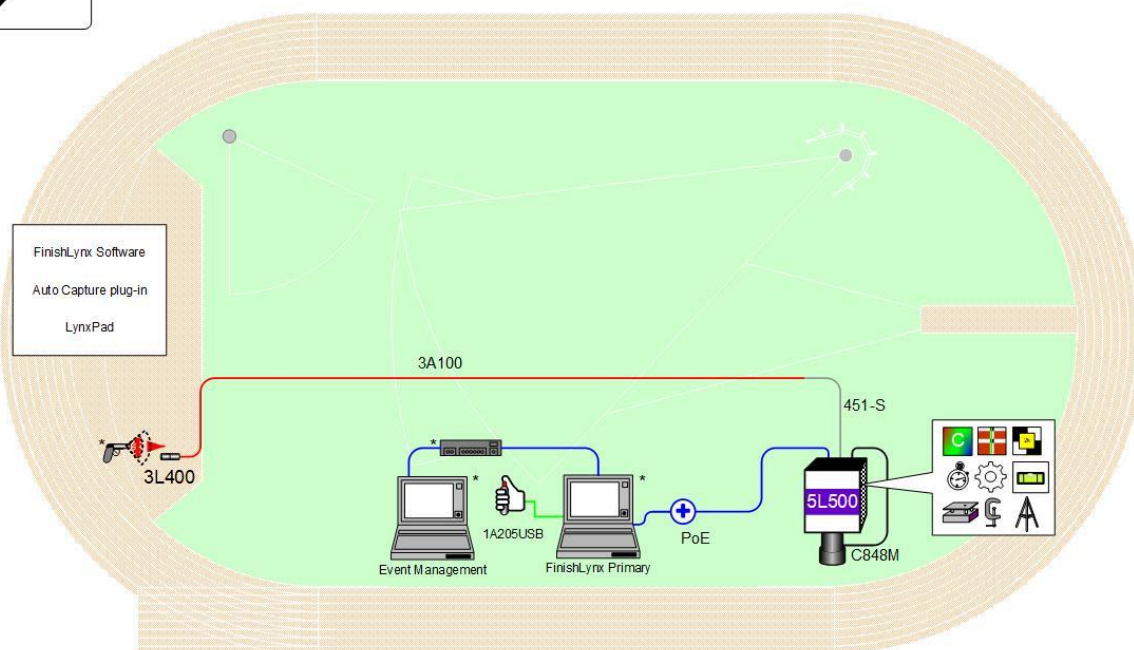
– Peter U.

“Once we got [ACM] we have never missed a finish. It makes completing the results faster also.”

– Kevin J.



Silver - Track



* Computers, Hub, network cable, and starting pistol not included in package

Gold Package

Increase Meet Quality & Mobility



The **Gold Package** contains all of the components from the Silver Package, along with several key features that allow operators to build a more advanced results network.

The **IdentiLynx Full-Frame Video Camera** is an Ethernet-based digital video camera that combines with an EtherLynx line-scan camera to enhance the 1-D photo-finish images with integrated full-frame video.

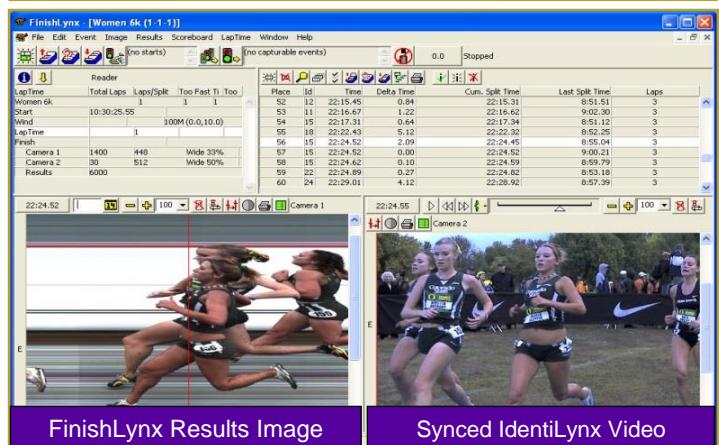
The **9-Digit LED Display** connects to the FinishLynx system and can display running times and results that are clearly visible from over 200 feet away. The ACM plug-in will also send unofficial finish times immediately to the display for all to see.

RadioLynx Wireless Start is a customer-favorite because it replaces the 500' start cable and allows Starters to move more freely about the venue.

Components

- **EtherLynx Vision Camera** – 2,000 frames/second, timer-enabled, fully upgradeable
 - C-Mount f1.2, 8-48mm motorized zoom lens
 - Internal On-Board Level
- **IdentiLynx Video Camera** (with lens, tripod, & cables)
- **Internal RadioLynx Wireless Start System**
- **9-Digit LED Display** (with bag & charger)
- **Wired Start System & Capture Button**
- **Tripod and mounting hardware for precision adjustment**
- **All-inclusive power, Ethernet, & start cable set**
- **8-Port 10/100 Power-over-Ethernet Switch**
- **Lynx Tech Support & 1-Year renewable warranty**
- **Remote Lens & Remote Camera Positioner**
- **FinishLynx32** – Photo-Finish Software
 - Auto-Capture & Virtual Photo-Eye Plug-In
 - **RadioLynx Plug-In**
- **LynxPad** – Event Management Software

Gold Package: \$18,995



Features and Benefits of the Gold Package

The **Gold Package** includes all the key components from the Silver Package (Auto-Capture, high-resolution images, remote features), plus **IdentiLynx Full-Frame Video**, a **9-Digit LED Display**, and **Internal RadioLynx Wireless Start**.

If your program hosts Track or Cross Country meets throughout the year, the **Gold Package** is right for you. It offers everything needed to host events at the highest levels of state and national competition. FinishLynx Fully Automatic Timing technology is trusted by thousands of high schools across the country.



FAT Results with the Lynx Gold Package

The **Gold Package** includes **IdentiLynx**, an Ethernet-based digital video camera that works alongside the line-scan camera to enhance photo-finish images with 2-D video. Because IdentiLynx is time-synchronized with the FinishLynx capture, you can click anywhere on the image to see head-on video from precisely the same moment, allowing for easy athlete identification using bib numbers or uniforms.

The more hardware that gets included, the more powerful and sophisticated the results network becomes. One of the key benefits of FinishLynx technology is that individual components can work together to produce a more complete results network, improving meet quality for administrators and athletes alike.

With the IdentiLynx video camera, Internal RadioLynx Wireless Start, and 9-Digit LED Display, the **Gold Package** provides one of the most powerful timing solutions available today. It is more than just a timing system – it's a real-time FAT results network tailored to your venue.

Why Upgrade to Gold?

Includes everything from the **Silver Package**

PLUS

- IdentiLynx Full-Frame Video Camera
- Internal RadioLynx Wireless Start
- 9-Digit LED Display

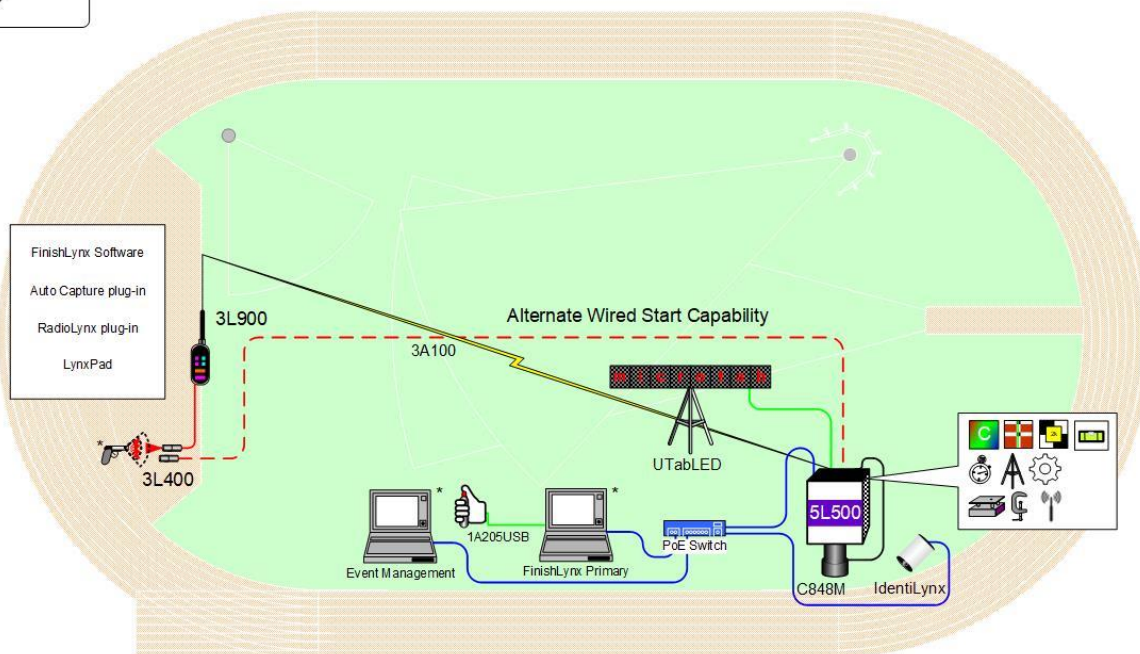
The Internal RadioLynx Wireless Start system wirelessly transmits the start signal so the officials can move freely around the venue without a 500' start cable trailing them.

The 9-Digit LED Display shows 6" letters and numerals that are visible from over 200 feet away.

The IdentiLynx Video Camera offers 2-D video that's time-synchronized with your FinishLynx results, so finishes can be viewed from a different angle. IdentiLynx makes it easy to identify athlete singlets and bib numbers during evaluation.



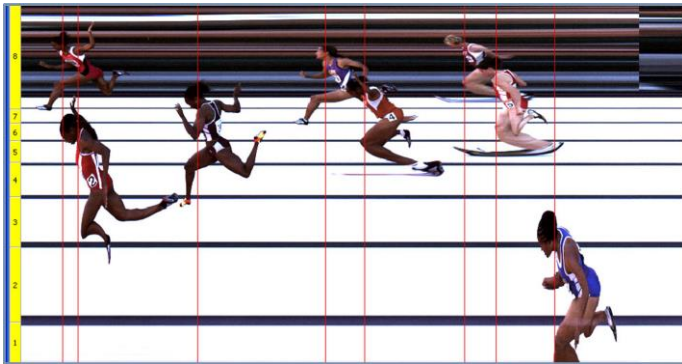
Gold - Track





Platinum Package

Platinum Package



- **Multiple-Camera Results System** – The **Platinum Package** includes two 2,000 fps EtherLynx Vision cameras as the primary and secondary capture devices. The package also includes an IdentiLynx full-frame video camera, which can produce head-on video that is time-synchronized with the photo-finish results.
- **Video Display Module (VDM)** – The Video Display Module (VDM) enables the live display of FinishLynx running time, results, and images on a video display. Simply connect a compatible video display to the Vision camera back and instantly show live results data at the finish line.
- **Portable LED Video Display** – The Lynx Portable Display is a smaller and more portable version of the 1/2/3-sided Lynx Infield Video Boards, using the same high-quality LEDs and aluminum construction. The compact design, high-resolution LED panel, and multiple mounting options make it an excellent choice for showing live results, scoreboard scripts, images, GIFs, and custom messages at your finish line.

Components

- **EtherLynx Vision (Primary)**: 2,000 fps, full-color, timer-enabled
 - Internal RadioLynx Wireless Start
 - Internal On-Board Level
- **EtherLynx Vision (Secondary)**: 2,000 fps, full-color, Internal On-Board Level
- C-Mount f1.2, 8-48mm motorized zoom lens (x2)
- IdentiLynx Video Camera (with lens, tripod, & cables)
- Wired Start System & Capture Button
- Tripod & mounting hardware for precise adjustment (x2)
- All-inclusive power, Ethernet, & Start Cable set
- Lynx Tech Support & 1-Year renewable warranty
- Remote Positioner (x2)
- **Lynx Portable Display**
- **Video Display Module (VDM)**
- 8-Port 10/100 Power-over-Ethernet Switch
- FinishLynx32 Photo-Finish Software
 - Auto-Capture & Virtual Photo-Eye (ACM) Plug-In
- LynxPad Event Management Software

Platinum Package: \$28,795

Features and Benefits of the Platinum Package

The **Platinum Package** is a three-camera results system that not only benefits athletes, but the entire program – from parents to officials. Although designed specifically for high school Track & Field, this package also meets the standards approved by the World Athletics (WA). It provides accurate, verifiable results for all track events: Indoor, Outdoor, and Cross Country.

By combining two EtherLynx Vision cameras with an IdentiLynx front-facing video camera – and integrating them with the other Platinum components – we've created one of the most powerful high school timing solutions available today.



Portable LED Display

Championship-Level Results with the Platinum Package

The **Platinum Package** delivers **three time-synchronized viewpoints from the finish line**: two line-scan cameras on opposing sides and full-frame Identilynx video capturing from the front. The 2,000 fps Vision camera serves as the primary photo-finish device, while the second 2,000 fps Vision captures reverse-angle images from the opposite perspective.

When you invest in FinishLynx technology, you're joining a community of thousands of other high schools across the country that have already made the same commitment to their track programs. Lynx technology is used at every level of competition, and is manufactured in-house by our skilled technicians. No matter how the system is used, it is reassuring to know that a Lynx support technician is only a click or phone call away.

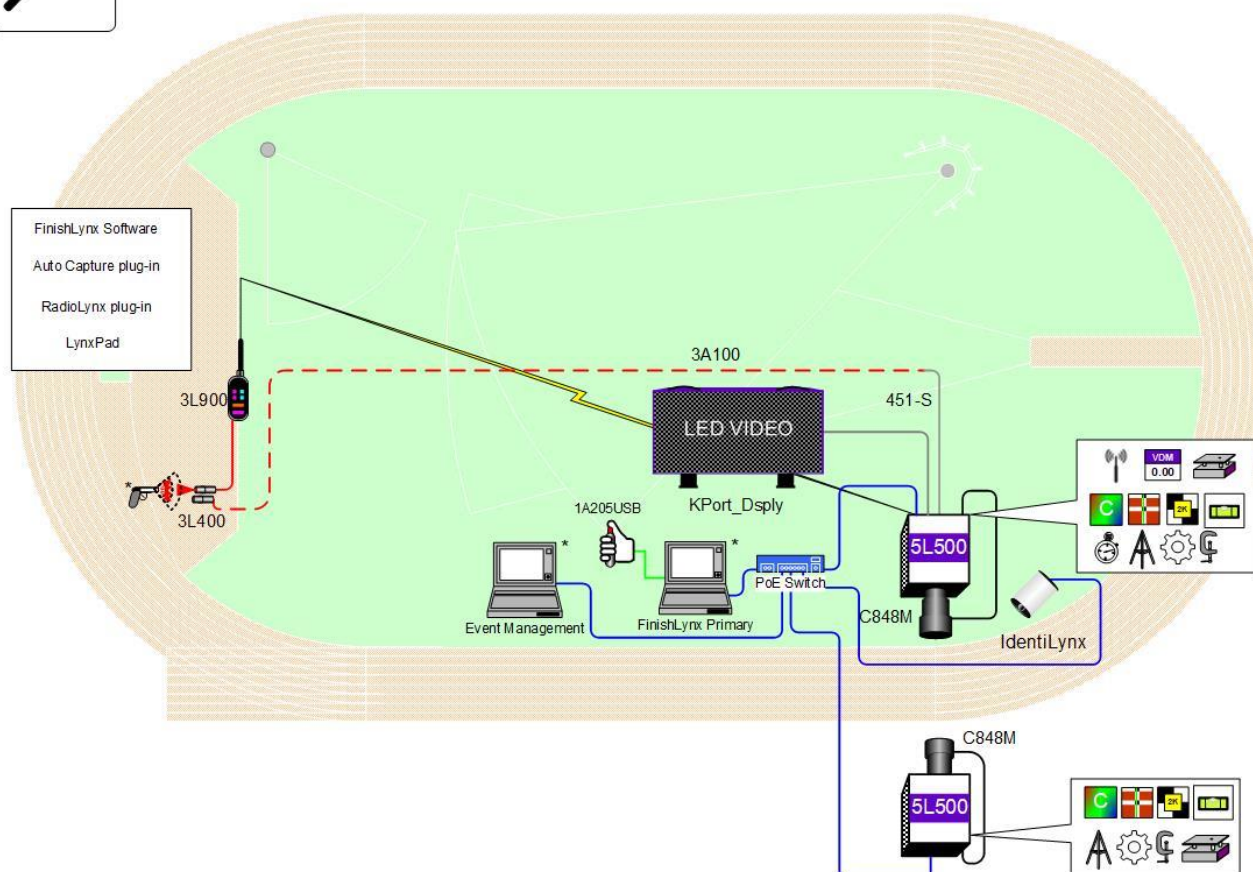
Why Choose Platinum?

Key Components

- **Primary Camera:** EtherLynx Vision 2,000 fps, Full-Color, Timer-Enabled, Internal RadioLynx, Internal On-Board Level
- **Second Camera:** EtherLynx Vision 2,000 fps, Full-Color, Internal On-Board Level
- IdentiLynx Full-Frame Video Integration
- Lynx Portable Display
- Video Display Module (VDM)



Platinum - Track



* Computers and starting pistol not included in package

© 1992 – 2025 | Lynx System Developers, Inc. | www.finishlynx.com



Diamond Package

The Most Advanced FAT Package



Diamond Package

- **LuxBoost Low-Light Capture** – Dramatically amplifies the light available for 1-D image captures. Improved light sensitivity means that the camera can capture high-quality images in very low-light conditions.
- **Infield Video Display** – Custom-designed to meet the demands of championship-level sporting events. These displays integrate seamlessly with FinishLynx to display live results throughout the venue. The video scoreboards are perfect for indoor or outdoor venues with a sturdy weather-proof design and bright LED panels.
- **Weather-Proof Wind Gauge** – Utilizes ultrasonic technology to provide accurate wind speed and direction data. The unit connects directly to an EtherLynx Camera, C- Box, SerialLynx unit, or computer serial port, allowing live wind gauge data to integrate seamlessly with FinishLynx.

Components

- **EtherLynx Vision (x2)** 2,000 fps, full-color, timer-enabled, Internal RadioLynx Receiver, **LuxBoost**, Internal battery, Internal On-Board Level
- C-Mount f1.2, 8-48mm motorized zoom lens (x2)
- IdentiLynx Video Camera (with lens, tripod, & cables)
- Internal RadioLynx Wireless Start System
- Wired Start System & Capture Button
- Tripod & mounting hardware for precise adjustment (x2)
- All-inclusive power, Ethernet, & Start Cable set
- Lynx Tech Support & 1-Year renewable warranty
- Remote Positioner (x2)
- Video Display Module (VDM) (x2)
- **Infield Video Display**
- **Weather-Proof Wind Gauge**
- 8-Port 10/100 Power-over-Ethernet Switch
- FinishLynx32 Photo-Finish Software
 - Auto-Capture & Virtual Photo-Eye (ACM) Plug-In
 - RadioLynx Plug-In
- LynxPad Event Management Software

Diamond Package: \$44,995

Features & Benefits of the Diamond Package



The **Diamond Package** builds on the components of the Platinum Package and adds premium features like the World Athletics-approved wind gauge and LuxBoost Low Light Capture. In addition, the Diamond Package swaps the Lynx Portable LED Display from the Platinum Package for the impressive 1-Sided Infield Display. Both EtherLynx cameras come equipped as Timer-Enabled with LuxBoost low-light capture mode and Internal Battery option, setting the Diamond Package apart from the rest. This three-camera timing system is the most powerful high school timing package available today.

Elite-Level Results with the Diamond Package

The **Diamond Package** includes two (2) full-color EtherLynx Vision cameras, an IdentiLynx full-frame video camera, a World Athletics-compliant wind gauge, plus everything else needed to produce results for elite-level events. Because all governing bodies, including the NFHS, state that a wind gauge must be used to ratify record-breaking times, it has become a necessity in all major Track & Field competitions. In fact, the same device was used at past US Track & Field Olympic Trials to verify the results of America's finest athletes.

The **Lynx 1-Sided LED Video Board** broadcasts live running times, finish times, athlete/event info, and custom text or images. It's also compatible with the Video Display Module (VDM), meaning the Vision cameras can connect directly to the video board via HDMI allowing timers to send live race data, and FinishLynx results images without the need for a third-party results program.

Finally, the **Ultrasonic Wind Gauge** accurately measures head/tail winds during events so record-breaking times can be recognized by the NFHS.

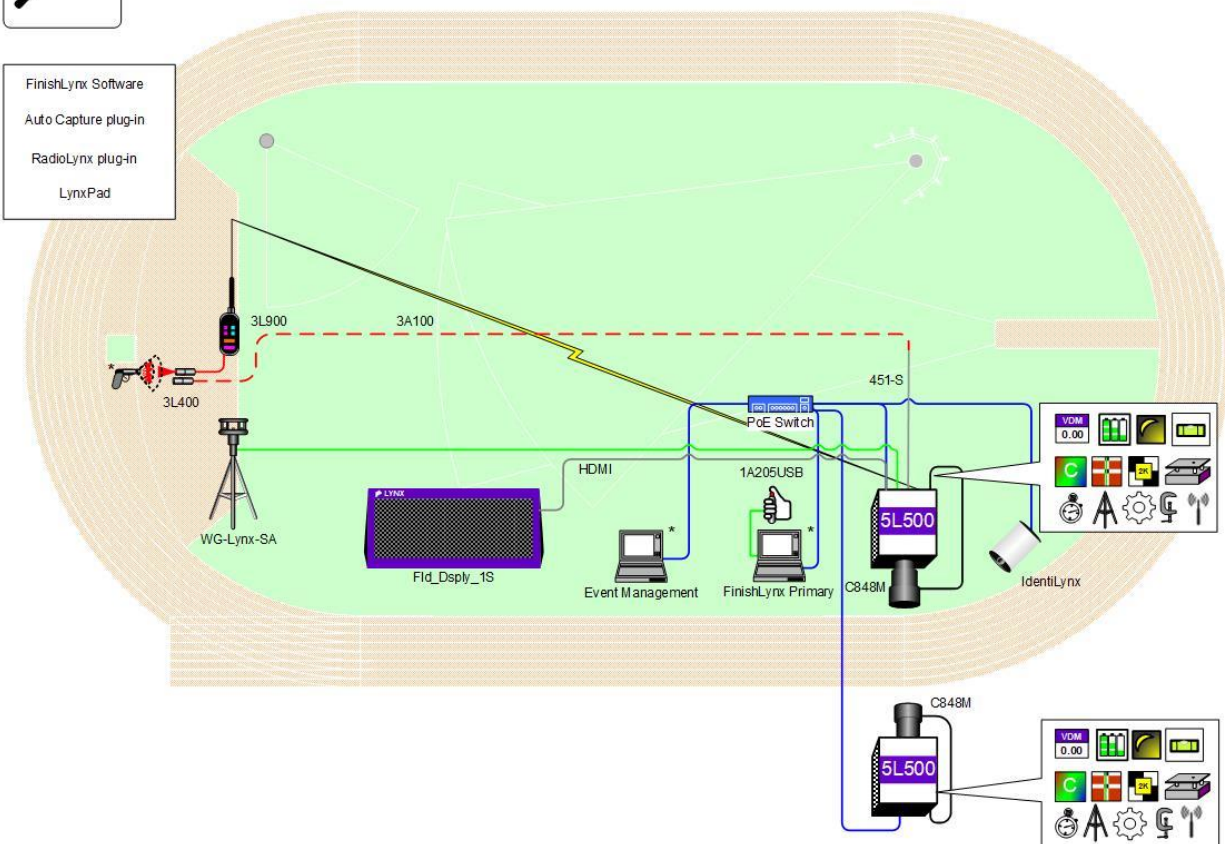
Why Choose Diamond?

Key Components

- Two Fully Equipped Cameras: EtherLynx Vision 2,000 fps, Full-Color, Timer-Enabled, Internal RadioLynx, VDM, LuxBoost, Internal Battery
- IdentiLynx Video Integration
- 1-Sided Infield Video Display
- Weather-Proof Wind Gauge
- 2x Video Display Module (VDM)



Diamond - Track



* Computers and starting pistol not included in package

© 1992 – 2025 | Lynx System Developers, Inc. | www.finishlynx.com

Get Started with a Full-Color FinishLynx Timing System

FinishLynx track and field timing systems are trusted by thousands of high schools across the country. All FinishLynx packages contain everything you need to produce NFHS-approved Fully Automatic Timing (FAT) results. The **Scholastic Package** produces photo-finish images at 600 frames per second.

*"3-9-6: When fully automatic timing (FAT) is used, timing shall be recorded in one one-hundredths of a second and all ties for place finishes and/or determining qualifiers for a subsequent round shall be broken by using timing to **one one-thousandths of a second** if the system allows"* (2009 Track & Field Rule Changes, NFHS.org).



The world's most popular photo-finish technology is available in a packaged solution for only \$5,375. The **Scholastic Package** produces more accurate results than other timing solutions, and it includes **full-color images**, **EasyAlign** camera alignment mode, all necessary cables, camera mounting hardware, LynxPad Meet Management Software, and FinishLynx Lite Results Software. The Scholastic solution offers all the benefits of FinishLynx at an unprecedented cost. With a fully automatic timing system, you will no longer have to worry about timing meets by hand, and therefore you can make better use of your volunteers. Ultimately, you will be able to put more focus on athletes rather than struggling to get results.

Scholastic Package Components

- Camera: EtherLynx Vision (Scholastic), 600 fps, 640-pixel image height, full-color, timer-enabled
- Internal On-Board Level
- EasyAlign Full-Frame Video Alignment Mode
- 2.8 - 10mm Manual Zoom Lens
- FinishLynx Lite Results Software
- Start Sensor, Capture Button, and 500' Start Cable
- 6' Mounting Tripod and Geared Head
- Quick Start Guide for easy system setup
- All-Inclusive Camera Power & Connection Cable Set
- Custom Storage/Carrying Case
- Access to Lynx Technical Support
- 1-Year Renewable Warranty
- LynxPad Meet Management Software
- Ability to add/upgrade components later

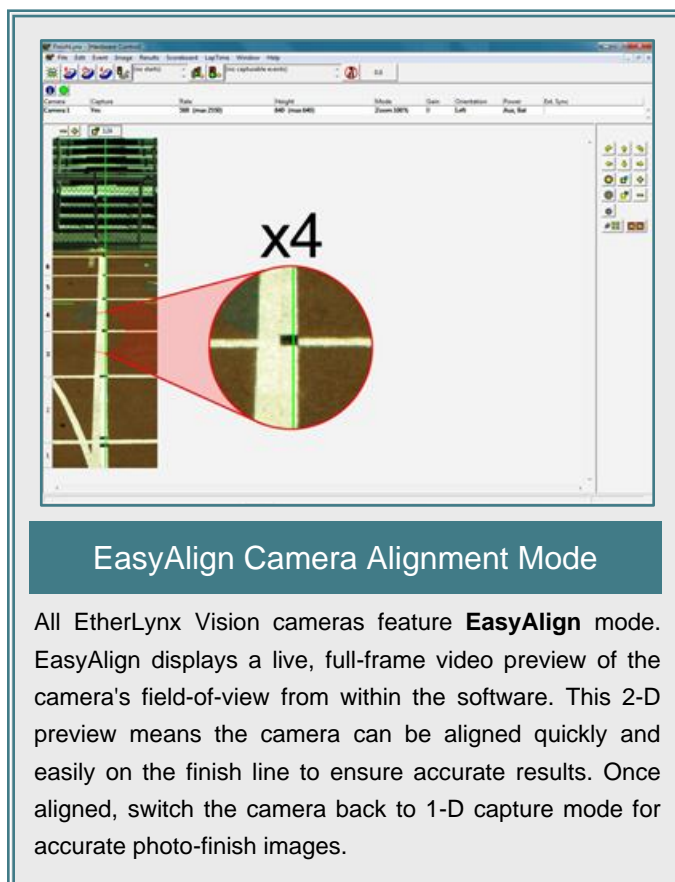


Enjoy Premium Features from the Vision Camera

The **Scholastic Package** includes **FinishLynx Lite** – a simplified version of the FinishLynx software – which still takes advantage of powerful features available with the EtherLynx Vision camera. The **Scholastic Package** provides **full-color results images** and **EasyAlign** Full-Frame Video Alignment. That means it's easier than ever to set up and capture fully automatic times at your meets.

Make an Investment in FinishLynx Technology

The **Scholastic Package** makes it even easier for schools of all sizes to adopt Fully Automatic Timing. FinishLynx packages are truly a long-term investment that will pay dividends for years to come. Say goodbye to hiring hand-timers, soliciting volunteers, and producing non-sanctioned results. More importantly, if your program grows and is looking to host bigger meets, **the system can be upgraded at any time** to work with RadioLynx Wireless Start or Remote Lens and positioning capabilities. It can also be converted to one of our more advanced packages.



Accurate and Easy to Use

Software

The **Scholastic Package** uses a simplified version of our renowned **FinishLynx** photo-finish results software. This software captures FAT results right on your laptop and is compatible with any Windows-based computer. The easy-to-use software is perfect for schools making the switch from manual or video timing to Fully Automatic Timing.

The Scholastic Package also includes **LynxPad Meet Management Software** that organizes athlete names, affiliations, lane assignments, and seed marks in a simple, file-based format. Full integration with FinishLynx means it's easy to generate complete FAT results.

Hardware

Position your camera, connect two cables, and you're ready to go!



1. Connect to Windows Computer via PoE injector

2. Connect to Wired Start System

FinishLynx Photo-Finish Results Interface

The FinishLynx software was first created over 25 years ago by Lynx engineers as the premier interface for capturing, logging, and transmitting real-time FAT results. Over the years, FinishLynx has continuously improved thanks to customer feedback and in-house software development. Today, our FinishLynx software is more powerful and versatile than ever before.

FinishLynx integrates photo-finish images, FAT results, and network hardware into a single, easy-to-use interface. From multiple FinishLynx cameras to countless third-party accessories, FinishLynx allows operators to control their entire results network from a laptop computer.

Real-Time Event Panel

The top left panel in the FinishLynx software outputs a variety of real-time information during an event. These details provided will vary in complexity depending on the hardware attached to the system.

By default, the interface displays the event name (imported from meet management program data), as well as the start time and camera details. Should you ever decide to expand your system, the software can also integrate real-time data from wind gauges, multiple cameras, and FinishLynx software plug-ins.

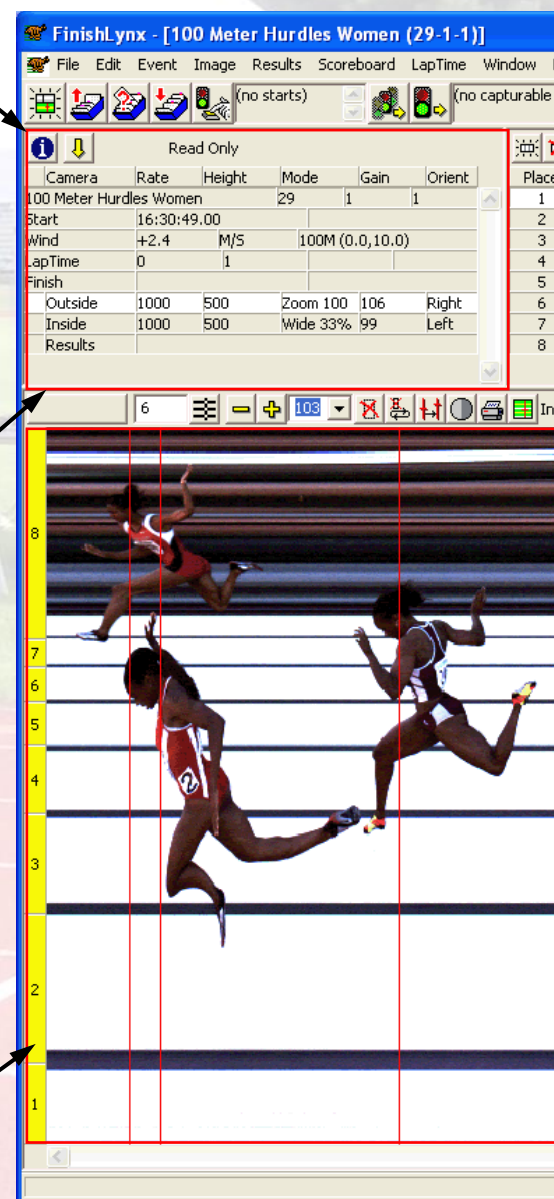
Full-Color Photo-Finish Images

Every EtherLynx Vision Camera produces full-color images utilizing millions of colors. When operators combine the accuracy of 1,000 or 2,000 frames/second images with full-color capabilities, operators have the very finest photo-finish, timing, and results production technology available.

Producing results with full-color images has never been easier. Here's how:

1. Easier athlete identification by uniform color
2. Crisp contrast/resolution for hip numbers
3. Rich color images for successful printing, laminating, and selling of images at meets

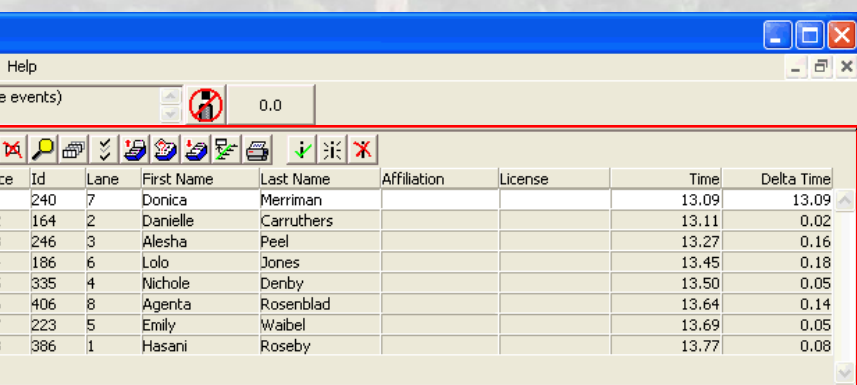
Learn About the



FinishLynx Software

FinishLynx Results Panel

The FinishLynx results panel organizes and displays all real-time athlete data during events. Easily import athlete info and lane numbers from a meet management program before a meet. When evaluating an image, results are included alongside their ID and lane numbers – combining the data and photo-finish images for the most impressive FAT results available.

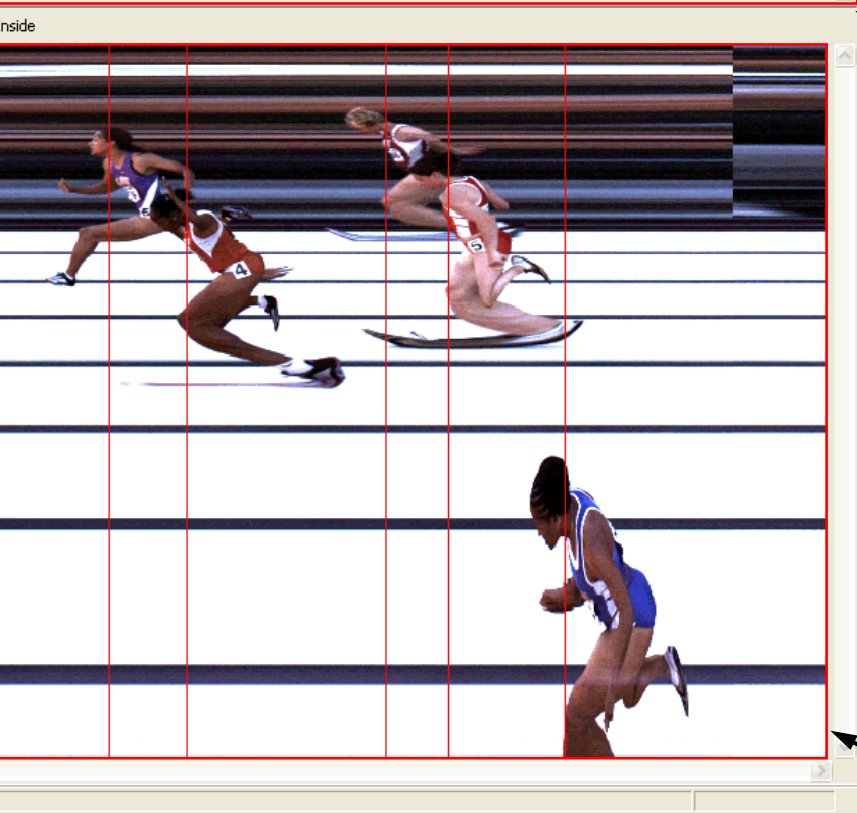


A screenshot of the FinishLynx Results Panel software interface. It features a menu bar with 'Help' and a toolbar with various icons. Below the toolbar is a table with columns: Id, Lane, First Name, Last Name, Affiliation, License, Time, and Delta Time. The table contains several rows of athlete data. A red box highlights the table area.

	Id	Lane	First Name	Last Name	Affiliation	License	Time	Delta Time
	240	7	Donica	Merriman			13.09	13.09
	164	2	Danielle	Carruthers			13.11	0.02
	246	3	Alesha	Peel			13.27	0.16
	186	6	Lolo	Jones			13.45	0.18
	335	4	Nichole	Denby			13.50	0.05
	406	8	Agentia	Rosenblad			13.64	0.14
	223	5	Emily	Waibel			13.69	0.05
	386	1	Hasani	Roseby			13.77	0.08

Meet Management Integration

LynxPad is a meet management program that organizes athlete names, ID's, schools, and seed marks in a simple, file-based format. Because LynxPad is fully integrated with FinishLynx, operators can generate complete, FAT photo-finish results with the simple click of a button.



NFHS-Approved FAT Results

FinishLynx integrates crisp photo-finish images with timing results that are accurate to within 1/1000th of a second. No matter how close the finish, operators will enjoy the advantage of easily visible (and printable) FAT results from an NFHS-approved system.

3-9-6: When [F.A.T.] is used, timing shall be recorded in one one-hundredths of a second and all ties for place finishes and/or determining qualifiers for a subsequent round shall be broken by using timing to one one-thousandths of a second if the system allows. (NFHS.org)



Major Reference Events

Major Track & Field Events Using FinishLynx Technology

USATF Outdoor Track & Field Championships (Des Moines, IA)

<https://www.usatf.org/events>

New Balance Outdoor Nationals (Philadelphia, PA)

<https://www.nbnationalsout.com/>

New Balance Indoor Nationals (New York, NY)

<https://www.nbnationalsin.com/>

Penn Relays (Philadelphia, PA)

<https://pennrelays.com/>

Drake Relays (Des Moines, IA)

http://www.runnerspace.com/eprofile.php?event_id=631

Millrose Games (New York, NY)

<https://www.millrosegames.org/>

USATF Indoor National Championships (Albuquerque, NM)

<https://www.usatf.org/events>

Nike Cross Nationals (Portland, OR)

<http://www.runnerspace.com/nxn>

Foot Locker Cross Country Championships (San Diego, CA)

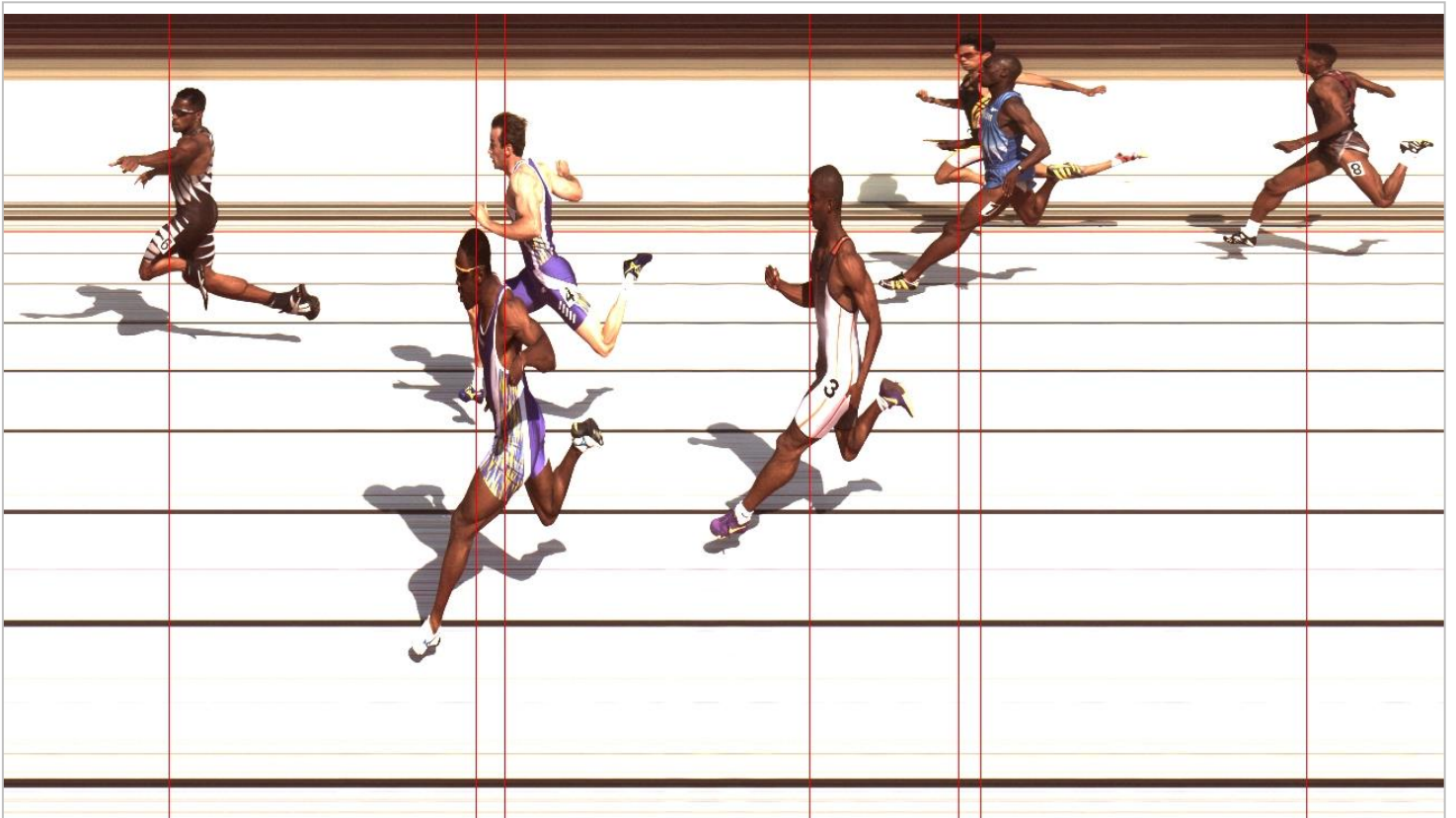
<http://www.footlockercc.com/>

Links verified 10/2024





Contact Lynx System Developers



Key Contacts

Domestic Sales	domsales@finishlynx.com
Tech Support	support@finishlynx.com
Phone	USA (978) 556-9780
Address	179 Ward Hill Ave. Haverhill, MA 01835

Connect With Us Online

Website	www.finishlynx.com
Facebook	www.facebook.com/finishlynx
Twitter	www.twitter.com/finishlynx
Instagram	www.instagram.com/finishlynx
YouTube	www.youtube.com/c/finishlynx



Contact Us Today