



Bronze Package

Bronze Package

FinishLynx photo-finish timing systems have been used at the highest levels of cycling for over 25 years and that same technology is now available for BMX racing. The BMX Bronze, Silver, and Gold packages have been designed to meet the specialized needs of BMX, Cyclocross, and Mountain Bike races. All packages include everything you need to produce UCI-certified results at races of any size, including a photo-finish camera, time-synced video camera, and customizable timing software.

The Bronze Package is a well-equipped entry-level system that integrates photo-finish images and 2-D video for accurate, real-time results. The **EtherLynx Vision** photo-finish camera produces time-stamped results images that are accurate to 1/1000th of a second. Plus, the **IdentiLynx** video camera captures front-facing finish line video for easy rider and number identification. Both cameras are also synchronized inside the software for accurate results.

The powerful **FinishLynx** software allows you to capture, verify, and print your results with a few clicks of the mouse. This camera/software combo, along with the other FAT accessories, makes the Bronze Package the most capable entry-level BMX solution available.



Components

- **Camera – EtherLynx Vision**, color, timer-enabled, 1,000 frames per second, 640 vertical pixels
 - **EasyAlign** 2-D Video Alignment Mode
 - **CS-Mount** 2.8-10mm P-Iris Zoom Lens
 - Power-Over-Ethernet
- **Video - IdentiLynx**, 30 fps, 1280x720, color, front-facing video camera for easy rider identification
 - 5-50mm f/1.3 CS-mount lens
- Super Head Clamp, Geared Mounting Head, and Tripod for precision adjustment
- All-inclusive Camera cable set with Capture Button, Ethernet Hub, and USB-to-Serial Converter
- Custom carrying case
- **LynxPad** – Event management software
- **FinishLynx** – Multi-language* photo-finish software
 - **Time Trial Plug-in** for FinishLynx

* See Website for current listing – FinishLynx available in English, Spanish, French, Arabic, German, Italian, Korean, Portuguese (Brazil), Russian, Swedish, Finnish, Chinese (Simp.), Chinese (Trad.), Japanese

Bronze Package Features

- Time-stamped images captured at 1,000 frames per second provide accurate, indisputable photo-finish results no matter how close the finish.
- IdentiLynx video time-syncs with your photo-finish images for full-color, dual-angle rider verification.
- The “building block” nature of Lynx packages means that you can add hardware and software upgrades to your existing system at any time.
- Technical support that is unparalleled in the industry.

Bronze Package Benefits

The **EtherLynx Vision** photo-finish camera captures high-speed images at up to 1,000 fps and 640 vertical pixels for results accurate to 1/1,000th of a second. This line-scan technology is ideal for BMX racing because it records the precise millisecond when the rider's tire crosses the finish line. While transponder tags have been popular in the past, they're usually fastened on the bike's fork, several inches behind the true front of the tire. As a result, the UCI rulebook states that photo-finish systems shall take priority over tags for all time trials, qualifications, and finals (6.1.024). FinishLynx can interface with transponders if necessary, but cycling officials at every level of competition will always prefer the accuracy of time-stamped photo-finish images.

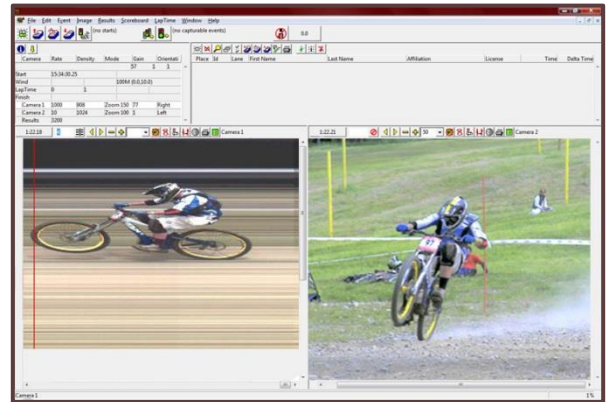


The BMX Bronze Package

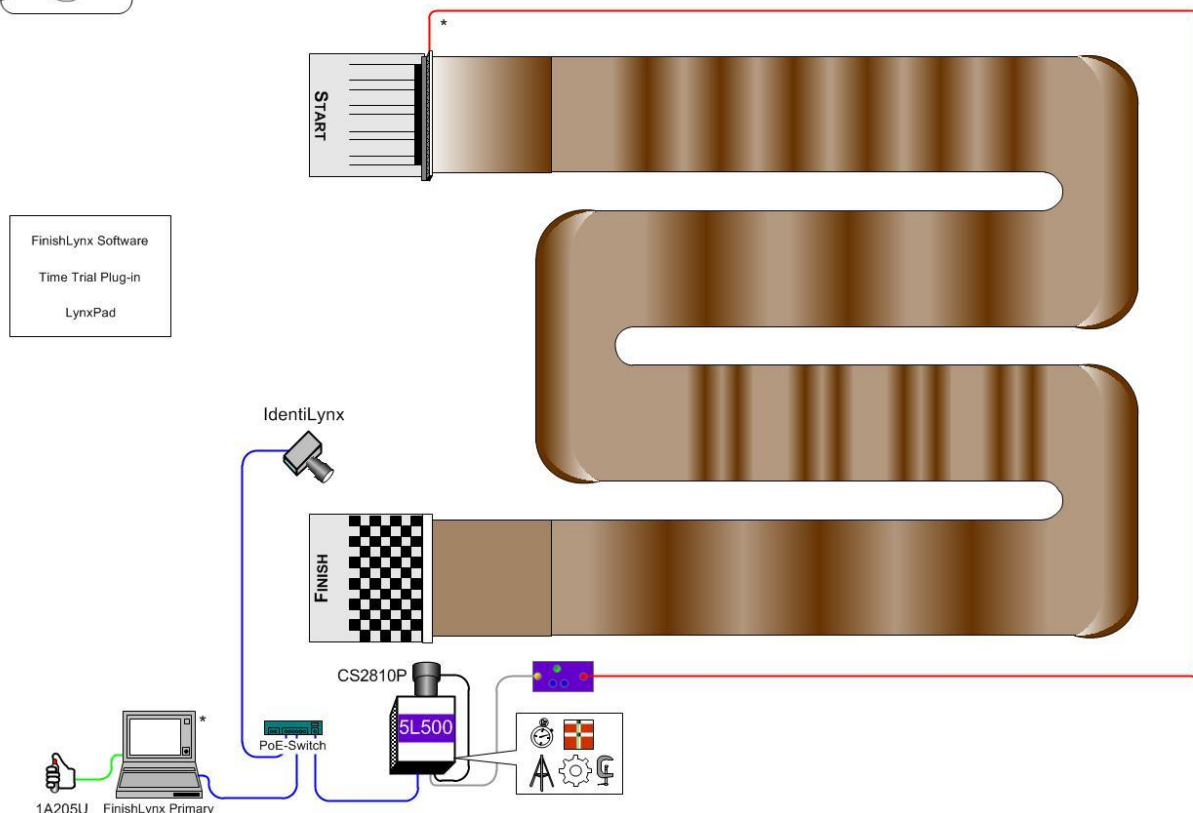
The biggest advantage of Lynx BMX packages is their seamless integration of hardware and software across a single network. FinishLynx software integrates your start signal, video capture, and photo-finish camera into one easy-to-use computer interface. Because the UCI also requires a “front on” video to help with rider identification (6.1.019), the **Bronze Package** includes the IdentiLynx full-frame video camera. This color camera records finish line videos at 30 frames per second (1280x720 pixels) and automatically time-syncs with the photo-finish images for multi-angle results.

The adjacent picture is a sample FinishLynx screenshot showing the Vision and IdentiLynx camera combination found in the Bronze Package. With these time-synced cameras, you can click on any rider and see the video frame (and precise time) when they crossed the finish line for quick identification using the number, color, or equipment. The software is not only configurable for different stages of competition, but can also interface with countless other components like transponders, LED displays, start gates, and additional cameras.

The **Bronze Package** is a simple, all-inclusive system that is easy to operate and portable enough to travel between venues. The cameras, FinishLynx software, capture button/cables, and mounting hardware all come standard. EasyAlign video alignment mode and the P-Iris zoom lens make camera setup fast and easy; and the sturdy carrying case allows for easy transportation. Plus, nothing you buy from Lynx will ever go to waste. If your needs change, you can simply add new features like software plug-ins or wireless capability. Your FinishLynx system is a long-term investment that is designed to grow with your needs.



BMX Cycling – Bronze



* Computer and starting gate not included in package

© 1992 – 2022 | Lynx System Developers, Inc. | www.finishlynx.com