



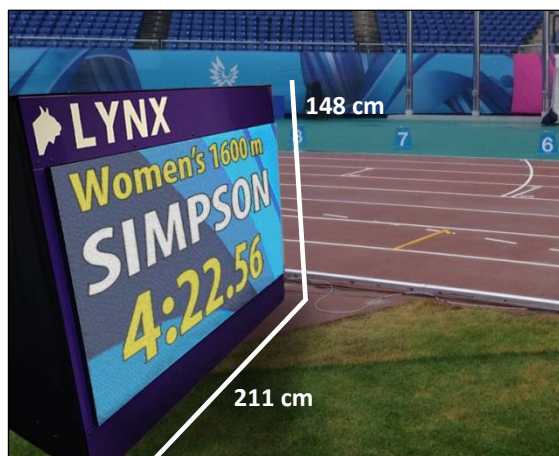
### Lynx LED Video Displays for Track & Field Results

The LED infield video displays from Lynx are custom designed to meet the demands of championship-level World Athletics events. These modular displays are available in 1, 2, or 3-sided units and integrate seamlessly with FinishLynx technology to display live results throughout the venue.

Each LED panel is **2 meters** long by **1 meter** high and provides high-visibility text, images, or animated graphics for superior fan engagement in large indoor or outdoor venues. Each display unit can receive data independently over an HDMI connection, or multiple units can be connected with an Ethernet cable to broadcast a single video/graphic feed simultaneously to displays located across the infield.

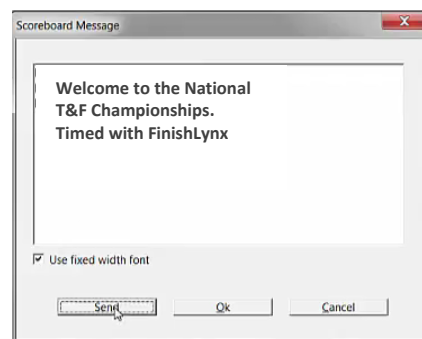
#### Software Compatibility

The displays are compatible with the ResultTV live display software, FieldLynx field event software, the Video Display Module for EtherLynx Vision cameras, or any custom software capable of outputting graphics to an HDMI-connected display. Infield displays can connect to a laptop or netbook to show live field event scores and measurements using the FieldLynx software. Finish line displays can connect to ResultTV for advanced broadcast-ready graphics, or display race results and images directly from FinishLynx cameras using the Video Display Module.



#### Video Display Module on Lynx Cameras

The 1, 2, and 3-sided displays can connect directly to an EtherLynx Vision series photo-finish camera running the Video Display Module to display live finish times, results, custom text, and even FinishLynx results images directly from the camera's HDMI output. The VDM plug-in uses custom scoreboard scripts to output live race data and the options can be controlled from inside the FinishLynx software interface. Select images, send custom messages, or edit the display layout with a click of the mouse.



#### Construction & Frame

The premium aluminum frame offers solid, weatherproof construction and a lightweight design. Plus, the optional wheel assembly for the 2 and 3-sided units makes it easy to move the display within the infield or transport it between events. The large LED panels fit snugly into the aluminum frame and the rear connections are easily accessible during setup. The frame also includes removable vinyl panels to cover the rear of each display. Because the display units are modular, a 1-sided display can be turned into a 2 or 3-sided at a later date if necessary. Any of the four modular LED panels can also be swapped out or replaced at any time.

#### Key Features

- Large panels produce high-visibility graphics suitable for outdoor events
- Weatherproof design protects the LED hardware from harsh weather conditions
- Custom aluminum frame supports the LED panels and provides a polished, professional design
- Seamless data integration with FinishLynx cameras and software
- HDMI input is compatible with most graphic display programs
- Connect multiple display units using an Ethernet cable
- Modular design means you can choose any combination of 1, 2, or 3-sided displays

# Lynx LED Video Displays for Track & Field

Live Field Event or Race Results



Custom-Built Aluminum Frame



Weatherproof Internal Connections



Modular 1, 2, or 3-Sided Designs



## Hardware Specifications

<b>LED Panel Dimensions</b>	200cm W x 100cm H
<b>LED Matrix</b>	416 x 208 pixels
<b>Full Unit Dimensions</b>	<b>1-Sided:</b> L 211cm x W 61cm x H 148cm <b>2-Sided:</b> L 285cm x W 247cm x H 148cm <b>3-Sided:</b> L 285cm x W 247cm x H 148cm *Wheel Assembly Base increases height by 11cm
<b>Full Unit Weight</b>	<b>1-Sided:</b> 110 kg <b>2-Sided:</b> 210.5 kg <b>3-Sided:</b> 303.5 kg
<b>Pixel Pitch</b>	4.81 mm
<b>Refresh Rate</b>	>2000 Hz
<b>Brightness</b>	Up to 4500 nits
<b>Pixel Density</b>	43264 Dot/sqm
<b>Input Voltage</b>	AC100-240V/50-60Hz
<b>Average Power Consumption</b>	260 W/m <sup>2</sup> (520W per side)
<b>Max Power Consumption</b>	780 W/m <sup>2</sup> (1560 W per side)
<b>Operating Temperature</b>	-20°C to +60°C
<b>Operating Humidity</b>	10% to 90% RH
<b>Life Span</b>	100,000 Hours
<b>Front Ingress Protection Class</b>	IP65
<b>Back Ingress Protection Class</b>	IP54
<b>Frame Materials</b>	Aluminum Frame, Vinyl Cover
<b>Mounting</b>	Optional Wheel Assembly Base
<b>Connections</b>	HDMI, AC Power