



# Lynx Infield Display

## Quick Start Guide

### Items not included

Computer running FinishLynx or FieldLynx on Microsoft Windows. Either a Vision or VisionPRO camera with Video Display Module (VDM) option or ResultTV is also required.

### Introduction

The following guide will walk you through the setup, configuration, and operations of the display. If at any point you need additional help, please contact Technical Support: [support@finishlynx.com](mailto:support@finishlynx.com).

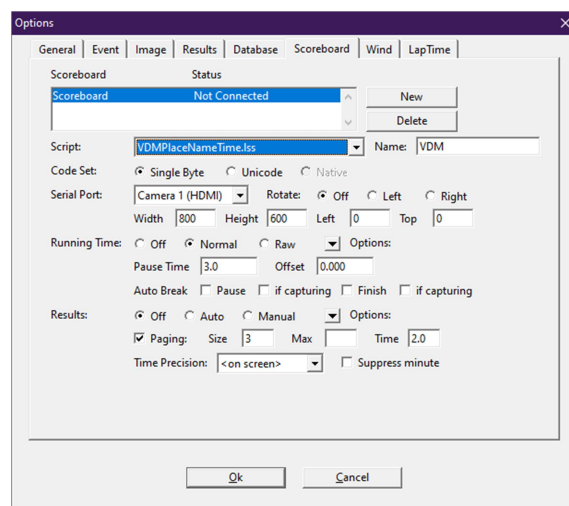
### Setup

Follow the steps defined in the following documents available on the USB drive provided with your order

1. FLD\_DSPLY\_#S Assembly Instructions
2. Installation of Foam Tape Instructions
3. 2-Sided\_LED\_Display\_Electrical\_QSG

### Method 1-FinishLynx & VDM

1. Choose the Video Display Module (VDM) script that best suits your needs. There are several different scripts to choose from.
  - a. See the **VDM section** of the [FinishLynx Online Manual](#) to learn how to:
    - Send scoreboard data
    - Send a photo-finish image
  - b. Watch the [FinishLynx Video Display Module Video](#) (can be found on YouTube) to understand the full operation of VDM.
2. Configure your settings for the scoreboard in the FinishLynx program. Click **Scoreboard | Options** and click **New** to open the window to input this data.
3. Set the following:
  - a. Serial Port: <Camera Name>(HDMI)
  - b. Enter the correct **Width/Height**. This can be found on the USB drive (e.g. 416x208).
  - c. Rotate: **Off**
  - d. Running Time: **Normal**
  - e. Results: **Auto**
  - f. Size : **3**.
4. After entering these settings, restart the software to confirm that the scoreboard script is running.





## Method 2-FinishLynx or Fieldlynx, and ResultTV

---

### ResultTV

1. Go to **File|Options...**|Source:
  - a. Click **New**.
  - b. Script: **Video Display.rss**
  - c. Serial Port: **Network(listen)**
  - d. Port: **1950**
  - e. Click **Ok**.
  - f. Exit and restart ResultTV.
2. Go to **File|Open...** and open the **2x1\_Video Display.rtv** layout.
3. Go to **Layout|Edit Object**.
  - a. Set the **Width** and **Height** on the **Basic** tab. This can be found on the USB drive (e.g. 416x208).
  - b. Click **Ok**.

### FinishLynx or FieldLynx

1. Go to **Scoreboard|Options...**
2. Click **New**.
3. Serial Port: **Network(listen)**
  - a. Port: **1950**
  - b. IP address: address of the ResultTV PC.

### FinishLynx

- Script: **ResultTV\_Video\_1line.lss**
- Running Time: **Normal**
- Results: **Auto**

### FieldLynx

- Results Script
  - Metric: ResultTV\_Video\_Results.lss
  - English: ResultTV\_Video\_Results.lss
  - Standings: ResultTV\_Video\_Standings.lss

## TIPS-FinishLynx    Operating the Scoreboard

---

1. There needs to be an active event for the running time to be displayed. Therefore, you will need to open up a new event.
2. To begin operating the scoreboard for an event, display running time by giving a start signal to the event.
3. To show your results from the race, stop the running time by pressing **Alt+S**, or **Alt+F**, when used with a photoeye.
  - Photoeyes can be internal to the camera if you are using Automatic Capture Mode (ACM).
  - The running time needs to be stopped to display your results on the screen. Both running time and results cannot be shown at the same time. Therefore, once the running time is stopped, the next evaluation will start the results scrolling.