



3-Sided LED Video Display QSG Electrical Setup

Verify that your 3-Sided LED Video Display system contains the components pictured below.
If not, or if you need additional help, please call: USA 978-556-9780 or email support@finishlynx.com.

Items Needed

LED Sending Box (1)		Power Jumper Cables (11) (Black and Yellow)	
LED Sending Box Power Cable (1)		Power Input Cable (1)	
USB Cable (1) (For programming use only)		Long Signal Input (1) (Black Ethernet RJ45)	
Short Signal Jumper Cables (11) (Black Ethernet RJ45)		50ft Long HDMI Cable	
DVI-to-HDMI Adaptor		6ft Long HDMI to DVI Cable	

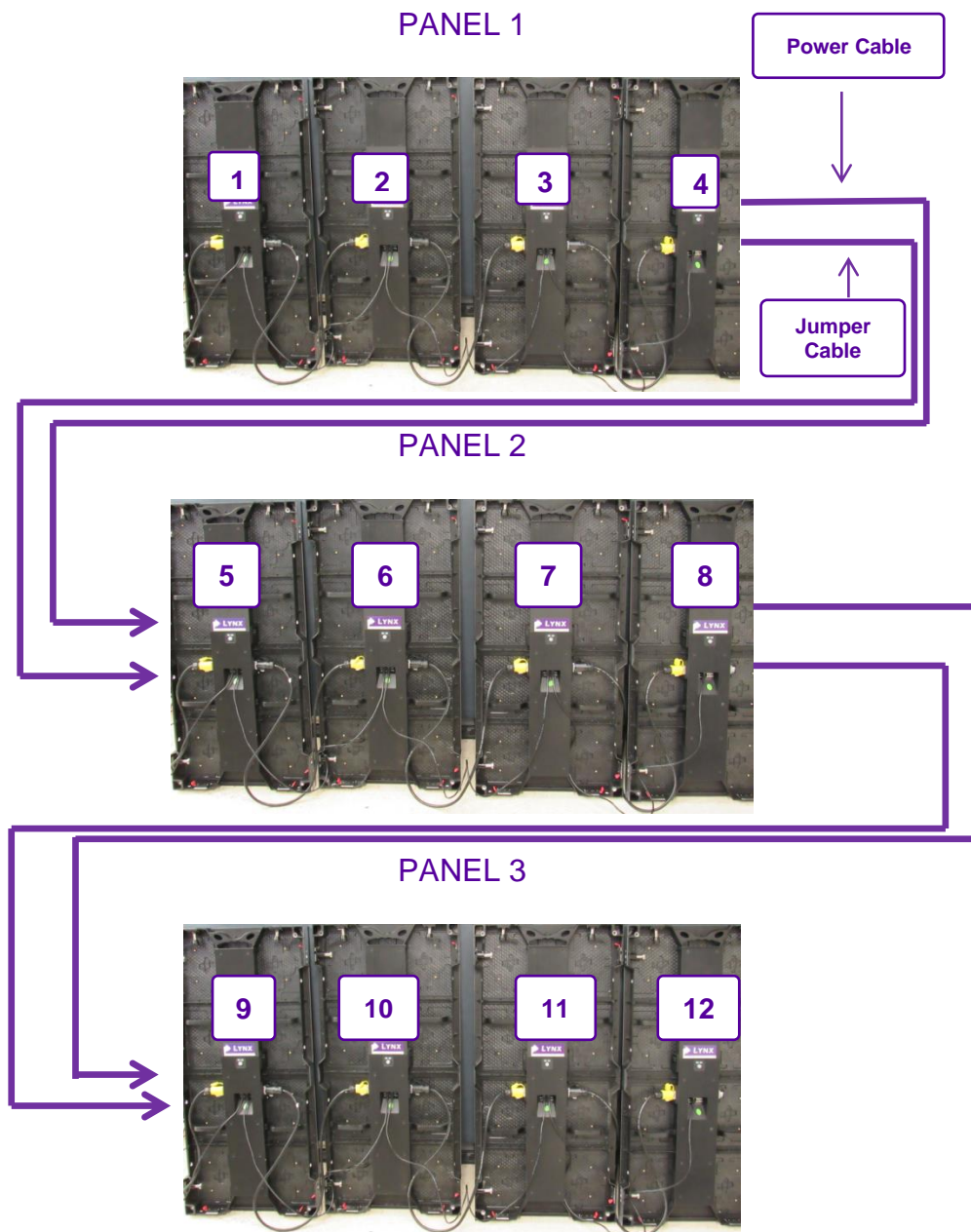
Step 1: Connect Scoreboard Electronics

Once the Display is assembled (see FLD_DSPLY_3S Assembly Instructions REV A document), the next step is to connect the electronics of the scoreboard.

- a. Plug in the **Power Jumper Cables & Short Jumper Cables** between panels 1 – 2, 2 – 3, 3 – 4, 4 – 5, 5 – 6, 6 – 7, 7 – 8, 8 – 9, 9 – 10, 10 – 11, and 11 – 12.
- b. Plug the **Power Input Cable** into the power source and into Panel 1.

Note: When viewing the display from the back side, the panels should be set up in ascending order from 1-4, 5-8 & 9-12 (see image below). The connection to the **LED Sending Box** and power is from **Panel 1**.

- c. Insert the **Power Cable** into the **LED Sending Box**.
- d. Connect the **Signal Input Cable** into Panel 1 Signal Input Connector.
- e. Connect the **Signal Input Cable** into the LED Sending Box display **port A**.
- f. Insert the **HDMI Cable** into the computer's HDMI port and insert the opposite end into the DVI port on the LED Sending Box with the DVI-to-HDMI connector.

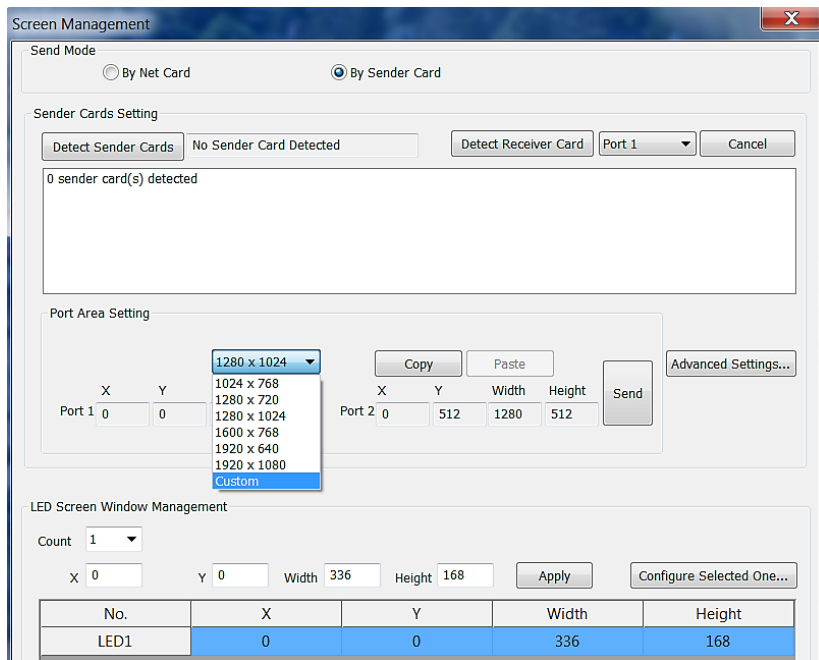


The image above shows the back of the display with the panels wired correctly. Panel 1 has the Power Input and Signal Input. Panel 2 has Power input and Signal Input connected via Panels 4 & 5. Panel 3 has Power Input and Signal Input connected via Panels 8 & 9.

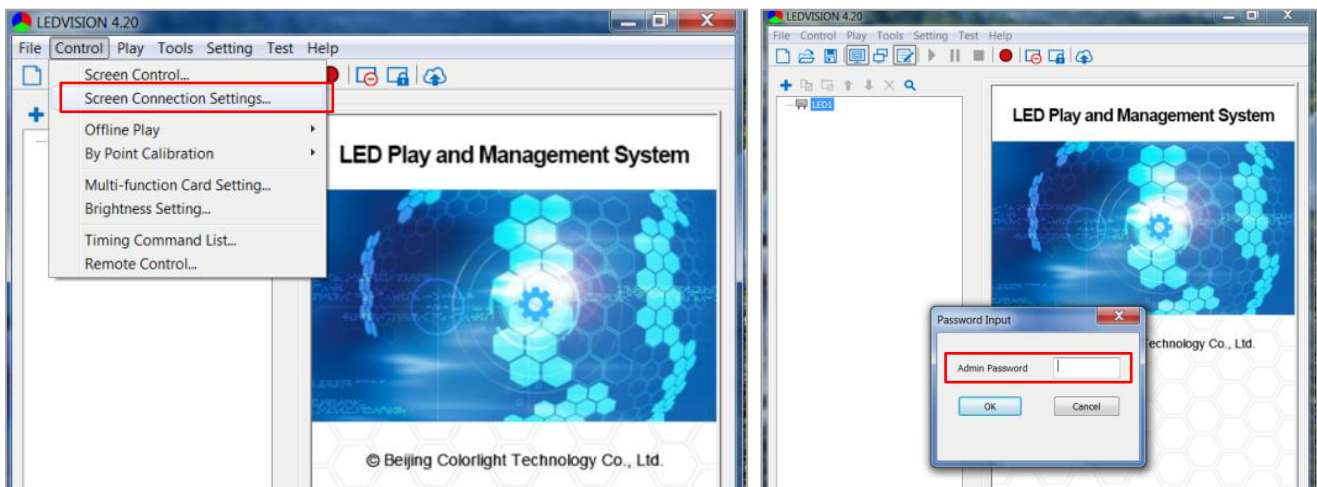
Optional: Re-programming the LED Panels

***You will only need to re-program your LED display if it WASN'T pre-programmed at Lynx System Developers or if the panels are set up in a different order.

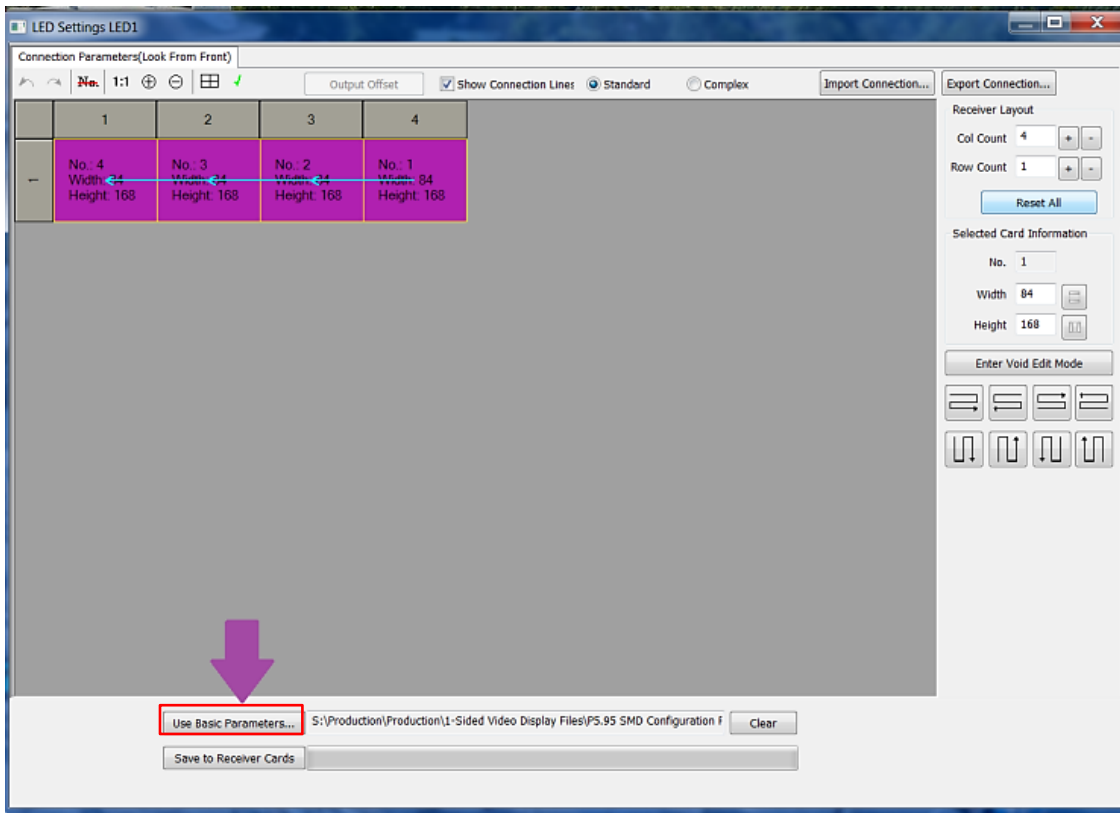
- a. Once you have connected the LED panels using the steps above, you can proceed with the programming process. You will need to use the **USB Out** port on the LED Sending Box to program the panels. Insert the square end into the LED Sending Box and place the USB end into your computer. This cable is only needed when you are programming the display. It is not needed when operating the display.
- b. Download the LED Vision program from the Lynx USB Drive.
 - File Name: Ledvisionsetup
- c. Once the LED Vision program is installed, select **Control | Screen Control...** Switch Port 1 Height and Width to 416 x 208. Select Apply. Then when you load receiver card, select Port 1.



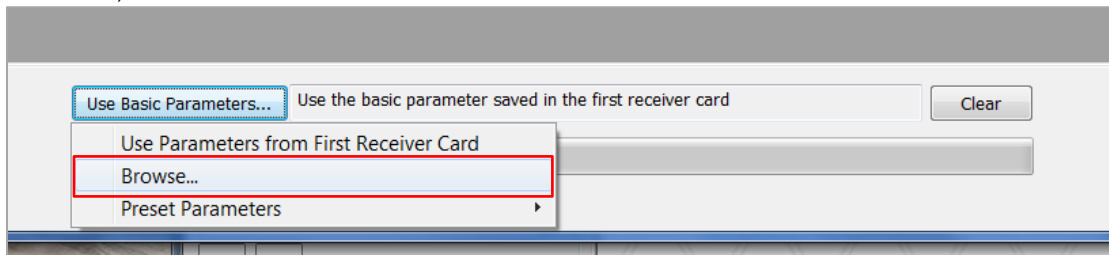
- d. Navigate back to **Control | Screen Connection Settings**. Then Input the password when prompted: **168**.



- e. The **Connection Parameters (Look from Front)** screen will appear. Select **Use Basic Parameters**



- f. In the sub-menu, select **Browse**.



- g. Select and load the file: **P4.81 SMD Configuration Files 4x1x3.rcvp**. This file is on the Lynx USB Drive.
- h. Select Save to Receiver cards. Panels should load and be programmed correctly.
- i. Next, go to the main screen on the LED Vision software and select File | Open. Open the **Lynx.vsn** file that is on your Lynx USB drive. Select one of the three sample files to test the display.
- j. Note: If your display is not showing the sample image in sequence order, you might have to redo step f.

This concludes the 3-Sided LED Display – Electrical Connections QSG.

Please contact technical support with any questions: support@finishlynx.com