

# FieldLynx Lite

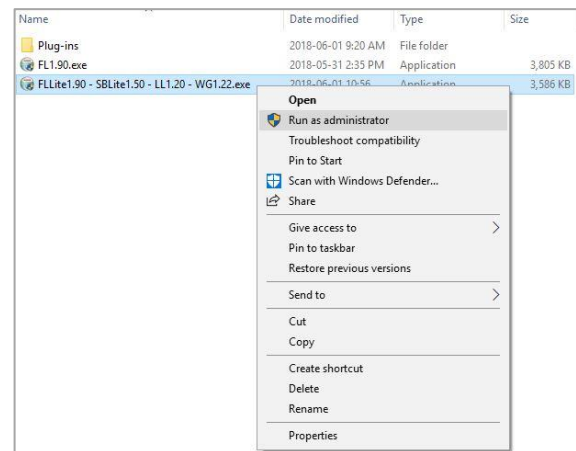
## Quick Start Guide

### Introduction

The following guide will walk you through the installation, setup and operations of FieldLynx Lite, including connections to display boards, wind gauge and LaserLynx. Equipment needed may include: wireless access point, Ethernet switch, USB-Serial adapter(s). If you need additional help, please contact Tech Support: [support@finishlynx.com](mailto:support@finishlynx.com).

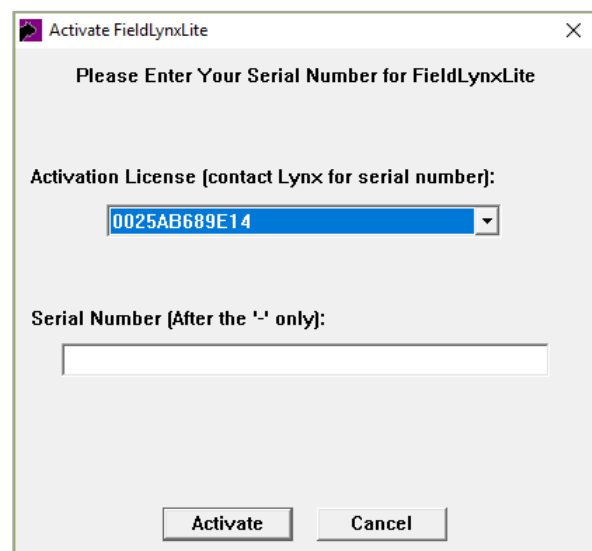
### Step 1 Installation

- Locate the FieldLynx Lite installer (FLLite #.## - SVLite#.## - LL#.## - WG#.##.exe) from the Lynx USB drive or download the program from [www.finishlynx.com](http://www.finishlynx.com)
- Right-click on the installer and click **Run as Administrator**.
- Follow the prompts to complete the install.
- Open FieldLynx Lite, click **Help** | **About** and verify the latest versions are installed.
- Optional – install the USB-Serial adapter.



### Step 2 Activation

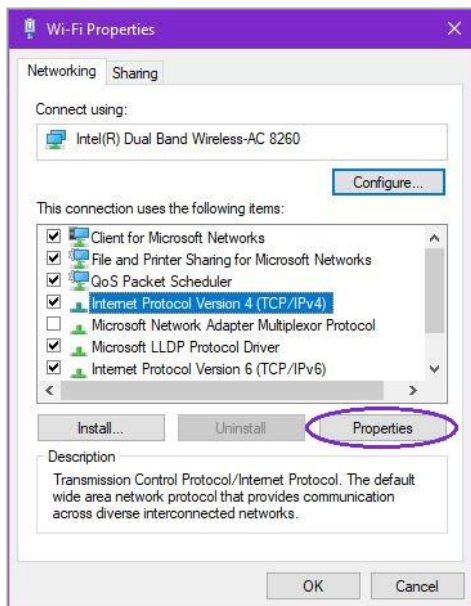
- Open the FieldLynx Lite Program.
- The **Activate FieldLynxLite** dialog appears.
  - Take a picture and send to [support@finishlynx.com](mailto:support@finishlynx.com).
  - Lynx support will provide a serial number.
- Enter the **Serial Number (After the '-' only)**:
- Click **Activate**.





### Step 3 Configure the Computer/Tablet Network Settings

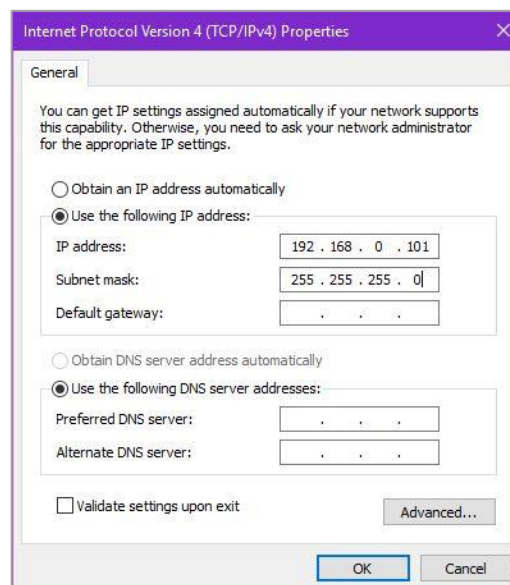
- From the Windows start menu search for the **Network and Sharing Center**.
- Click **Change Adapter settings**.
- Right-click on the network connection; select **Properties**.
- Select **Internet Protocol Version 4 (TCP/IPv4)** then **Properties**.



- Select **Use the Following IP address:** and enter the desired IP address of the computer.

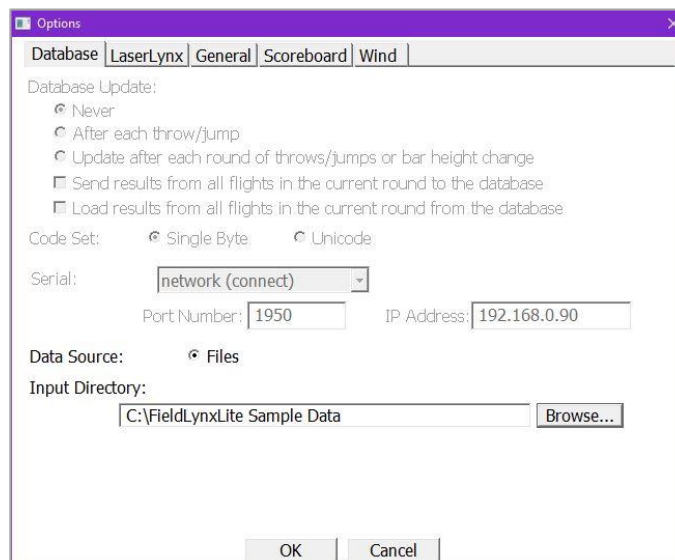
**Note:** FieldLynx LITE tablets will typically be assigned as 192.168.0.100 and up.

- Enter the subnet mask of **255.255.255.0**
- Click **OK** and close the windows.



### Step 4 Configuring the Database Options

- Open the FieldLynx LITE Program and navigate to **Options / Preferences**.
- Click the **Database** tab.
  - Click the **Browse...** button to set the **Input Directory**: to the location of the competition folder that will store the lynx.ppl file.





## Step 5 Configuring the LaserLynx Options

- a. Open the FieldLynx LITE Program and navigate to **Options / Preferences**.
- b. Click the **LaserLynx** tab.
  - ii. Click the **Laser:** drop-down and select the model of laser being used.
  - iii. Click the **Serial:** drop-down and select the **COM#** of the USB-Serial adapter used for communication between the FieldLynx LITE computer and the laser.
  - iv. Check that the serial protocol parameters match the laser configuration. The Mato MTS-602R default is **9600-8-None-1** and Flow Control to **None**.

Options

Database LaserLynx General Scoreboard Wind

Laser: Mato MTS-602R

Measure: Triangular

Serial: COM22 Baud: 9600

Data Bits: 8 Parity: None

Stop Bits: 1 Flow Control: None

☒ Prompt the user to select a jump board

Data Transfer Timer (ms): 50

OK Cancel

## Step 6 Configuring the Scoreboard Options

- a. Open the FieldLynx Lite Program and navigate to **Options / Preferences**.
- b. Click the **Scoreboard** tab.
  - i. Click the **New** button to create a new scoreboard output.
  - ii. Click the **Name** text box and enter a name for the output so it is easy to distinguish if you have multiple scoreboards.
  - iii. Click to select the appropriate **Results Scripts: (Metric: and English:)** for the scoreboard being used.
  - iv. Click the **Serial:** drop-down and select the communication method for the scoreboard. These settings are specific to the scoreboard and manufacturer.
  - v. Click the **Settings** button to choose the specific data parameters for the scoreboard.

Options

Database LaserLynx General Scoreboard Wind

Scoreboard	Status
Scoreboard	Running

New Delete

Result Scripts: Name: Scoreboard

Metric: uGraph\_LLite.lss

English: uGraph\_LLite.lss

Serial: network (connect)

Port Number: 21967 IP Address: 192.168.0.123

Code Set: ☒ Single Byte ☐ Unicode

Settings... Message...

OK Cancel

### NOTE:

Close and restart FieldLynx Lite to initialize the Scoreboard setup. Navigate back to Scoreboard options and confirm that the **Status** is now **Running** for your scoreboard.



## Step 7 Configuring the Wind Options

- a. Open the FieldLynx Lite Program and navigate to **Options / Preferences**.
- b. Click the **Wind** tab.
  - i. Click the **Module**: drop-down and select the wind gauge being used.
  - ii. Click the **Serial**: drop-down and select the communication method for the wind gauge. These settings are specific to the wind gauge and manufacturer. The Lynx wind gauge (WG-Lynx) default is **9600-8-None-1** and Flow Control to **None**.

Options

Database | LaserLynx | General | Scoreboard | Wind

☐ Disable Plug-in

Module: WG-Lynx

Mode: ☒ Manual ☐ Custom

Interval: 5 Seconds

Serial: COM22 Baud: 9600

Data Bits: 8 Parity: None

Stop Bits: 1 Flow Control: None

OK Cancel

## Step 8 Event Setup

From the FieldLynx Lite main window, in the **Event** box:

- a. Select the correct unit of **Measure**.
- b. Select the correct **Event Type**.
- c. (Optional) Enter **Event #**, **Round #**, **Flight #** and **Event Name**. Used for scoreboard display only.

**NOTES:** The data entry fields and button in the **Mark** box will update automatically, based on the selected **Event Type**. For vertical jumps, click the **Bar Height** to enter a new value.

## Step 9 LaserLynx Setup

Follow the instructions in the LaserLynx QSG to set up the control measurements.

## Step 10 Athlete Setup

*Method 1 – Using Meet Management software*

- a. Configure the meet management software to save the Lynx Interface files (lynx.ppl) in the folder configured in the Database Options during Step 3.

*Method 2 – Using FieldLynx Lite*

- a. Enter the **ID**, **Last Name**, **First Name** and **Affiliation** in the **Athlete** box.
- b. Click the **Add** button.

**NOTE:** Athletes will be added to the lynx.ppl file located in the folder configured in the Database Options during Step 4.

*Method 3 – Using Excel or Notepad*












- a. Manually create a lynx.ppl file (csv) using Excel or Notepad and save it in the folder configured in the Database Options during **Step 4**.
- b. Format:  
**ID, LastName, First Name, Affiliation**  
**ID, LastName, First Name, Affiliation**



## Step 10 Competition




The event should also be done on the traditional paper as backup because in vertical events the previous attempts are not saved for each competitor.

- a. Enter the Athlete **ID**: for the athlete up and then click **Find**.
  - i. The athlete's information will appear in the **Athlete** box.
- b. Record the athlete's mark and enter it in the **Mark** box.

	Tap and enter the values using the keyboard.		
	Then, click.		Obtain a measurement from a LaserLynx.
	Obtain a wind reading from the wind gauge <b>Note:</b> click the wind cell in the grid to show the Wind button (horizontal jumps)		Clears height (vertical jumps)
	To erase the mark and enter a new one.		Foul
	To select alternative board (horizontal jumps)		Pass
	Convert units (English/Metric)		Send mark to the scoreboard

FieldLynxLite v1.93

File Mark Options Scoreboard Help

Event

Event #:

Round #:

Flight #:

Event Name:

Measure: ☒ Metric ☐ English [Set up LaserLynx...](#)

Event Type:

Athlete

ID:

Last Name:

First Name:

Affiliation:

Mark

#	Mark	Wind
1	6.54	+1.3

