

IdentiLynx+ 720P Digital Race Timing Camera

The **IdentiLynx+** is an Ethernet-based, full-frame digital video camera that integrates with EtherLynx photo-finish cameras to produce time-stamped finish line videos. **IdentiLynx** video cameras provide high-resolution, front-facing video that is time-synchronized inside FinishLynx to quickly and accurately identify competitors at the finish line.





The IdentiLynx+ camera captures up to **1280 x 720** pixels at **30 fps** and offers several improvements over past IdentiLynx models. The camera includes a P-Iris motorized lens so the zoom and focus can be adjusted remotely within the FinishLynx software. It also has a sturdy plastic housing that protects the lens and rear connections from moisture and damage. Set up the IdentiLynx+ at your finish line and start capturing high-definition, time-stamped videos at all your races.

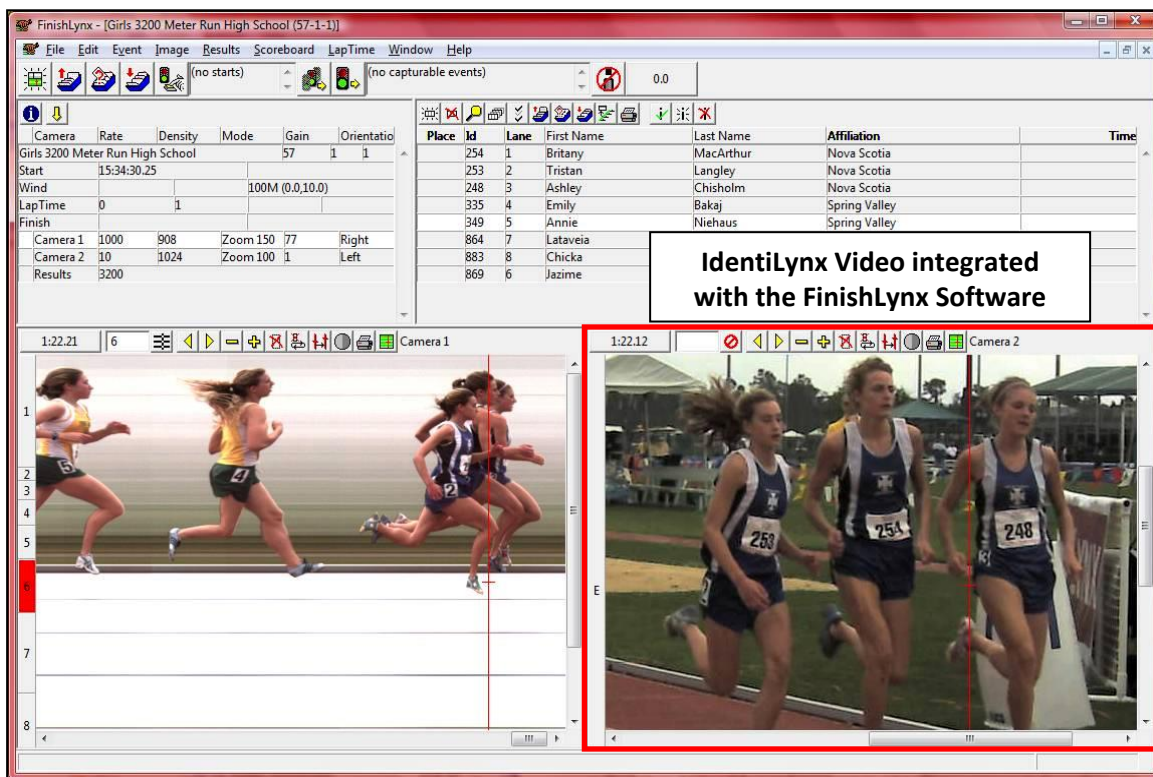
Find the Right Model For You:

Compare IdentiLynx+ with the IdentiLynx XR+ (Extended Resolution)

- Separate capture modes allow you to optimize the capture resolution for your event.
- Adjust the camera’s remote control focus and zoom from within the FinishLynx Software.
- The sturdy, weatherproof housing protects the lens and connections from damage.

| IdentiLynx Model | IdentiLynx+ | IdentiLynx XR+ |
|-----------------------|---|---|
| |  |  |
| Max Resolution | 1280 x 720 @ 30 fps | 2592 x 1944 @ 15 fps |
| Max Frame Rate | 30 fps (1280 x 720) | 30 fps @ 1920 x 1080 |
| Resolution 1 | n/a | 2592 x 1944 @ 15 fps |
| Resolution 2 | n/a | 2560 x 1440 @ 15fps |
| Resolution 3 | n/a | 2048 x 1536 @ 20 fps |
| Resolution 4 | n/a | 1920 x 1080 @ 30 fps |
| Resolution 5 | n/a | 1600 x 1200 @ 20 fps |
| Resolution 6 | n/a | 1280 x 960 @ 20 fps |
| Resolution 7 | 1280 x 720 @ 30 fps | 1280 x 720 @ 30 fps |
| Resolution 8 | 720 x 480 @ 30 fps | 720 x 480 @ 30 fps |
| Resolution 9 | 320 x 240 @ 30 fps | 320 x 240 @ 30 fps |

Athlete Identification Has Never Been Easier



IdentiLynx+ Hardware Specifications

| | |
|---------------------------|--|
| Shutter Speed | Automatic |
| JPEG image quality | Up to 5 megapixels |
| Gain | Automatic |
| Lens | 2.8-8.5mm, f/1.2, Motorized Zoom Lens |
| Power Supply | Power-Over-Ethernet (PoE 802.3af); 12VDC; 24 VAC |
| Dimensions | 5.07" (L) x 2.72" (W) x 2.76"(H) |
| Weight | 0.4 lb (0.165 kg) |
| Construction | Plastic and aluminum |

Integration with FinishLynx Timing Software

- Remotely adjust the camera's zoom and focus within the FinishLynx software to optimize image quality.
- IdentiLynx+ video is automatically time-synced with the photo-finish image – clicking on a finish line capture will instantly show the corresponding front-facing video frame.
- IdentiLynx+ videos can be advanced and rewind frame-by-frame to ensure timers can find frames with a clear bib/hip number. Videos can also be reviewed in real time while the race is still underway.
- Overlay athlete names, times, and affiliations on the video frames from inside FinishLynx.
- IdentiLynx cameras can be used with the Automatic Capture Mode (ACM) plug-in.
- FinishLynx enables the standard EtherLynx camera features to be used with IdentiLynx cameras, including zoom, automatic scrolling, gamma, brightness, and contrast adjustment.
- IdentiLynx+ video images are stored on the computer as individual images and can be printed directly from the FinishLynx software, either with or without included results.
- IdentiLynx videos can be manually cropped, viewed in forward or reverse, viewed at different speeds, exported to AVI format, and uploaded to the internet if desired.