



LynxPad™ 3.1

Quick Start Guide

Introduction

This guide teaches you how to perform basic functions in LynxPad while managing your next competition.

For help while using LynxPad, click **Help** from the Menu bar and click **Contents** to open the online *LynxPad User's Guide*.

To learn what happens when you click an icon in LynxPad, position the pointer over that icon and look for a “tool tip” in the lower left corner of your screen.

Installing and Starting LynxPad

Before installing LynxPad... install this [Microsoft update](#). Choose the **x86 version** once prompted.

www.microsoft.com/en-us/download/details.aspx?id=14431

Microsoft Visual C++ 2005 Service Pack 1 Redistributable Package ATL Security Update

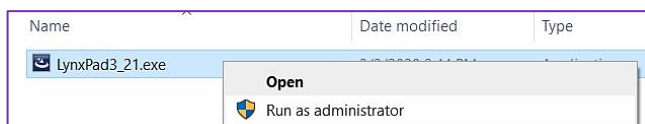
Important! Selecting a language below will dynamically change the complete page content to that language.

Select Language:

Choose the download you want

<input type="checkbox"/> File Name	Size
<input checked="" type="checkbox"/> vcredist_x86.exe	2.6 MB
<input type="checkbox"/> vcredist_IA64.exe	6.3 MB
<input type="checkbox"/> vcredist_x64.exe	3.1 MB


Once completed, **right-click** on the **LynxPad installer icon** and click “**Run as Administrator**”. Then proceed through the installation steps. If you still receive the Error 1904, you may need to restart your computer for the update to work.




Once your Microsoft update is complete, LynxPad can be installed by downloading it from the Lynx website (www.finishlynx.com).


Start LynxPad by clicking the Microsoft Windows Start button and selecting **All Programs | LynxPad**.

Step 1: Creating a New Competition

1. Before creating a new competition in LynxPad, first create a folder somewhere on the computer where you want your competition files stored. This becomes your *competition directory* and it is the same directory shared by FinishLynx, NetExchange, and ReacTime.
2. Either click  or **File** from the Menu bar and select **New**. The **New Competition** dialog appears.
3. Type the competition **Name** and **Location** in the fields provided. Select **Date** from the drop-down list.
4. Click the **Browse...** button and navigate to the competition directory you created earlier.
5. Click **Ok**. Blank **Events**, **Athletes**, and **Heats** windows open on the screen. You have successfully created a new competition in LynxPad.

Important: LynxPad does *not* automatically save the competition when you first create it. Instead, you must manually save the competition either by clicking  or **File | Save** from the menu bar.


Step 2: Adding Events

1. In the Events window, click the  icon. The **Add/Edit Event** dialog appears.
2. LynxPad automatically assigns a new event number, but you can type a different, unique value if you want.
3. Complete the remaining fields by typing or selecting the information from drop-down lists, including:
 - **Event Name**
 - **Gender**
 - **Event Type**
 - **Distance** (You can also enter a custom distance)
 - **Number of Rounds** – If more than one, click **Apply** and then **Yes** after entering a new number.)
 - **Measurement System** – If adding a field event.
 - **Seeding Criteria**
4. Then, click the **Add** button.
5. When you are finished adding events, click **Done** to return to the LynxPad main screen. The new events you entered appear in the **Events** window.

Step 3: Adding Affiliations

1. Click **Competition** from the Menu bar and select **Setup Affiliations...** The **Setup Affiliations** dialog appears.
2. Type the name of an affiliation in the **Name** text field.
3. Press the **Tab** key to tab to the **Abbrev** text field.
4. Type a 4-character maximum abbreviation code for the affiliation.
5. Click the **Add** button. When you are finished adding affiliations, click the **Done** button.


Step 4: Adding Individual Athletes to Events

1. In the Athletes/Relays window, click . The Add/Edit Athlete dialog appears.
2. Now you can enter or select the following athlete information:
 - **ID**
 - **First and Last Name**
 - **Affiliation**
 - **License**
 - **Gender**
 - **Events and Seed Marks**




Step 5: Assigning Athletes to Events

There are two ways to assign an athlete to an event:

1. **From the Add/Edit Athlete Dialog:**
 - a. Double-click an athlete from the **Athletes/Relays** window. The **Add/Edit Athlete** dialog appears.
 - b. From the **Event #1 | Event Name** drop-down list, select the event to which you want to assign the athlete. You can repeat this step for the Event #2-4.
Note: You can also add an athlete to more than four events.
 - c. Click **Update**. The athlete is assigned to the event(s) you just selected.
2. **From the Events Window**
 - a. Select an event from the **Events** window.
 - b. Select an athlete from the **Athletes/Relays** window.
 - c. Either click  or **Athletes/Relays** from the Menu bar and select **Assign to Selected Event**. The event appears in the first available **Event #** column next to the athlete's name in the Athletes window.

Step 6: Seeding Athletes to Events

1. Select the event and round you want to seed from the **Events** window.
2. Click  from the **Heats** window. The **Seed- [Event Name]** dialog appears.
3. Click **Seed**. If the event has multiple rounds, the **Advancement Selection** dialog appears.
4. In the **Number of Heats next round** field, type the number of heats or flights you want athletes advanced into for the next round.
5. Click **Apply**. LynxPad automatically calculates the number of athletes to advance.
6. If you selected **Time & Place** when specifying the advancement criteria, LynxPad suggests several advancement formulas for you to select. Click to select one from the list.
7. Click **Ok** to exit the dialog. The athletes are seeded into the heats according to the criteria you specified earlier.
8. Click **Ok** again. Click **Yes** when asked if you want to update the start lists.

Step 7: Printing a Report

1. Click **Reports** from the Menu bar and then select a report from the drop-down menu.
2. A dialog appears from which you can select certain report criteria, such as the **Event**, **Gender**, and **Round**. You can also check the **Field Series** and **Splits** boxes to include that information in the report, if it is available.
3. Click **Ok** after you have finished selecting the report criteria. The Print dialog appears.
4. Click **Print** to send the report to the printer.



Transferring Start Lists and Results between LynxPad and FinishLynx

Quick Start Guide

Introduction

To transfer start lists and results between the LynxPad and FinishLynx applications, you must configure the FinishLynx Database directories to match the LynxPad *competition directory*, whether you are using one computer or networking two computers.

Before You Begin

Set aside at least 15 minutes to complete these instructions. Note that this Quick Start Guide assumes:

- You are running Microsoft Windows XP.
- You have LynxPad and FinishLynx installed on your computer(s).
- You have created a competition in LynxPad with selected events.

Configuring LynxPad and FinishLynx on One Computer

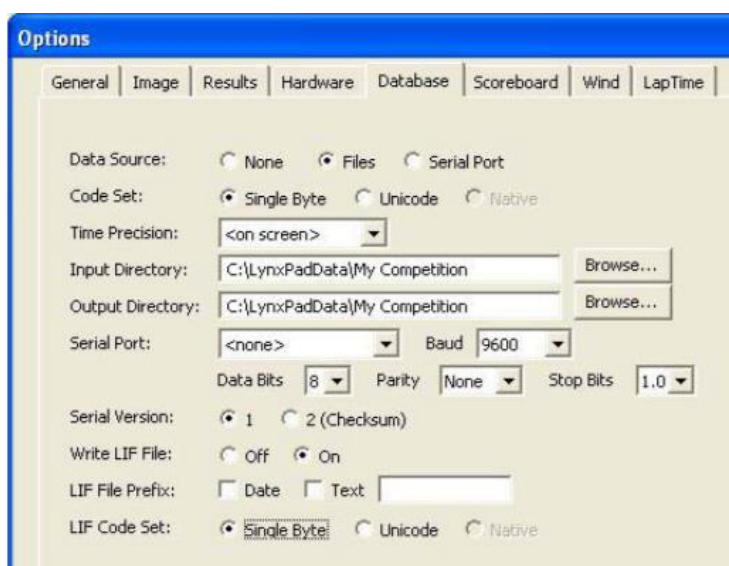
Set up LynxPad

1. Run LynxPad
2. Open a competition in LynxPad.
3. Click **File** from the Menu bar and select **Options...** The **Options** dialog appears.
4. Note the LynxPad *competition directory* listed in the **Directory:** text field, and then click **Ok**. The LynxPad *competition directory* stores the files used by FinishLynx to load start lists.



Set up FinishLynx

1. Run FinishLynx
2. Click **File** from the Menu bar and select **Options...** The **Options** dialog appears.
3. Click the **Database** tab.
4. On the **Input Directory** line, click the **Browse...** button and navigate to the LynxPad competition directory. Then, click **Ok**.
5. On the **Output Directory** line, click the **Browse...** button and navigate to the LynxPad competition directory. Then, click **Ok**.
6. Now, make sure the following selections on the Database dialog are made:
 - **Data Source:** Select **Files**
 - **Write LIF File:** Select **On**
 - Click **Ok**.

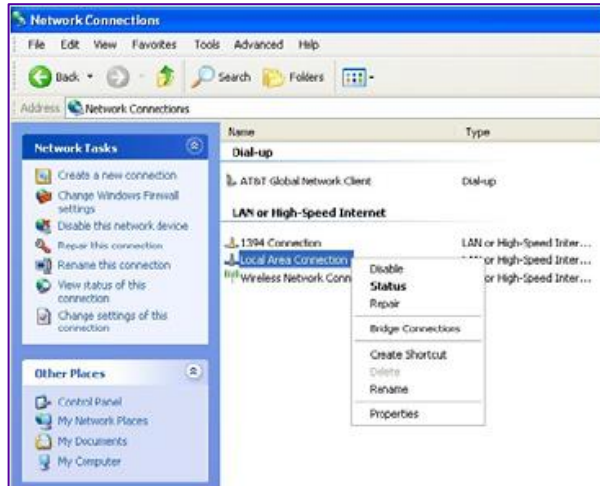


Configuring LynxPad and FinishLynx on Two Networked Computers

Note: This section assumes the LynxPad and FinishLynx computers are connected with a hub and network cables.

Set an IP Address on both computers (Follow these steps on both the LynxPad and FinishLynx computers)

1. Click the Microsoft Windows **Start** button.
2. Click **Control Panel** and then double-click **Network Connections**. The **Network Connections** dialog appears.
3. Right-click on **Local Area Connection** and click **Properties** from the drop-down list.



4. The **Local Area Connection Properties** dialog appears. Click to highlight **Internet Protocol (TCP/IP)** and then click **Properties**.



5. The Internet Protocol (TCP/IP) Properties dialog appears. Select: Use the following IP address.
6. On the IP Address line, type the following IP address:
 - LynxPad computer: **192.168.0.90**
 - FinishLynx computer: **192.168.0.5**
7. On the Subnet Mask line, type: 255.255.255.0.
8. Leave the **Default Gateway** line **blank**. Click **Ok** twice.

Determine the LynxPad competition directory

1. Run on LynxPad.
2. Open a competition in LynxPad.
3. Click **File** from the Menu bar and select **Options...** The Options dialog appears.
4. Note the LynxPad competition directory listed in the **Directory: text field**, then click **Ok**. The LynxPad competition directory stores the files used by FinishLynx to load start lists.



Share on the LynxPad computer

1. On the LynxPad computer, either click the Microsoft Windows Start button, and then click My Computer, or double-click the My Computer icon on your computer's desktop screen.
2. Right-click the Local Disk (C:) icon and select Sharing and Security...
 - a. If you are logged onto a *workgroup*, or if you are running Microsoft Windows XP Home Edition, click the **Share this folder on the network** and **Allow network users to change my files** checkboxes, then click **Ok**.
 - b. If you are logged into a domain, select **Share this folder**, set the permissions to **Full control**, then **Ok**.
 - c. You have now shared the files and folders on the LynxPad computer.

Map a network drive on the FinishLynx computer

1. On the FinishLynx computer, click the Microsoft Windows **Start** button, then click **Search**. The **Search Results** dialog appears.
2. Under What do you want to search for? on the left pane, click Computers or people.
3. Click A computer on the network.
4. In the Computer Name text field, type the IP address of the LynxPad computer: **192.168.0.90**, then click Search.
5. After Microsoft Windows finds the LynxPad computer, double-click the IP address on the right pane.
6. Right-click the **C folder** and select **Map Network Drive...** The Map Network Drive dialog appears.
7. Select a drive letter, for example, **Z:**
8. The drive letter you selected allows you to access the LynxPad computer from the FinishLynx computer. Click **Finish**.




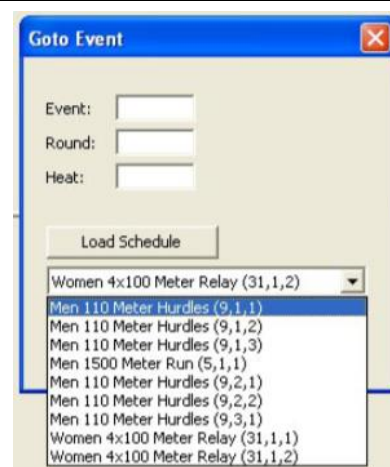
Configure the FinishLynx database directories

1. Run FinishLynx.
2. Click **File** from the Menu bar and select **Options...** The Options dialog appears.
3. Click the **Database** tab.
4. Make sure the following selections are made:
 - a. **Data Source:** Select **Files**
 - b. **Input Directory:** Click the **Browse...** button and navigate to the LynxPad *competition directory* (for example, **Z:\LynxPadData\My Competition**)
 - c. **Write LIF File:** Select **On**
5. Now you are ready to transfer start lists and results between the LynxPad and FinishLynx computers.

Transferring Data between LynxPad and FinishLynx

After configuring the competition directory in LynxPad and FinishLynx, whether on one computer or two networked computers, you are now ready to import a start list into FinishLynx and import results into LynxPad.

1. Import a Start List into FinishLynx
 - a. In FinishLynx, click **File** from the Menu bar and select **Goto Event**. The Goto Event dialog appears.
 - b. Click the **Load Schedule** button.
 - c. Click the drop-down arrow in the text field below the Load Schedule button to view the start lists available for FinishLynx to load.
 - d. Select an event from the list, then click **Ok**. A new event is created in FinishLynx. The start list appears in the FinishLynx Results Zone.
 - e. After capturing and evaluating the event, click **File** from the Menu bar and select **Save**. The Save As dialog appears.
 - f. Click **Save** again. The event results are now ready for import into LynxPad.
2. Import Results into LynxPad
 - a. In the LynxPad Events window, select the event you just evaluated in FinishLynx. The event appears in the Heats window.
 - b. Click  from the Heats window, the Load Results icon. The results for the event appear in the Heats window.



Place	Lane	ID	First Name	Last Name	Affiliation	Time	ReactTime
1	4	479	Michael	Thomas	Arkansas	9.89	
2	2	676	Vytautas	Kancleris	Northern Arizona	10.00	
3	8	471	Eddie	Jackson	Arkansas	10.01	
4	6	861	Chris	Stokes	George Mason	10.13	
5	3	451	Ron	Bramlett	Alabama	10.23	
6	5	638	Antwon	Hicks	Mississippi	10.45	
7	7	772	Jabari	Greer	Tennessee	10.99	