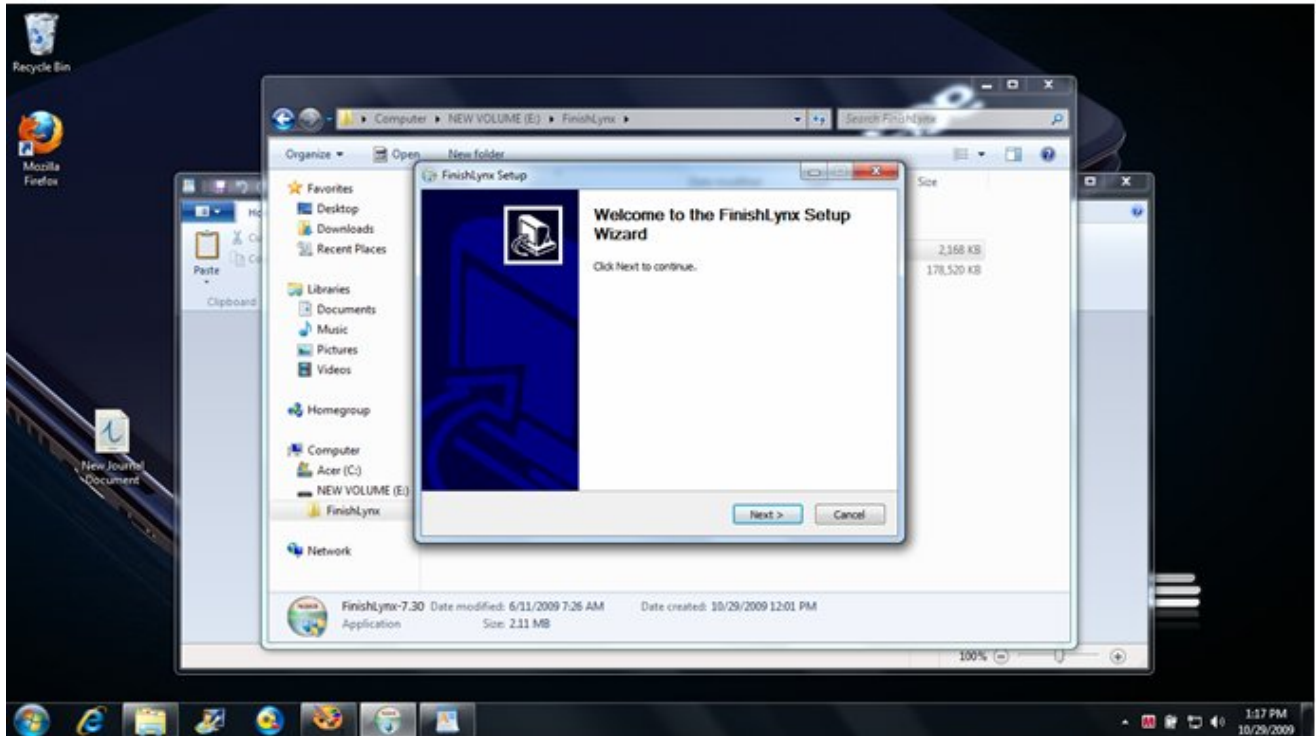
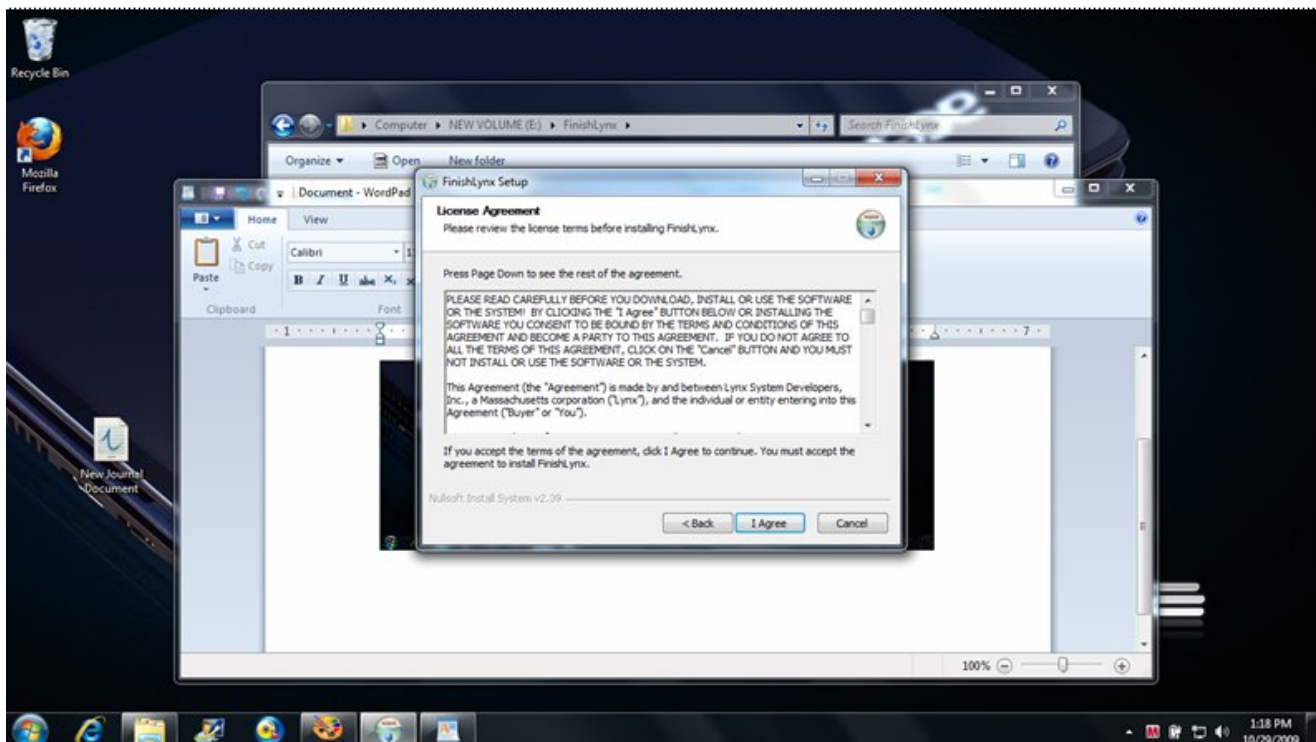


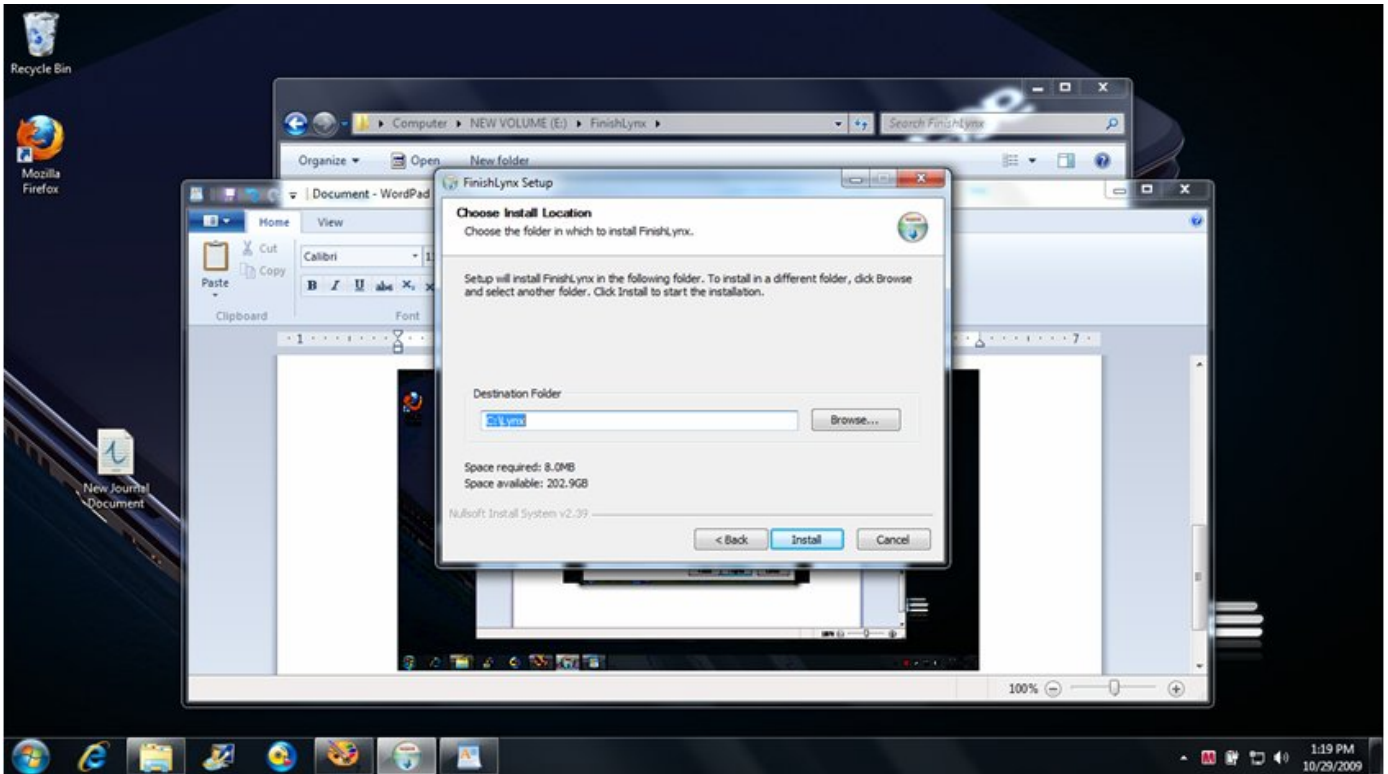
NOTE: Please be using the newest version of Finishlynx.exe for this install - Version 7.0 or above.



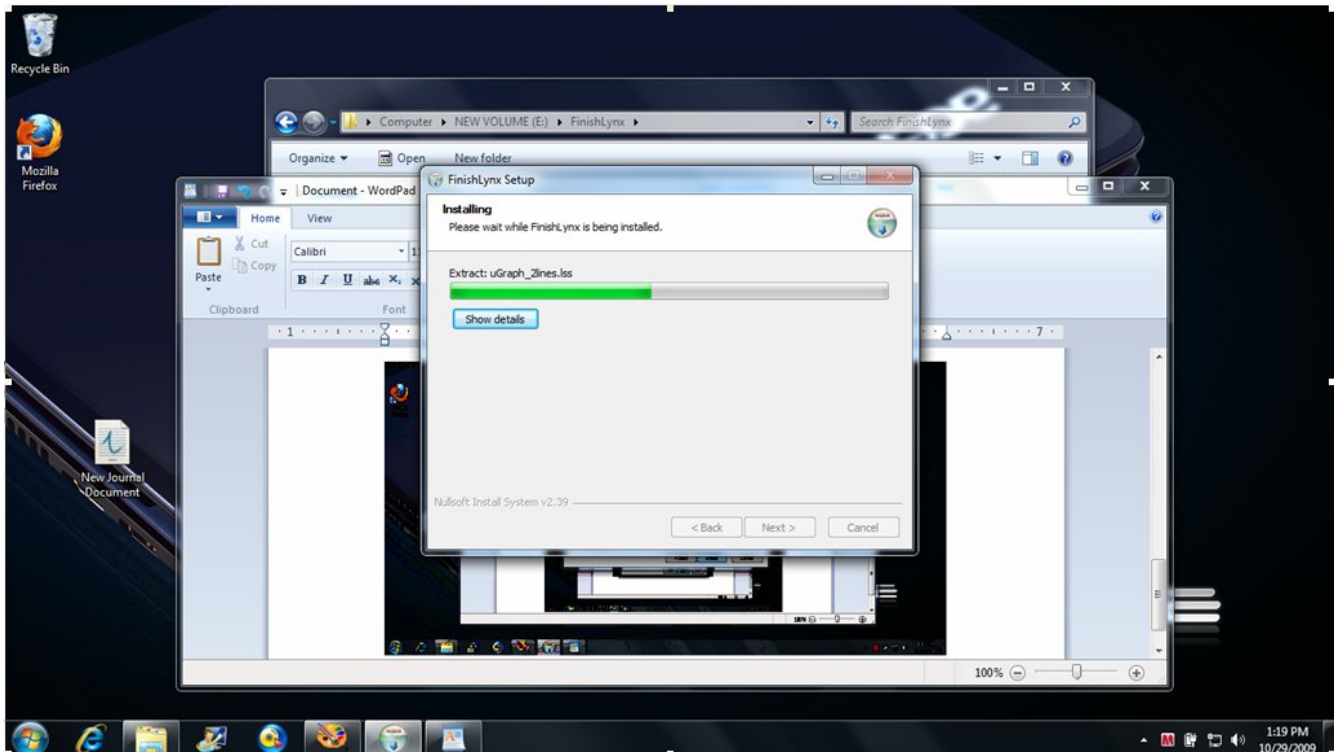
1. Click Next

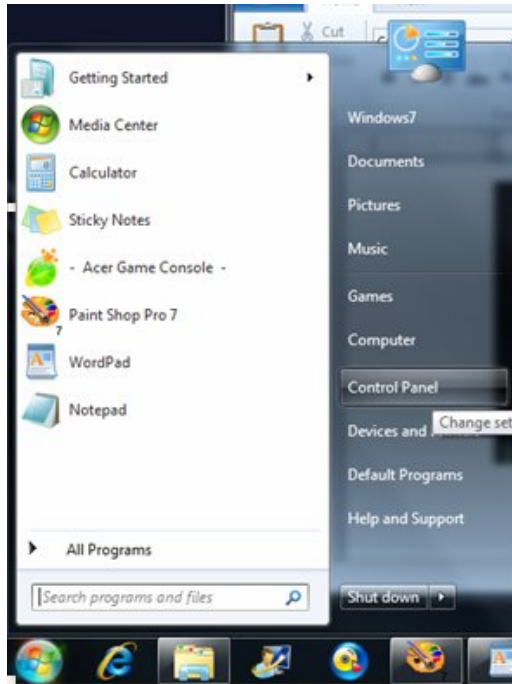


2. Click I agree

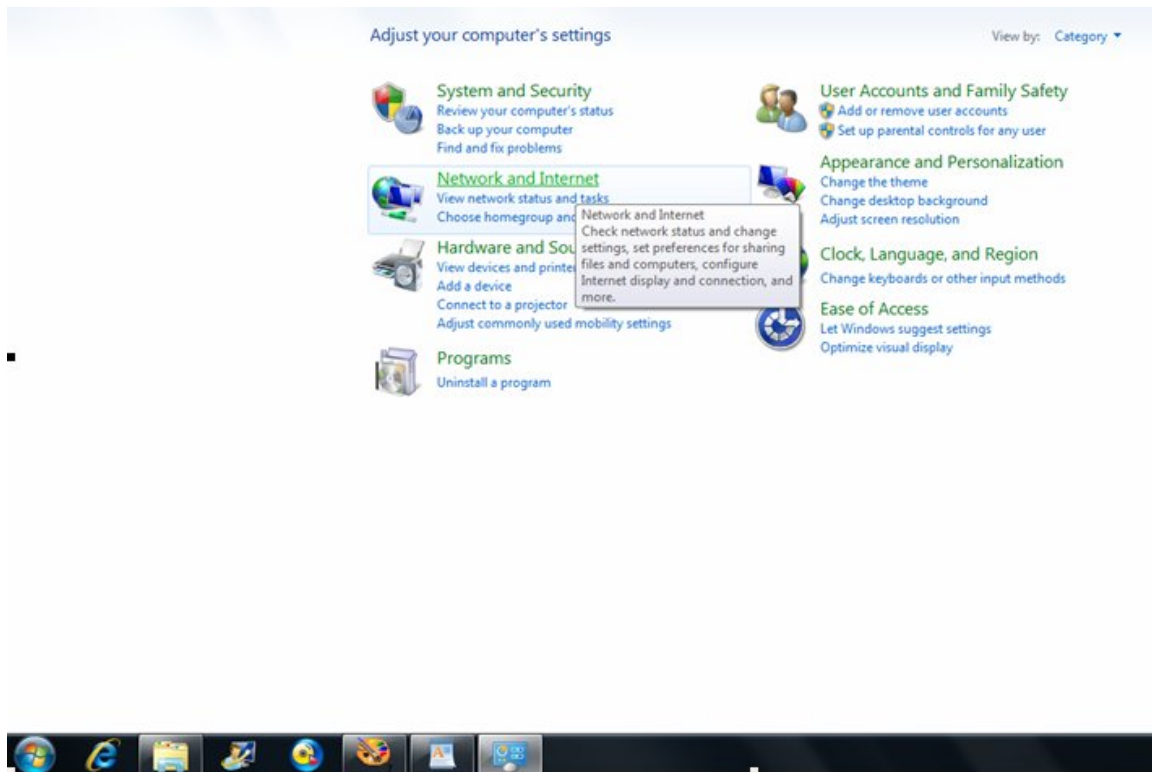


3. Click Install

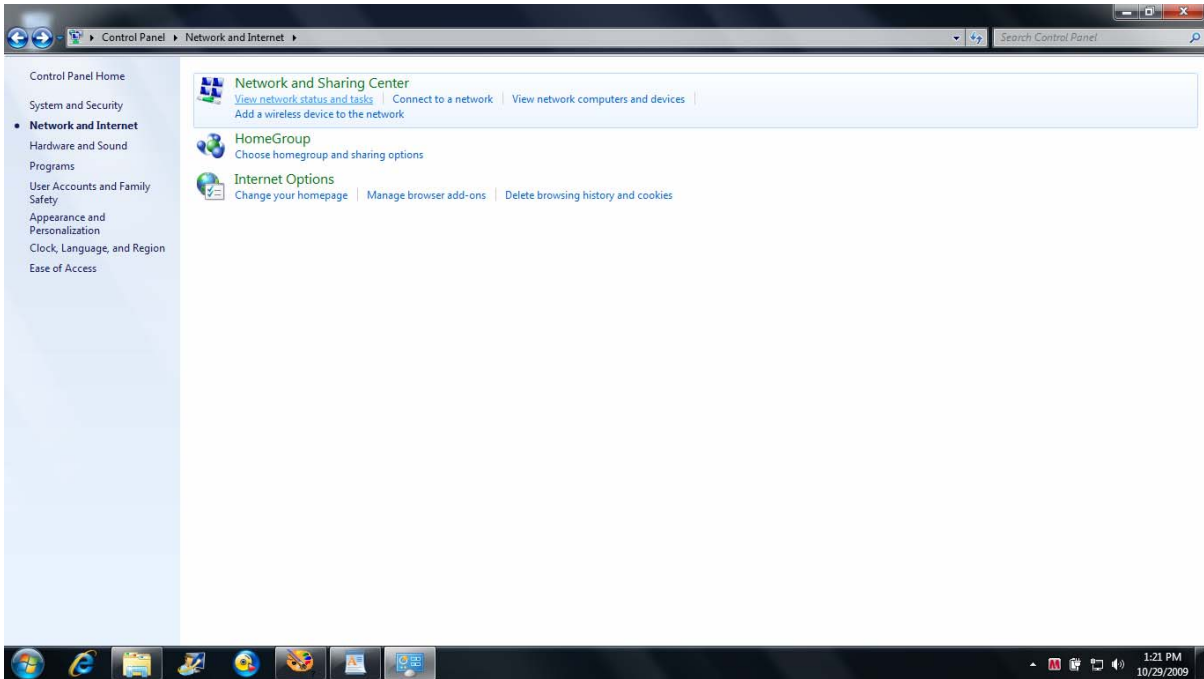




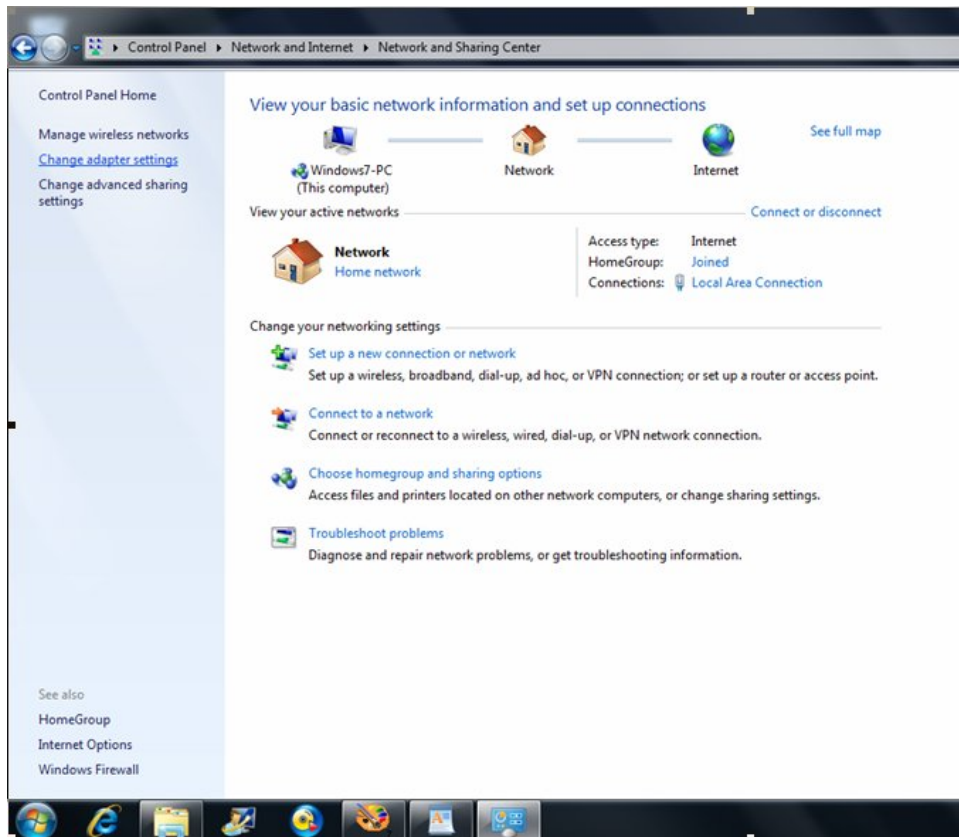
4. Click Start then select Control Panel



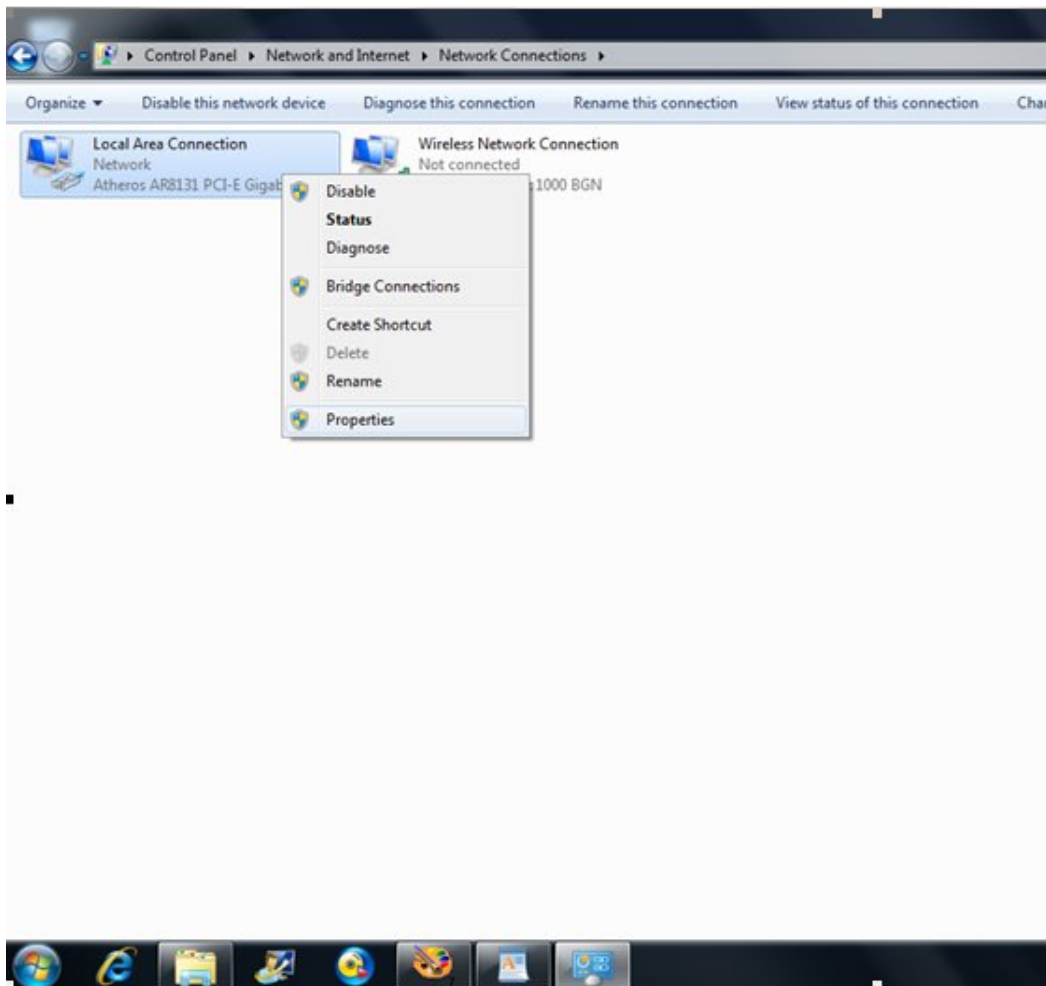
5. Click Network and Internet



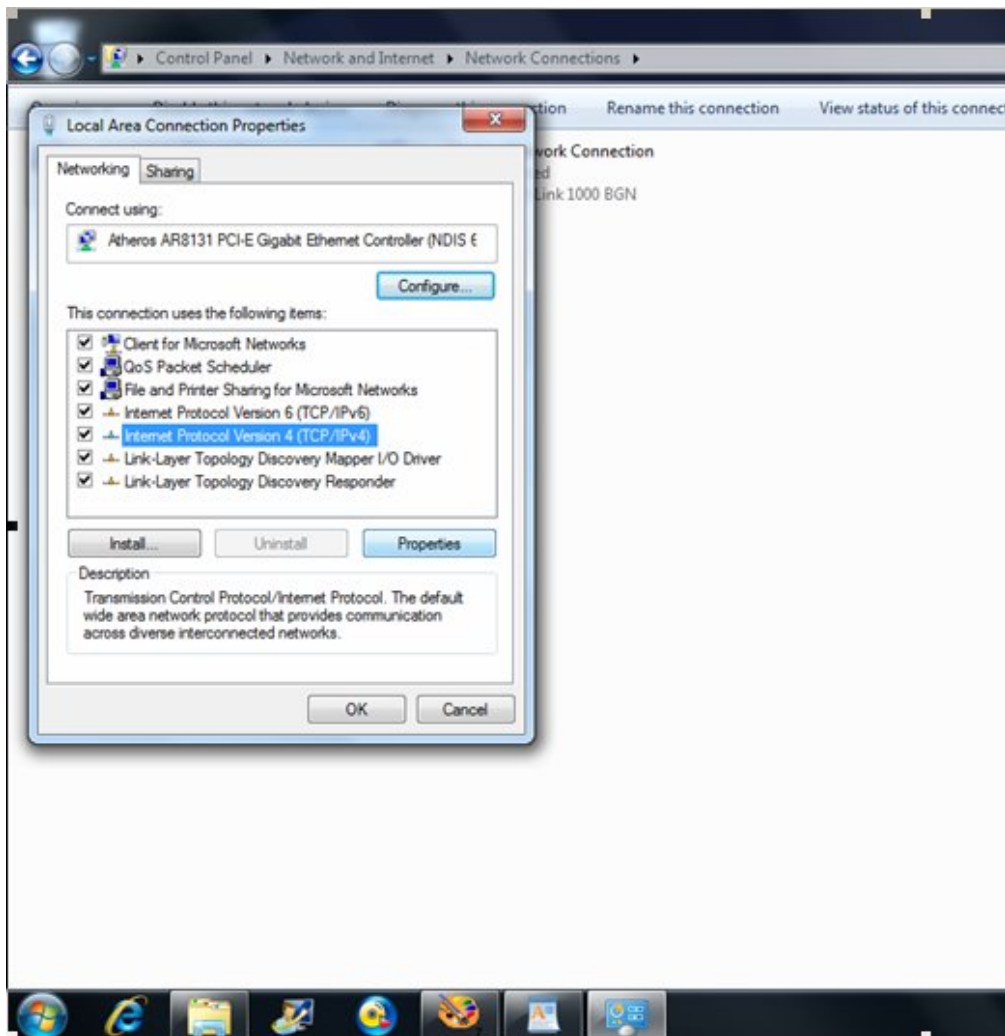
6. Click View Network status and tasks



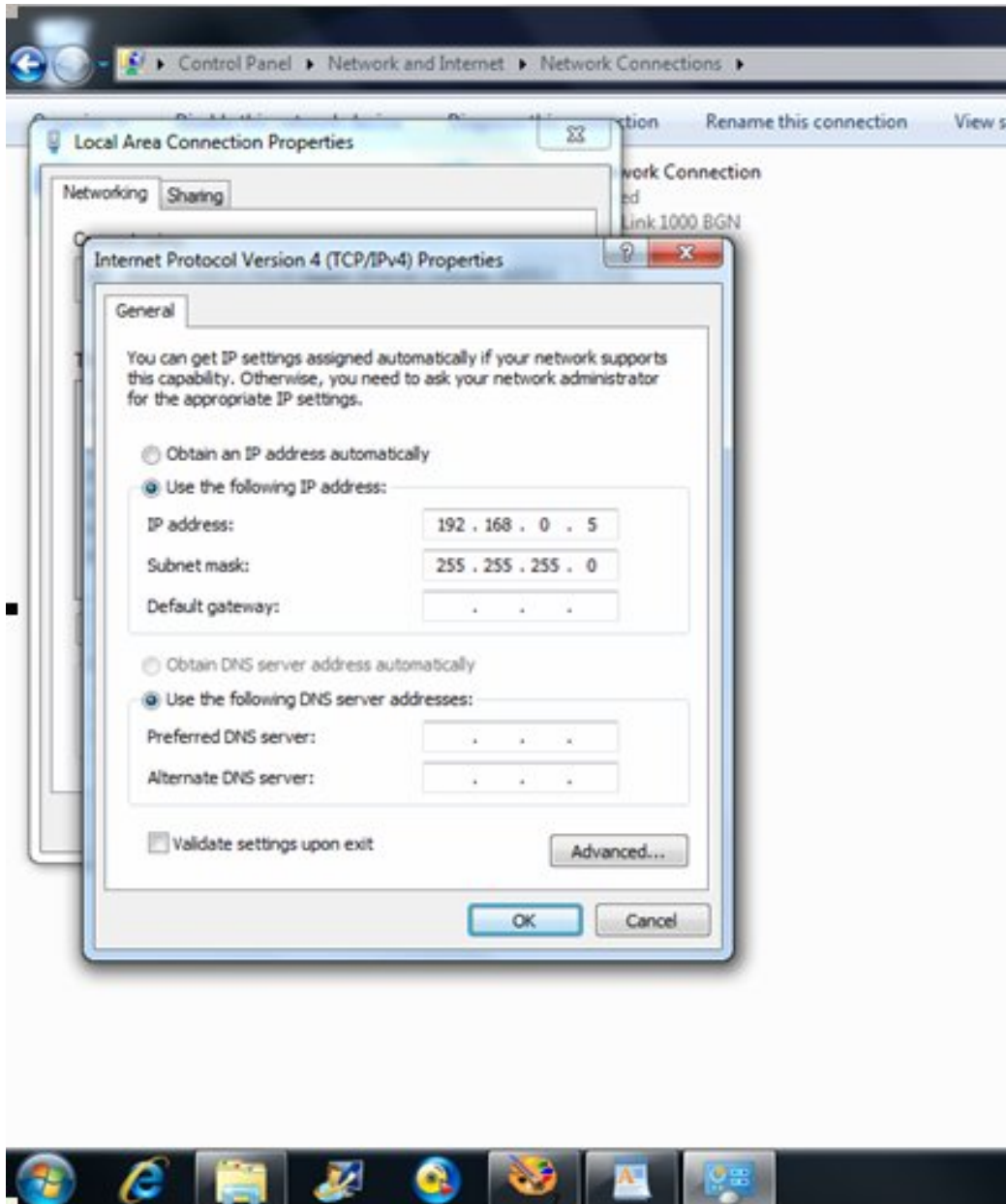
7. On the left choose Change adapter settings



8. Right click on Local Area Connection and choose properties



9. Double click Internet Protocol Version 4



10. Assign the following IP # and then click OK

IP address: 192.168.0.5

Subnet Mask: 255.255.255.0

11. Click on Finishlynx.exe and install