

TRACK AND FIELD TIMING IN THE DIGITAL AGE

YOUR 1 ~ 2 ~ 3 GUIDE TO F(ULLY) A(UTOMATIC) T(IMING)

WHAT IS FULLY AUTOMATIC TIMING?

Fully Automatic Timing – or F.A.T. – is the standard required today by every regulatory body in Track and Field. In general the requirements of an approved F.A.T. system are these:

- 1 The timing must be started automatically by the signal from the starting apparatus ~ usually a gun in Track and Field
- 2 The system must be capable of producing printed images showing the times
- 3 It must be capable of timing to a precision of at least 1/100th second

F.A.T. is mandated for record ratification at all levels, from the International Association of Athletics Federations (I.A.A.F.) to the National Federation of High Schools (N.F.H.S.).

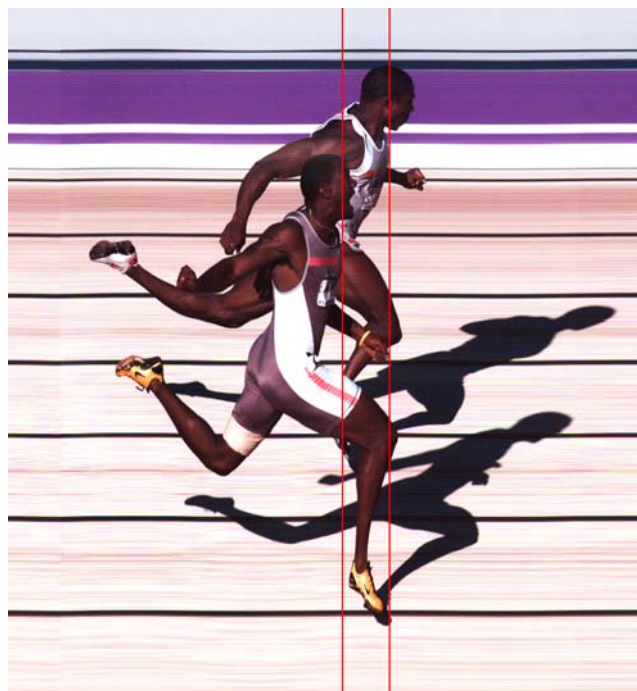
If - and only if - a timing system meets all these requirements, can it be used to ratify applications for new State, National, and International records.

ARE F.A.T. SYSTEMS COMPLICATED?

Absolutely not!

There are only three components to a basic digital linescan F.A.T. system:

- 1 A **Start Sensor** that detects the firing of the gun.
- 2 A **Computer**.
- 3 A digital **Camera** at the finish line.



HOW ACCURATE IS A DIGITAL FAT SYSTEM?

Higher quality digital photofinish and timing systems, like those manufactured in the USA by Lynx System Developers, have built into the camera a digital clock that is accurate to *plus-or-minus one part per million!*

The timing clock is started automatically when the Starter fires his gun. With this incredible level of precision, timing to 1/1000th of a second is child's play.



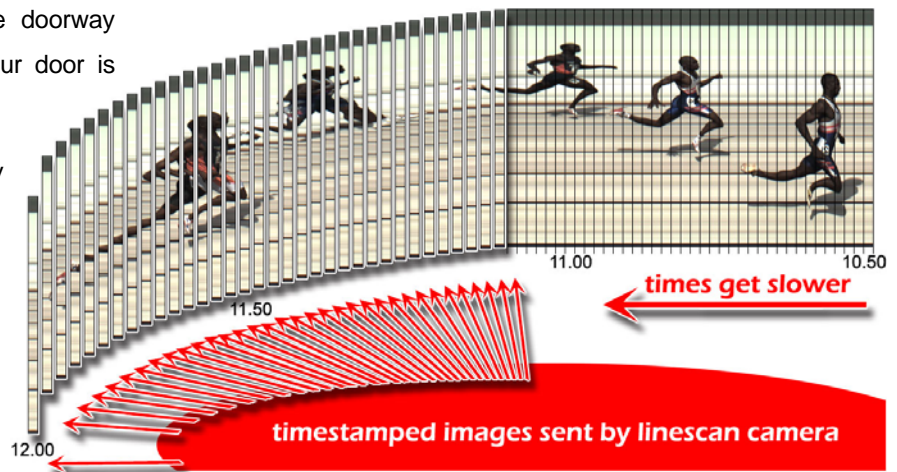
WHAT IS LINESCAN PHOTOGRAPHY?

One way to think of linescan photography is to imagine sitting in a room with the door open a tiny crack, watching someone run past the door. As they run by you will only ever be able to see a thin "slice" of them; however, over a short period of time they will travel past the doorway completely. Now imagine that the crack in your door is aligned perfectly with the finish line.

A linescan photofinish image is actually comprised of a series of incredibly thin individual pictures of the view out to the finish line - and the activity that was taking place at that fraction of a second - placed one next to another - as shown in the diagram.

With a digital system, the specialized linescan computer software assembles these thin

images side by side so that it is easy for the operator to see exactly when each competitor crossed the finish line. Reading a time is as simple as using the mouse to move the cursor to the torso of each athlete - the software displays the time automatically.



WHAT OTHER FEATURES ARE AVAILABLE?

Lynx FAT package solutions offer a range of other benefits:

- 1 Quick and Easy hardware setup.**
 - Unlike any other FAT system, the FinishLynx software can use a remote positioner to adjust the camera placement and auto-align the camera precisely on the finish line.
 - The RadioLynx wireless start technology, that is included with the top-of-the-line systems, means that the days of having to string cable to all the start locations are gone for ever.
- 2 Data Sharing**
 - All Lynx systems have built-in the ability to link the timing system to scoreboards and to event administration software for instant and error-free sharing of data (names and teams, etc.)
- 3 High quality photographic printing**
 - The photofinish image printouts produced by a Lynx FAT System meet all the requirements for Record ratification at all levels of the sport.

WHY CHOOSE A LYNX PACKAGE?

IMPROVED MEET RESULTS

- 1 Fairness.** Coaches and athletes soon learn that results are fair, accurate, and reviewable - there will be no more disputes
- 2 Your meets will run on time** because you do not have to sort out disputes and confusion over lanes and times at the end of every race
- 3 Records will be accurate and ratifiable.** No athletes will be denied recognition of their achievements

IMPROVED FINANCIAL RESULTS

- 1 Better use of limited human resources** - you will not have to find hand timers for every lane
- 2 Cost savings** ~ if you are currently paying a service provider for your meets. You can time your meets yourself and save this expense.
- 3 Raise money for your program** through the sale of the high quality image printouts.