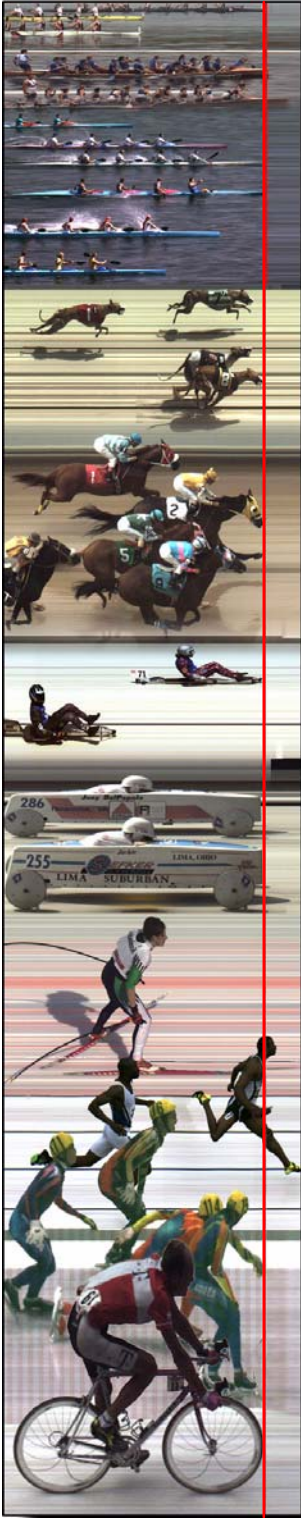


**TEN (or so) QUESTIONS TO DISCUSS WITH US
BEFORE ORDERING A FINISHLYNX SYSTEM**



1. HOW MANY CAMERAS DO I NEED?.....
2. WHAT KIND OF LYNX CAMERA(S)?
BLACK & WHITE?..... COLOR?..... HIGH RESOLUTION?.....
3. HOW WILL I MOUNT THE CAMERAS?
TRIPOD?.....POLE?.....CLAMP?.....OTHER?.....
4. WHAT LENS WILL WORK FOR MY CAMERA?
STANDARD ZOOM? NIKON?.....
5. WILL THE REMOTE CONTROLLED LENS AND POSITIONER BE NECESSARY IN MY SITUATION?.....
6. WHERE WILL I PLACE THE COMPUTERS?
INSIDE TRACK?.....OUTSIDE TRACK?.....
7. HOW MUCH CABLING WILL I NEED TO RUN THIS SYSTEM?
CAMERA (Ethernet 10baseT or 10base2); GUN WIRE.....;
8. WILL I NEED A BATTERY BACK UP SYSTEM?
9. HOW WILL I HANDLE THE FINSHLYNX DATA?
USE LYNX OUTPUT ONLY?..... InterLynx (Track)..... Hy-Tek??.....OTHER?.....
- 10a. WHAT COMPUTER SYSTEM WILL WE USE? Desktop?.....
Laptop?.....HOW MANY COMPUTERS?.....
- 10b. IF WE USE A PC, WILL WE HAVE WINDOWS 9X/OR WINDOWS NT INSTALLED ON THE MACHINE?.....(IF YOU ORDER ETHERLYNX 2000, YOU MUST HAVE WINDOWS NT/9X AND AN ETHERNET CARD INSTALLED. IF YOU WANT TO USE A NOTEBOOK COMPUTER WITH ETHERLYNX 2000, YOU SHOULD CHECK WITH LYNX FIRST FOR RECOMMENDED MODELS.)
- 10c. DO WE HAVE ENOUGH SERIAL PORTS ON OUR COMPUTER?
CAPTURE BUTTON?..... DATABASE?..... SCOREBOARD?.....