

# FieldLynx™ Installation Quick Start

## Install FieldLynx onto a handheld device

You must have the following items before proceeding with these installation instructions:

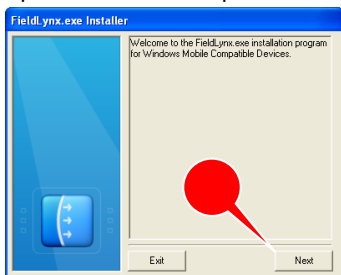
- Handheld device running the Windows CE™ Operating System 2003 or later.
- FieldLynx Installation software either on a CD or on an accessible network drive.
- A computer with the Microsoft ActiveSync® Manager software installed. If you have not done so already, install this application now onto a computer.
- The ActiveSync® cable or cradle that came with your handheld device.
- An 802.11b Wireless Access point connected to your Lynx network.



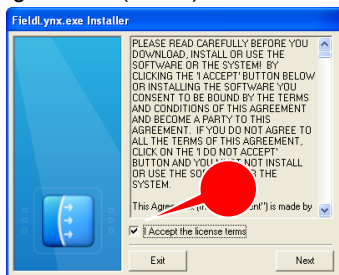
### Step 1: Installation

1. Connect your handheld device to your computer with the cable supplied.
2. Start the Microsoft ActiveSync software on your computer.
3. Locate the FieldLynx for Pocket PC installation program on your computer. It will be named **FLPPC\_”x\_xx”.exe** (where “x\_xx” is the current version number.)

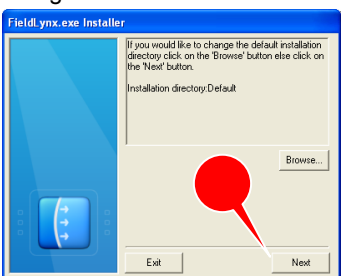
4. Double click on FLPPC\_x\_xx3.exe. Tap **Next** on the Setup Screen



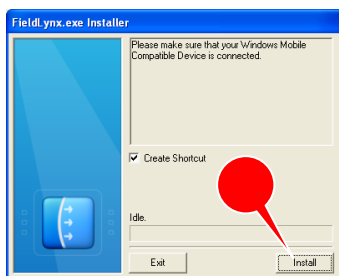
5. Accept the End User Licence Agreement (EULA)



6. Click **Next** and accept all the default settings



7. Finish by clicking on the **Install** button.



8. You can launch FieldLynx on your Pocket PC directly from the Installer, or you can follow the next steps.

9. Turn on the Pocket PC device.

10. Tap the **Start** icon and Select **Programs**
11. From the **Programs** Folder, tap  to open FieldLynx.

### Step 2: Configuring Database and General Preferences

Make sure that your Wireless Access point is connected to your results network via an Ethernet hub and powered on. Using the configuration software that came with your Access Point set the SSID to “Lynx” and the IP address to the default setting of 192.168.0.30. To configure your handheld units follow the instructions below.

Example shown is for an iPAQ, but the same principles apply to all models. If you have another model, ensure that you select the Lynx Network when prompted, and set the IP address of your handheld in the range suggested. If you choose not to use the default settings, consult your Network Administrator for guidance.

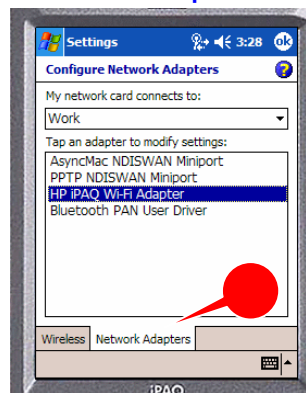
1. Select **iPAQ Wireless** from the **Start** menu.



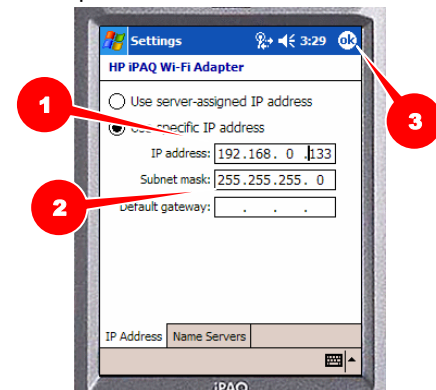
2. This screen will appear. Tap on the **Settings** button for **WiFi**



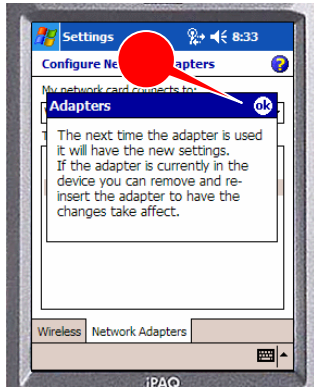
3. Tap on the **Network Adaptors** tab at the bottom of the screen and select the **iPAQ WiFi adaptor**



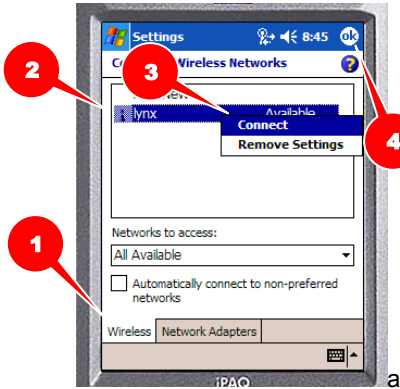
4. Assign a unique **IP address** to this unit in the space provided. We recommend using one in the range 192.168.0.130 – 192.168.0.140. Set the **subnet mask** to 255.255.255.0 Tap on **ok**



5. Tap on the **ok** button in the top right of the screen.



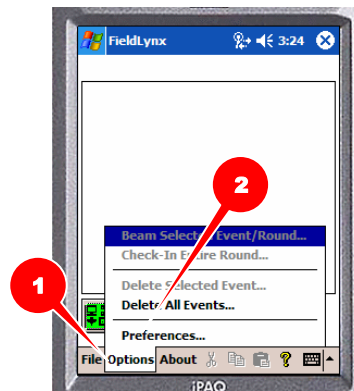
6. Tap on the **Wireless** tab and **tap and hold** on the **Lynx** Network. Select the **Connect** option. Tap **ok** to confirm, and **ok** again.



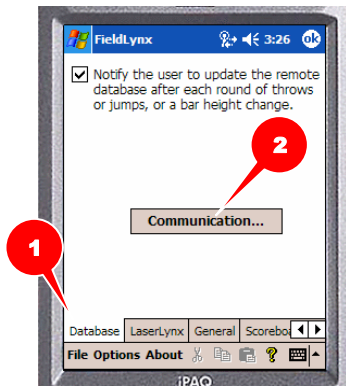
7. Open FieldLynx by tapping on the **FieldLynx** icon from the **Start** menu.



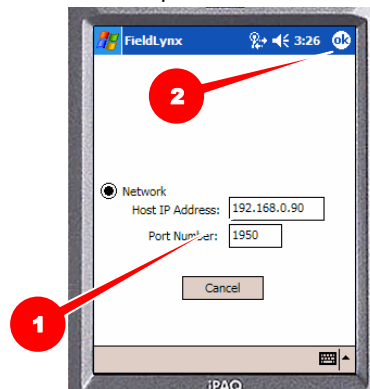
8. In the main screen Tap on the **Options** menu and select **Preferences**.



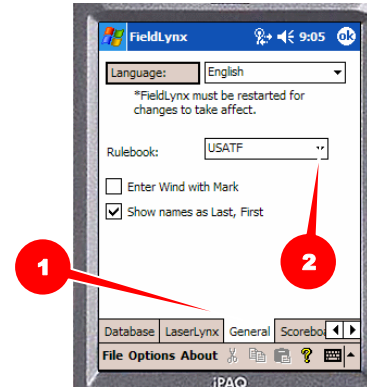
9. Tap on the **Database** tab and Tap the **Communication** button



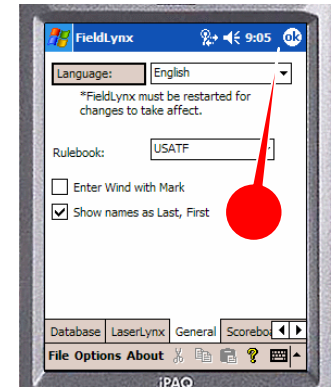
10. Confirm the Default **IP address** of the NetExchange computer is already entered. Tap on **ok**.



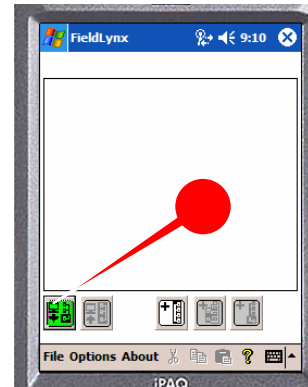
11. Select the **General** tab and confirm settings for **Rulebook**, etc. For instructions on setting up **Wind Gauges and Scoreboards**, see the **Peripherals Quick Start Card**.



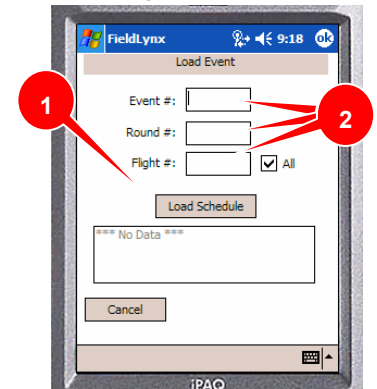
12. Tap on **ok** to return to the FieldLynx Main Screen



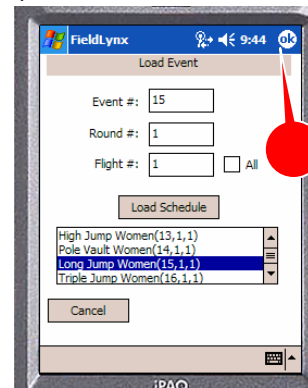
13. Tap on the **Get Events** icon.



14. Tap on the **Load Schedule** button, or enter the **Event, Round** and **Heat** number to get events



15. Tap on **ok**



16. FieldLynx will download the event.



17. See Individual Event Quick Start Guides for Event Administration.