



# SHORT TRACK SPEED SKATING

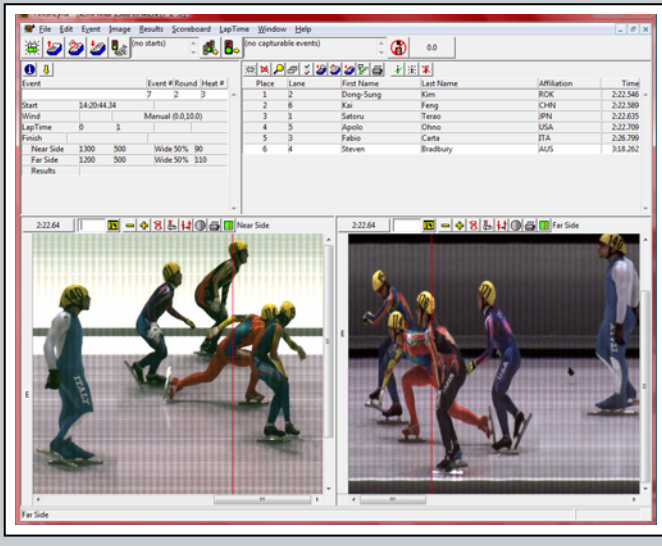
LYNX SYSTEM DEVELOPERS, INC.

SILVER PACKAGE

## SILVER PACKAGE

The Lynx Short Track Silver Package adds a second EtherLynx 2000 Camera to the configuration of the Bronze Package. With the addition of the second camera, photo finish operators have the luxury of a reverse angle image to aid in race analysis when one competitor is obscuring the skate of another. It also adds the convenience of a remote camera positioning platform for precise alignment of the far side camera – directly from the software interface.

The FinishLynx software also allows for automatic time tracking between both cameras on the screen AT THE SAME TIME. This makes evaluation of obstructed athletes easy and fast - as the image below illustrates.



## TWO SIDES TO EVERY RESULT

The Silver Package maintains the tradition of Lynx packages by providing everything you need to achieve a two camera, reverse angle, photo finish and timing solution. You will get the cameras, lenses, through the lens viewers, and even a remote positioning platform for easy and precise alignment, FinishLynx software, a start sensor with all necessary cables, and even a tripod and all the other camera mounting hardware: a truly comprehensive and powerful technology implementation.

The configuration of a primary color camera and a monochrome reverse angle (far side) camera, is perfectly suited for high-level events where you need the ability to time races with confidence, even when the primary photo finish camera view is blocked by another athlete. This is easy, due to the multiple camera time-tracking feature of the software.

## COMPONENTS

- **Primary Camera** - Enhanced-resolution (• 2000 frames/second), timing enabled, Color **EtherLynx Fusion**
  - Nikon Compatible 30mm f/1.4 lens
  - F-mount through-the-lens alignment viewer and remote iris control
- **Reverse Angle Camera** - monochrome
  - F-mount through-the-lens alignment viewer
  - Remote Control Camera Positioning platform
- Mounting hardware with precision adjustment for both cameras and tripod
- All-inclusive Camera and Start Cable sets
- All necessary network cables and hub
- Built-in interface to scoreboards and wind gauges
- **FinishLynx 32** - Multi Language\* Photo Finish Software
- Custom Carrying Case

\* See Website for current listing. FinishLynx available in English, Spanish, French, Arabic, German, Italian, Korean, Portuguese (Brazil), Russian, Swedish, Finnish, Chinese (Simp.), Chinese (Trad.), Japanese

## FEATURES

- Reverse Angle camera, networked with the primary camera, for rapid accurate evaluation of partially obscured athletes
- Software controlled camera positioning platform that will allow an operator to micro-position the camera on the far side of the track for supreme accuracy – without leaving their computer.
- Tripod and geared mounting head for reverse angle camera for easy setup.
- Fully upgradeable to integration with manual or transponder-based lap counting and split times.



# THE LYNX SILVER PACKAGE



The key to accurate photo finish and timing is high quality images taken by cameras that are precisely aligned with the finish line. The Lynx Silver Package makes this easy thanks to a combination of factors. Underlying everything is the EtherLynx 2000 camera that has incredible light sensitivity that results in high quality images at low light levels and high scan rates – even as fast as 2000 frames per second. Completing the picture is the combination of the custom designed and built precision through-the-lens viewer and the Nikon compatible lenses. The Lynx TTL viewer makes rapid and highly accurate camera positioning simple.

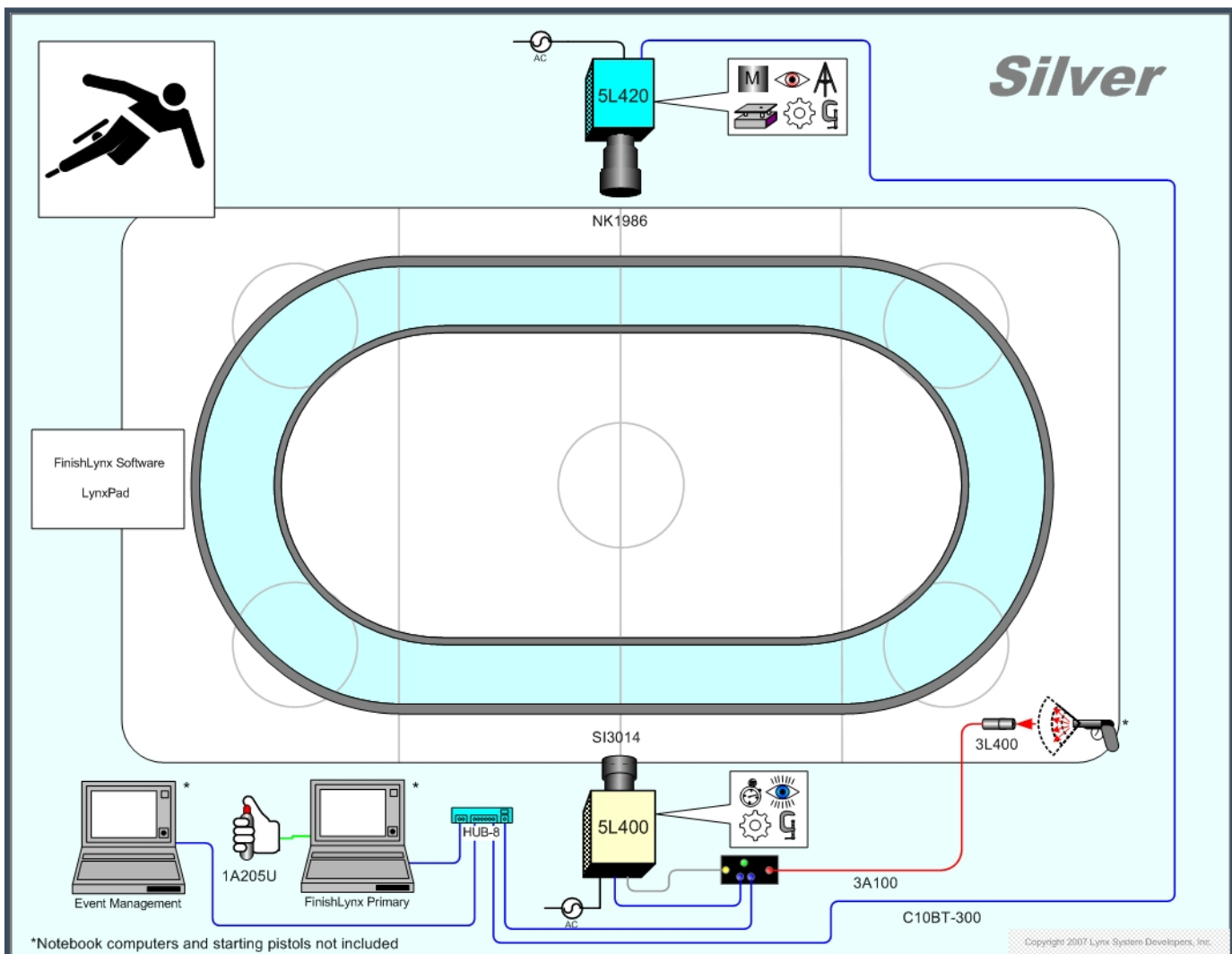
At the heart of the SILVER PACKAGE is the EtherLynx 2000 digital photo finish camera, which uses the same data transmission protocol as the internet itself. With this popular and proven technology powering the communication between the photo finish camera and the FinishLynx computer, and more than a decade of use in the field, Lynx technology is rock-solid.

Because of the long-standing Lynx tradition of providing their customers with access to the latest software upgrades, you can be confident that as time goes by you will continue to feel good about your decision. Lynx will always provide you with the very latest advances in digital timing. In addition, because of the modular design of Lynx technology, you can add enhancements to your timing system at any future time as your needs grow. Add to the equation the quality of Lynx service and technical support around the globe, and it is easy to understand why so many venues are now featuring Lynx technology.

When you choose a Lynx packaged solution, you can be safe in the knowledge that you have made an intelligent investment. You will have everything you need to produce and distribute accurate results. What is more, you will have the ability to distribute those results to a huge range of scoreboards from many manufacturers, so many customers are able to integrate their existing



IT IS SO SIMPLE ~ WHEN YOU SEE THE FINISHLINE YOUR CAMERA IS ALIGNED!

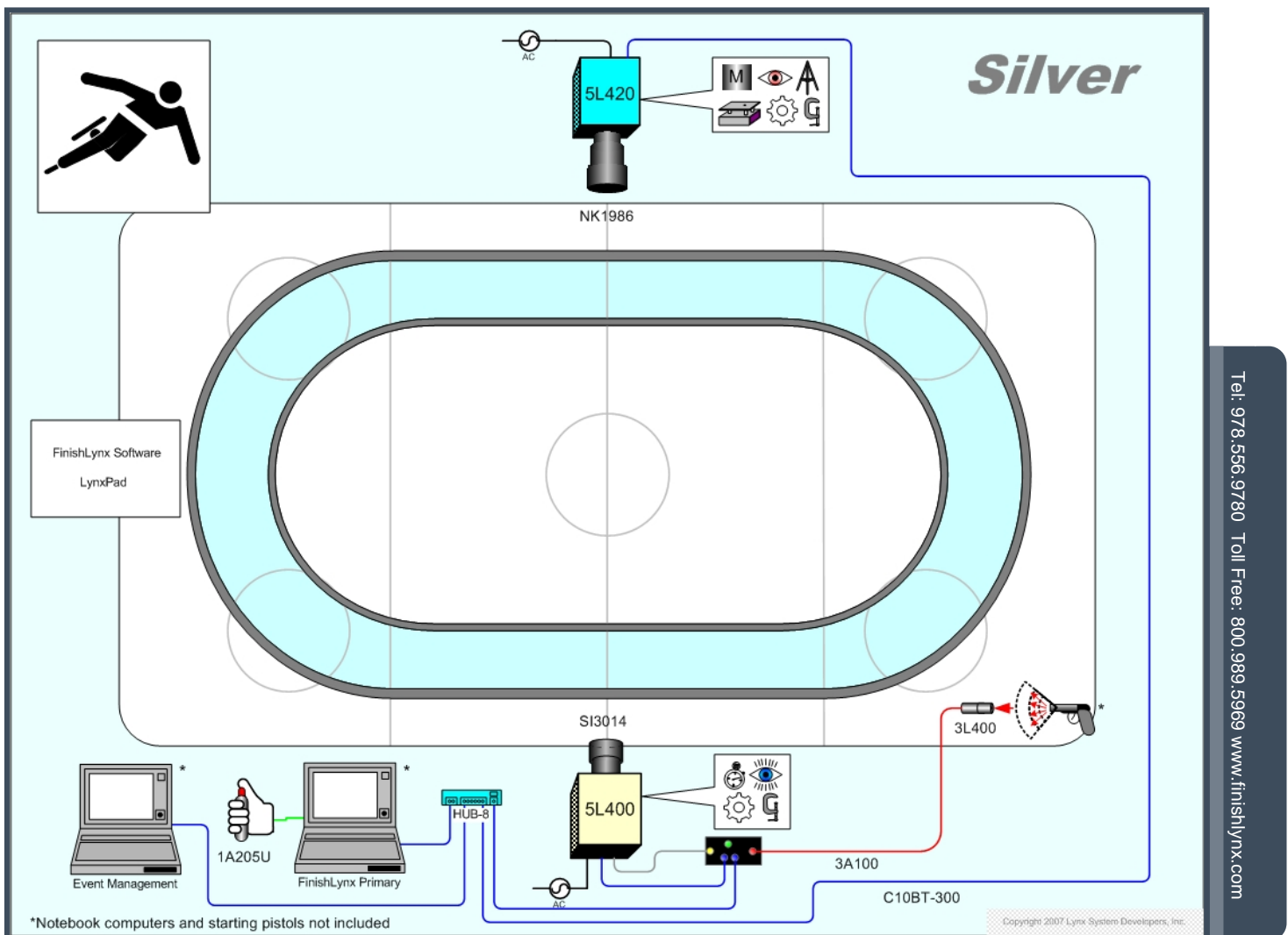


\*Notebook computers and starting pistols not included

Copyright 2007 Lynx System Developers, Inc.

Tel: 978.556.9780 Toll Free: 800.989.5969 [www.finishlynx.com](http://www.finishlynx.com)

hardware.



Tel: 978.556.9780 Toll Free: 800.989.5969 www.finishlynx.com

\*Notebook computers and starting pistols not included

Copyright 2007 Lynx System Developers, Inc.