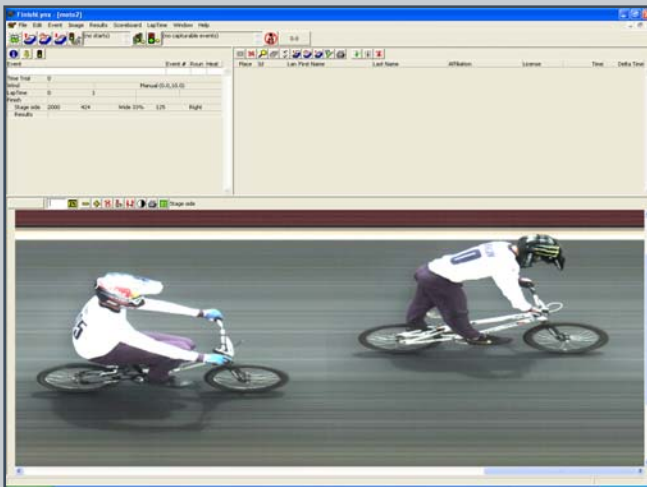




## SILVER PACKAGE



The BMX Racing Silver Package contains two major improvements over the entry-level Bronze system: a color camera and wireless start system. The **EtherLynx FUSION** is one of the most powerful and versatile photo finish cameras available in cycling today. It captures rich, full-color images at up to 2,000 frames per second and 1,000 pixels of vertical resolution at its standard configuration. And with the option for digital zoom, wireless adapters, and FLEX resolution, your Fusion camera can be upgraded as your needs change so you never outgrow your investment.

In addition to the full-color Fusion camera, the Silver Package also includes the RadioLynx wireless start system. RadioLynx allows the FinishLynx system to wirelessly interface with your third-party starting gate, eliminating the need to run start-signal wires across the length of the track. And of course, the package also includes the IdentiLynx head-on video camera and all the other necessary mounting hardware, cables, software, and technical support you need to run a UCI-approved photo finish system at your next race.

## COMPONENTS

- **Camera - EtherLynx Fusion**, color, timer-enabled, 2,000 frames/second, 1,000 pixel image height
  - Color F-mount(Nikon compatible) through-the-lens alignment viewer and remote iris control
  - Nikon-compatible 24-70 mm f/2.8 zoom lens
- **Video - IdentiLynx**, 30 frames/second, head-on 2-D video, full color for easy rider identification
  - 5-50mm f/1.3 CS-mount lens
- Super Head Clamp, Geared Mounting Head, and Tripod for precision adjustment
- All-inclusive Camera Cable set with Capture Button and USB-to-Serial Converter
- RadioLynx Wireless Start System & accessories
- **LynxPad** – Meet management software
- **FinishLynx 32** – Multi-language\* photo finish software.
  - Time Trial Plug-in, RadioLynx Plug-in

\* See Website for current listing. FinishLynx available in English, Spanish, French, Arabic, German, Italian, Korean, Portuguese (Brazil), Russian, Swedish, Finnish, Chinese (Simp.), Chinese (Trad.), Japanese

## SILVER PACKAGE FEATURES

- The EtherLynx Fusion camera provides full-color images for easy rider identification on a crowded track
- The RadioLynx wireless start system sends your Lynx start signal wirelessly to the third-party starting gate and eliminates the need for long, bothersome cables.
- The building-block nature of Lynx packages means you can easily enhance your existing system at any time by adding any of our hardware or software upgrades.

## SILVER PACKAGE BENEFITS



The Silver Package contains everything you need to produce precise, full-color results for BMX races of any class or size. It integrates two types of cameras, wireless start, event software, and all the other accessories you need for FAT timing at a UCI-sanctioned BMX race. Our technology brings unwavering reliability to an otherwise unpredictable sport – that's why it has been used in professional cycling for over a decade. Lynx photo finish systems are the smarter alternative to transponders and photocells because you don't need to struggle with organizing tags or adjusting impulse durations. With FinishLynx, you can record times to 1/1000<sup>th</sup> of a second, generate high-resolution images, and print sophisticated race results right from your computer.

## THE LYNX SILVER PACKAGE

One key addition to the Silver Package is the EtherLynx Fusion camera. The Fusion produces full-color photo finish images at 2,000 frames/second and a 1,000-pixel vertical resolution – that means you can record finishes on a full-width BMX course without having to compromise image quality. The camera can also operate from a 12-volt battery power source and even supports an upgrade for fully-wireless operation. When you combine its high-resolution images with time-synced IdentiLynx video, it produces irrefutable photo finish results – no matter how close the finish.

The IdentiLynx video camera captures head-on video as riders cross the finish-line and also comes standard in the Silver Package. This 2-D camera not only satisfies the UCI camera requirement, but is also a great secondary source for rider and number-plate verification. The IdentiLynx video can quickly and accurately confirm your photo finish results because both cameras are time-synced through your FinishLynx software; on the other hand, transponder and photocell discrepancies must be reviewed with an independent video system.



The Silver Package also includes the RadioLynx wireless start system, further adding to its ease of use for event operators. RadioLynx allows your FinishLynx system to communicate wirelessly with any number of third-party BMX starting gates so you can operate one seamless network throughout the entire course. It also means that you no longer have to drag starting cables hundreds of meters across the track.

The Silver Package combines all these photo finish components, along with the other cables, accessories, and software you need for professional-level FAT Timing. Why struggle with outdated timing equipment when you can make the switch to Lynx?

