



BRONZE PACKAGE

Lynx has expanded our family of packaged solutions to include the newest event in Olympic Cycling: BMX. Our photo finish and timing systems have been used for over a decade at the highest levels of Road and Velodrome cycling, and now we're proud to offer Lynx packages designed specifically for the needs of BMX racing. With Bronze, Silver, and Gold systems available, we can help you customize a start-to-finish solution for any level of competition.

The BMX Racing Bronze Package is a well-equipped entry-level solution that integrates high-speed photo finish images and 2-D video for accurate, real-time results. The high-resolution **EtherLynx 2000+** photo finish camera produces rich line-scan images and precision timing to more than 1/1000th of a second. Additionally, the **IdentiLynx** color video camera captures time-synced finish-line video for easy rider/number identification.

Finally, our powerful **FinishLynx32** computer software allows you to capture, verify, and print your results with a few clicks of the mouse. This camera/software combo, along with the other FAT accessories, makes the Bronze Package the most capable entry-level BMX solution available.



© Fabrizio Tarizzo

COMPONENTS

- **Camera - EtherLynx 2000+**, 1,000 frames/second fully upgradeable, monochrome, timer-enabled
 - F-mount(Nikon compatible) through-the-lens alignment viewer and remote iris control
 - Nikon-compatible 24-70 mm f/2.8 zoom lens
- **Video - IdentiLynx**, 30 frames/second, head-on 2-D video, full color for easy rider identification
 - 5-50mm f/1.3 CS-mount lens
- Super Head Clamp, Geared Mounting Head, and Tripod for precision adjustment
- All-inclusive Camera cable set with Capture Button and USB-to-Serial Converter
- Custom carrying case
- **LynxPad** – Meet management software
- **FinishLynx 32** – Multi-language* photo finish software.
 - Time Trial Plug-in for FinishLynx

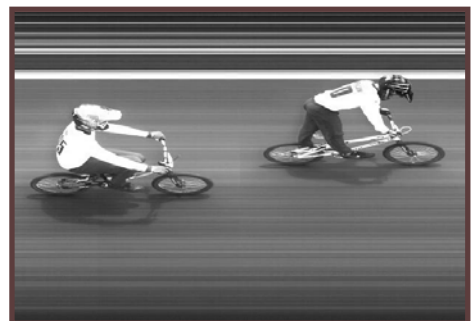
* See Website for current listing. FinishLynx available in English, Spanish, French, Arabic, German, Italian, Korean, Portuguese (Brazil), Russian, Swedish, Finnish, Chinese (Simp.), Chinese (Trad.), Japanese

BRONZE PACKAGE FEATURES

- Monochrome digital images taken at up to 1,000 frames per second provide accurate, indisputable photo finish results no matter how close the finish.
- IdentiLynx video time-syncs with your photo finish images for full-color, head-on rider/number verification.
- The “building block” nature of Lynx packages means that you can add hardware and software upgrades to your existing system at any time.

BRONZE PACKAGE BENEFITS

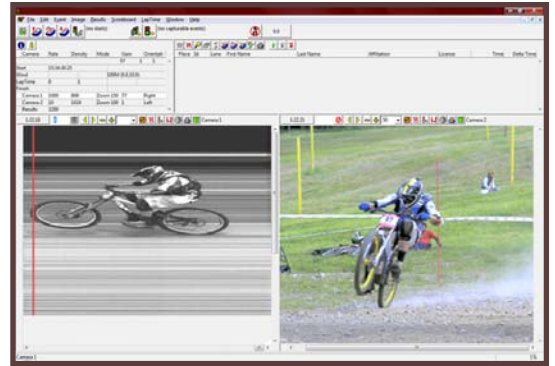
The **EtherLynx 2000+** photo finish camera can capture high-speed images up to 2000 frames per second and timing to more than 1/1,000th of a second. This linescan technology is ideal for BMX racing because it records the precise millisecond when the rider's tire crosses the finish-line. While transponder tags have been popular in the past, they're generally fastened on the bike's fork - several inches behind the true front of the tire. As a result, the UCI rulebook states that photo finish systems shall take priority over tags for all time trials, qualifications, and Finals (**6.1.024**). So while FinishLynx can interface with transponders if necessary, cycling officials will always prefer the accuracy and tangibility of time-stamped photo finish images – at every level of competition.



THE LYNX BRONZE PACKAGE

The biggest advantage of Lynx BMX packages is their seamless integration of hardware and software across a single network. FinishLynx software integrates your start signal, color video capture, and photo finish camera into one easy-to-use computer interface. Because the UCI also requires a “front on” video to help with rider identification (6.1.019), the Bronze Package includes the IdentiLynx full-frame video camera. This color camera records at up to 30 frames per second and automatically time-syncs the head-on video with your photo finish images.

The adjacent picture is a sample FinishLynx screenshot showing the EtherLynx 2000+ and IdentiLynx camera combination found in the Bronze Package. With these time-synced cameras, you can click on any rider and see the video frame (and precise time) when they crossed the finish-line for quick and easy identification. The software is not only configurable for different stages of competition, but can also interface with countless other components like scoreboards, transponders, and additional cameras.



The Bronze Package is a simple, all-inclusive system that's not only easy to operate, but portable enough to travel between venues. The EtherLynx and IdentiLynx cameras, Lynx software, Capture Button/cables, and mounting hardware all come standard. The through-the-lens viewer and high quality Nikon-compatible zoom lens make camera set up fast and easy— and the Lynx carrying case allows for easy transportation and setup. All you need is a laptop and riders to begin using your system. And nothing you buy from Lynx will ever go to waste: the camera, software, and other accessories aren't just key components for the Bronze Package, but the entire family of Lynx technology. If your needs change, you can simply add new features like software plug-ins or wireless capability. Your Lynx system is a long-term investment that's designed to grow with your needs.

