



FinishLynx Sports Timing Product Catalog

December 2019

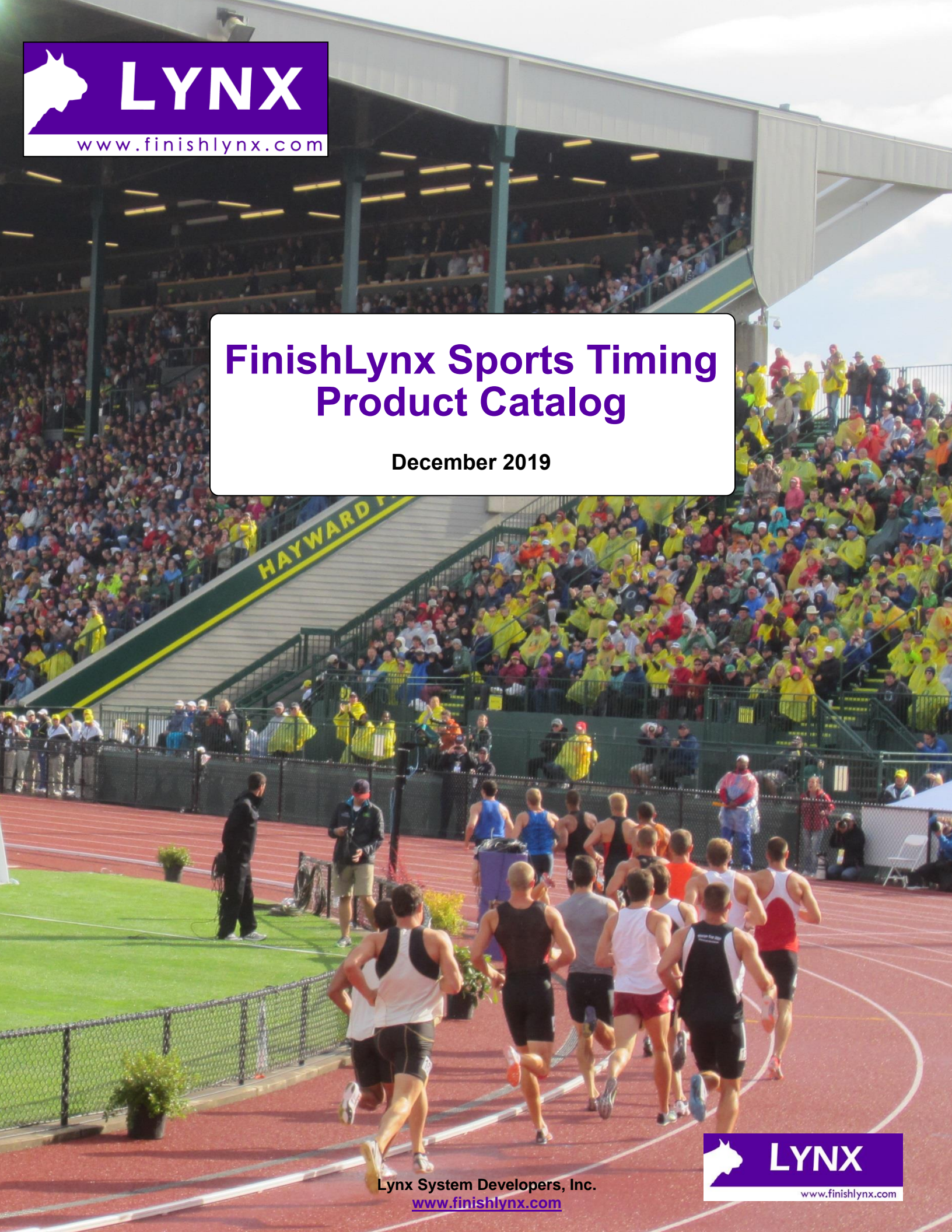
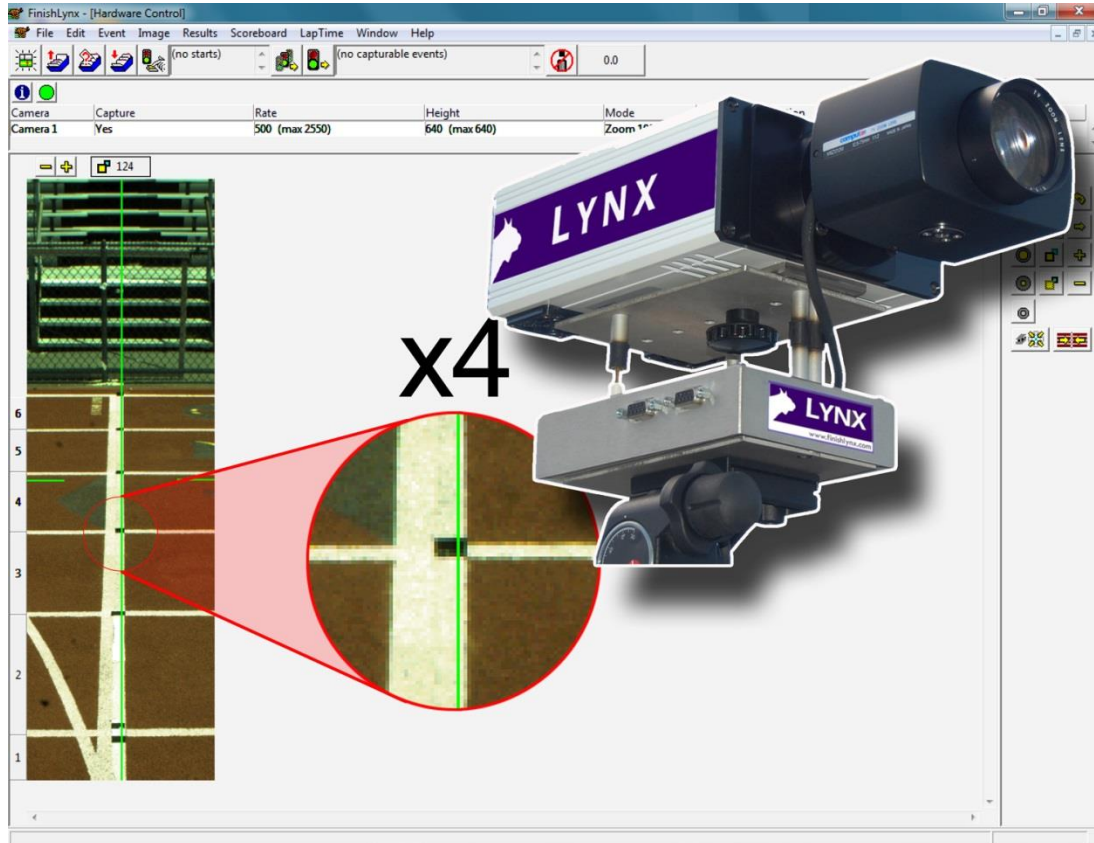


Table of Contents

EtherLynx Vision	5
EtherLynx Vision Pro	9
EtherLynx Pro	10
EtherLynx Fusion	13
EtherLynx 2000	14
IdentiLynx	16
IdentiLynx	16
Software	18
FinishLynx	18
Meet Management	20
Lens Mounts & Lenses	21
Camera Lens Mounts	21
CS-Mount Lenses	24
C-Mount Lenses	24
F-Mount Lenses	26
Camera Mounting Equipment	30
Starting Equipment	34
Electronic Start	34
RadioLynx	34
Photo Cells	39
Wind Gauges	42
Cables	45
Ethernet	45
XLR/Start	46
Misc	47
Power	49
Service	50
ReacTime	51
ReacTime Training	51
ResulTV	58
FieldLynx	59
LaserLynx	61
Lap & Split Timing	63
Manual Split Timing	63
Active Transponders	65
Passive Tags	66

Timing Synchronization	70
Displays.....	71
LED.....	71
Mounting.....	77
Protective Cases	79
Computers & Computer Peripherals.....	80
Networking Hardware.....	83
Clothing	85
Complete Packaged Solutions	87
Athletic.....	87
Field Events.....	88
IdentiLynx	89
ReactTime	90
ReactTime Training	91
Speed Skating	92
Cycling.....	93
Rowing.....	95

EtherLynx Vision



Part Number: **5L500**

EtherLynx Vision High Sensitivity, Color Camera, 2D Preview

PRODUCT CATEGORY: ETHERLYNX VISION

Full Product Description:

Vision High Sensitivity Color Camera; Max 1D Scan Rate of 1000fps and 2D Preview



<http://www.finishlynx.com/archive/catalog/images/5L500.jpg>

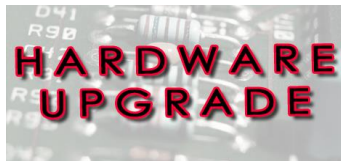
Part Number: **5LBatt**

Internal Camera battery for Vision series

PRODUCT CATEGORY: ETHERLYNX VISION

Full Product Description:

Internal battery pack allows the camera to withstand power loss



<http://www.finishlynx.com/archive/catalog/images/5LBatt.jpg>

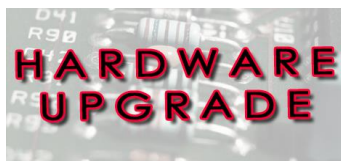
Part Number: **5LLevel**

Internal Camera level function for Vision series

PRODUCT CATEGORY: ETHERLYNX VISION

Full Product Description:

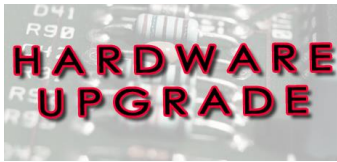
Monitor the camera's level and orientation from FinishLynx software



<http://www.finishlynx.com/archive/catalog/images/5LLevel.jpg>

Lynx Catalog

Part Number: **5LEF**



<http://www.finishlynx.com/archive/catalog/images/5LEF.jpg>

Electronic Filter Option for Vision series

PRODUCT CATEGORY: ETHERLYNX VISION

Full Product Description:

Electronically enable/disable low-light filters from FinishLynx software

Part Number: **5LLUX4**



<http://www.finishlynx.com/archive/catalog/images/5LLUX4.jpg>

LuxBoost™ Boost Level 4 for Vision Series

PRODUCT CATEGORY: ETHERLYNX VISION

Full Product Description:

Amplifies available light for better race images in low-light conditions

Part Number: **5LLUX8**



<http://www.finishlynx.com/archive/catalog/images/5LLUX8.jpg>

LuxBoost™ Boost Level 8 for Vision Series

PRODUCT CATEGORY: ETHERLYNX VISION

Full Product Description:

Amplifies available light for better race images in very low-light conditions

Part Number: **LuxUpgrade8**

We are sorry
but there
is currently
no image
available for
this product

<http://www.finishlynx.com/archive/catalog/images/LuxUpgrade8.jpg>

LuxBoost™ Upgrade for Vision Series Lux4 to Lux8

PRODUCT CATEGORY: ETHERLYNX VISION

Full Product Description:

Amplifies available light for better race images in very low-light conditions

Part Number: **5LGPS**

We are sorry
but there
is currently
no image
available for
this product

<http://www.finishlynx.com/archive/catalog/images/5LGPS.jpg>

Internal GPS Synchronizer for Vision Series Cameras

PRODUCT CATEGORY: ETHERLYNX VISION

Full Product Description:

Includes Antenna

Part Number: **Int-DEC-004**

We are sorry
but there
is currently
no image
available for
this product

<http://www.finishlynx.com/archive/catalog/images/Int-DEC-004.jpg>

Internal RadioLynx Receiver for Vision Series Cameras

PRODUCT CATEGORY: ETHERLYNX VISION

Full Product Description:

Includes Antenna

Part Number: 5LVDM



<http://www.finishlynx.com/archive/catalog/images/5LVDM.jpg>

Video Display Option for Vision Series

PRODUCT CATEGORY: ETHERLYNX VISION

Full Product Description:

Allows configurable graphics display of scoreboard data via direct HDMI connection

Part Number: 5LVision-EVF1



<http://www.finishlynx.com/archive/catalog/images/5LVision-EVF1.jpg>

3.5" Electronic View Finder Package for Vision Series

PRODUCT CATEGORY: ETHERLYNX VISION

Full Product Description:

Includes View Finder, battery, charger, Power Supply, Clamp and HDMI cable

Part Number: 5LEVF



<http://www.finishlynx.com/archive/catalog/images/5LEVF.jpg>

Electronic View Finder Option for Vision Series

PRODUCT CATEGORY: ETHERLYNX VISION

Full Product Description:

Allows external display to be connected to camera HDMI port for local viewing during alignment.

Part Number: Ext_WiFi



http://www.finishlynx.com/archive/catalog/images/Ext_WiFi.jpg

Ext Wireless for EtherLynx & Vision Cameras includes 8L101

PRODUCT CATEGORY: ETHERLYNX VISION

Full Product Description:

Includes AirLynx Gateway (8L101)

Part Number: Ext_WiFi2



http://www.finishlynx.com/archive/catalog/images/Ext_WiFi2.jpg

Ext Wireless for EtherLynx & Vision Cameras

PRODUCT CATEGORY: ETHERLYNX VISION

Full Product Description:

Does not include AirLynx Gateway (8L101)

Lynx Catalog

Part Number: **VisionPSKit**

We are sorry
but there
is currently
no image
available for
this product

<http://www.finishlynx.com/archive/catalog/images/VisionPSKit.jpg>

Vision Series AC/DC and DC in Power Supply Kit

PRODUCT CATEGORY: ETHERLYNX VISION

Full Product Description:

Includes a 25' AC(110/220) to DC (12vdc, 1.6A) Power Supply and a DC pigtail input assembly

Part Number: **Vision-CVR**

We are sorry
but there
is currently
no image
available for
this product

<http://www.finishlynx.com/archive/catalog/images/Vision-CVR.jpg>

Plexiglass cover for EtherLynx Vision Series

PRODUCT CATEGORY: ETHERLYNX VISION

Call for more information.

EtherLynx Vision Pro

Part Number: **5L600**



<http://www.finishlynx.com/archive/catalog/images/5L600.jpg>

VisionPro High Sensitivity, Color Camera, 2D Preview

PRODUCT CATEGORY: ETHERLYNX VISIONPRO

Full Product Description:

Vision High Sensitivity Color Camera; Max 1D Scan Rate of 3000fps @ 1024 pixels and 2D Preview

Part Number: **5L600Zoom**

We are sorry
but there
is currently
no image
available for
this product

<http://www.finishlynx.com/archive/catalog/images/5L600Zoom.jpg>

5L600 Vertical resolution increase from 1024 to 2048 pixels

PRODUCT CATEGORY: ETHERLYNX VISIONPRO

[Call for more information.](#)

Part Number: **5L6K**

We are sorry
but there
is currently
no image
available for
this product

<http://www.finishlynx.com/archive/catalog/images/5L6K.jpg>

VisionPro Upgrade fps: 3K to 6K

PRODUCT CATEGORY: ETHERLYNX VISIONPRO

[Call for more information.](#)

Part Number: **5L20K**

We are sorry
but there
is currently
no image
available for
this product

<http://www.finishlynx.com/archive/catalog/images/5L20K.jpg>

VisionPro Upgrade fps: 3K to 20K

PRODUCT CATEGORY: ETHERLYNX VISIONPRO

[Call for more information.](#)

Part Number: **5L6K20K**

We are sorry
but there
is currently
no image
available for
this product

<http://www.finishlynx.com/archive/catalog/images/5L6K20K.jpg>

VisionPro Upgrade fps: 6K to 20K

PRODUCT CATEGORY: ETHERLYNX VISIONPRO

[Call for more information.](#)

EtherLynx Pro

Highest Image Resolution

The EtherLynx Professional Digital Photofinish camera can take pictures as fast as 10 000 times a second. This brings a previously unknown level of accuracy and image fidelity to digital photofinish equipment.

Coupled with the ability to transmit image data wirelessly in real time, and to scan at up to 10 000 frames a second from a single line sensor, the EtherLynx Professional range of cameras incorporates the ability to perform digital zoom functions, accommodate both Nikon-compatible lenses and c-mount lenses, and compress data for real time transmission of very high resolution images with no loss of quality.

Camera Specifications

Frame Rate:	3 000 f/s	5 000 f/s	10 000 f/s
Time Resolution:	3/10 000 sec	2/10 000 sec	1/10 000 sec
Sensor Type:	Single Line CCD		
Max Pixels:	1350 (Standard) ~ 4000 (Optional Digital Zoom)		
Digital Zoom:	up to 4x (Standard) ~ up to 12x (Optional Digital Zoom)		
Gamma Correction:	In Hardware		
Image Compression:	Real-Time Lossless. Typically >5x		
Network Connectivity:	100Mbps Ethernet (802.3) Optional Wireless Ethernet 11 - 54Mbps Wi-Fi (802.11b/g)		
Time Base:	1ppm Temperature Compensated Crystal Oscillator		
Lens Mount:	C-mount or F-mount		
Through the Lens Viewer:	Optional on F-mounts		
Remote Control Lens:	Optional on C-mount (zoom/focus/iris) or F-mount (iris only)		
Power Input:	12VDC or 100-240VAC with included adaptor		
Remote Control Positioner:	Optional on all models		
Options	Auto-Capture, LapTime, Remote Control Protocol, Virtual Photo Cell.		
Physical (w/o lens)	size: 20cm x 7.5cm x 1.5cm	weight: 2.8kg	
Operating Temp. Range	0° to 50C		

Incredible Image Quality



Part Number: 5LWiFi



<http://www.finishlynx.com/archive/catalog/images/5LWiFi.jpg>

Wireless Option for EtherLynx Cameras includes 8L101

PRODUCT CATEGORY: ETHERLYNX PRO

Full Product Description:

Includes AirLynx Gateway (8L101)

Part Number: 5LWiFi2



<http://www.finishlynx.com/archive/catalog/images/5LWiFi2.jpg>

Wireless Option for EtherLynx Cameras does not include 8L101

PRODUCT CATEGORY: ETHERLYNX PRO

Full Product Description:

Does not include AirLynx Gateway (8L101)

Part Number: 5LZOOM



<http://www.finishlynx.com/archive/catalog/images/5LZOOM.jpg>

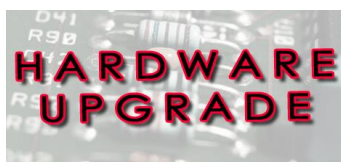
Extended Resolution & Zoom for EtherLynx Pro

PRODUCT CATEGORY: ETHERLYNX PRO

Full Product Description:

Allows use of smaller focal length lenses and extends vertical resolution of EtherLynx Professional camera up to 4000 pixels. Ideal for applications where camera is far from the finish line or with wide finish lines (rowing/canoeing).

Part Number: 5LPLC

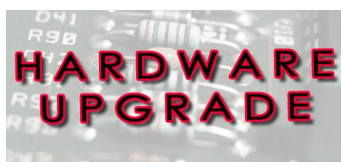

<http://www.finishlynx.com/archive/catalog/images/5LPLC.jpg>
Phased Lighting Compensation Option for EtherLynx Pro

PRODUCT CATEGORY: ETHERLYNX PRO

Full Product Description:

Compensates for dark vertical bars that appear when artificial lighting is in use.

Part Number: 5LFO


<http://www.finishlynx.com/archive/catalog/images/5LFO.jpg>
Frame Offset Option for EtherLynx Pro

PRODUCT CATEGORY: ETHERLYNX PRO

Full Product Description:

Allows the active area of the sensor to be specified rather than defaulted to center

Part Number: 5L5K

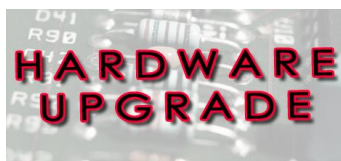

<http://www.finishlynx.com/archive/catalog/images/5L5K.jpg>
EtherLynx Pro frame rate upgrade from 3klps to 5klps

PRODUCT CATEGORY: ETHERLYNX PRO

Full Product Description:

Includes "RAM1GB" memory upgrade to 1Gbyte

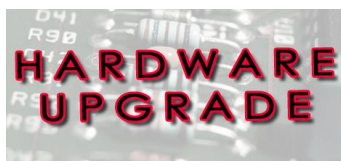
Part Number: 5L5K10K


<http://www.finishlynx.com/archive/catalog/images/5L5K10K.jpg>
EtherLynx Pro frame rate upgrade from 5klps to 10klps

PRODUCT CATEGORY: ETHERLYNX PRO

Call for more information.

Part Number: 5L10K


<http://www.finishlynx.com/archive/catalog/images/5L10K.jpg>
EtherLynx Pro frame rate upgrade from 3klps to 10klps

PRODUCT CATEGORY: ETHERLYNX PRO

Full Product Description:

Includes "RAM1GB" memory upgrade to 1Gbyte

Part Number: RAM1GB


<http://www.finishlynx.com/archive/catalog/images/RAM1GB.jpg>
512Mb to 1Gb RAM Upgrade for EtherLynx Fusion & Pro

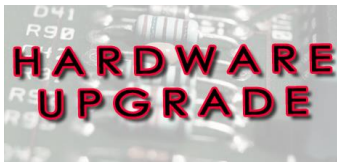
PRODUCT CATEGORY: ETHERLYNX PRO

Full Product Description:

Note: EtherLynx Pro Camera Purchased before June 1, 2008 must use Lynx Part # RAM1GB-CPU

Lynx Catalog

Part Number: **RAM1GB-CPU**



<http://www.finishlynx.com/archive/catalog/images/RAM1GB-CPU.jpg>

256Mbyte to 1Gbyte RAM and CPU Upgrade for EtherLynx Pro

PRODUCT CATEGORY: ETHERLYNX PRO

Full Product Description:

Note: EtherLynx Pro Camera Purchased after June 1, 2008 must use Lynx Part # RAM1GB

Part Number: **5L300PS**



<http://www.finishlynx.com/archive/catalog/images/5L300PS.jpg>

Spare EtherLynx external power supply

PRODUCT CATEGORY: ETHERLYNX PRO

Call for more information.

Part Number: **5L300RG**



<http://www.finishlynx.com/archive/catalog/images/5L300RG.jpg>

Rain Guard for EtherLynx Pro Camera

PRODUCT CATEGORY: ETHERLYNX PRO

Full Product Description:

Waterproof fabric cover for camera.

Part Number: **EtherLynx-CVR**

We are sorry
but there
is currently
no image
available for
this product

<http://www.finishlynx.com/archive/catalog/images/EtherLynx-CVR.jpg>

Plexiglass cover for EtherLynx 2000+, Fusion & Pro

PRODUCT CATEGORY: ETHERLYNX PRO

Call for more information.

Part Number: **5L300DCC**



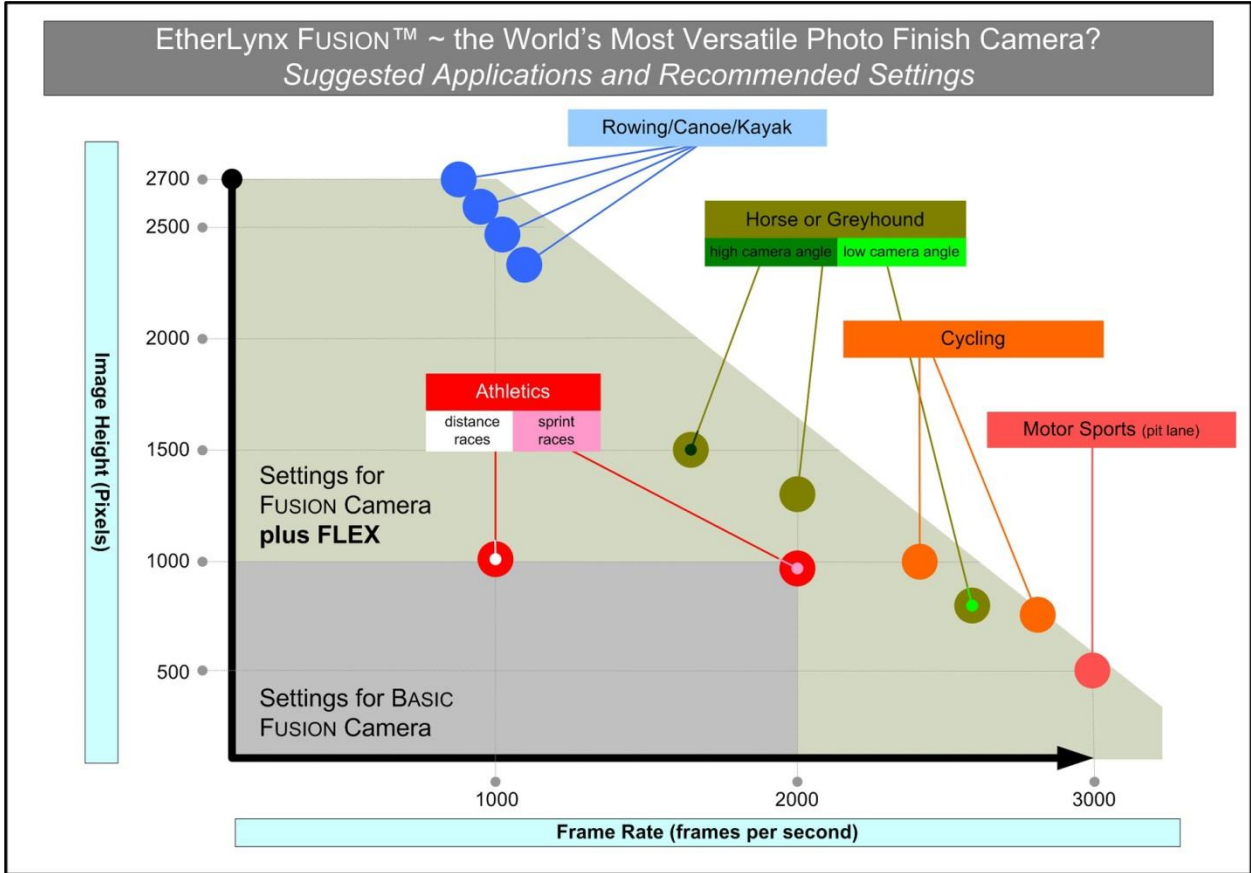
<http://www.finishlynx.com/archive/catalog/images/5L300DCC.jpg>

DC Input cable for the EtherLynx Pro Camera

PRODUCT CATEGORY: ETHERLYNX PRO

Call for more information.

EtherLynx Fusion



Part Number: 5L400



<http://www.finishlynx.com/archive/catalog/images/5L400.jpg>

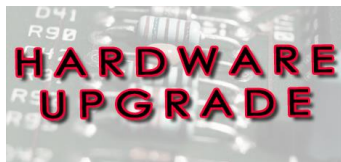
EtherLynx Fusion Camera

PRODUCT CATEGORY: ETHERLYNX FUSION

Full Product Description:

High Sensitivity Color Camera, with a base rate/resolution of 2Kfps by 1K pixel density

Part Number: 5LFLEX



<http://www.finishlynx.com/archive/catalog/images/5LFLEX.jpg>

Flexible rate/resolution option for EtherLynx Fusion Camera

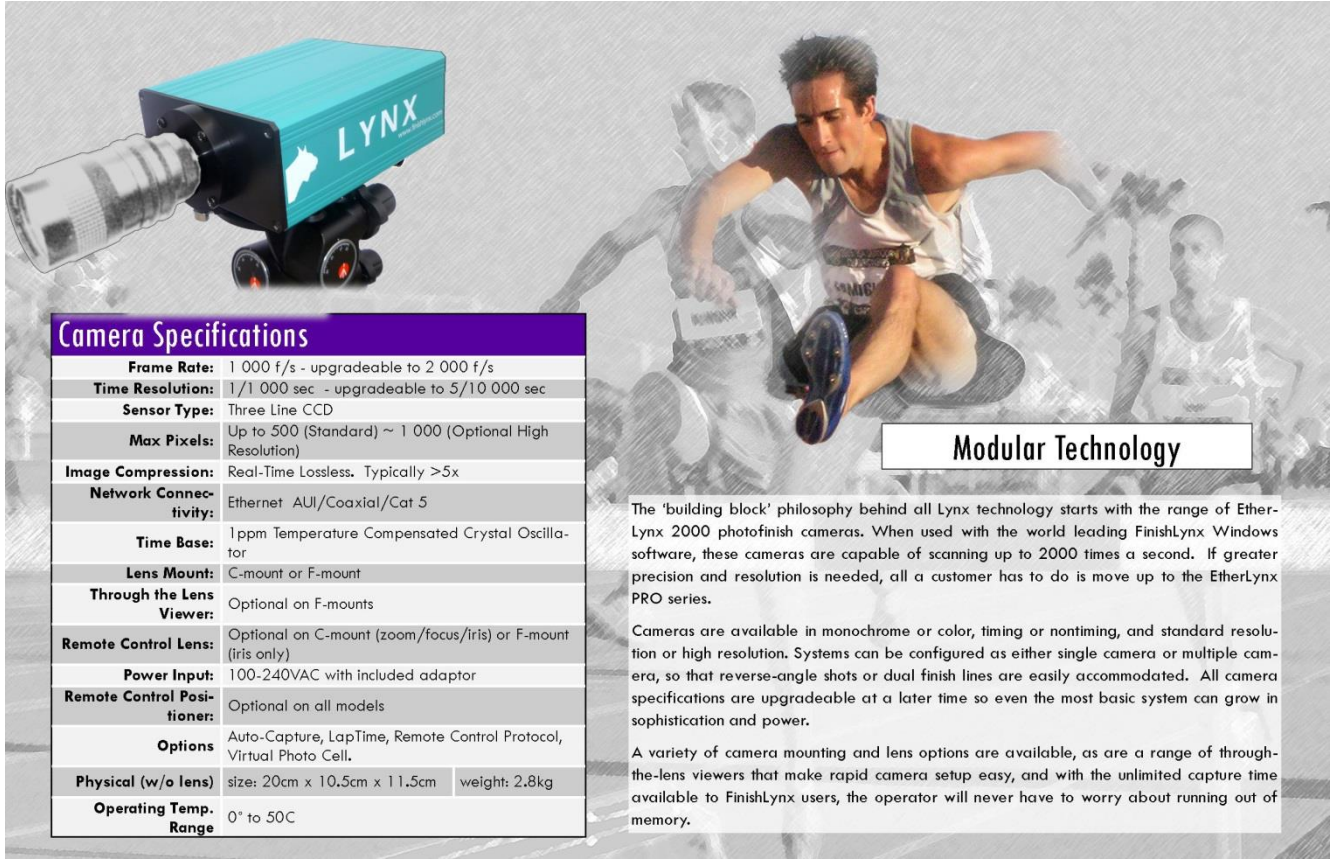
PRODUCT CATEGORY: ETHERLYNX FUSION

Full Product Description:

Enables flexible rate/resolution from 1KfpsX2,700 pixels to 3KfpsX900 pixels

* **Image Disclaimer:** The images presented are informational only and are not intended as a specification. Products may vary from those illustrated and Colors may not be accurate

EtherLynx 2000



Camera Specifications

Frame Rate:	1 000 f/s - upgradeable to 2 000 f/s	
Time Resolution:	1/1 000 sec - upgradeable to 5/10 000 sec	
Sensor Type:	Three Line CCD	
Max Pixels:	Up to 500 (Standard) ~ 1 000 (Optional High Resolution)	
Image Compression:	Real-Time Lossless. Typically >5x	
Network Connectivity:	Ethernet AUJ/Coaxial/Cat 5	
Time Base:	1ppm Temperature Compensated Crystal Oscillator	
Lens Mount:	C-mount or F-mount	
Through the Lens Viewer:	Optional on F-mounts	
Remote Control Lens:	Optional on C-mount (zoom/focus/iris) or F-mount (iris only)	
Power Input:	100-240VAC with included adaptor	
Remote Control Positioner:	Optional on all models	
Options	Auto-Capture, LapTime, Remote Control Protocol, Virtual Photo Cell.	
Physical (w/o lens)	size: 20cm x 10.5cm x 11.5cm	weight: 2.8kg
Operating Temp. Range	0° to 50C	

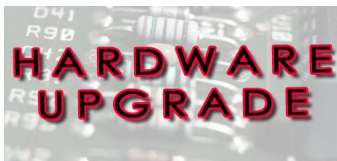
Modular Technology

The 'building block' philosophy behind all Lynx technology starts with the range of EtherLynx 2000 photofinish cameras. When used with the world leading FinishLynx Windows software, these cameras are capable of scanning up to 2000 times a second. If greater precision and resolution is needed, all a customer has to do is move up to the EtherLynx PRO series.

Cameras are available in monochrome or color, timing or nontiming, and standard resolution or high resolution. Systems can be configured as either single camera or multiple camera, so that reverse-angle shots or dual finish lines are easily accommodated. All camera specifications are upgradeable at a later time so even the most basic system can grow in sophistication and power.

A variety of camera mounting and lens options are available, as are a range of through-the-lens viewers that make rapid camera setup easy, and with the unlimited capture time available to FinishLynx users, the operator will never have to worry about running out of memory.

Part Number: 5LTE



<http://www.finishlynx.com/archive/catalog/images/5LTE.jpg>

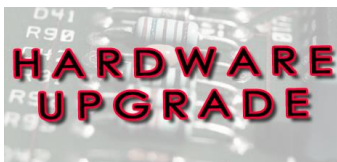
Timer Enabling Option for EtherLynx Camera

PRODUCT CATEGORY: ETHERLYNX 2000

Full Product Description:

Enables events to be timed on all EtherLynx cameras across the network.

Part Number: 5LCO



<http://www.finishlynx.com/archive/catalog/images/5LCO.jpg>

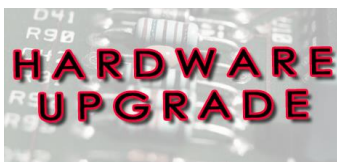
Color Option for EtherLynx Camera

PRODUCT CATEGORY: ETHERLYNX 2000

Full Product Description:

Adds Color to the EtherLynx 5L100 or 5L200 cameras.

Part Number: 5LHR



<http://www.finishlynx.com/archive/catalog/images/5LHR.jpg>

High Resolution Option for EtherLynx Camera

PRODUCT CATEGORY: ETHERLYNX 2000

Full Product Description:

Allows Enhanced Scan Rate of 2000 by Pixel Density of 1000 for the EtherLynx 5L100 or 5L200 cameras.

Part Number: 5L2000+RG

We are sorry
but there
is currently
no image
available for
this product

<http://www.finishlynx.com/archive/catalog/images/5L2000+RG.jpg>

Rain Guard for EtherLynx 2000+ Camera

PRODUCT CATEGORY: ETHERLYNX 2000

Full Product Description:

Waterproof fabric cover for camera.

Part Number: 1A205U



<http://www.finishlynx.com/archive/catalog/images/1A205U.jpg>

Capture Button & cord with USB to Serial Converter

PRODUCT CATEGORY: ETHERLYNX 2000

Call for more information.

Part Number: 1A205L-U



<http://www.finishlynx.com/archive/catalog/images/1A205L-U.jpg>

Capture Button & 15' cord with USB to Serial Converter

PRODUCT CATEGORY: ETHERLYNX 2000

Call for more information.

Part Number: 1A205B



<http://www.finishlynx.com/archive/catalog/images/1A205B.jpg>

Capture Button, without cord or USB to Serial Converter

PRODUCT CATEGORY: ETHERLYNX 2000

Call for more information.

Part Number: C-Box2



<http://www.finishlynx.com/archive/catalog/images/C-Box2.jpg>

Connection Box for EtherLynx Camera with two photoeye inputs

PRODUCT CATEGORY: ETHERLYNX 2000

Full Product Description:

Retains form and functionality of the original C-Box while adding a second photo eye input for use with multiple photo eye configurations.

Part Number: 5LRG



<http://www.finishlynx.com/archive/catalog/images/5LRG.jpg>

Rain Guard for EtherLynx 2000 Camera

PRODUCT CATEGORY: ETHERLYNX 2000

Full Product Description:

For EtherLynx 2000+ Use 5L2000+RG

IdentiLynx



Part Number: **IDL-511**

2D 1280 x 720, 30fps Head on IdentiLynx color camera

PRODUCT CATEGORY: IDENTILYNX

Full Product Description:

Full Frame video camera for use with FinishLynx Software. Resolution Options: 352 x 240, 720 x 480. Max Frame Rate: 30fps



<http://www.finishlynx.com/archive/catalog/images/IDL-511.jpg>

IdentiLynx

Part Number: **IDL-B95**

Extended Resolution IdentiLynx 2D Color Camera - 2592 x 1944

PRODUCT CATEGORY: IDENTILYNX ~ IDENTILYNX

Full Product Description:

Full Frame video camera: 2592x1944 @ 15fps ,2048x1536 @ 20fps, 1920x1080 @30fps



<http://www.finishlynx.com/archive/catalog/images/IDL-B95.jpg>

Part Number: **IDL-PoE**

Power over Ethernet module 30Watt, 56Volts

PRODUCT CATEGORY: IDENTILYNX

Call for more information.



<http://www.finishlynx.com/archive/catalog/images/IDL-PoE.jpg>

Part Number: IDL-CS5-50f1.3



<http://www.finishlynx.com/archive/catalog/images/IDL-CS5-50f1.3.jpg>

CS-Mount Lens, 5-50mm f1.3

PRODUCT CATEGORY: IDENTILYNX

Full Product Description:

For use with IdentiLynx series cameras

Part Number: IDL-Housing



<http://www.finishlynx.com/archive/catalog/images/IDL-Housing.jpg>

Outdoor Housing for IdentiLynx Camera

PRODUCT CATEGORY: IDENTILYNX

Call for more information.

Part Number: IDL-CVR

We are sorry
but there
is currently
no image
available for
this product

<http://www.finishlynx.com/archive/catalog/images/IDL-CVR.jpg>

Plexiglass cover for IdentiLynx

PRODUCT CATEGORY: IDENTILYNX

Call for more information.

Part Number: IDLX-CVR

We are sorry
but there
is currently
no image
available for
this product

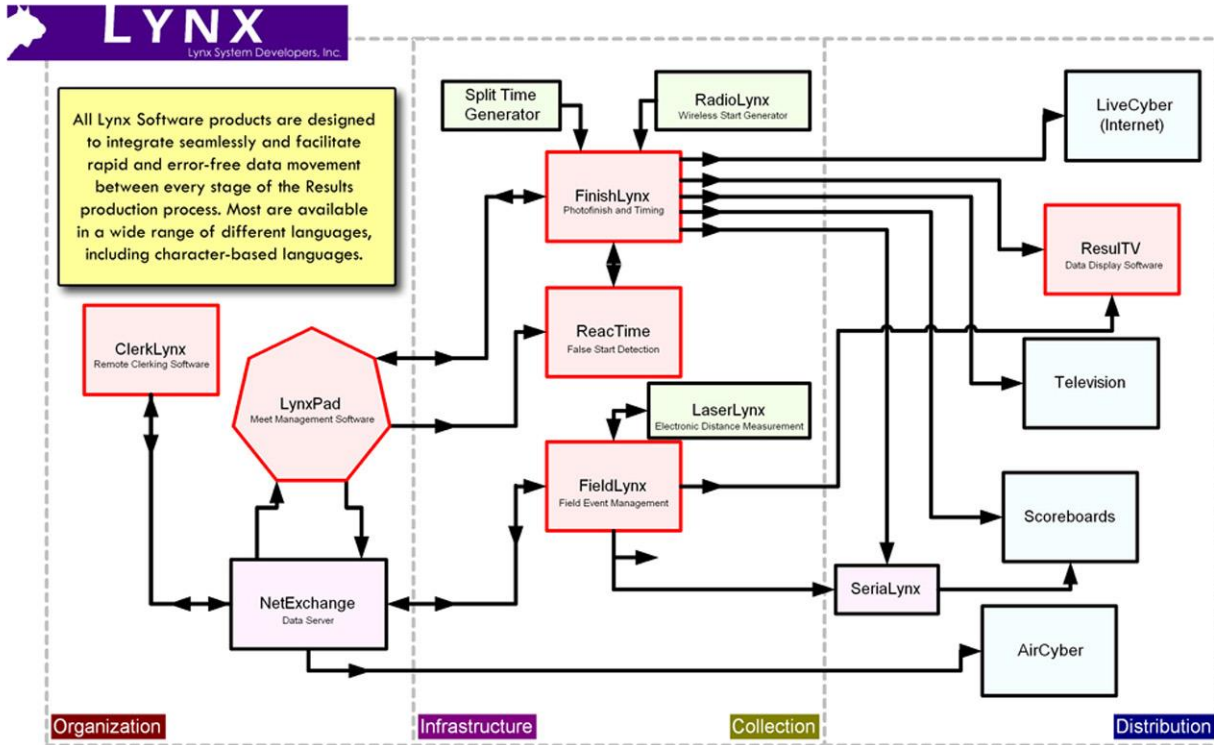
<http://www.finishlynx.com/archive/catalog/images/IDLX-CVR.jpg>

Plexiglass cover for IdentiLynx XS, XR

PRODUCT CATEGORY: IDENTILYNX

Call for more information.

Software

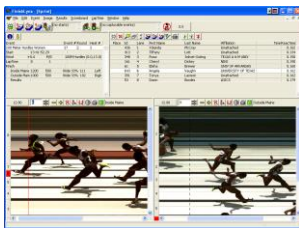


information movement ~ athletics

Copyright 2002-2003 Lynx System Developers, Inc.

FinishLynx

Part Number: 5LSW



<http://www.finishlynx.com/archive/catalog/images/5LSW.jpg>

FinishLynx32 Software License

PRODUCT CATEGORY: SOFTWARE ~ FINISHLYNX

Full Product Description:

Advanced Software with Database Integration - Windows9x/NT /2000/XP/Vista platform.

Part Number: 5LPRL



<http://www.finishlynx.com/archive/catalog/images/5LPRL.jpg>

RadioLynx plug-in for FinishLynx32

PRODUCT CATEGORY: SOFTWARE ~ FINISHLYNX

Full Product Description:

Allows use of RadioLynx wireless start and photocell with FinishLynx.

Part Number: 5LACM


<http://www.finishlynx.com/archive/catalog/images/5LACM.jpg>

Virtual Photo Eye Unit & Auto Capture plug-in for FinishLynx

PRODUCT CATEGORY: SOFTWARE ~ FINISHLYNX

Full Product Description:

Allows any EtherLynx camera to act as a photo eye and send pause & stop signals to running clocks. Also allows automatic capture of any object moving across the finish line.

Part Number: 5LPNCP


<http://www.finishlynx.com/archive/catalog/images/5LPNCP.jpg>

Network Com Port plug-in for FinishLynx32

PRODUCT CATEGORY: SOFTWARE ~ FINISHLYNX

Full Product Description:

Allows FinishLynx to connect to serial devices such as scoreboards and wind gauges via a wired or wireless network. Required when using SerialLynx. Also useful for ResultTV.

Part Number: 5LPTT


<http://www.finishlynx.com/archive/catalog/images/5LPTT.jpg>

Time Trial plug-in for FinishLynx32

PRODUCT CATEGORY: SOFTWARE ~ FINISHLYNX

Full Product Description:

Allows FinishLynx to operate in Time Trial Mode where starts can be assigned to individual athletes.

Part Number: 5LLAP


<http://www.finishlynx.com/archive/catalog/images/5LLAP.jpg>

Lap and Split Counting and Timing plug-in for FinishLynx32

PRODUCT CATEGORY: SOFTWARE ~ FINISHLYNX

Full Product Description:

Enables FinishLynx to accept split times from external devices (e.g. transponders and Chronometers)

Part Number: 5LPES


<http://www.finishlynx.com/archive/catalog/images/5LPES.jpg>

External Synchronization Plug-in for FinishLynx32

PRODUCT CATEGORY: SOFTWARE ~ FINISHLYNX

Full Product Description:

Allows synchronization with external timing devices including GPS based devices

Lynx Catalog

Part Number: **5LPRC**



<http://www.finishlynx.com/archive/catalog/images/5LPRC.jpg>

Remote Control plug-in for FinishLynx32

PRODUCT CATEGORY: SOFTWARE ~ FINISHLYNX

Full Product Description:

Allows Remote Control of FinishLynx user interface so that it can be a slave to another software program.

Part Number: **5LSPLIT**



<http://www.finishlynx.com/archive/catalog/images/5LSPLIT.jpg>

Multi-Split plug-in for FinishLynx32

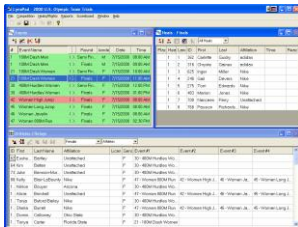
PRODUCT CATEGORY: SOFTWARE ~ FINISHLYNX

Full Product Description:

Allows recording of multiple splits within the same FinishLynx event using a single or multiple cameras.

Meet Management

Part Number: **9LSW01**



<http://www.finishlynx.com/archive/catalog/images/9LSW01.jpg>

LynxPad Meet Management Software

PRODUCT CATEGORY: SOFTWARE ~ MEET MANAGEMENT

Full Product Description:

Multi-lingual software for creating FinishLynx and FieldLynx database files as well as importing and printing start lists and results. Includes many seeding options, multi-event scoring, cross-country scoring, and scoreboard interface.

Lens Mounts & Lenses

Camera Lens Mounts

Part Number: **MC-C**



<http://www.finishlynx.com/archive/catalog/images/MC-C.jpg>

Color C-mount adapter

PRODUCT CATEGORY: LENS MOUNTS & LENSES ~ CAMERA LENS MOUNTS

Full Product Description:

Allows mounting of C-Mount lenses on EtherLynx Color cameras.

Part Number: **MC-F**



<http://www.finishlynx.com/archive/catalog/images/MC-F.jpg>

Color F-mount adapter

PRODUCT CATEGORY: LENS MOUNTS & LENSES ~ CAMERA LENS MOUNTS

Full Product Description:

Allows mounting of F-Mount lenses on EtherLynx Color cameras.

Part Number: **MC-R**



<http://www.finishlynx.com/archive/catalog/images/MC-R.jpg>

Color F-mount adapter with Remote Control Iris

PRODUCT CATEGORY: LENS MOUNTS & LENSES ~ CAMERA LENS MOUNTS

Full Product Description:

Allows for Remote Controlled Iris of F-Mount lenses on EtherLynx Color cameras.

Part Number: **MC-V**



<http://www.finishlynx.com/archive/catalog/images/MC-V.jpg>

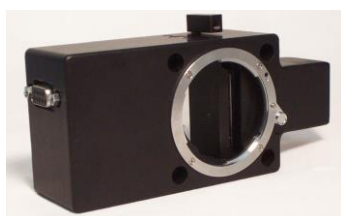
Color F-mount adapter with Through-the-lens viewer

PRODUCT CATEGORY: LENS MOUNTS & LENSES ~ CAMERA LENS MOUNTS

Full Product Description:

Allows mounting of F-Mount lenses on EtherLynx Color cameras. "Through the Lens Viewer" facilitates alignment of camera.

Part Number: **MC-RV**



<http://www.finishlynx.com/archive/catalog/images/MC-RV.jpg>

Color F-mount adapter with TTL viewer & Remote Control Iris

PRODUCT CATEGORY: LENS MOUNTS & LENSES ~ CAMERA LENS MOUNTS

Full Product Description:

Allows for Remote Controlled Iris of F-Mount lenses on EtherLynx Color cameras. "Through the Lens Viewer" facilitates alignment of camera.

Lynx Catalog

Part Number: **MV-R**

We are sorry
but there
is currently
no image
available for
this product

<http://www.finishlynx.com/archive/catalog/images/MV-R.jpg>

F-mount adapter w/ RC Iris for Vision Pro

PRODUCT CATEGORY: LENS MOUNTS & LENSES ~ CAMERA LENS MOUNTS

Full Product Description:

Allows for Remote Controlled Iris of F-Mount lenses on Vision Pro cameras.

Part Number: **MV-RV**

We are sorry
but there
is currently
no image
available for
this product

<http://www.finishlynx.com/archive/catalog/images/MV-RV.jpg>

F-mount adapter w/ RC Iris & Viewer for Vision Pro

PRODUCT CATEGORY: LENS MOUNTS & LENSES ~ CAMERA LENS MOUNTS

Full Product Description:

Allows for Remote Controlled Iris of F-Mount lenses and "Through the Lens Viewer" for locally aligning Vision Pro cameras

Part Number: **MV-RF**

We are sorry
but there
is currently
no image
available for
this product

<http://www.finishlynx.com/archive/catalog/images/MV-RF.jpg>

F-mount adapter w/ RC Iris, RC Focus for Vision Pro

PRODUCT CATEGORY: LENS MOUNTS & LENSES ~ CAMERA LENS MOUNTS

Full Product Description:

Allows for Remote Controlled Iris and Remote Control Focus of F-Mount lenses on Vision Pro cameras.

Part Number: **MV-RVF**

We are sorry
but there
is currently
no image
available for
this product

<http://www.finishlynx.com/archive/catalog/images/MV-RVF.jpg>

F-mount adapter w/ RC Iris, Viewer & RC Focus for Vision Pro

PRODUCT CATEGORY: LENS MOUNTS & LENSES ~ CAMERA LENS MOUNTS

Full Product Description:

Allows for Remote Controlled Iris, Remote Control Focus of F-Mount lenses and "Through the lens Viewer" on Vision Pro cameras.

Part Number: **MCS-C**

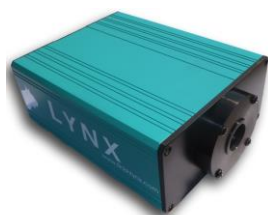


<http://www.finishlynx.com/archive/catalog/images/MCS-C.jpg>

CS Mount to C Mount Adapter

PRODUCT CATEGORY: LENS MOUNTS & LENSES ~ CAMERA LENS MOUNTS

Call for more information.

Part Number: **MM-C**
<http://www.finishlynx.com/archive/catalog/images/MM-C.jpg>
Monochrome C-mount adapter

PRODUCT CATEGORY: LENS MOUNTS & LENSES ~ CAMERA LENS MOUNTS

Full Product Description:

Allows mounting of C-Mount lenses on EtherLynx Monochrome cameras.

Part Number: **MM-F**
<http://www.finishlynx.com/archive/catalog/images/MM-F.jpg>
Monochrome F-mount adapter

PRODUCT CATEGORY: LENS MOUNTS & LENSES ~ CAMERA LENS MOUNTS

Full Product Description:

Allows mounting of F-Mount lenses on EtherLynx Monochrome cameras.

Part Number: **MM-R**
<http://www.finishlynx.com/archive/catalog/images/MM-R.jpg>
Monochrome F-mount adapter with Remote Control Iris

PRODUCT CATEGORY: LENS MOUNTS & LENSES ~ CAMERA LENS MOUNTS

Full Product Description:

Allows for Remote Controlled Iris of F-Mount lenses on EtherLynx Monochrome cameras.

Part Number: **MM-V**
<http://www.finishlynx.com/archive/catalog/images/MM-V.jpg>
Monochrome F-mount adapter with Through-the-lens viewer

PRODUCT CATEGORY: LENS MOUNTS & LENSES ~ CAMERA LENS MOUNTS

Full Product Description:

Allows mounting of F-Mount lenses on EtherLynx Monochrome cameras. "Through the Lens Viewer" facilitates alignment of camera.

Part Number: **MM-RV**
<http://www.finishlynx.com/archive/catalog/images/MM-RV.jpg>
Monochrome F-mount adapter with TTL viewer & Remote Iris

PRODUCT CATEGORY: LENS MOUNTS & LENSES ~ CAMERA LENS MOUNTS

Full Product Description:

Allows for Remote Controlled Iris of F-Mount lenses on EtherLynx Monochrome cameras. "Through the Lens Viewer" facilitates alignment of camera.

CS-Mount Lenses

Part Number: **CS-612**



<http://www.finishlynx.com/archive/catalog/images/CS-612.jpg>

Fixed 6mm CS lens, F1.2

PRODUCT CATEGORY: LENS MOUNTS & LENSES ~ CS-MOUNT LENSES

Call for more information.

Part Number: **CS2810P**

We are sorry
but there
is currently
no image
available for
this product

<http://www.finishlynx.com/archive/catalog/images/CS2810P.jpg>

CS Mount 2.8-10mm P-Iris

PRODUCT CATEGORY: LENS MOUNTS & LENSES ~ CS-MOUNT LENSES

Call for more information.

C-Mount Lenses

Part Number: **DO-1213**



<http://www.finishlynx.com/archive/catalog/images/DO-1213.jpg>

Manual C-Mount Lens, 12.5mm f/1.3

PRODUCT CATEGORY: LENS MOUNTS & LENSES ~ C-MOUNT LENSES

Full Product Description:

Fixed focal length, manual focus and iris control.

Part Number: **155**



<http://www.finishlynx.com/archive/catalog/images/155.jpg>

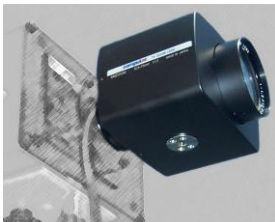
Manual Zoom C-Mount Lens, 12.5-75mm f1.2 with manual iris

PRODUCT CATEGORY: LENS MOUNTS & LENSES ~ C-MOUNT LENSES

Full Product Description:

Manual zoom, focus and iris control.

Part Number: **C1275M**



<http://www.finishlynx.com/archive/catalog/images/C1275M.jpg>

Remote Controlled Zoom C-Mount Lens 12.5-75mm f1.2

PRODUCT CATEGORY: LENS MOUNTS & LENSES ~ C-MOUNT LENSES

Full Product Description:

Allows for Remote Controlled zoom, focus and iris.

Part Number: **C848**
<http://www.finishlynx.com/archive/catalog/images/C848.jpg>
C Mount 8-48mm Manual Lens

PRODUCT CATEGORY: LENS MOUNTS & LENSES ~ C-MOUNT
LENSES

Call for more information.

Part Number: **C848M**
<http://www.finishlynx.com/archive/catalog/images/C848M.jpg>
C Mount 8-48mm Motorized Zoom Lens

PRODUCT CATEGORY: LENS MOUNTS & LENSES ~ C-MOUNT
LENSES

Call for more information.

Part Number: **V160ZM**
<http://www.finishlynx.com/archive/catalog/images/V160ZM.jpg>
Manual Zoom C-Mount Lens, 16-160mm f2.0 with manual iris

PRODUCT CATEGORY: LENS MOUNTS & LENSES ~ C-MOUNT
LENSES

Full Product Description:

Manual zoom, focus and iris control.

Part Number: **V2513**
<http://www.finishlynx.com/archive/catalog/images/V2513.jpg>
Manual C-Mount Lens, 25mm f1.3

PRODUCT CATEGORY: LENS MOUNTS & LENSES ~ C-MOUNT
LENSES

Full Product Description:

Fixed focal length, manual focus and iris control.

Part Number: **DO-2514**
<http://www.finishlynx.com/archive/catalog/images/DO-2514.jpg>
Manual C-Mount Lens, 25mm f/1.4

PRODUCT CATEGORY: LENS MOUNTS & LENSES ~ C-MOUNT
LENSES

Full Product Description:

Fixed focal length, manual focus and iris control.

Lynx Catalog

Part Number: **C814P**

We are sorry
but there
is currently
no image
available for
this product

<http://www.finishlynx.com/archive/catalog/images/C814P.jpg>

C Mount 8mm F1.4 Lens with P Iris

PRODUCT CATEGORY: LENS MOUNTS & LENSES ~ C-MOUNT
LENSES

Call for more information.

F-Mount Lenses

Part Number: **AF09N700**



<http://www.finishlynx.com/archive/catalog/images/AF09N700.jpg>

F-Mount Lens, 28-75mm f/2.8 (remote iris only)

PRODUCT CATEGORY: LENS MOUNTS & LENSES ~ F-MOUNT
LENSES

Call for more information.

Part Number: **NK1929**



<http://www.finishlynx.com/archive/catalog/images/NK1929.jpg>

F-Mount Lens, 24-85mm f/2.8-4.0

PRODUCT CATEGORY: LENS MOUNTS & LENSES ~ F-MOUNT
LENSES

Call for more information.

Part Number: **SI3014**



<http://www.finishlynx.com/archive/catalog/images/SI3014.jpg>

F-Mount Lens, 30mm f/1.4

PRODUCT CATEGORY: LENS MOUNTS & LENSES ~ F-MOUNT
LENSES

Call for more information.

Part Number: **NK1429**



<http://www.finishlynx.com/archive/catalog/images/NK1429.jpg>

Nikon F-Mount Lens, 35mm f/1.4

PRODUCT CATEGORY: LENS MOUNTS & LENSES ~ F-MOUNT
LENSES

Call for more information.

Part Number: **NK1923**
<http://www.finishlynx.com/archive/catalog/images/NK1923.jpg>
Nikon F-Mount Lens, 35mm f2

PRODUCT CATEGORY: LENS MOUNTS & LENSES ~ F-MOUNT
LENSES

Call for more information.

Part Number: **NK1902**
<http://www.finishlynx.com/archive/catalog/images/NK1902.jpg>
Nikon F-Mount Lens, 50mm f1.4

PRODUCT CATEGORY: LENS MOUNTS & LENSES ~ F-MOUNT
LENSES

Call for more information.

Part Number: **NK2137**
<http://www.finishlynx.com/archive/catalog/images/NK2137.jpg>
Nikon F-Mount Lens, 50mm f1.8

PRODUCT CATEGORY: LENS MOUNTS & LENSES ~ F-MOUNT
LENSES

Call for more information.

Part Number: **NK1986**
<http://www.finishlynx.com/archive/catalog/images/NK1986.jpg>
Nikon Manual Zoom F-Mount Lens, 80-200mm f/2.8

PRODUCT CATEGORY: LENS MOUNTS & LENSES ~ F-MOUNT
LENSES

Call for more information.

Part Number: **NK1931**
<http://www.finishlynx.com/archive/catalog/images/NK1931.jpg>
Nikon F-Mount Lens, 85mm f1.8

PRODUCT CATEGORY: LENS MOUNTS & LENSES ~ F-MOUNT
LENSES

Call for more information.

Lynx Catalog

Part Number: **NK1932**



<http://www.finishlynx.com/archive/catalog/images/NK1932.jpg>

Nikon F-Mount Lens, 105mm/f2.0

PRODUCT CATEGORY: LENS MOUNTS & LENSES ~ F-MOUNT LENSES

[Call for more information.](#)

Part Number: **NK1934**



<http://www.finishlynx.com/archive/catalog/images/NK1934.jpg>

Nikon F-Mount Lens, 135mm/f2

PRODUCT CATEGORY: LENS MOUNTS & LENSES ~ F-MOUNT LENSES

[Call for more information.](#)

Part Number: **NK1940**



<http://www.finishlynx.com/archive/catalog/images/NK1940.jpg>

Nikon F-Mount Lens, 180mm f/2.8

PRODUCT CATEGORY: LENS MOUNTS & LENSES ~ F-MOUNT LENSES

[Call for more information.](#)

Part Number: **NK1943**



<http://www.finishlynx.com/archive/catalog/images/NK1943.jpg>

Nikon F-Mount Lens, 300mm f2.8

PRODUCT CATEGORY: LENS MOUNTS & LENSES ~ F-MOUNT LENSES

[Call for more information.](#)

Part Number: **NK1400**



<http://www.finishlynx.com/archive/catalog/images/NK1400.jpg>

Nikon F-Mount 1.4X Converter

PRODUCT CATEGORY: LENS MOUNTS & LENSES ~ F-MOUNT LENSES

[Call for more information.](#)

Part Number: SI183518DCN

We are sorry
but there
is currently
no image
available for
this product

<http://www.finishlynx.com/archive/catalog/images/SI183518DCN.jpg>

F-Mount 18-35mm f/1.8 Lens (Remote Iris Only)

PRODUCT CATEGORY: LENS MOUNTS & LENSES ~ F-MOUNT
LENSES

[Call for more information.](#)

Part Number: SI5010018DCN

We are sorry
but there
is currently
no image
available for
this product

<http://www.finishlynx.com/archive/catalog/images/SI5010018DCN.jpg>

F-Mount 50-100mm f/1.8 Lens (Remote Iris Only)

PRODUCT CATEGORY: LENS MOUNTS & LENSES ~ F-MOUNT
LENSES

[Call for more information.](#)

Part Number: TO112028PDXN

We are sorry
but there
is currently
no image
available for
this product

<http://www.finishlynx.com/archive/catalog/images/TO112028PDXN.jpg>

F-Mount 11-20mm f/2.8 Lens (Remote Iris Only)

PRODUCT CATEGORY: LENS MOUNTS & LENSES ~ F-MOUNT
LENSES

[Call for more information.](#)

Part Number: SI175028NI

We are sorry
but there
is currently
no image
available for
this product

<http://www.finishlynx.com/archive/catalog/images/SI175028NI.jpg>

F-Mount 17-50mm f/2.8 Lens (Remote Iris Only)

PRODUCT CATEGORY: LENS MOUNTS & LENSES ~ F-MOUNT
LENSES

[Call for more information.](#)

Camera Mounting Equipment

Part Number: 2L102



<http://www.finishlynx.com/archive/catalog/images/2L102.jpg>

Remote Positioner

PRODUCT CATEGORY: CAMERA MOUNTING EQUIPMENT

Full Product Description:

Allows remote positioning of camera's pan, tilt and swivel motion from the computer.

Part Number: BG3275



<http://www.finishlynx.com/archive/catalog/images/BG3275.jpg>

Geared Mounting Head

PRODUCT CATEGORY: CAMERA MOUNTING EQUIPMENT

Full Product Description:

Attaches to tripod or super clamp and allows horizontal, vertical & swivel adjustment of camera.

Part Number: BG3263



<http://www.finishlynx.com/archive/catalog/images/BG3263.jpg>

Heavy-Duty Geared Mounting Head

PRODUCT CATEGORY: CAMERA MOUNTING EQUIPMENT

Full Product Description:

Attaches to tripod or super clamp and allows horizontal, vertical & swivel adjustment of camera.

Part Number: BG2909



<http://www.finishlynx.com/archive/catalog/images/BG2909.jpg>

Super Head Clamp

PRODUCT CATEGORY: CAMERA MOUNTING EQUIPMENT

Full Product Description:

When used with tripod head, mounts camera to any pole or board

Part Number: BG3036



<http://www.finishlynx.com/archive/catalog/images/BG3036.jpg>

Heavy Duty 74" Camera Tripod with Leveling Guide

PRODUCT CATEGORY: CAMERA MOUNTING EQUIPMENT

Call for more information.

Part Number: **TP-105**

We are sorry
but there
is currently
no image
available for
this product

<http://www.finishlynx.com/archive/catalog/images/TP-105.jpg>

Heavy Duty 105" Camera Tripod with Leveling Guide

PRODUCT CATEGORY: CAMERA MOUNTING EQUIPMENT

Call for more information.

Part Number: **B200**

<http://www.finishlynx.com/archive/catalog/images/B200.jpg>

Heavy Duty 152" Crank-Up Camera Stand w/ Wheels

PRODUCT CATEGORY: CAMERA MOUNTING EQUIPMENT

Call for more information.

Part Number: **BG394**

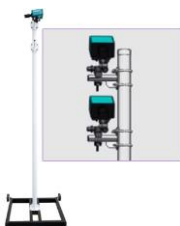
We are sorry
but there
is currently
no image
available for
this product

<http://www.finishlynx.com/archive/catalog/images/BG394.jpg>

Medium Duty tripod

PRODUCT CATEGORY: CAMERA MOUNTING EQUIPMENT

Call for more information.

Part Number: **2L200P**

<http://www.finishlynx.com/archive/catalog/images/2L200P.jpg>

Camera Mounting Post

PRODUCT CATEGORY: CAMERA MOUNTING EQUIPMENT

Full Product Description:

Camera mounting post made from 4" aluminum with heavy wheeled base. One 12' high section.

Part Number: **BG3232**

<http://www.finishlynx.com/archive/catalog/images/BG3232.jpg>

Swivel Tilt Head

PRODUCT CATEGORY: CAMERA MOUNTING EQUIPMENT

Full Product Description:

Allows swivel and tilt adjustment, useful with 2L200P Camera Mounting Post.

Lynx Catalog

Part Number: **LW-TiltHead**

We are sorry
but there
is currently
no image
available for
this product

<http://www.finishlynx.com/archive/catalog/images/LW-TiltHead.jpg>

Light Weight Mini Ball Tilt Head

PRODUCT CATEGORY: CAMERA MOUNTING EQUIPMENT

Call for more information.

Part Number: **BG3271_**



http://www.finishlynx.com/archive/catalog/images/BG3271_.jpg

Quick Release Plate for 3275 Head

PRODUCT CATEGORY: CAMERA MOUNTING EQUIPMENT

Full Product Description:

Replacement quick release plate for the 3275 geared head.

Part Number: **BG3419**



<http://www.finishlynx.com/archive/catalog/images/BG3419.jpg>

Micro Positioning Plate

PRODUCT CATEGORY: CAMERA MOUNTING EQUIPMENT

Full Product Description:

Attaches between camera and mounting head to allow fine horizontal adjustment.

Part Number: **BG2907**



<http://www.finishlynx.com/archive/catalog/images/BG2907.jpg>

Reversible Stud for Super Head Clamp

PRODUCT CATEGORY: CAMERA MOUNTING EQUIPMENT

Call for more information.

Part Number: **EH5723**



<http://www.finishlynx.com/archive/catalog/images/EH5723.jpg>

Environmental Camera enclosure - 23" long

PRODUCT CATEGORY: CAMERA MOUNTING EQUIPMENT

Full Product Description:

Intended for permanent installations only, such as horse tracks

Part Number: **SS5723**

REQUIRES
EH5723



<http://www.finishlynx.com/archive/catalog/images/SS5723.jpg>

Sun Shroud for Camera enclosure

PRODUCT CATEGORY: CAMERA MOUNTING EQUIPMENT

Full Product Description:

Sun Shroud for EH5723 Camera enclosure

Part Number: **EH5729**



<http://www.finishlynx.com/archive/catalog/images/EH5729.jpg>

Environmental Camera enclosure - 29" long

PRODUCT CATEGORY: CAMERA MOUNTING EQUIPMENT

Full Product Description:

Intended for permanent installations only, such as horse tracks

Part Number: **SS5729**

**REQUIRES
EH5729**



<http://www.finishlynx.com/archive/catalog/images/SS5729.jpg>

Sun Shroud for Camera enclosure

PRODUCT CATEGORY: CAMERA MOUNTING EQUIPMENT

Full Product Description:

Sun Shroud for EH5729 Camera enclosure

Starting Equipment

Electronic Start

Part Number: 3L500



<http://www.finishlynx.com/archive/catalog/images/3L500.jpg>

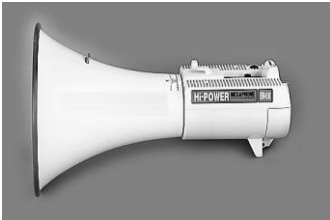
Electronic Starting System, includes one speaker

PRODUCT CATEGORY: STARTING EQUIPMENT ~ ELECTRONIC START

Full Product Description:

Electronic "gun" generates a flash and an electronic gun sound or tone through a single large speaker. Comes with a headset to allow starting commands to run through the speaker as well. Can be used wired or with RadioLynx.

Part Number: 3L500SK



<http://www.finishlynx.com/archive/catalog/images/3L500SK.jpg>

Electronic Start Speaker Kit

PRODUCT CATEGORY: STARTING EQUIPMENT ~ ELECTRONIC START

Full Product Description:

Used to add up to three additional speakers to Electronic Starting System.

Part Number: HS-9



<http://www.finishlynx.com/archive/catalog/images/HS-9.jpg>

Spare Headset for Electronic Starting System

PRODUCT CATEGORY: STARTING EQUIPMENT ~ ELECTRONIC START

Call for more information.

Part Number: PS-77



<http://www.finishlynx.com/archive/catalog/images/PS-77.jpg>

Spare Gun for Electronic Starting System

PRODUCT CATEGORY: STARTING EQUIPMENT ~ ELECTRONIC START

Call for more information.

RadioLynx

Part Number: 3L900



<http://www.finishlynx.com/archive/catalog/images/3L900.jpg>

RadioLynx Wireless Start System

PRODUCT CATEGORY: STARTING EQUIPMENT ~ RADIOLYNX

Full Product Description:

Includes RadioLynx transmitter, receiver, power supply & one 3L300R sensor. Range of up to 800m.

Part Number: **3L900E**



<http://www.finishlynx.com/archive/catalog/images/3L900E.jpg>

Extended Range RadioLynx Wireless Start System

PRODUCT CATEGORY: STARTING EQUIPMENT ~ RADIOLYNX

Full Product Description:

Includes RadioLynx long-range transmitter, receiver, power supply & one 3L300R sensor. Range of up to 5km.

Part Number: **8L-Clip**



<http://www.finishlynx.com/archive/catalog/images/8L-Clip.jpg>

Belt Clip Kit for RadioLynx Transmitter

PRODUCT CATEGORY: STARTING EQUIPMENT ~ RADIOLYNX

Call for more information.

Part Number: **3L300R**



<http://www.finishlynx.com/archive/catalog/images/3L300R.jpg>

Normally Open Start Sensor for RadioLynx

PRODUCT CATEGORY: STARTING EQUIPMENT ~ RADIOLYNX

Full Product Description:

Only for use with RadioLynx Transmitter.

Part Number: **MG-DEC004**



<http://www.finishlynx.com/archive/catalog/images/MG-DEC004.jpg>

RadioLynx Receiver

PRODUCT CATEGORY: STARTING EQUIPMENT ~ RADIOLYNX

Full Product Description:

One receiver can accept start and photocell signals from multiple transmitters.

Part Number: **MG-DEC004_Serial**



http://www.finishlynx.com/archive/catalog/images/MG-DEC004_Serial.jpg

RadioLynx Receiver Serial Cable

PRODUCT CATEGORY: STARTING EQUIPMENT ~ RADIOLYNX

Call for more information.

Lynx Catalog

Part Number: **MG-ENC004**



<http://www.finishlynx.com/archive/catalog/images/MG-ENC004.jpg>

RadioLynx Transmitter

PRODUCT CATEGORY: STARTING EQUIPMENT ~ RADIOLYNX

Full Product Description:

Particularly useful for placing a wireless photocell at the 200m point.

Part Number: **MG-ENC004_Input**



http://www.finishlynx.com/archive/catalog/images/MG-ENC004_Input.jpg

RadioLynx Transmitter Input Cable

PRODUCT CATEGORY: STARTING EQUIPMENT ~ RADIOLYNX

Call for more information.

Part Number: **MG-ENC204**



<http://www.finishlynx.com/archive/catalog/images/MG-ENC204.jpg>

Extended Range RadioLynx Transmitter

PRODUCT CATEGORY: STARTING EQUIPMENT ~ RADIOLYNX

Call for more information.

Part Number: **8L-PS**



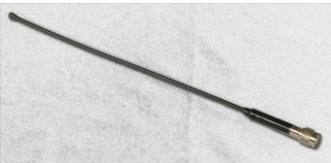
<http://www.finishlynx.com/archive/catalog/images/8L-PS.jpg>

12V Power Supply for RadioLynx, Reactime and SerialLynx

PRODUCT CATEGORY: STARTING EQUIPMENT ~ RADIOLYNX

Call for more information.

Part Number: **MG-ELA009**



<http://www.finishlynx.com/archive/catalog/images/MG-ELA009.jpg>

Spare antenna for RadioLynx

PRODUCT CATEGORY: STARTING EQUIPMENT ~ RADIOLYNX

Call for more information.

Part Number: **3L300**



<http://www.finishlynx.com/archive/catalog/images/3L300.jpg>

Normally Open Start Sensor

PRODUCT CATEGORY: STARTING EQUIPMENT

Call for more information.

Part Number: 3L400



<http://www.finishlynx.com/archive/catalog/images/3L400.jpg>

Normally Closed Start Sensor w/ Ready Light

PRODUCT CATEGORY: STARTING EQUIPMENT

Call for more information.

Part Number: 3L-Mount



<http://www.finishlynx.com/archive/catalog/images/3L-Mount.jpg>

Nylon Mount for attaching gun sensor to starters gun

PRODUCT CATEGORY: STARTING EQUIPMENT

Call for more information.

Part Number: 3L-Strobe

We are sorry
but there
is currently
no image
available for
this product

<http://www.finishlynx.com/archive/catalog/images/3L-Strobe.jpg>

Ext strobe for Visual Indication of "normally open" start

PRODUCT CATEGORY: STARTING EQUIPMENT

Call for more information.

Part Number: 3L400MB



<http://www.finishlynx.com/archive/catalog/images/3L400MB.jpg>

Normally Closed to Normally Open Converter

PRODUCT CATEGORY: STARTING EQUIPMENT

Full Product Description:

Useful for starting another normally open input timing device using a single normally closed sensor.

Part Number: MG-ACC032_



http://www.finishlynx.com/archive/catalog/images/MG-ACC032_.jpg

Start Gate with double contact (FIS) and Bar

PRODUCT CATEGORY: STARTING EQUIPMENT

Call for more information.

Part Number: MG-SEM001



<http://www.finishlynx.com/archive/catalog/images/MG-SEM001.jpg>

Starting semaphore

PRODUCT CATEGORY: STARTING EQUIPMENT

Call for more information.

Part Number: **MG-BAG014**

Holding bag for Semaphore

PRODUCT CATEGORY: STARTING EQUIPMENT

Call for more information.



<http://www.finishlynx.com/archive/catalog/images/MG-BAG014.jpg>

Photo Cells

Part Number: **MG-ACC033**



<http://www.finishlynx.com/archive/catalog/images/MG-ACC033.jpg>

Long Range, Single Beam Photocell

PRODUCT CATEGORY: PHOTO CELLS

Full Product Description:

Rechargeable, single beam photocell. 30 meter optical range

Part Number: **MG-ACC034**



<http://www.finishlynx.com/archive/catalog/images/MG-ACC034.jpg>

Reflector for Long Range, Single Beam Photocell

PRODUCT CATEGORY: PHOTO CELLS

Full Product Description:

Part Number: **ACC033K**



<http://www.finishlynx.com/archive/catalog/images/ACC033K.jpg>

Wireless Photocell Kit

PRODUCT CATEGORY: PHOTO CELLS

Full Product Description:

Includes long range single beam photocell, reflector, two tripods, banana cube adapter and radio transmitter.

Part Number: **ACC093K**



<http://www.finishlynx.com/archive/catalog/images/ACC093K.jpg>

Wireless Photocell Kit - Short Range

PRODUCT CATEGORY: PHOTO CELLS

Full Product Description:

Includes short range single beam photocell, reflector, two tripods, banana cube adapter and radio transmitter.

Part Number: **MG-ACC093S**



<http://www.finishlynx.com/archive/catalog/images/MG-ACC093S.jpg>

Single Photocell Kit (15m Range)

PRODUCT CATEGORY: PHOTO CELLS

Full Product Description:

Includes one 15m range single beam photocell, one reflector, two tripods, mounting supports and photocell cable.

Lynx Catalog

Part Number: **MG-ACC093D**



<http://www.finishlynx.com/archive/catalog/images/MG-ACC093D.jpg>

Double Photocell Kit (15m Range)

PRODUCT CATEGORY: PHOTO CELLS ~

Full Product Description:

Includes two 15m range single beam photocells, two reflectors, two tripods and two double mounting supports and double photocell cable

Part Number: **MG-ACC093**



<http://www.finishlynx.com/archive/catalog/images/MG-ACC093.jpg>

Short Range, Single Beam Photocell

PRODUCT CATEGORY: PHOTO CELLS

Full Product Description:

Rechargeable, single beam photocell. 15 meter optical range

Part Number: **MG-ACC094**



<http://www.finishlynx.com/archive/catalog/images/MG-ACC094.jpg>

Reflector for Short Range, Single Beam Photocell

PRODUCT CATEGORY: PHOTO CELLS

Call for more information.

Part Number: **7LTP**



<http://www.finishlynx.com/archive/catalog/images/7LTP.jpg>

Mini Tripod

PRODUCT CATEGORY: PHOTO CELLS

Full Product Description:

Useful for mounting photocell or reflector.

Part Number: **BG-3007K2**



<http://www.finishlynx.com/archive/catalog/images/BG-3007K2.jpg>

Ground Level Photocell Tripod

PRODUCT CATEGORY: PHOTO CELLS

Full Product Description:

Allows photocell or reflector to be mounted at ground level.

Part Number: **MG-ACC054**
<http://www.finishlynx.com/archive/catalog/images/MG-ACC054.jpg>
Banana Cube Adapter*PRODUCT CATEGORY:* PHOTO CELLSFull Product Description:

Allows radio transmitter to be mounted to photocell.

Part Number: **PE-Input**
<http://www.finishlynx.com/archive/catalog/images/PE-Input.jpg>
Photocell Input Cable - 15 feet long*PRODUCT CATEGORY:* PHOTO CELLS

Call for more information.

Part Number: **MG-ACC083**
<http://www.finishlynx.com/archive/catalog/images/MG-ACC083.jpg>
Support for Double Photocell/Reflector*PRODUCT CATEGORY:* PHOTO CELLSFull Product Description:

Allows two photocells or reflectors to be mounted in the same plane.

Part Number: **MG-CAB119**
<http://www.finishlynx.com/archive/catalog/images/MG-CAB119.jpg>
Cable for Double Photocell*PRODUCT CATEGORY:* PHOTO CELLSFull Product Description:

Allows two photocells to be connected in serial to produce one signal when both beams are broken

Part Number: **MG-ACC123**

We are sorry
but there
is currently
no image
available for
this product

<http://www.finishlynx.com/archive/catalog/images/MG-ACC123.jpg>
Photocell holder*PRODUCT CATEGORY:* PHOTO CELLS

Call for more information.

Wind Gauges

Part Number: **WG-Lynx-SA**



<http://www.finishlynx.com/archive/catalog/images/WG-Lynx-SA.jpg>

Weather Proof Wind Gauge for use with FL and stand alone use

PRODUCT CATEGORY: WIND GAUGES

Full Product Description:

Includes: Complete WG-Lynx & WG-SA-CTRL standa alone controller unit

Part Number: **WG-Lynx-SA-B**

We are sorry but there is currently no image available for this product

<http://www.finishlynx.com/archive/catalog/images/WG-Lynx-SA-B.jpg>

Includes WG-Lynx-SA, 7LBATT & C-LynxWG-Batt

PRODUCT CATEGORY: WIND GAUGES

Full Product Description:

Part Number: **WG-Lynx**



<http://www.finishlynx.com/archive/catalog/images/WG-Lynx.jpg>

Weather Proof Wind Gauge for use with FinishLynx

PRODUCT CATEGORY: WIND GAUGES

Full Product Description:

Includes tripod, case, DC Power Cord and 200' cable.

Part Number: **WG-Lynx-B**

We are sorry but there is currently no image available for this product

<http://www.finishlynx.com/archive/catalog/images/WG-Lynx-B.jpg>

Includes WG-Lynx, 7LBATT & C-LynxWG-Batt

PRODUCT CATEGORY: WIND GAUGES

Full Product Description:

Part Number: **C-LynxWG-Batt**

We are sorry but there is currently no image available for this product

<http://www.finishlynx.com/archive/catalog/images/C-LynxWG-Batt.jpg>

Cable for WG-Lynx to External Battery

PRODUCT CATEGORY: WIND GAUGES

Full Product Description:

Cable only

Part Number: **C-LynxWG-Input**

We are sorry
but there
is currently
no image
available for
this product

<http://www.finishlynx.com/archive/catalog/images/C-LynxWG-Input.jpg>

WG-Lynx Input cable

PRODUCT CATEGORY: WIND GAUGES

Full Product Description:

Cable only

Part Number: **EXTBatt_WGLX**

We are sorry
but there
is currently
no image
available for
this product

http://www.finishlynx.com/archive/catalog/images/EXTBatt_WGLX.jpg

Includes 7LBatt & C-LynxWG-Batt

PRODUCT CATEGORY: WIND GAUGES

Full Product Description:

Part Number: **WG-SA-CTRL**



<http://www.finishlynx.com/archive/catalog/images/WG-SA-CTRL.jpg>

Stand Alone Controller for WG-Lynx for use with Field Events

PRODUCT CATEGORY: WIND GAUGES

Call for more information.

Part Number: **WG-Adapter**



<http://www.finishlynx.com/archive/catalog/images/WG-Adapter.jpg>

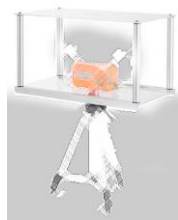
Wind Gauge Adapter Cable

PRODUCT CATEGORY: WIND GAUGES

Full Product Description:

Converts standard start cable into a wind gauge cable.

Part Number: **E730UR**



<http://www.finishlynx.com/archive/catalog/images/E730UR.jpg>

Ultrasonic Wind Gauge Rain Shield

PRODUCT CATEGORY: WIND GAUGES

Call for more information.

Part Number: E39820



<http://www.finishlynx.com/archive/catalog/images/E39820.jpg>

6" 4-Digit LED Wind Gauge Display & Countdown Timer

PRODUCT CATEGORY: WIND GAUGES

Full Product Description:

Connects directly to wind gauge. Battery operated. Tripod included.

Part Number: AD16x64Mono



<http://www.finishlynx.com/archive/catalog/images/AD16x64Mono.jpg>

16 X 64 pixel, 17mm, Red LED Graphic Scoreboard (4 wk lead)

PRODUCT CATEGORY: WIND GAUGES

Full Product Description:

Wind Gauge Display

Cables

Ethernet

Part Number: **C10BT-25**



<http://www.finishlynx.com/archive/catalog/images/C10BT-25.jpg>

10 Base T Network Cable - 25', with RJ45 Connectors

PRODUCT CATEGORY: CABLES ~ ETHERNET

Call for more information.

Part Number: **C10BT-100**



<http://www.finishlynx.com/archive/catalog/images/C10BT-100.jpg>

10 Base T Network Cable - 100' length, with RJ45 Connectors

PRODUCT CATEGORY: CABLES ~ ETHERNET

Call for more information.

Part Number: **C10BT-200**



<http://www.finishlynx.com/archive/catalog/images/C10BT-200.jpg>

10 Base T Network Cable - 200' length, with RJ45 Connectors

PRODUCT CATEGORY: CABLES ~ ETHERNET

Call for more information.

Part Number: **C10BT-300**



<http://www.finishlynx.com/archive/catalog/images/C10BT-300.jpg>

10 Base T Network Cable - 300' length, with RJ45 Connectors

PRODUCT CATEGORY: CABLES ~ ETHERNET

Call for more information.

XLR/Start

Part Number: **3A100**



<http://www.finishlynx.com/archive/catalog/images/3A100.jpg>

XLR-3 Start Cable - 500 foot

PRODUCT CATEGORY: CABLES ~ XLR/START

Full Product Description:

3 conductor 24 awg shielded cable, 500 feet long, with XLR-3 male and female connectors.

Part Number: **3A200**



<http://www.finishlynx.com/archive/catalog/images/3A200.jpg>

Facility Starting System

PRODUCT CATEGORY: CABLES ~ XLR/START

Full Product Description:

Multiple reel cabling system for an outdoor 400m facility. Allows starter to simply plug the start sensor into an "outlet" near each of the four corners of the track. 3A200 includes 2x500' cables (each on a reel), 2x250' cables (mated end to end and on a reel), 1 - 50' cable (for starter) and 3 - Y-SPL (Y splitters).

Part Number: **C43-10**



<http://www.finishlynx.com/archive/catalog/images/C43-10.jpg>

XLR-3 Start Cable - 10 foot

PRODUCT CATEGORY: CABLES ~ XLR/START

Full Product Description:

3 conductor 24 awg shielded cable 10 feet long, with XLR-3 male and female connectors.

Part Number: **C43-25**



<http://www.finishlynx.com/archive/catalog/images/C43-25.jpg>

XLR-3 Start Cable - 25 foot

PRODUCT CATEGORY: CABLES ~ XLR/START

Full Product Description:

3 conductor 24 awg shielded cable 25 feet long, with XLR-3 male and female connectors.

Part Number: **C43-50**



<http://www.finishlynx.com/archive/catalog/images/C43-50.jpg>

XLR-3 Start Cable - 50 foot

PRODUCT CATEGORY: CABLES ~ XLR/START

Full Product Description:

3 conductor 24 awg shielded cable 50 feet long, with XLR-3 male and female connectors.

Part Number: **C43-100**
<http://www.finishlynx.com/archive/catalog/images/C43-100.jpg>
XLR-3 Start Cable - 100 foot*PRODUCT CATEGORY:* CABLES ~ XLR/STARTFull Product Description:

3 conductor 24 awg shielded cable 100 feet long, with XLR-3 male and female connectors.

Part Number: **C43-200**
<http://www.finishlynx.com/archive/catalog/images/C43-200.jpg>
XLR-3 Start Cable - 200 foot*PRODUCT CATEGORY:* CABLES ~ XLR/STARTFull Product Description:

3 conductor 24 awg shielded cable 200 feet long, with XLR-3 male and female connectors.

Part Number: **C43-300**
<http://www.finishlynx.com/archive/catalog/images/C43-300.jpg>
XLR-3 Start Cable - 300 foot*PRODUCT CATEGORY:* CABLES ~ XLR/STARTFull Product Description:

3 conductor 24 awg shielded cable 300 feet long, with XLR-3 male and female connectors.

MiscPart Number: **HDMI-050**

We are sorry
but there
is currently
no image
available for
this product

<http://www.finishlynx.com/archive/catalog/images/HDMI-050.jpg>
HDMI Interface Cable 50 feet*PRODUCT CATEGORY:* CABLES ~ MISC

[Call for more information.](#)

Part Number: **B-SPL**
<http://www.finishlynx.com/archive/catalog/images/B-SPL.jpg>
Button Splitter*PRODUCT CATEGORY:* CABLES ~ MISCFull Product Description:

Allows sharing of a serial port between a capture button and another serial device.

Lynx Catalog

Part Number: **Y-SPL**



<http://www.finishlynx.com/archive/catalog/images/Y-SPL.jpg>

Y-Splitter cable

PRODUCT CATEGORY: CABLES ~ MISC

Full Product Description:

Splitter for XLR-3 Start Cable, two female and one male connector.

Part Number: **NULL**



<http://www.finishlynx.com/archive/catalog/images/NULL.jpg>

Null Modem cable

PRODUCT CATEGORY: CABLES ~ MISC

Full Product Description:

Cable for serial connection between two computers

Part Number: **451**



<http://www.finishlynx.com/archive/catalog/images/451.jpg>

Connection Box cable

PRODUCT CATEGORY: CABLES ~ MISC

Full Product Description:

DB15 Male-Female cable, 25 feet long

Part Number: **293**



<http://www.finishlynx.com/archive/catalog/images/293.jpg>

Remote Positioner Cable

PRODUCT CATEGORY: CABLES ~ MISC

Full Product Description:

DB9 Male-Male cable. 2 feet long.

Part Number: **3A201**



<http://www.finishlynx.com/archive/catalog/images/3A201.jpg>

Cord reel

PRODUCT CATEGORY: CABLES ~ MISC

Full Product Description:

Plastic cord reel for easy handling of cable.

Part Number: 149



<http://www.finishlynx.com/archive/catalog/images/149.jpg>

XLR-3 Male Cable Connector

PRODUCT CATEGORY: CABLES ~ MISC

Full Product Description:

3 pin XLR Male cable mount connector

Part Number: 148



<http://www.finishlynx.com/archive/catalog/images/148.jpg>

XLR-3 Female Cable Connector

PRODUCT CATEGORY: CABLES ~ MISC

Full Product Description:

3 pin XLR Female cable mount connector

Power

Part Number: 452



<http://www.finishlynx.com/archive/catalog/images/452.jpg>

US Power Cable, 25 feet long.

PRODUCT CATEGORY: CABLES ~ POWER

Call for more information.

Part Number: Euro_Power__



http://www.finishlynx.com/archive/catalog/images/Euro_Power_.jpg

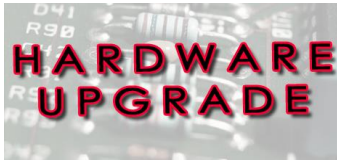
European Power Cable, 25 feet long.

PRODUCT CATEGORY: CABLES ~ POWER

Call for more information.

Service

Part Number: TR10



<http://www.finishlynx.com/archive/catalog/images/TR10.jpg>

Camera diagnostic including timer accuracy certification

PRODUCT CATEGORY: SERVICE

Full Product Description:

A complete physical and electrical camera check-up including timer accuracy certification.

Part Number: XTWRNT_1Y



http://www.finishlynx.com/archive/catalog/images/XTWRNT_1Y.jpg

1 Year Extended Product Warranty

PRODUCT CATEGORY: SERVICE

Full Product Description:

Price varies with items purchased

Part Number: XTWRNT_2Y



http://www.finishlynx.com/archive/catalog/images/XTWRNT_2Y.jpg

2 Year Extended Product Warranty

PRODUCT CATEGORY: SERVICE

Full Product Description:

Price varies with items purchased

Part Number: XTWRNT_3Y



http://www.finishlynx.com/archive/catalog/images/XTWRNT_3Y.jpg

3 Year Extended Product Warranty

PRODUCT CATEGORY: SERVICE

Full Product Description:

Price varies with items purchased

ReactTime

Wired or Wireless False Start Detection


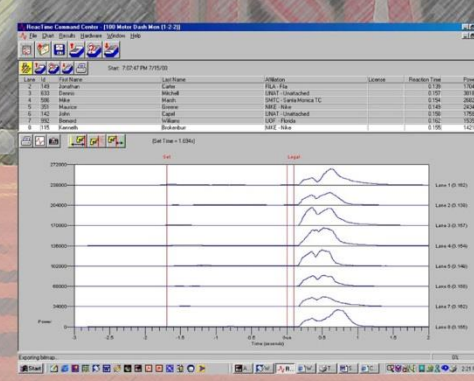
ReactTime is a modular Reaction Training System that can be expanded to a complete Championship False Start Detection System. Unlike some simpler systems, ReactTime has no "contact pads", and it cannot be tricked.

The system is easy to use and rugged. The battery or AC powered blocks are waterproof and are designed to withstand the tough demands of a track environment.

The competition ReactTime system detects false starts (as defined by IAAF rule 162.10 and USATF rule 60.18) – to an accuracy of 1/1000th of a second – and instantly signals this information to the starter.

ReactTime Software

The world's top sprinters have shown that reaction times can be improved by training – and ReactTime can be the cornerstone of that training process. When used as a stand-alone personal training system to help sprinters improve their starting technique, an individual ReactTime module can be used to record and display an athlete's gun-to-motion times to an accuracy of 1/1000th of a second.

ReactTime Training

Part Number: **7L109**



<http://www.finishlynx.com/archive/catalog/images/7L109.jpg>

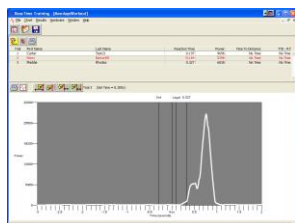
One Lane Photo eye Kit

PRODUCT CATEGORY: REACTTIME ~ REACTTIME TRAINING

Full Product Description:

Includes tripods and 50' cable.

Part Number: **7LSWTR**



<http://www.finishlynx.com/archive/catalog/images/7LSWTR.jpg>

ReactTime Training Software License

PRODUCT CATEGORY: REACTTIME ~ REACTTIME TRAINING

Full Product Description:

Allows the analyzing, storing and printing of reaction time, time-to-distance and relative power traces downloaded from one or more block sensors. Windows9x/NT/2000/XP/Vista platform.

Part Number: **7L100TC**



<http://www.finishlynx.com/archive/catalog/images/7L100TC.jpg>

ReactTime Training Case

PRODUCT CATEGORY: REACTTIME ~ REACTTIME TRAINING

Call for more information.

* **Image Disclaimer:** The images presented are informational only and are not intended as a specification. Products may vary from those illustrated and Colors may not be accurate

Lynx Catalog

Part Number: **7L205**



<http://www.finishlynx.com/archive/catalog/images/7L205.jpg>

ReactTime Start Button

PRODUCT CATEGORY: REACTIME ~ REACTIME TRAINING

[Call for more information.](#)

Part Number: **MG-DEC005**



<http://www.finishlynx.com/archive/catalog/images/MG-DEC005.jpg>

Receiver for Short Range, Single Beam Wireless Photocell

PRODUCT CATEGORY: REACTIME ~ REACTIME TRAINING

Full Product Description:

Only for use with MG-ACC089 - Not compatible with Radiolynx.

Part Number: **MG-ACC089**



<http://www.finishlynx.com/archive/catalog/images/MG-ACC089.jpg>

Short Range, Single Beam Wireless Photocell

PRODUCT CATEGORY: REACTIME ~ REACTIME TRAINING

Full Product Description:

Rechargeable, single beam photocell with internal radio transmitter. 15 meter optical range - Not compatible with Radiolynx.

Part Number: **7L100**



<http://www.finishlynx.com/archive/catalog/images/7L100.jpg>

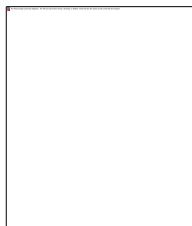
Block Sensor

PRODUCT CATEGORY: REACTIME

Full Product Description:

Attaches to most manufacturer's starting blocks. This sensor can be used for training or competition. Measures athlete's reaction time and relative power out of the blocks.

Part Number: **7L102**



<http://www.finishlynx.com/archive/catalog/images/7L102.jpg>

Block Mounted Speaker

PRODUCT CATEGORY: REACTIME

[Call for more information.](#)

Part Number: **7L103**



<http://www.finishlynx.com/archive/catalog/images/7L103.jpg>

False Start Command Center

PRODUCT CATEGORY: REACTIME

Full Product Description:

Connects up to 10 Block Sensors to create a complete False Start Detection and Reaction Time System.

Part Number: 7L104



<http://www.finishlynx.com/archive/catalog/images/7L104.jpg>

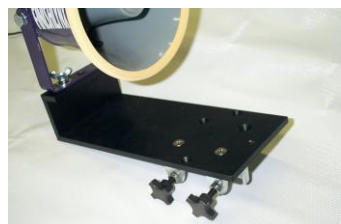
Wireless Option

PRODUCT CATEGORY: REACTIME

Full Product Description:

Allows wireless communication between block sensors and the command center. One 7L104 required for each 7L100 block sensor and each 7L103 command center.

Part Number: 7L105



<http://www.finishlynx.com/archive/catalog/images/7L105.jpg>

Block Sensor Clamp

PRODUCT CATEGORY: REACTIME

Call for more information.

Part Number: 7L106



<http://www.finishlynx.com/archive/catalog/images/7L106.jpg>

Starter's Headset

PRODUCT CATEGORY: REACTIME

Call for more information.

Part Number: MG-TEL003

We are sorry
but there
is currently
no image
available for
this product

<http://www.finishlynx.com/archive/catalog/images/MG-TEL003.jpg>

uCom Headset Amplifier

PRODUCT CATEGORY: REACTIME

Call for more information.

Part Number: 7L107



<http://www.finishlynx.com/archive/catalog/images/7L107.jpg>

Reactime Line Printer #DPU414 - Uses paper roll # SS112-25A

PRODUCT CATEGORY: REACTIME

Call for more information.

* **Image Disclaimer:** The images presented are informational only and are not intended as a specification. Products may vary from those illustrated and Colors may not be accurate

Lynx Catalog

Part Number: **SS112-25A**

We are sorry
but there
is currently
no image
available for
this product

<http://www.finishlynx.com/archive/catalog/images/SS112-25A.jpg>

Paper roll for ReactTime DPU414 Printer (Part# 7L107)

PRODUCT CATEGORY: REACTIME

Call for more information.

Part Number: **7L108**



<http://www.finishlynx.com/archive/catalog/images/7L108.jpg>

Block Sensor Cable (5.5meter)

PRODUCT CATEGORY: REACTIME

Call for more information.

Part Number: **7L108L**



<http://www.finishlynx.com/archive/catalog/images/7L108L.jpg>

Block Sensor Cable (13meter)

PRODUCT CATEGORY: REACTIME

Call for more information.

Part Number: **7L108CC**



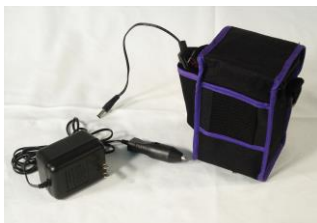
<http://www.finishlynx.com/archive/catalog/images/7L108CC.jpg>

Command Center Cable (30 meter)

PRODUCT CATEGORY: REACTIME

Call for more information.

Part Number: **7LBATT**



<http://www.finishlynx.com/archive/catalog/images/7LBATT.jpg>

External Battery Pack for ReactTime Block Sensor, Lynx #7L100

PRODUCT CATEGORY: REACTIME

Call for more information.

Part Number: **7LPWR**
<http://www.finishlynx.com/archive/catalog/images/7LPWR.jpg>
ReactTime False Start System Power Supply & Charger*PRODUCT CATEGORY:* REACTIMEFull Product Description:

Allows charging of up to 10 block sensors simultaneously.

Part Number: **7LFSC**
<http://www.finishlynx.com/archive/catalog/images/7LFSC.jpg>
ReactTime System Case*PRODUCT CATEGORY:* REACTIMEFull Product Description:

Holds 6 Block Sensors.

Part Number: **7LSC**
<http://www.finishlynx.com/archive/catalog/images/7LSC.jpg>
Speaker Case*PRODUCT CATEGORY:* REACTIMEFull Product Description:

Holds 4 Block Mounted Speakers.

Part Number: **7LCART**
<http://www.finishlynx.com/archive/catalog/images/7LCART.jpg>
False Start Operating & Storage Unit*PRODUCT CATEGORY:* REACTIME

Call for more information.

Part Number: **7LSWFS**
<http://www.finishlynx.com/archive/catalog/images/7LSWFS.jpg>
ReactTime Championship Software License*PRODUCT CATEGORY:* REACTIMEFull Product Description:

Allows the analyzing, storing and printing of reaction time and relative power traces downloaded from the Command Center. Can be used to send reaction times to FinishLynx for inclusion in the data flow. Windows9x/NT/2000/XP/Vista platform.

Lynx Catalog

Part Number: **7LDOC**



<http://www.finishlynx.com/archive/catalog/images/7LDOC.jpg>

ReactTime CD and Documentation

PRODUCT CATEGORY: REACTIME

Call for more information.

Part Number: **7L-SERIAL**



<http://www.finishlynx.com/archive/catalog/images/7L-SERIAL.jpg>

ReactTime Serial Cable

PRODUCT CATEGORY: REACTIME

Full Product Description:

Connects Command Center to ReactTime computer serial port.

Part Number: **7L-SIGNAL**



<http://www.finishlynx.com/archive/catalog/images/7L-SIGNAL.jpg>

ReactTime Signal Input Cable

PRODUCT CATEGORY: REACTIME

Full Product Description:

Allows connection of devices such as gun sensors and photocells to a Block Sensor.

Part Number: **7L-SPLITTER**



<http://www.finishlynx.com/archive/catalog/images/7L-SPLITTER.jpg>

ReactTime Input Splitter

PRODUCT CATEGORY: REACTIME

Full Product Description:

Allows a single gun sensor on start button to activate 2 block sensors.

Part Number: **3L900BS**



<http://www.finishlynx.com/archive/catalog/images/3L900BS.jpg>

RadioLynx to Block Sensor Cable

PRODUCT CATEGORY: REACTIME

Call for more information.

Part Number: **3L900CC**



<http://www.finishlynx.com/archive/catalog/images/3L900CC.jpg>

RadioLynx to Command Center Cable

PRODUCT CATEGORY: REACTIME

Call for more information.

Part Number: 730155



<http://www.finishlynx.com/archive/catalog/images/730155.jpg>

IAAF Certified Starting Blocks

PRODUCT CATEGORY: REACTIME

Call for more information.

Part Number: 7L100-B



<http://www.finishlynx.com/archive/catalog/images/7L100-B.jpg>

Spare ReactTime Internal Battery

PRODUCT CATEGORY: REACTIME

Call for more information.

ResultTV

Part Number: **ResultTV-U**



<http://www.finishlynx.com/archive/catalog/images/ResultTV-U.jpg>

ResultTV Software License with USB HW key

PRODUCT CATEGORY: RESULTTV

Full Product Description:

When Combined with a Scan Converter, allows Results and Running Time to be displayed dynamically to CCTV and other TV output display devices. Connects via network or serial port to any PC running FinishLynx.

Part Number: **ResultTV-BR**



<http://www.finishlynx.com/archive/catalog/images/ResultTV-BR.jpg>

ResultTV Software (Broadcast Version) License with USB HW key

PRODUCT CATEGORY: RESULTTV

Full Product Description:

Broadcast version suppresses Lynx Logo. When Combined with a Scan Converter, allows Results and Running Time to be displayed dynamically to CCTV and other TV output display devices. Connects via network or serial port to any PC running FinishLynx.

Part Number: **ResultTV-BR_Upgrade**

We are sorry
but there
is currently
no image
available for
this product

http://www.finishlynx.com/archive/catalog/images/ResultTV-BR_Upgrade.jpg

ResultTV (Broadcast Version) Upgrade to ResultTV-U or -P

PRODUCT CATEGORY: RESULTTV

Call for more information.

Part Number: **ScanConv**



<http://www.finishlynx.com/archive/catalog/images/ScanConv.jpg>

Broadcast Quality NTSC/PAL scan converter

PRODUCT CATEGORY: RESULTTV

Full Product Description:

Generates NTSC or PAL video suitable for sending to a production truck for TV broadcast. Fully genlockable. Connects externally to a computer.

Part Number: **ScanConv__D**



http://www.finishlynx.com/archive/catalog/images/ScanConv__D.jpg

Broadcast Quality NTSC/PAL scan converter with SD/HD-SDI Out

PRODUCT CATEGORY: RESULTTV

Full Product Description:

Generates NTSC or PAL video suitable for sending to a production truck for TV broadcast. Fully genlockable with SDI Output. Connects externally to a computer.

FieldLynx

Part Number: 6LSW7U



<http://www.finishlynx.com/archive/catalog/images/6LSW7U.jpg>

Net Exchange Server license (w/ USB HW Key)

PRODUCT CATEGORY: FIELDLYNX

Full Product Description:

NetExchange Server allows FieldLynx, ClerkLynx and AirCyber applications to retrieve and send Lynx Database files to the competition management computer.

Part Number: 6LSW_FL



http://www.finishlynx.com/archive/catalog/images/6LSW_FL.jpg

FieldLynx Site License - 1 Seat for use with NetExchange

PRODUCT CATEGORY: FIELDLYNX

Call for more information.

Part Number: 6LSW_CL



http://www.finishlynx.com/archive/catalog/images/6LSW_CL.jpg

ClerkLynx Site License - 1 Seat for use with NetExchange

PRODUCT CATEGORY: FIELDLYNX

Call for more information.

Part Number: 6LSW1



<http://www.finishlynx.com/archive/catalog/images/6LSW1.jpg>

FieldLynx Scoreboard/Printer Interface Plug-in site license

PRODUCT CATEGORY: FIELDLYNX

Full Product Description:

Allows FieldLynx to transfer results information to ResultTV, scoreboard displays and FieldLynx printer.

Part Number: 6LSW2



<http://www.finishlynx.com/archive/catalog/images/6LSW2.jpg>

FieldLynx Wind Gauge software plug-in site license

PRODUCT CATEGORY: FIELDLYNX

Full Product Description:

Allows FieldLynx to communicate with a Wind Gauge

Part Number: 6LSW3



<http://www.finishlynx.com/archive/catalog/images/6LSW3.jpg>

FieldLynx LaserLynx plug-in site license

PRODUCT CATEGORY: FIELDLYNX

Full Product Description:

Allows connection of LaserLynx EDM directly to FieldLynx.

Lynx Catalog

Part Number: **6LSW8**



<http://www.finishlynx.com/archive/catalog/images/6LSW8.jpg>

FieldLynx Lite for Windows, includes WG, Laser & SB

PRODUCT CATEGORY: FIELDLYNX

Full Product Description:

Allows field interfacing to WG-Lynx, WG-Sonic, Lasers & Scoreboards

Part Number: **6LWinNet**



<http://www.finishlynx.com/archive/catalog/images/6LWinNet.jpg>

Netbook - Windows OS, USB Ports, Wired/Wireless Ethernet

PRODUCT CATEGORY: FIELDLYNX

Call for more information.

Part Number: **6LWinTab**



<http://www.finishlynx.com/archive/catalog/images/6LWinTab.jpg>

Windows Tablet with Wifi & USB port(s)

PRODUCT CATEGORY: FIELDLYNX

Call for more information.

Part Number: **6LPRT**



<http://www.finishlynx.com/archive/catalog/images/6LPRT.jpg>

FieldLynx Serial Printer

PRODUCT CATEGORY: FIELDLYNX

Full Product Description:

Serial Results printer for use with the scoreboard & printer plug-in.

LaserLynx



Part Number: 6L209

Complete LaserLynx Pro III Package

PRODUCT CATEGORY: LASERLYNX

Full Product Description:

Laser based electronic distance measurement (EDM) system. Meets or exceeds IAAF accuracy requirements. Includes tripod, prism, prism pole, on-board battery and data cable.



<http://www.finishlynx.com/archive/catalog/images/6L209.jpg>

Part Number: TS50F

Spare Aluminum Tripod

PRODUCT CATEGORY: LASERLYNX

Call for more information.



<http://www.finishlynx.com/archive/catalog/images/TS50F.jpg>

Lynx Catalog

Part Number: **MPU1**



<http://www.finishlynx.com/archive/catalog/images/MPU1.jpg>

Spare Prism Kit

PRODUCT CATEGORY: LASERLYNX

Call for more information.

Part Number: **PC21**



<http://www.finishlynx.com/archive/catalog/images/PC21.jpg>

Spare Prism Pole

PRODUCT CATEGORY: LASERLYNX

Call for more information.

Part Number: **S62005**



<http://www.finishlynx.com/archive/catalog/images/S62005.jpg>

Spare Battery for LaserLynx Pro III, Pro II, LaserLynx HS II

PRODUCT CATEGORY: LASERLYNX

Call for more information.

Part Number: **S50660**



<http://www.finishlynx.com/archive/catalog/images/S50660.jpg>

Spare Data Cable for LaserLynx Pro II, Pro III and HS II

PRODUCT CATEGORY: LASERLYNX

Call for more information.

Lap & Split Timing

Manual Split Timing

Part Number: **MG-REI201**



<http://www.finishlynx.com/archive/catalog/images/MG-REI201.jpg>

REI2 Programmable Chronometer

PRODUCT CATEGORY: LAP & SPLIT TIMING ~ MANUAL SPLIT TIMING

Full Product Description:

Acts as a LapTime device in a FinishLynx system or can be run standalone with a variety of internal programs.

Part Number: **MG-ACC075**



<http://www.finishlynx.com/archive/catalog/images/MG-ACC075.jpg>

Battery Charger for REI2

PRODUCT CATEGORY: LAP & SPLIT TIMING ~ MANUAL SPLIT TIMING

Call for more information.

Part Number: **MG-BAG005**



<http://www.finishlynx.com/archive/catalog/images/MG-BAG005.jpg>

Holding Bag for REI2

PRODUCT CATEGORY: LAP & SPLIT TIMING ~ MANUAL SPLIT TIMING

Call for more information.

Part Number: **MG-CAB001**



<http://www.finishlynx.com/archive/catalog/images/MG-CAB001.jpg>

REI2 to Computer Cable

PRODUCT CATEGORY: LAP & SPLIT TIMING ~ MANUAL SPLIT TIMING

Call for more information.

Part Number: **MG-ACC073**



<http://www.finishlynx.com/archive/catalog/images/MG-ACC073.jpg>

LinkPod with 8 Inputs

PRODUCT CATEGORY: LAP & SPLIT TIMING ~ MANUAL SPLIT TIMING

Full Product Description:

Allows 8 switch inputs to REI2. Up to 10 can be connected in serial.

Part Number: **MG-ACC173**



<http://www.finishlynx.com/archive/catalog/images/MG-ACC173.jpg>

Amplified LinkPod with 8 Inputs

PRODUCT CATEGORY: LAP & SPLIT TIMING ~ MANUAL SPLIT TIMING

Full Product Description:

One required for longer range applications such as rowing/canoeing.

Part Number: **MG-ACC107**



<http://www.finishlynx.com/archive/catalog/images/MG-ACC107.jpg>

3 Button Keypad with 10m Cord

PRODUCT CATEGORY: LAP & SPLIT TIMING ~ MANUAL SPLIT TIMING

Call for more information.

Part Number: **MG-CAB094**



<http://www.finishlynx.com/archive/catalog/images/MG-CAB094.jpg>

Cable LinkPod-LinkPod, 2.6m

PRODUCT CATEGORY: LAP & SPLIT TIMING ~ MANUAL SPLIT TIMING

Call for more information.

Part Number: **MG-CAB092**



<http://www.finishlynx.com/archive/catalog/images/MG-CAB092.jpg>

Cable REI2-LinkPod, 5 meter

PRODUCT CATEGORY: LAP & SPLIT TIMING ~ MANUAL SPLIT TIMING

Call for more information.

Part Number: **MG-CAB086**



<http://www.finishlynx.com/archive/catalog/images/MG-CAB086.jpg>

Cable REI2-LinkPod, 20 meter

PRODUCT CATEGORY: LAP & SPLIT TIMING ~ MANUAL SPLIT TIMING

Call for more information.

Part Number: 1A209LAP



<http://www.finishlynx.com/archive/catalog/images/1A209LAP.jpg>

LinkPod Pushbutton

PRODUCT CATEGORY: LAP & SPLIT TIMING ~ MANUAL SPLIT TIMING

Call for more information.

Part Number: MG-CAB121

We are sorry
but there
is currently
no image
available for
this product

<http://www.finishlynx.com/archive/catalog/images/MG-CAB121.jpg>

Cable REI2 Serial Port - Decradio

PRODUCT CATEGORY: LAP & SPLIT TIMING ~ MANUAL SPLIT TIMING

Call for more information.

Active Transponders

Part Number: LAP15R017



<http://www.finishlynx.com/archive/catalog/images/LAP15R017.jpg>

Decoder with Cabling

PRODUCT CATEGORY: LAP & SPLIT TIMING ~ ACTIVE
TRANSPONDERS

Full Product Description:

Acts as a LapTime device in a FinishLynx system. Serial or Ethernet Interface.

Part Number: LAP30R063



<http://www.finishlynx.com/archive/catalog/images/LAP30R063.jpg>

Detection Loop w/ 12m Loop and 5m Coax

PRODUCT CATEGORY: LAP & SPLIT TIMING ~ ACTIVE
TRANSPONDERS

Full Product Description:

Covers up to 36ft wide finish line

Part Number: LAP10R031



<http://www.finishlynx.com/archive/catalog/images/LAP10R031.jpg>

Transponder

PRODUCT CATEGORY: LAP & SPLIT TIMING ~ ACTIVE
TRANSPONDERS

Call for more information.

Lynx Catalog

Part Number: **LAP40R014**



<http://www.finishlynx.com/archive/catalog/images/LAP40R014.jpg>

Neoprene Ankle Strap for Transponder

PRODUCT CATEGORY: LAP & SPLIT TIMING ~ ACTIVE
TRANSPONDERS

Call for more information.

Part Number: **5LSW1**



<http://www.finishlynx.com/archive/catalog/images/5LSW1.jpg>

TrackerLynx Software License

PRODUCT CATEGORY: LAP & SPLIT TIMING ~ ACTIVE
TRANSPONDERS

Full Product Description:

Stand alone software application for generating real time results in situations where FinishLynx is not in use.

Passive Tags

Part Number: **TL-IP30-00**



<http://www.finishlynx.com/archive/catalog/images/TL-IP30-00.jpg>

Elite Reader Kit (1) 4 - 2.4M x1.2M Mats

PRODUCT CATEGORY: LAP & SPLIT TIMING ~ PASSIVE TAGS

Full Product Description:

Kit includes: Elite Reader, Mains Power Supply, Power Cord, Ethernet Crossover Cable, External beeper and 4 - 2.4M x1.2M Mats

Part Number: **TL-IP30-01**



<http://www.finishlynx.com/archive/catalog/images/TL-IP30-01.jpg>

Elite Reader Kit (1) 2 - 5.0M x1.2M Mats

PRODUCT CATEGORY: LAP & SPLIT TIMING ~ PASSIVE TAGS

Full Product Description:

Kit includes: Elite Reader, Mains Power Supply, Power Cord, Ethernet Crossover Cable, External beeper and 2 - 5.0M x 1.2M Mats

Part Number: **TL-IP30-02**



<http://www.finishlynx.com/archive/catalog/images/TL-IP30-02.jpg>

Lite Reader Kit 2 - 2.4M x 1.2M Mats

PRODUCT CATEGORY: LAP & SPLIT TIMING ~ PASSIVE TAGS

Full Product Description:

Kit includes: Lite Reader, Battery Charger, Power Supply Cable, Ethernet Cable, USB Serial Console Cable, USB Flash Drive, 2 - 2.4M x 1.2M Mats

Part Number: **TL-IP30-03**



<http://www.finishlynx.com/archive/catalog/images/TL-IP30-03.jpg>

Accessory Starter Kit (TL-IP11-07 + TL-IP01-03)

PRODUCT CATEGORY: LAP & SPLIT TIMING ~ PASSIVE TAGS

Full Product Description:

Kit includes: Integrated Test Tag & USB Registration Reader

Part Number: TL-IP01-00



<http://www.finishlynx.com/archive/catalog/images/TL-IP01-00.jpg>

Elite Reader - High end tag Reader System

PRODUCT CATEGORY: LAP & SPLIT TIMING ~ PASSIVE TAGS

Full Product Description:

for interfacing with up to 4 - 2.4M x 1.2M Mats

Part Number: TL-IP01-01



<http://www.finishlynx.com/archive/catalog/images/TL-IP01-01.jpg>

Lite Reader - Tag Reader System

PRODUCT CATEGORY: LAP & SPLIT TIMING ~ PASSIVE TAGS

Full Product Description:

Interfaces with up to 2 - 2.4M x 1.2M Mats

Part Number: TL-IP01-03



<http://www.finishlynx.com/archive/catalog/images/TL-IP01-03.jpg>

USB Registration Reader

PRODUCT CATEGORY: LAP & SPLIT TIMING ~ PASSIVE TAGS

Full Product Description:

Short range desk top reader for registration pre/post even tag processing

Part Number: TL-IP11-07

We are sorry
but there
is currently
no image
available for
this product

<http://www.finishlynx.com/archive/catalog/images/TL-IP11-07.jpg>

Integrated Test Tag

PRODUCT CATEGORY: LAP & SPLIT TIMING ~ PASSIVE TAGS

Full Product Description:

Allows Reader verification w/o mats in place

Part Number: TL-IP11-03



<http://www.finishlynx.com/archive/catalog/images/TL-IP11-03.jpg>

Standard AC power supply for Elite Readers

PRODUCT CATEGORY: LAP & SPLIT TIMING ~ PASSIVE TAGS

Full Product Description:

Part Number: TL-IP11-01



<http://www.finishlynx.com/archive/catalog/images/TL-IP11-01.jpg>

Fast charger for the Elite Reader Systems

PRODUCT CATEGORY: LAP & SPLIT TIMING ~ PASSIVE TAGS

Full Product Description:

Cuts internal battery charge time from 9h to 3h. Can be used as an AC source for Elite Reader Systems

Part Number: TL-IP11-04



<http://www.finishlynx.com/archive/catalog/images/TL-IP11-04.jpg>

DC power cable to allow external battery connection

PRODUCT CATEGORY: LAP & SPLIT TIMING ~ PASSIVE TAGS

Full Product Description:

Part Number: TL-IP11-02



<http://www.finishlynx.com/archive/catalog/images/TL-IP11-02.jpg>

External buzzer for IP01 Reader Systems

PRODUCT CATEGORY: LAP & SPLIT TIMING ~ PASSIVE TAGS

Full Product Description:

allowing audible indication of athlete detection

Part Number: TL-IF02-02

We are sorry but there is currently no image available for this product

<http://www.finishlynx.com/archive/catalog/images/TL-IF02-02.jpg>

High Speed antenna (Pair) for use with P01 series Readers

PRODUCT CATEGORY: LAP & SPLIT TIMING ~ PASSIVE TAGS

Full Product Description:

Includes 2 antenna bars with 5m & 10m antenna options

Part Number: TL-IS02-01



<http://www.finishlynx.com/archive/catalog/images/TL-IS02-01.jpg>

2.4Mx1.2M Blue Detection Mat for IP01 Reader - 10Meter Tail

PRODUCT CATEGORY: LAP & SPLIT TIMING ~ PASSIVE TAGS

Call for more information.

Part Number: TL-IS02-04



<http://www.finishlynx.com/archive/catalog/images/TL-IS02-04.jpg>

5.0Mx1.2M Blue Detection Mat for IP01 Reader - 5Meter Tail

PRODUCT CATEGORY: LAP & SPLIT TIMING ~ PASSIVE TAGS

Full Product Description:

5 Meter Cable

Part Number: TL-IF03-00


<http://www.finishlynx.com/archive/catalog/images/TL-IF03-00.jpg>
Power Tag - Read rates to 70km/h for use with IF02 Antennas
PRODUCT CATEGORY: LAP & SPLIT TIMING ~ PASSIVE TAGS

Call for more information.

Part Number: TL-IS03-00


<http://www.finishlynx.com/archive/catalog/images/TL-IS03-00.jpg>
Shoe mount passive tag for use with IS02 series mat antennas
PRODUCT CATEGORY: LAP & SPLIT TIMING ~ PASSIVE TAGS

Call for more information.

Part Number: TL-IS03-Vol


<http://www.finishlynx.com/archive/catalog/images/TL-IS03-Vol.jpg>
Vol Pricing for TL-IS03-00 - Call for pricing
PRODUCT CATEGORY: LAP & SPLIT TIMING ~ PASSIVE TAGS

Full Product Description:

Breaks at 2.5K, 5K, 10K, 15K, 20K, 25K, 30K, 50K

Part Number: TL-IS03-01


<http://www.finishlynx.com/archive/catalog/images/TL-IS03-01.jpg>
Multi-Sport tag for use in multi-sport events
PRODUCT CATEGORY: LAP & SPLIT TIMING ~ PASSIVE TAGS

Call for more information.

Part Number: TL-IS20-00


<http://www.finishlynx.com/archive/catalog/images/TL-IS20-00.jpg>
Ankle Strap for use with multi-sport tag
PRODUCT CATEGORY: LAP & SPLIT TIMING ~ PASSIVE TAGS

Call for more information.

Timing Synchronization

Part Number: **MG-SYN001**



<http://www.finishlynx.com/archive/catalog/images/MG-SYN001.jpg>

MicroSync - External GPS Synchronizer

PRODUCT CATEGORY: TIMING SYNCHRONIZATION

Full Product Description:

Includes bag

Part Number: **MG-ACC120**

We are sorry
but there
is currently
no image
available for
this product

<http://www.finishlynx.com/archive/catalog/images/MG-ACC120.jpg>

MG-SYN001 Battery Charger

PRODUCT CATEGORY: TIMING SYNCHRONIZATION

Full Product Description:

For use with MG-SYN001

Part Number: **MG-SYN001_K**

We are sorry
but there
is currently
no image
available for
this product

http://www.finishlynx.com/archive/catalog/images/MG-SYN001_K.jpg

External Synchronization Kit

PRODUCT CATEGORY: TIMING SYNCHRONIZATION

Full Product Description:

Includes MG-SYN001, bag, power supply, power cable and data cable

Displays

LED

Part Number: UTabLED_L



http://www.finishlynx.com/archive/catalog/images/UTabLED_L.jpg

Microtab LED Lite Kit - 16x64 Display - Stand alone

PRODUCT CATEGORY: DISPLAYS ~ LED

Full Product Description:

Includes: Display, power supply, internal battery, data cable & carry case

Part Number: UTabLED



<http://www.finishlynx.com/archive/catalog/images/UTabLED.jpg>

Microtab LED Kit - 16X96 Display - Intelligent connection

PRODUCT CATEGORY: DISPLAYS ~ LED

Full Product Description:

Includes: Display, power supply, internal battery, data cable & carry case

Part Number: UGraphLED



<http://www.finishlynx.com/archive/catalog/images/UGraphLED.jpg>

Micrograph LED Kit - 32x128 Display - Intelligent connection

PRODUCT CATEGORY: DISPLAYS ~ LED

Full Product Description:

Includes: Display, power supply, internal battery, data cable & carry case

Part Number: UTabLED_3S



http://www.finishlynx.com/archive/catalog/images/UTabLED_3S.jpg

Microtab LED 3 Sided Lap Counter Display Kit

PRODUCT CATEGORY: DISPLAYS ~ LED

Full Product Description:

Includes: Display, power supply, internal battery, keypad & carry case

Part Number: MG-TAL001



<http://www.finishlynx.com/archive/catalog/images/MG-TAL001.jpg>

Microtab LED Lite Display 16X64 LED Matrix Display board

PRODUCT CATEGORY: DISPLAYS ~ LED

Full Product Description:

Stand alone module

Lynx Catalog

Part Number: **MG-TAL002**



<http://www.finishlynx.com/archive/catalog/images/MG-TAL002.jpg>

Microtab LED Display 16X96 LED Matrix Display board

PRODUCT CATEGORY: DISPLAYS ~ LED

Full Product Description:

Intelligent, vertical module connection system

Part Number: **MG-TAL003**



<http://www.finishlynx.com/archive/catalog/images/MG-TAL003.jpg>

Micrograph LED Display 32x128 LED Matrix Display board

PRODUCT CATEGORY: DISPLAYS ~ LED

Full Product Description:

Intelligent, vertical & horizontal module connection system

Part Number: **MG-TAL004**



<http://www.finishlynx.com/archive/catalog/images/MG-TAL004.jpg>

Microtab 3 Face LED Lap Counter Display

PRODUCT CATEGORY: DISPLAYS ~ LED

Call for more information.

Part Number: **MG-CAB156**

We are sorry
but there
is currently
no image
available for
this product

<http://www.finishlynx.com/archive/catalog/images/MG-CAB156.jpg>

Power Cable for UTab & UGraph LED Displays

PRODUCT CATEGORY: DISPLAYS ~ LED

Call for more information.

Part Number: **MG-CAB010**



<http://www.finishlynx.com/archive/catalog/images/MG-CAB010.jpg>

60' Cable Display Board to PC

PRODUCT CATEGORY: DISPLAYS ~ LED

Call for more information.

Part Number: **MG-ACC147**



<http://www.finishlynx.com/archive/catalog/images/MG-ACC147.jpg>

Microtab LED 48V Power Supply for Microtab and Microtab Lite

PRODUCT CATEGORY: DISPLAYS ~ LED

Call for more information.

Part Number: **MG-ACC161**



<http://www.finishlynx.com/archive/catalog/images/MG-ACC161.jpg>

Micrograph LED 48V Power Supply

PRODUCT CATEGORY: DISPLAYS ~ LED

Call for more information.

Part Number: **MG-ACC163**

We are sorry
but there
is currently
no image
available for
this product

<http://www.finishlynx.com/archive/catalog/images/MG-ACC163.jpg>

Microtab LED Internal Battery for Microtab & Microtab Lite

PRODUCT CATEGORY: DISPLAYS ~ LED

Call for more information.

Part Number: **MG-ACC164**



<http://www.finishlynx.com/archive/catalog/images/MG-ACC164.jpg>

WiFi Option for Microtab and Micrograph LED Displays

PRODUCT CATEGORY: DISPLAYS ~ LED

Call for more information.

Part Number: **MG-ACC165**

We are sorry
but there
is currently
no image
available for
this product

<http://www.finishlynx.com/archive/catalog/images/MG-ACC165.jpg>

Micrograph LED Internal Battery for Micrograph LED

PRODUCT CATEGORY: DISPLAYS ~ LED

Call for more information.

Lynx Catalog

Part Number: **MG-ACC167**

We are sorry
but there
is currently
no image
available for
this product

<http://www.finishlynx.com/archive/catalog/images/MG-ACC167.jpg>

2 Button Keypad

PRODUCT CATEGORY: DISPLAYS ~ LED

Call for more information.

Part Number: **MG-BAG035**



<http://www.finishlynx.com/archive/catalog/images/MG-BAG035.jpg>

Micrograph LED Carry Bag

PRODUCT CATEGORY: DISPLAYS ~ LED

Call for more information.

Part Number: **MG-BAG036**



<http://www.finishlynx.com/archive/catalog/images/MG-BAG036.jpg>

Microtab LED Carry Bag for Microtab and Microtab Lite

PRODUCT CATEGORY: DISPLAYS ~ LED

Call for more information.

Part Number: **MG-BAG038**

We are sorry
but there
is currently
no image
available for
this product

<http://www.finishlynx.com/archive/catalog/images/MG-BAG038.jpg>

Bag for 3 Sided Lap Counter

PRODUCT CATEGORY: DISPLAYS ~ LED

Call for more information.

Part Number: **12076XLC-RD**



<http://www.finishlynx.com/archive/catalog/images/12076XLC-RD.jpg>

6" 6-Digit LED Double Sided Display (90-264V)

PRODUCT CATEGORY: DISPLAYS ~ LED

Full Product Description:

Running time clock for use with FinishLynx or standalone. Includes 50' serial cable and internal battery. Uses TS02 stand.

Part Number: **6076XLC-RD**



<http://www.finishlynx.com/archive/catalog/images/6076XLC-RD.jpg>

6" 6-Digit LED Display (90-264V)

PRODUCT CATEGORY: DISPLAYS ~ LED

Full Product Description:

Running time clock for use with FinishLynx or standalone. Includes 50' serial cable and internal battery. Uses TS02 stand.

Part Number: 5079XLC-RD


<http://www.finishlynx.com/archive/catalog/images/5079XLC-RD.jpg>
9" 5-Digit LED Display (90-264V)

PRODUCT CATEGORY: DISPLAYS ~ LED

Full Product Description:

Running time clock for use with FinishLynx or standalone. Includes 50' serial cable and internal battery. Uses TS02 stand.

Part Number: 6079XLC-RD


<http://www.finishlynx.com/archive/catalog/images/6079XLC-RD.jpg>
9" 6-Digit LED Display (90-264V)

PRODUCT CATEGORY: DISPLAYS ~ LED

Full Product Description:

Running time clock for use with FinishLynx or standalone. Includes 50' serial cable and internal battery. Uses TS02 stand.

Part Number: 12079XLC-RD


<http://www.finishlynx.com/archive/catalog/images/12079XLC-RD.jpg>
9" 6-Digit LED Double Sided Display (90-264V)

PRODUCT CATEGORY: DISPLAYS ~ LED

Full Product Description:

Running time clock for use with FinishLynx or standalone. Includes 50' serial cable and internal battery. Uses TS02 stand.

Part Number: SW-2101


<http://www.finishlynx.com/archive/catalog/images/SW-2101.jpg>
10" 8-Digit LED Display

PRODUCT CATEGORY: DISPLAYS ~ LED

Full Product Description:

One digit of place, one digit of Lane and 6 digits of time. Does not have standalone running time capability. Please specify voltage when ordering. Uses TS02 stand.

Part Number: TI-2021


<http://www.finishlynx.com/archive/catalog/images/TI-2021.jpg>
10" 7-Digit LED Display for Field Events

PRODUCT CATEGORY: DISPLAYS ~ LED

Full Product Description:

Alternates between three digits of competitor ID plus attempt number and performance in metric or imperial. Works with FieldLynx. Can also be used as a running time clock with FinishLynx or standalone. Please specify voltage when ordering. Uses TS02 stand.

Part Number: AD16x128Mono


<http://www.finishlynx.com/archive/catalog/images/AD16x128Mono.jpg>
16 X 128 pixel, 17mm, Red LED Graphic Scoreboard (4 wk lead)

PRODUCT CATEGORY: DISPLAYS ~ LED

Full Product Description:

Lynx Catalog

Part Number: **AD32x128Mono**



<http://www.finishlynx.com/archive/catalog/images/AD32x128Mono.jpg>

32 X 128 pixel, 17mm, Red LED Graphic Scoreboard (4 wk lead)

PRODUCT CATEGORY: DISPLAYS ~ LED

Full Product Description:

Part Number: **AD64x128Mono**

We are sorry
but there
is currently
no image
available for
this product

<http://www.finishlynx.com/archive/catalog/images/AD64x128Mono.jpg>

64 X 128 pixel, 17mm, Red LED Graphic Scoreboard (4 wk lead)

PRODUCT CATEGORY: DISPLAYS ~ LED

Call for more information.

Part Number: **LCB2-25-1**



<http://www.finishlynx.com/archive/catalog/images/LCB2-25-1.jpg>

2-Digit Single-Sided Lap Counter 25cm with Tripod

PRODUCT CATEGORY: DISPLAYS ~ LED

Full Product Description:

Includes bell, internal battery and 100-240V charger.

Part Number: **LCB2-25-3**



<http://www.finishlynx.com/archive/catalog/images/LCB2-25-3.jpg>

2-Digit Three-Sided Lap Counter 25cm with Tripod

PRODUCT CATEGORY: DISPLAYS ~ LED

Full Product Description:

Includes bell, internal battery and 100-240V charger.

Part Number: **LCB3-25-3**



<http://www.finishlynx.com/archive/catalog/images/LCB3-25-3.jpg>

3-Digit Three-Sided Lap Counter 25cm with Tripod

PRODUCT CATEGORY: DISPLAYS ~ LED

Full Product Description:

Includes bell, internal battery and 100-240V charger.

Part Number: **Fld_Dsply_1S**



http://www.finishlynx.com/archive/catalog/images/Fld_Dsply_1S.jpg

Infield Video Display & Frame - 1 Sided

PRODUCT CATEGORY: DISPLAYS ~ LED

Full Product Description:

Upgradeable to 2 or 3 sided

Part Number: **Fld_Dsply_2S**



http://www.finishlynx.com/archive/catalog/images/Fld_Dsply_2S.jpg

Infield Video Display & Frame - 2 Sided

PRODUCT CATEGORY: DISPLAYS ~ LED

Full Product Description:

Upgradeable to 3 sided, Wheel Assy available (See Fld_Dsply_WA)

Part Number: **Fld_Dsply_3S**



http://www.finishlynx.com/archive/catalog/images/Fld_Dsply_3S.jpg

Infield Video Display & Frame - 3 Sided

PRODUCT CATEGORY: DISPLAYS ~ LED

Full Product Description:

Wheel Assy available (See Fld_Dsply_WA)

Part Number: **Fld_Dsply_WA**

We are sorry
but there
is currently
no image
available for
this product

http://www.finishlynx.com/archive/catalog/images/Fld_Dsply_WA.jpg

Wheel Assembly for 2 and 3 sided Infield Video Display units

PRODUCT CATEGORY: DISPLAYS ~ LED

Full Product Description:

Mounting

Part Number: **BG3036D**



<http://www.finishlynx.com/archive/catalog/images/BG3036D.jpg>

Display Tripod w/manual rotating base

PRODUCT CATEGORY: DISPLAYS ~ MOUNTING

Call for more information.

Part Number: **TS02**



<http://www.finishlynx.com/archive/catalog/images/TS02.jpg>

Display Tripod Stand

PRODUCT CATEGORY: DISPLAYS ~ MOUNTING

Full Product Description:

Can be used stationary or rotating.

* **Image Disclaimer:** The images presented are informational only and are not intended as a specification. Products may vary from those illustrated and Colors may not be accurate

Part Number: **DisplayMount**



<http://www.finishlynx.com/archive/catalog/images/DisplayMount.jpg>

Angled Field Display Mount, 60" Wide

PRODUCT CATEGORY: DISPLAYS ~ MOUNTING

Full Product Description:

Ideal for field mounting of larger LED and reflective displays

Part Number: **DisplayMount-36**

We are sorry
but there
is currently
no image
available for
this product

<http://www.finishlynx.com/archive/catalog/images/DisplayMount-36.jpg>

Angled Field Display Mount, 36" Wide

PRODUCT CATEGORY: DISPLAYS ~ MOUNTING

Full Product Description:

Ideal for field mounting of Smaller LED and reflective displays

Part Number: **DisplayBase**

We are sorry
but there
is currently
no image
available for
this product

<http://www.finishlynx.com/archive/catalog/images/DisplayBase.jpg>

Universal Display Foot Set for Angled Mounting

PRODUCT CATEGORY: DISPLAYS ~ MOUNTING

Call for more information.

Part Number: **GAL-RTBase**



<http://www.finishlynx.com/archive/catalog/images/GAL-RTBase.jpg>

Manually Rotating Base for LED Graphic Scoreboards

PRODUCT CATEGORY: DISPLAYS ~ MOUNTING

Full Product Description:

For mounting single or dual sided displays. Allows continuous 360 degree rotation.

Part Number: **GAL-MRTBase**



<http://www.finishlynx.com/archive/catalog/images/GAL-MRTBase.jpg>

Motorized Rotating Base for LED Graphic Scoreboards

PRODUCT CATEGORY: DISPLAYS ~ MOUNTING

Full Product Description:

For mounting single or dual sided displays. Allows continuous 360 degree rotation. Includes controller for varied rotation speed and CW/CCW rotation.

Protective Cases

Part Number: **1A207**



<http://www.finishlynx.com/archive/catalog/images/1A207.jpg>

Custom Camera Carrying Case

PRODUCT CATEGORY: PROTECTIVE CASES

Full Product Description:

Carrying case for EtherLynx cameras with custom foam insert.

Part Number: **CP102**



<http://www.finishlynx.com/archive/catalog/images/CP102.jpg>

Heavy Duty Custom Camera Carrying Case - Small

PRODUCT CATEGORY: PROTECTIVE CASES

Full Product Description:

Protective case for remote positioner, IdentiLynx and other smaller devices.

Part Number: **1A204L**



<http://www.finishlynx.com/archive/catalog/images/1A204L.jpg>

Large Carrying Case with Wheels

PRODUCT CATEGORY: PROTECTIVE CASES

Full Product Description:

Large accessory carrying case with wheels

Computers & Computer Peripherals

Part Number: 4SX-25N



<http://www.finishlynx.com/archive/catalog/images/4SX-25N.jpg>

Notebook PC with software loaded and preconfigured

PRODUCT CATEGORY: COMPUTERS & COMPUTER PERIPHERALS

Full Product Description:

Notebook PC with FinishLynx or Meet Management software loaded and preconfigured.

Part Number: 4SX-25D



<http://www.finishlynx.com/archive/catalog/images/4SX-25D.jpg>

Desktop PC with software loaded and preconfigured

PRODUCT CATEGORY: COMPUTERS & COMPUTER PERIPHERALS

Full Product Description:

Desktop PC with FinishLynx or Meet Management software loaded and preconfigured.

Part Number: INKJET



<http://www.finishlynx.com/archive/catalog/images/INKJET.jpg>

Premium Quality Ink Jet Printer

PRODUCT CATEGORY: COMPUTERS & COMPUTER PERIPHERALS

Full Product Description:

Part Number: Laser_600



http://www.finishlynx.com/archive/catalog/images/Laser_600.jpg

Laser Printer 1200 DPI

PRODUCT CATEGORY: COMPUTERS & COMPUTER PERIPHERALS

Full Product Description:

Part Number: Laminator



<http://www.finishlynx.com/archive/catalog/images/Laminator.jpg>

Laminator Kit (Laminator + 50 Foam Board Pouches)

PRODUCT CATEGORY: COMPUTERS & COMPUTER PERIPHERALS

Full Product Description:

Part Number: **UPS-200**
<http://www.finishlynx.com/archive/catalog/images/UPS-200.jpg>
Uninterruptible Power Supply*PRODUCT CATEGORY:* COMPUTERS & COMPUTER PERIPHERALSFull Product Description:

Line-Interactive 200VA Battery Back-Up system. Includes surge and brown-out protection

Part Number: **OMNI-675**
<http://www.finishlynx.com/archive/catalog/images/OMNI-675.jpg>
Uninterruptible Power Supply*PRODUCT CATEGORY:* COMPUTERS & COMPUTER PERIPHERALSFull Product Description:

Line-Interactive 675VA Battery Back-Up system. Includes surge and brown-out protection

Part Number: **USB-Serial1_**
http://www.finishlynx.com/archive/catalog/images/USB-Serial1_.jpg
USB to Serial Converter 1 Port*PRODUCT CATEGORY:* COMPUTERS & COMPUTER PERIPHERALSFull Product Description:

Converts a computer's USB port to one DB9 male serial port.

Part Number: **USB-Serial2**
<http://www.finishlynx.com/archive/catalog/images/USB-Serial2.jpg>
USB to Serial Converter-2 Port*PRODUCT CATEGORY:* COMPUTERS & COMPUTER PERIPHERALSFull Product Description:

Converts a computer's USB port to two DB9 male serial ports.

Part Number: **MicroUSB-USB**

We are sorry
but there
is currently
no image
available for
this product

<http://www.finishlynx.com/archive/catalog/images/MicroUSB-USB.jpg>
MicroUSB to Std USB Adapter*PRODUCT CATEGORY:* COMPUTERS & COMPUTER PERIPHERALS

[Call for more information.](#)

Part Number: **PC-80211b**



<http://www.finishlynx.com/archive/catalog/images/PC-80211b.jpg>

PCMCIA Wireless Ethernet Card

PRODUCT CATEGORY: COMPUTERS & COMPUTER PERIPHERALS

Full Product Description:

PCMCIA wireless Ethernet card for notebook computer.

Part Number: **RS232-EXT**



<http://www.finishlynx.com/archive/catalog/images/RS232-EXT.jpg>

RS232 Range extender

PRODUCT CATEGORY: COMPUTERS & COMPUTER PERIPHERALS

Full Product Description:

Extends RS232 up to 1000 feet over standard CAT5 cable

Networking Hardware

Part Number: 8L101



<http://www.finishlynx.com/archive/catalog/images/8L101.jpg>

AirLynx Gateway

PRODUCT CATEGORY: NETWORKING HARDWARE

Full Product Description:

Allows wireless WiFi devices to connect to a wired network and NetExchange.

Part Number: 8L105



<http://www.finishlynx.com/archive/catalog/images/8L105.jpg>

AirLynx Amplified Antenna Kit

PRODUCT CATEGORY: NETWORKING HARDWARE

Full Product Description:

Amplified 14 dbi 120 degree sector antenna kit to extend the range of the AirLynx Gateway.

Part Number: 8L110



<http://www.finishlynx.com/archive/catalog/images/8L110.jpg>

SerialLynx (Wired/Wireless)

PRODUCT CATEGORY: NETWORKING HARDWARE

Full Product Description:

Allows wired or wireless communication to two serial devices on a LAN using TCP-IP mapping.

Part Number: 8L110-B



<http://www.finishlynx.com/archive/catalog/images/8L110-B.jpg>

SerialLynx (Wired/Wireless) With External Battery Pack

PRODUCT CATEGORY: NETWORKING HARDWARE

Full Product Description:

Allows wired or wireless communication to two serial devices on a LAN using TCP-IP mapping. Includes SLA Battery pack for operation without AC power.

Part Number: 8L107



<http://www.finishlynx.com/archive/catalog/images/8L107.jpg>

Directional Antenna

PRODUCT CATEGORY: NETWORKING HARDWARE

Full Product Description:

External 15.5 dbi flat planar array antenna.

Lynx Catalog

Part Number: **HUB-8**



<http://www.finishlynx.com/archive/catalog/images/HUB-8.jpg>

10/100 Base-T 8 Port Switch

PRODUCT CATEGORY: NETWORKING HARDWARE

Full Product Description:

Allows the connection of up to eight wired Ethernet devices via 10BT Cable.

Part Number: **PoE-Switch**



Actual Model May Vary

<http://www.finishlynx.com/archive/catalog/images/PoE-Switch.jpg>

8-Port 10/100 Power over Ethernet Switch

PRODUCT CATEGORY: NETWORKING HARDWARE

Call for more information.

Part Number: **LNC4318**



<http://www.finishlynx.com/archive/catalog/images/LNC4318.jpg>

TP Fiber Translator

PRODUCT CATEGORY: NETWORKING HARDWARE

Full Product Description:

Converts multimode fiber optic cable with ST connectors to 10BT Cable.

Part Number: **LNC-4320**



<http://www.finishlynx.com/archive/catalog/images/LNC-4320.jpg>

10BT Transceiver

PRODUCT CATEGORY: NETWORKING HARDWARE

Full Product Description:

Converts 10BT cable to an AUI Connection.

Part Number: **LNC4322**



<http://www.finishlynx.com/archive/catalog/images/LNC4322.jpg>

Fiber Transceiver

PRODUCT CATEGORY: NETWORKING HARDWARE

Full Product Description:

Converts multimode fiber optic cable with ST connectors to an AUI Connection.

Clothing

Part Number: **LC104**



<http://www.finishlynx.com/archive/catalog/images/LC104.jpg>

FinishLynx Cap

PRODUCT CATEGORY: CLOTHING

Call for more information.

Part Number: **LC105**



<http://www.finishlynx.com/archive/catalog/images/LC105.jpg>

FinishLynx Polar Fleece Vest

PRODUCT CATEGORY: CLOTHING

Call for more information.

Part Number: **LC106W**



<http://www.finishlynx.com/archive/catalog/images/LC106W.jpg>

FinishLynx Polo Shirt White

PRODUCT CATEGORY: CLOTHING

Call for more information.

Part Number: **LC106B**



<http://www.finishlynx.com/archive/catalog/images/LC106B.jpg>

FinishLynx Polo Shirt Black

PRODUCT CATEGORY: CLOTHING

Call for more information.

Part Number: **LC107**



<http://www.finishlynx.com/archive/catalog/images/LC107.jpg>

FinishLynx Denim Shirt

PRODUCT CATEGORY: CLOTHING

Call for more information.

Lynx Catalog

Part Number: **LC108**



<http://www.finishlynx.com/archive/catalog/images/LC108.jpg>

FinishLynx Turtleneck

PRODUCT CATEGORY: CLOTHING

Call for more information.

Part Number: **LC109**



<http://www.finishlynx.com/archive/catalog/images/LC109.jpg>

FinishLynx Nexus Stuffed Animal

PRODUCT CATEGORY: CLOTHING

Call for more information.

Part Number: **LynxT**



<http://www.finishlynx.com/archive/catalog/images/LynxT.jpg>

Promo FinishLynx T-shirt

PRODUCT CATEGORY: CLOTHING

Call for more information.

Part Number: **LC110**



<http://www.finishlynx.com/archive/catalog/images/LC110.jpg>

FinishLynx Fleece Pullover

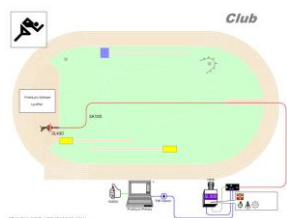
PRODUCT CATEGORY: CLOTHING

Call for more information.

Complete Packaged Solutions

Athletic

Part Number: **Club-Vision**



<http://www.finishlynx.com/archive/catalog/images/Club-Vision.jpg>

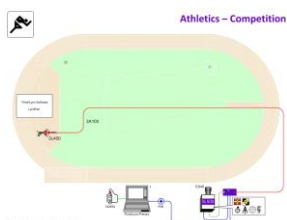
Packaged Solution - Vision Club

PRODUCT CATEGORY: COMPLETE PACKAGED SOLUTIONS ~
ATHLETIC

Call for more information.

<http://www.finishlynx.com/packages/athletics-timing-systems/>

Part Number: **Competition-Vision**



<http://www.finishlynx.com/archive/catalog/images/Competition-Vision.jpg>

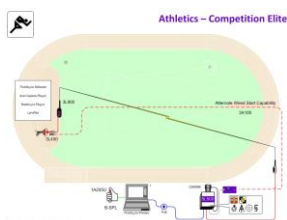
Packaged Solution - Vision Competition

PRODUCT CATEGORY: COMPLETE PACKAGED SOLUTIONS ~
ATHLETIC

Call for more information.

<http://www.finishlynx.com/packages/athletics-timing-systems/>

Part Number: **Competition_Elite-Vision**



http://www.finishlynx.com/archive/catalog/images/Competition_Elite-Vision.jpg

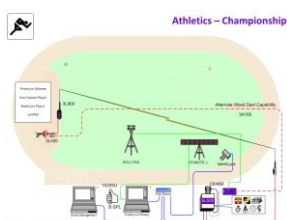
Packaged Solution - Vision Competition Elite

PRODUCT CATEGORY: COMPLETE PACKAGED SOLUTIONS ~
ATHLETIC

Call for more information.

<http://www.finishlynx.com/packages/athletics-timing-systems/>

Part Number: **Championship-Vision**



<http://www.finishlynx.com/archive/catalog/images/Championship-Vision.jpg>

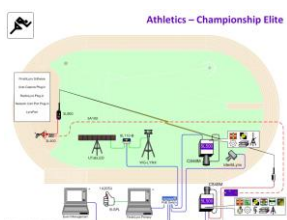
Packaged Solution - Vision Championship

PRODUCT CATEGORY: COMPLETE PACKAGED SOLUTIONS ~
ATHLETIC

Call for more information.

<http://www.finishlynx.com/packages/athletics-timing-systems/>

Part Number: **Championship_Elite-Vision**



http://www.finishlynx.com/archive/catalog/images/Championship_Elite-Vision.jpg

Packaged Solution - Vision Championship Elite

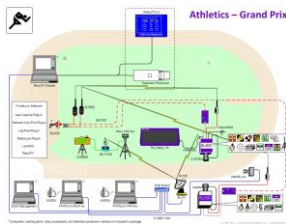
PRODUCT CATEGORY: COMPLETE PACKAGED SOLUTIONS ~
ATHLETIC

Call for more information.

<http://www.finishlynx.com/packages/athletics-timing-systems/>

Lynx Catalog

Part Number: **Grand_Prix-Vision**



http://www.finishlynx.com/archive/catalog/images/Grand_Prix-Vision.jpg

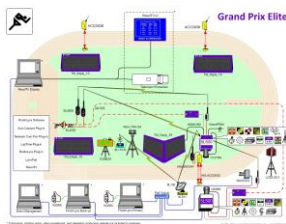
Packaged Solution - Vision Grand Prix

PRODUCT CATEGORY: COMPLETE PACKAGED SOLUTIONS ~ ATHLETIC

Call for more information.

<http://www.finishlynx.com/packages/athletics-timing-systems/>

Part Number: **Grand_Prix_Elite-Vision**



http://www.finishlynx.com/archive/catalog/images/Grand_Prix_Elite-Vision.jpg

Packaged Solution - Vision Grand Prix Elite

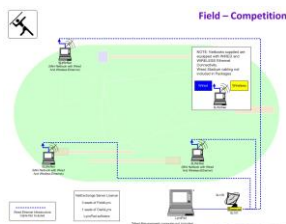
PRODUCT CATEGORY: COMPLETE PACKAGED SOLUTIONS ~ ATHLETIC

Call for more information.

<http://www.finishlynx.com/packages/athletics-timing-systems/>

Field Events

Part Number: **Field-Competition**



<http://www.finishlynx.com/archive/catalog/images/Field-Competition.jpg>

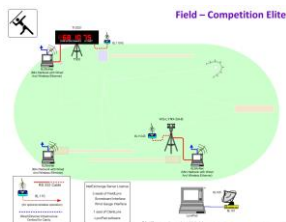
Packaged Solution - Field-Competition

PRODUCT CATEGORY: COMPLETE PACKAGED SOLUTIONS ~ FIELD EVENTS

Call for more information.

http://www.finishlynx.com/archive/catalog/images/Field-Competition_info.pdf

Part Number: **Field-Competition_Elite**



http://www.finishlynx.com/archive/catalog/images/Field-Competition_Elite.jpg

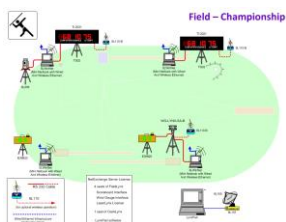
Packaged Solution - Field-Competition Elite

PRODUCT CATEGORY: COMPLETE PACKAGED SOLUTIONS ~ FIELD EVENTS

Call for more information.

http://www.finishlynx.com/archive/catalog/images/Field-Competition_Elite_info.pdf

Part Number: **Field-Championship**



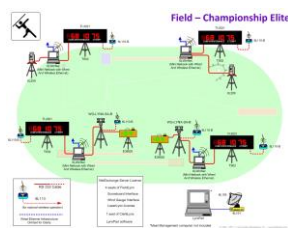
<http://www.finishlynx.com/archive/catalog/images/Field-Championship.jpg>

Packaged Solution - Field-Championship

PRODUCT CATEGORY: COMPLETE PACKAGED SOLUTIONS ~ FIELD EVENTS

Call for more information.

http://www.finishlynx.com/archive/catalog/images/Field-Championship_info.pdf

Part Number: **Field-Championship_Elite**

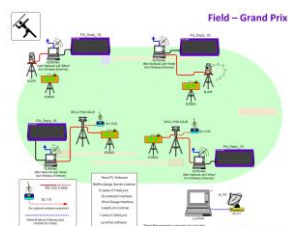
http://www.finishlynx.com/archive/catalog/images/Field-Championship_Elite.jpg

Packaged Solution - Field-Championship Elite

PRODUCT CATEGORY: COMPLETE PACKAGED SOLUTIONS ~ FIELD EVENTS

Call for more information.

http://www.finishlynx.com/archive/catalog/images/Field-Championship_Elite_info.pdf

Part Number: **Field-Grand_Prix**

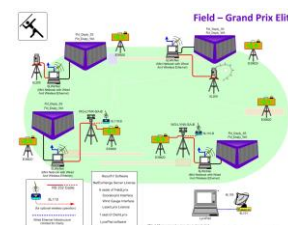
http://www.finishlynx.com/archive/catalog/images/Field-Grand_Prix.jpg

Packaged Solution - Field-Grand Prix

PRODUCT CATEGORY: COMPLETE PACKAGED SOLUTIONS ~ FIELD EVENTS

Call for more information.

http://www.finishlynx.com/archive/catalog/images/Field-Grand_Prix_info.pdf

Part Number: **Field-Grand_Prix_Elite**

http://www.finishlynx.com/archive/catalog/images/Field-Grand_Prix_Elite.jpg

Packaged Solution - Field-Grand Prix Elite

PRODUCT CATEGORY: COMPLETE PACKAGED SOLUTIONS ~ FIELD EVENTS

Call for more information.

http://www.finishlynx.com/archive/catalog/images/Field-Grand_Prix_Elite_info.pdf

IdentiLynxPart Number: **IdentiLynx**

<http://www.finishlynx.com/archive/catalog/images/IdentiLynx.jpg>

Complete 1280x720, 30fps, 2D camera package

PRODUCT CATEGORY: COMPLETE PACKAGED SOLUTIONS ~ IDENTILYNX

Full Product Description:

Includes camera, lens, tripod, PoE adapter, cables, carrying case and software

Part Number: **IdentiLynx-XR_Plus**

http://www.finishlynx.com/archive/catalog/images/IdentiLynx-XR_Plus.jpg

Complete Extended Resolution 2592x1944 2D camera package

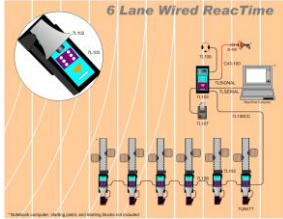
PRODUCT CATEGORY: COMPLETE PACKAGED SOLUTIONS ~ IDENTILYNX

Full Product Description:

Includes IDL-B95, lens, tripod, PoE adapter, cables, carrying case and software

ReactTime

Part Number: **RT6L**



<http://www.finishlynx.com/archive/catalog/images/RT6L.jpg>

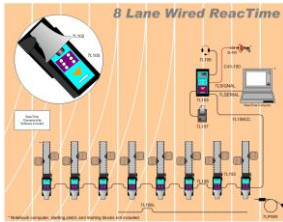
Complete 6 lane ReactTime False Start System - Wired

PRODUCT CATEGORY: COMPLETE PACKAGED SOLUTIONS ~ REACTIME

Call for more information.

http://www.finishlynx.com/archive/catalog/images/RT6L_info.pdf

Part Number: **RT8L**



<http://www.finishlynx.com/archive/catalog/images/RT8L.jpg>

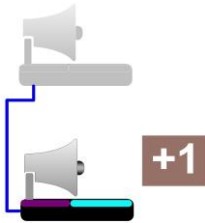
Complete 8 lane ReactTime False Start System - Wired

PRODUCT CATEGORY: COMPLETE PACKAGED SOLUTIONS ~ REACTIME

Call for more information.

http://www.finishlynx.com/archive/catalog/images/RT8L_info.pdf

Part Number: **RT+1**



<http://www.finishlynx.com/archive/catalog/images/RT+1.jpg>

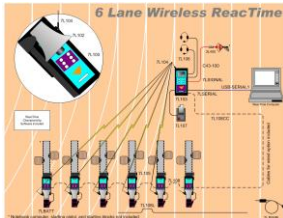
Additional ReactTime wired lane

PRODUCT CATEGORY: COMPLETE PACKAGED SOLUTIONS ~ REACTIME

Full Product Description:

Adds a single wired lane to RT6L, system max =10. Also useful as a spare lane.

Part Number: **RT6LWL**



<http://www.finishlynx.com/archive/catalog/images/RT6LWL.jpg>

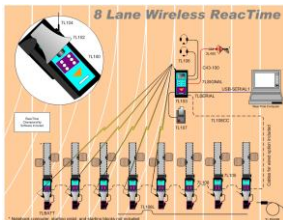
Complete 6 lane ReactTime False Start System - Wireless

PRODUCT CATEGORY: COMPLETE PACKAGED SOLUTIONS ~ REACTIME

Call for more information.

http://www.finishlynx.com/archive/catalog/images/RT6LWL_info.pdf

Part Number: **RT8LWL**



<http://www.finishlynx.com/archive/catalog/images/RT8LWL.jpg>

Complete 8 lane ReactTime False Start System - Wireless

PRODUCT CATEGORY: COMPLETE PACKAGED SOLUTIONS ~ REACTIME

Call for more information.

http://www.finishlynx.com/archive/catalog/images/RT8LWL_info.pdf

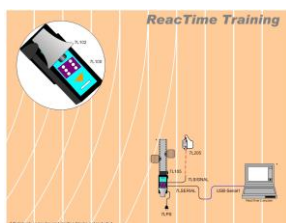
Part Number: **RT+1WL**
http://www.finishlynx.com/archive/catalog/images/RT_1WL.jpg
Additional ReactTime wireless lane

PRODUCT CATEGORY: COMPLETE PACKAGED SOLUTIONS ~
REACTIME

Full Product Description:

Adds a single wireless lane to RT6LWL, system max =10.
Also useful as a spare lane.

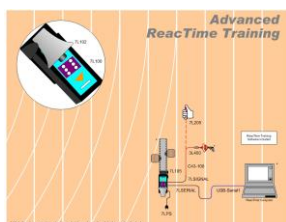
http://www.finishlynx.com/archive/catalog/images/RT_1WL_info.pdf

ReactTime TrainingPart Number: **RT-T**
<http://www.finishlynx.com/archive/catalog/images/RT-T.jpg>
Complete ReactTime Training System - Starter System

PRODUCT CATEGORY: COMPLETE PACKAGED SOLUTIONS ~
REACTIME TRAINING

Call for more information.

http://www.finishlynx.com/archive/catalog/images/RT-T_info.pdf

Part Number: **RT-TA**
<http://www.finishlynx.com/archive/catalog/images/RT-TA.jpg>
Complete ReactTime Training System - Advanced

PRODUCT CATEGORY: COMPLETE PACKAGED SOLUTIONS ~
REACTIME TRAINING

Full Product Description:

Includes RT-T system plus start sensor and PC interface software.

http://www.finishlynx.com/archive/catalog/images/RT-TA_info.pdf

Part Number: **RT-TAP**
<http://www.finishlynx.com/archive/catalog/images/RT-TAP.jpg>
Complete ReactTime Training System - Advanced Wired

PRODUCT CATEGORY: COMPLETE PACKAGED SOLUTIONS ~
REACTIME TRAINING

Full Product Description:

Includes RT-TA system and wired photocell

http://www.finishlynx.com/archive/catalog/images/RT-TAP_info.pdf

Part Number: **RT-TAWP**
<http://www.finishlynx.com/archive/catalog/images/RT-TAWP.jpg>
Complete ReactTime Training System - Advanced Wireless

PRODUCT CATEGORY: COMPLETE PACKAGED SOLUTIONS ~
REACTIME TRAINING

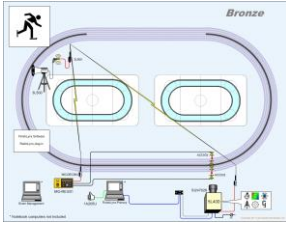
Full Product Description:

Includes RT-TA system and wireless photocell

http://www.finishlynx.com/archive/catalog/images/RT-TAWP_info.pdf

Speed Skating

Part Number: **LT-Bronze**



<http://www.finishlynx.com/archive/catalog/images/LT-Bronze.jpg>

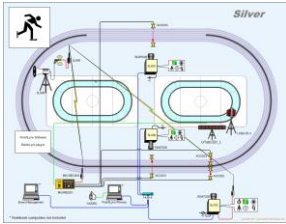
Packaged Solution - Long Track Bronze

PRODUCT CATEGORY: COMPLETE PACKAGED SOLUTIONS ~ SPEED SKATING

Call for more information.

<http://www.finishlynx.com/packages/speed-skating-timing-systems/>

Part Number: **LT-Silver**



<http://www.finishlynx.com/archive/catalog/images/LT-Silver.jpg>

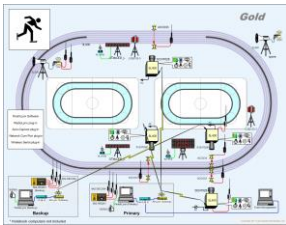
Packaged Solution - Long Track Silver

PRODUCT CATEGORY: COMPLETE PACKAGED SOLUTIONS ~ SPEED SKATING

Call for more information.

<http://www.finishlynx.com/packages/speed-skating-timing-systems/>

Part Number: **LT-Gold**



<http://www.finishlynx.com/archive/catalog/images/LT-Gold.jpg>

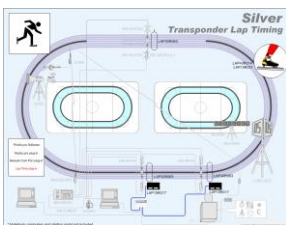
Packaged Solution - Long Track Gold

PRODUCT CATEGORY: COMPLETE PACKAGED SOLUTIONS ~ SPEED SKATING

Call for more information.

<http://www.finishlynx.com/packages/speed-skating-timing-systems/>

Part Number: **LT-LAP_T**



http://www.finishlynx.com/archive/catalog/images/LT-LAP_T.jpg

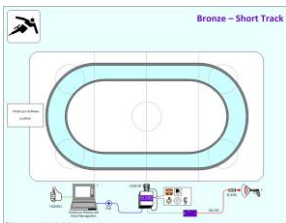
Packaged Solution - Long Track Transponder Lap Timing Add On

PRODUCT CATEGORY: COMPLETE PACKAGED SOLUTIONS ~ SPEED SKATING

Call for more information.

<http://www.finishlynx.com/packages/speed-skating-timing-systems/>

Part Number: **ST-Bronze**



<http://www.finishlynx.com/archive/catalog/images/ST-Bronze.jpg>

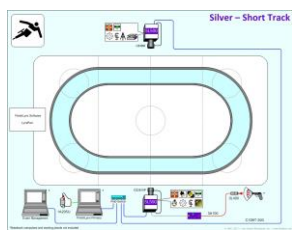
Packaged Solution - Short Track Bronze

PRODUCT CATEGORY: COMPLETE PACKAGED SOLUTIONS ~ SPEED SKATING

Call for more information.

<http://www.finishlynx.com/packages/speed-skating-timing-systems/>

Part Number: **ST-Silver**



<http://www.finishlynx.com/archive/catalog/images/ST-Silver.jpg>

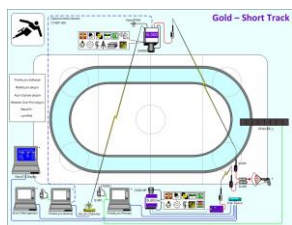
Packaged Solution - Short Track Silver

PRODUCT CATEGORY: COMPLETE PACKAGED SOLUTIONS ~ SPEED SKATING

Call for more information.

<http://www.finishlynx.com/packages/speed-skating-timing-systems/>

Part Number: **ST-Gold**



<http://www.finishlynx.com/archive/catalog/images/ST-Gold.jpg>

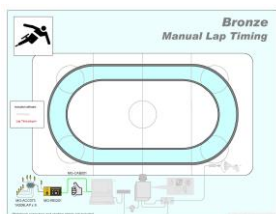
Packaged Solution - Short Track Gold

PRODUCT CATEGORY: COMPLETE PACKAGED SOLUTIONS ~ SPEED SKATING

Call for more information.

<http://www.finishlynx.com/packages/speed-skating-timing-systems/>

Part Number: **ST-LAP_M**



http://www.finishlynx.com/archive/catalog/images/ST-LAP_M.jpg

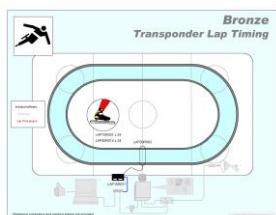
Packaged Solution - Short Track Manual Lap Timing Add On

PRODUCT CATEGORY: COMPLETE PACKAGED SOLUTIONS ~ SPEED SKATING

Call for more information.

<http://www.finishlynx.com/packages/speed-skating-timing-systems/>

Part Number: **ST-LAP_T**



http://www.finishlynx.com/archive/catalog/images/ST-LAP_T.jpg

Packaged Solution - Short Track Transponder Lap Timing AddOn

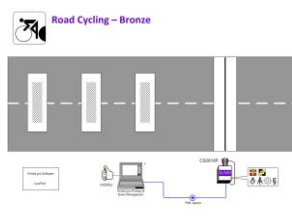
PRODUCT CATEGORY: COMPLETE PACKAGED SOLUTIONS ~ SPEED SKATING

Call for more information.

<http://www.finishlynx.com/packages/speed-skating-timing-systems/>

Cycling

Part Number: **Road_Cycling_- Bronze**



http://www.finishlynx.com/archive/catalog/images/Road_Cycling_- Bronze.jpg

Bronze Level Road Cycling Package

PRODUCT CATEGORY: COMPLETE PACKAGED SOLUTIONS ~ CYCLING

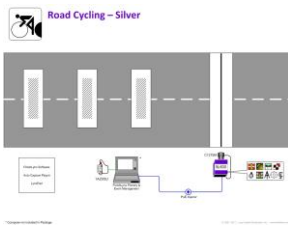
Full Product Description:

Complete system addressing the needs of Road Cycling applications.

<http://www.finishlynx.com/packages/cycling-timing-systems/>

Lynx Catalog

Part Number: **Road_Cycling_-_Silver**



http://www.finishlynx.com/archive/catalog/images/Road_Cycling_-_Silver.jpg

Silver Level Road Cycling Package

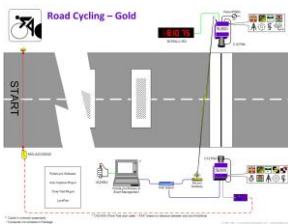
PRODUCT CATEGORY: COMPLETE PACKAGED SOLUTIONS ~ CYCLING

Full Product Description:

Complete system addressing the needs of Road Cycling applications.

<http://www.finishlynx.com/packages/cycling-timing-systems/>

Part Number: **Road_Cycling_-_Gold**



http://www.finishlynx.com/archive/catalog/images/Road_Cycling_-_Gold.jpg

Gold Level Road Cycling Package

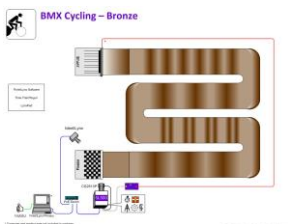
PRODUCT CATEGORY: COMPLETE PACKAGED SOLUTIONS ~ CYCLING

Full Product Description:

Complete system addressing the needs of Road Cycling applications.

<http://www.finishlynx.com/packages/cycling-timing-systems/>

Part Number: **BMX_-_Bronze**



http://www.finishlynx.com/archive/catalog/images/BMX_-_Bronze.jpg

Bronze Level BMX Cycling Package

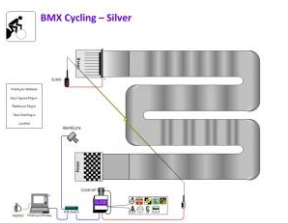
PRODUCT CATEGORY: COMPLETE PACKAGED SOLUTIONS ~ CYCLING

Full Product Description:

Complete system addressing the needs of BMX Cycling applications.

<http://www.finishlynx.com/packages/cycling-timing-systems/>

Part Number: **BMX_-_Silver**



http://www.finishlynx.com/archive/catalog/images/BMX_-_Silver.jpg

Silver Level BMX Cycling Package

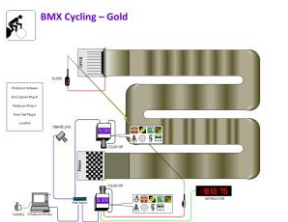
PRODUCT CATEGORY: COMPLETE PACKAGED SOLUTIONS ~ CYCLING

Full Product Description:

Complete system addressing the needs of BMX Cycling applications.

<http://www.finishlynx.com/packages/cycling-timing-systems/>

Part Number: **BMX_-_Gold**



http://www.finishlynx.com/archive/catalog/images/BMX_-_Gold.jpg

Gold Level BMX Cycling Package

PRODUCT CATEGORY: COMPLETE PACKAGED SOLUTIONS ~ CYCLING

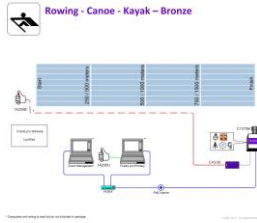
Full Product Description:

Complete system addressing the needs of BMX Cycling applications.

<http://www.finishlynx.com/packages/cycling-timing-systems/>

Rowing

Part Number: Rowing_-_Bronze



http://www.finishlynx.com/archive/catalog/images/Rowing_-_Bronze.jpg

Bronze Level Rowing Package

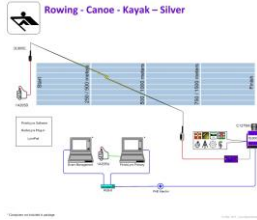
PRODUCT CATEGORY: COMPLETE PACKAGED SOLUTIONS ~ ROWING

Full Product Description:

Complete system addressing the needs of Rowing, Canoe, Kayak and Dragon Boat applications.

<http://www.finishlynx.com/packages/rowing-and-padding-timing-systems/>

Part Number: Rowing_-_Silver



http://www.finishlynx.com/archive/catalog/images/Rowing_-_Silver.jpg

Silver Level Rowing Package

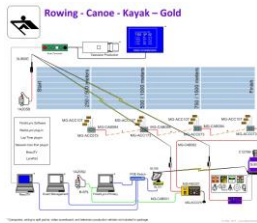
PRODUCT CATEGORY: COMPLETE PACKAGED SOLUTIONS ~ ROWING

Full Product Description:

Complete system addressing the needs of Rowing, Canoe, Kayak and Dragon Boat applications.

<http://www.finishlynx.com/packages/rowing-and-padding-timing-systems/>

Part Number: Rowing_-_Gold



http://www.finishlynx.com/archive/catalog/images/Rowing_-_Gold.jpg

Gold Level Rowing Package

PRODUCT CATEGORY: COMPLETE PACKAGED SOLUTIONS ~ ROWING

Full Product Description:

Complete system addressing the needs of Rowing, Canoe, Kayak and Dragon Boat applications.

<http://www.finishlynx.com/packages/rowing-and-padding-timing-systems/>

* **Image Disclaimer:** The images presented are informational only and are not intended as a specification. Products may vary from those illustrated and Colors may not be accurate

Index

12076XLC-RD	74	6LSW_CL	59	C10BT-100.....	45
12079XLC-RD	75	6LSW_FL	59	C10BT-200.....	45
148	49	6LSW1	59	C10BT-25.....	45
149	49	6LSW2	59	C10BT-300.....	45
155	24	6LSW3	59	C1275M	24
1A204L	79	6LSW7U.....	59	C43-10	46, 47
1A205B.....	15	6LWinNet	60	C43-100	47
1A205L-U	15	730155	57	C43-200	47
1A205U	15	7L100	52, 53, 54, 57	C43-25	46
1A207	79	7L100-B.....	57	C43-300	47
1A209LAP	65	7L100TC	51	C43-50	46
293	48	7L102	52	C-Box2.....	15
2L102	30	7L103	52, 53	Championship	55, 87, 88, 89
2L200P	31	7L104	53	Championship_Elite	87, 89
3A100	46	7L105	53	Competition.....	87, 88
3A200	46	7L106	53	Competition_Elite.....	87, 88
3A201	48	7L107	53, 54	CP102.....	79
3L300	36	7L108	54	DisplayBase	78
3L300R	34, 35	7L108CC	54	DisplayMount	78
3L400	37	7L108L	54	DisplayMount-36	78
3L400MB	37	7L109	51	DO-1213	24
3L500	34	7L205	52	DO-2514	25
3L500SK	34	7LBATT	42, 54	E39820	44
3L900	34	7LCART	55	E730UR	43
3L900BS.....	56	7LDOC	56	EH5723	32
3L900CC	56	7LFSC	55	EH5729	33
3L900E	35	7LPWR.....	55	Euro_Power.....	49
3L-Mount	37	7LSC	55	Field-Championship	88, 89
451	48	7L-SERIAL	56	Field-Championship_Elite	89
452	49	7L-SIGNAL.....	56	Field-Competition	88
4SX-25D	80	7L-SPLITTER.....	56	Field-Competition_Elite	88
4SX-25N	80	7LSWFS.....	55	Field-Grand_Prix.....	89
5079XLC-RD	75	7LSWTR.....	51	Field-Grand_Prix_Elite.....	89
5L10K	11	7LTP	40	GAL-MRTBase.....	78
5L2000+RG	14, 15	8L101	7, 10, 83	GAL-RTBase.....	78
5L300DCC.....	12	8L105	83	Grand_Prix.....	88, 89
5L300PS.....	12	8L107	83	Grand_Prix_Elite.....	88, 89
5L300RG	12	8L110	83	HS-9.....	34
5L400	13	8L110-B.....	83	HUB-8	84
5L5K	11	8L-Clip	35	IdentiLynx.....	3, 4, 16, 17, 79, 89
5L5K10K.....	11	8L-PS	36	IDL-511	16
5LACM	19	9LSW01	20	IDL-CS5-50f1.3	17
5LCO	14	ACC033K	39	IDL-Housing	17
5LFLEX	13	ACC093K	39	IDL-PoE	16
5LFO	11	AD16x128Mono	75	INKJET	80
5LHR	14	AD16x64Mono	44	Laminator.....	80
5LLAP.....	19	AD32x128Mono	76	LAP10R031.....	65
5LPES	19	AD64x128Mono	76	LAP15R017.....	65
5LPLC	11	AF09N700	26	LAP30R063.....	65
5LPNCP	19	B200	31	LAP40R014.....	66
5LPRC.....	20	BG2907	32	Laser_600.....	80
5LPRL	18	BG2909.....	30	LC104	85
5LPTT.....	19	BG-3007K2	40	LC105	85
5LRG	15	BG3036	30	LC106B	85
5LSPLIT	20	BG3036D	77	LC106W	85
5LSW	18	BG3232	31	LC107	85
5LSW1.....	66	BG3263	30	LC108	86
5LTE	14	BG3271_	32	LC109	86
5LWiFi	10	BG3275.....	30	LC110	86
5LWiFi2	10	BG3419.....	32	LCB2-25-1.....	76
5LZOOM.....	10	BG394.....	31	LCB2-25-3.....	76
6076XLC-RD	74	BMX_- _Bronze.....	94	LCB3-25-3.....	76
6079XLC-RD	75	BMX_- _Gold	94	LNC4318	84
6L209	61	BMX_- _Silver	94	LNC-4320.....	84
6LPRT	60	B-SPL.....	47	LNC4322.....	84

LT-Bronze.....	92	MG-SEM001	37	RT-TAWP.....	91
LT-Gold	92	MG-SYN001.....	70	S50660	62
LT-LAP_T	92	MG-SYN001_K	70	S62005	62
LT-Silver	92	MG-TAL001.....	71	ScanConv	58
LynxT.....	86	MG-TAL002.....	72	ScanConv_D.....	58
MC-C	21	MG-TAL003.....	72	SI3014	26
MC-F	21	MG-TAL004.....	72	SS112-25A.....	53, 54
MC-R	21	MM-C	23	SS5723	32
MC-RV.....	21	MM-F.....	23	SS5729	33
MC-V	21	MM-R	23	ST-Bronze.....	92
MG-ACC032_.....	37	MM-RV	23	ST-Gold.....	93
MG-ACC033	39	MM-V.....	23	ST-LAP_M	93
MG-ACC034	39	MPU1	61	ST-LAP_T	93
MG-ACC054	41	NK1400	28	ST-Silver	93
MG-ACC073	63	NK1429	26	SW-2101	75
MG-ACC075	63	NK1902	27	TI-2021	75
MG-ACC083	41	NK1923	27	TL-IP01-00	67
MG-ACC089	52	NK1929	26	TL-IP01-01	67
MG-ACC093	39, 40	NK1931	27	TL-IP01-03	66, 67
MG-ACC093D	40	NK1932	28	TL-IP11-01	68
MG-ACC093S.....	39	NK1934	28	TL-IP11-02	68
MG-ACC094	40	NK1940	28	TL-IP11-03	67
MG-ACC107	64	NK1943	28	TL-IP11-04	68
MG-ACC120	70	NK1986	27	TL-IP30-00	66
MG-ACC123	41	NK2137	27	TL-IP30-01	66
MG-ACC147	73	NULL	48	TL-IP30-02	66
MG-ACC161	73	OMNI-675.....	81	TL-IP30-03	66
MG-ACC163	73	PC21	62	TL-IS02-01	68
MG-ACC164	73	PC-80211b	82	TL-IS02-04	68
MG-ACC165	73	PE-Input	41	TL-IS03-00	69
MG-ACC167	74	PoE-Switch.....	84	TL-IS03-01	69
MG-ACC173	64	PS-77	34	TL-IS03-Vol.....	69
MG-BAG005	63	RAM1GB	11, 12	TL-IS20-00	69
MG-BAG014	38	RAM1GB-CPU	11, 12	TR10	50
MG-BAG035	74	ResulTV-BR	58	TS02	74, 75, 77
MG-BAG036	74	ResulTV-BR_Upgrade.....	58	TS50F	61
MG-BAG038	74	ResulTV-U.....	58	UGraphLED	71
MG-CAB001	63	Road_Cycling_-_Bronze	93	UPS-200	81
MG-CAB010	72	Road_Cycling_-_Gold	94	USB-Serial1_	81
MG-CAB086	64	Road_Cycling_-_Silver.....	94	USB-Serial2	81
MG-CAB092	64	Rowing_-_Bronze.....	95	UTabLED	71
MG-CAB094	64	Rowing_-_Gold	95	UTabLED_3S.....	71
MG-CAB119	41	Rowing_-_Silver	95	UTabLED_L	71
MG-CAB121	65	RS232-EXT	82	V160ZM	25
MG-CAB156	72	RT+1	90, 91	V2513	25
MG-DEC004	35	RT+1WL.....	91	WG-Adapter	43
MG-DEC004_Serial.....	35	RT6L	90	WG-Lynx.....	42, 43, 60
MG-DEC005	52	RT6LWL	90, 91	XTWRNT_1Y	50
MG-ELA009.....	36	RT8L	90	XTWRNT_2Y	50
MG-ENC004	36	RT8LWL	90	XTWRNT_3Y	50
MG-ENC004_Input	36	RT-T	91	Y-SPL	46, 48
MG-ENC204	36	RT-TA.....	91		
MG-REI201.....	63	RT-TAP	91		

Important Notice

Use of Lynx Software Products are governed by the Sales and License Agreement signed by you or your agent (the "Buyer"), Section 7a of which is reprinted below:

7a.Ownership of Software. Lynx System Developers, Inc. (Lynx) owns and retains all title, copyright, trademark, and other proprietary rights in the software, firmware and documentation provided with the software and firmware (collectively, "Software"). Buyer acknowledges that the Software is the confidential property of Lynx and the Buyer will not disclose the Software to any other person without Lynx's consent.

FinishLynx, EtherLynx, CyberScoreboard, ReacTime, and the FinishLynx logo are registered trademarks of Lynx System Developers, Inc.

SerialLynx, FieldLynx, LaserLynx, InterLynx, ClerkLynx, Exchange, ResultTV, LynxTV, VCPD and AirLynx are trademarks of Lynx System Developers, Inc.

Windows is registered trademark of Microsoft Corp.

Photoshop and PostScript are registered trademarks of Adobe Systems Incorporated.

Palm™ OS, Palm™ Computing, Graffiti, HotSync, are registered trademarks of Palm, Inc. Palm, the Palm logo, the HotSync® logo are trademarks of Palm, Inc.

All other trademarks are properties of their respective companies.

The following statement applies to the Independent JPG Group's software which is included with FinishLynx 32.

The authors make NO WARRANTY or representation, either express or implied, with respect to this software, its quality, accuracy, merchantability, or fitness for a particular purpose.

This software is provided "AS IS", and you, its user, assume the entire risk as to its quality and accuracy.

This software is copyright (C) 1991-1996, Thomas G. Lane. All Rights Reserved except as specified below.

Permission is hereby granted to use, copy, modify, and distribute this software (or portions thereof) for any purpose, without fee, subject to these conditions: (1) If any part of the source code for this software is distributed, then this README file must be included, with this copyright and no-warranty notice unaltered; and any additions, deletions, or changes to the original files must be clearly indicated in accompanying documentation. (2) If only executable code is distributed, then the accompanying documentation must state that "this software is based in part on the work of the Independent JPG Group". (3) Permission for use of this software is granted only if the user accepts full responsibility for any undesirable consequences; the authors accept NO LIABILITY for damages of any kind.

These conditions apply to any software derived from or based on the IJG code, not just to the unmodified library. If you use our work, you ought to acknowledge us.

Permission is NOT granted for the use of any IJG author's name or company name in advertising or publicity relating to this software or products derived from it. This software may be referred to only as "the Independent JPG Group's software".

We specifically permit and encourage the use of this software as the basis of commercial products, provided that all warranty or liability claims are assumed by the product vendor.

Lynx Catalog
Copyright © 12/11/2019 by Lynx System Developers, Inc.
All rights reserved.

End of DocumentEnd of Document

End of DocumentEnd of Document